

SPECIFICATIONS

Material: IQ-SEELS: Silicone Rubber Polymer type ASTM D 1418

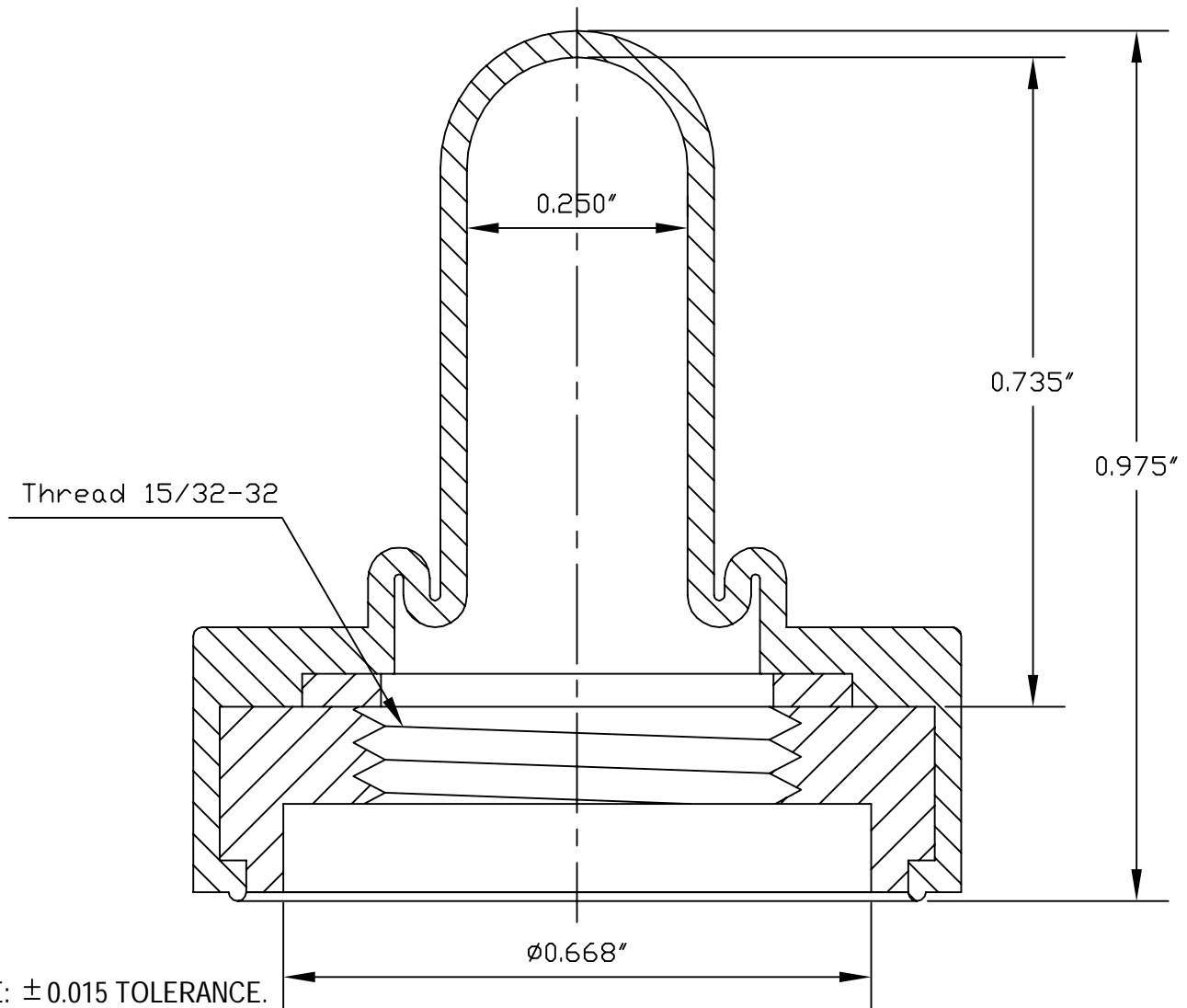
Mounting Nut: IQ-SEELS: Aluminum

Temperature Range: IQ-SEELS: -80°F to +400°F

Operational Life: 100,000 actuations (minimum)

Shelf Life: Excess of 25 years

Resistant to: Salt spray, sunlight, ozone, weather, fungus and most acids and lubricating oils



B	CHANGED ACTUATIONS FROM 50,000 to 100,000			04.17.09
A	CAD COMPUTER GENERATED			04.23.08
REV.	DESCRIPTION			DATE
MAXIMUM AND MINIMUM MEASURE- MENTS ARE STATED DIRECTLY ON EACH DIMENSION.	TITLE:	TOGGLE SWITCH BOOT		ENG. S. GOK 04.23.08
				DWN. S. GOK 04.23.08
				CHKD. J. CELLA 04.23.08
MAT'L: SILICONE RUBBER GR-30	APM-HEXSEAL CORPORATION	SCALE	DWG. NO.	IQ1030
FINISH: BLACK		5 : 1		IQ-SEEL

THIS DRAWING COVERS PROPRIETARY ITEM AND IS THE PROPERTY OF THE APM-HEXSEAL CORPORATION.
THIS DRAWING IS NOT TO BE COPIED OR USED WITHOUT THE WRITTEN APPROVAL OF AN OFFICER OF THE APM-HEXSEAL CORPORATION.

Mouser Electronics

Authorized Distributor

Click to View Pricing, Inventory, Delivery & Lifecycle Information:

[APM HEXSEAL:](#)

[IQ1030 2201](#) [IQ1030 2202](#) [IQ1030 53](#)