

## Dino-Lite ProX in metal housing

Dino-Lite digital microscopes are often used in industrial environments with high demands on durability and reliability. To offer increased protection and durability the Dino-Lite models are also offered with metal housing. The full aluminum body offers enhanced protection and the best look and feel. Most of the Dino-Lite digital microscopes are available with a metal housing.

### Applications of the Dino-Lite ProX

Used in virtually every market segment  
Industrial: e.g. quality assurance/ control, assembly, repair, soldering, welding

- > Law enforcement: counterfeit detection, forensics
- > Metallurgy
- > Biology and chemistry
- > Printing and textile
- > Education and science



#### AM4013MT



ADJUSTABLE  
~10-70x & 200x



1.3 MEGAPIXEL  
1280 x 1024

Advanced measurement functionality in the software

Most popular model for professional applications



#### AM4013MZT



ADJUSTABLE  
~10-70x & 200x



1.3 MEGAPIXEL  
1280 x 1024



POLARIZER  
ANTI-REFLECTION

Great solution when working with reflective objects (metal, plastics, electronics, jewelry, etc)



#### AM4013MTL



CONTINUOUS  
~10x-90x



1.3 MEGAPIXEL  
1280 x 1024



LONG WORKING  
DISTANCE  
4-15 cm

Ideal for work under the microscope (i.e. repair/precision assembly tasks)



#### AM4013MZT4



ADJUSTABLE  
~400x-470x



1.3 MEGAPIXEL  
1280 x 1024



POLARIZER  
ANTI-REFLECTION

Best choice when a high magnification is required



#### AM4013MZTL



CONTINUOUS  
~10x-90x



1.3 MEGAPIXEL  
1280 x 1024

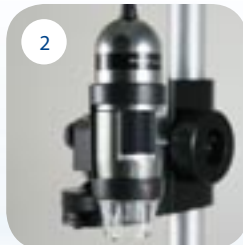


POLARIZER  
ANTI-REFLECTION

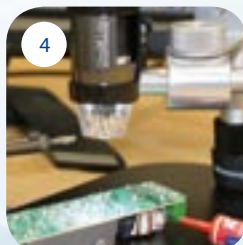
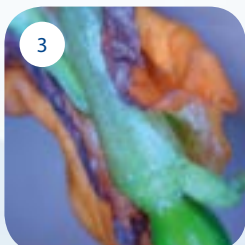


LONG WORKING  
DISTANCE  
4-15 cm

Great choice for working under the microscope on shiny/reflective objects



- 1 Inside a piece of metal
- 2 Metal Dino-Lite with stand
- 3 Part of flower
- 4 Soldering with a Dino-Lite



#### AD4013MT

with exchangeable caps

#### AD4013MTL

exchangeable caps & long working distance

#### AD4013MZT

exchangeable caps, polarizer

#### AD4013MZTL

Exchangeable caps, long working distance & polarizer

Selected models with UV light are also available in metal housing.

Dino-Lite ProX range is equipped with USB 2.0



USB 2.0

## Dino-Lite accessories

A sturdy and reliable stand solution is a must-have for your high precision Dino-Lite digital microscope. A broad range of stands, caps, microscope tables and other accessories is offered. From affordable basic stands to a square metal base column stand. Or from an advanced XY table to a USB powered backlight. All original Dino-Lite accessories are made at the same high quality design and construction level.



**MS33W**

Round metal base with flexible arm



**MS34B**

Precision focus and stable viewing in a compact design



**MS09B**

An ultra-portable mini stand



**MS12C**

Variable view range caddy with two variable view range adapters



**MS23B**

Desktop clamp with flexible gooseneck that can be clamped to a desktop



**MS35B**

Square metal base with column and support providing several adaptable heights



**MS36B**

Identical to MS35B stand, but with an additional horizontal beam



**MS52B**

Dino-Lite heavy duty jointed flex arm stand. Also available with table base (BA2)



**MSAK810**

Adjustable flexible arm which can be attached to the pole of a MS35B/MS36B stand



**MS-W1**

Special stand for cylindric surfaces or to roll on flat surfaces



**MS15X**

Advanced XY table offers precision X- and Y-axis movement and 360 degree rotating



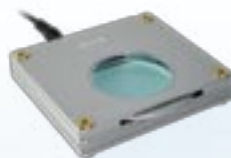
**MS16C**

Specimen holder with different clips to hold specimens



**SL-ZW1**

Polarized USB powered gooseneck light



**BL-ZW1**

USB or DC powered backlight with a built in, freely rotatable polarizer



**SW-F1**

Foot pedal accessory allowing you to take a picture with your foot

## DinoCapture Software

A professional, reliable software environment is essential when working with computer accessories like an USB microscope. All Dino-Lite USB products are equipped with an in-house developed software suite. The Dino-Capture software is continuously developed, is free of charge for Dino-Lite users and has an automatic update feature. DinoCapture software is available for Windows and Macintosh computers. DinoCapture software is intuitive, user-friendly and can be used without hardly any training. Free online & e-mail software support is available for all Dino-Lite users

### Main software features

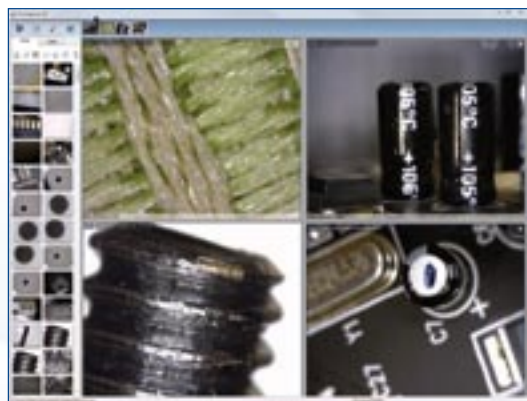
- > Capturing photographs, videos or time-lapsed videos
- > Saving pictures in several formats
- > Advanced Image processing
- > Measurement options like: line, radius, circle, 3-point circle, angle, etc.
- > Measurements on captured images or on live images
- > Calibration options
- > E-mail integration
- > Adding text to images
- > Skype/MSN integration for real-time on-line sharing with suppliers, customers or colleagues
- > Connect multiple Dino-Lite microscopes
- > Controlling lighting options from the software

### Languages

The DinoCapture 2.0 software is available in many languages, such as: English, German, French, Spanish, Chinese, Japanese, Portuguese, Italian, Russian, Dutch, Greek, Hungarian, Polish, Romanian, Swedish, Finnish, Danish, Czech, Croatian, Norwegian, Turkish.

### SDK, Software Development Kit

Dino-Lite offers a software development kit which allows developers to easily add control of Dino-Lite digital microscopes. It works with any Windows-compatible device and offers the complete control over LED and Microtouch on the Dino-Lite. Moreover, it provides simple methods for extracting color, real-time binary image, image comparing, etc. The SDK is available free of charge for Dino-Lite partners and users.



DinoCapture 2.0



Compatible with  
Windows XP®,  
Windows Vista®, Windows 7®

DinoXcope



Compatible with Mac OSX®  
except for Dino-Lite Pro HR  
5 megapixel models



SDK



[www.dino-lite.eu](http://www.dino-lite.eu)

*Redefine the microscope*