

Customer Information Sheet

DRAWING No.: M50-330XX42

SHEET 2 OF 2

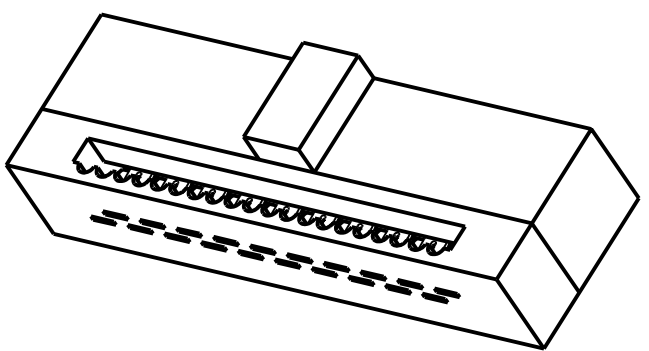
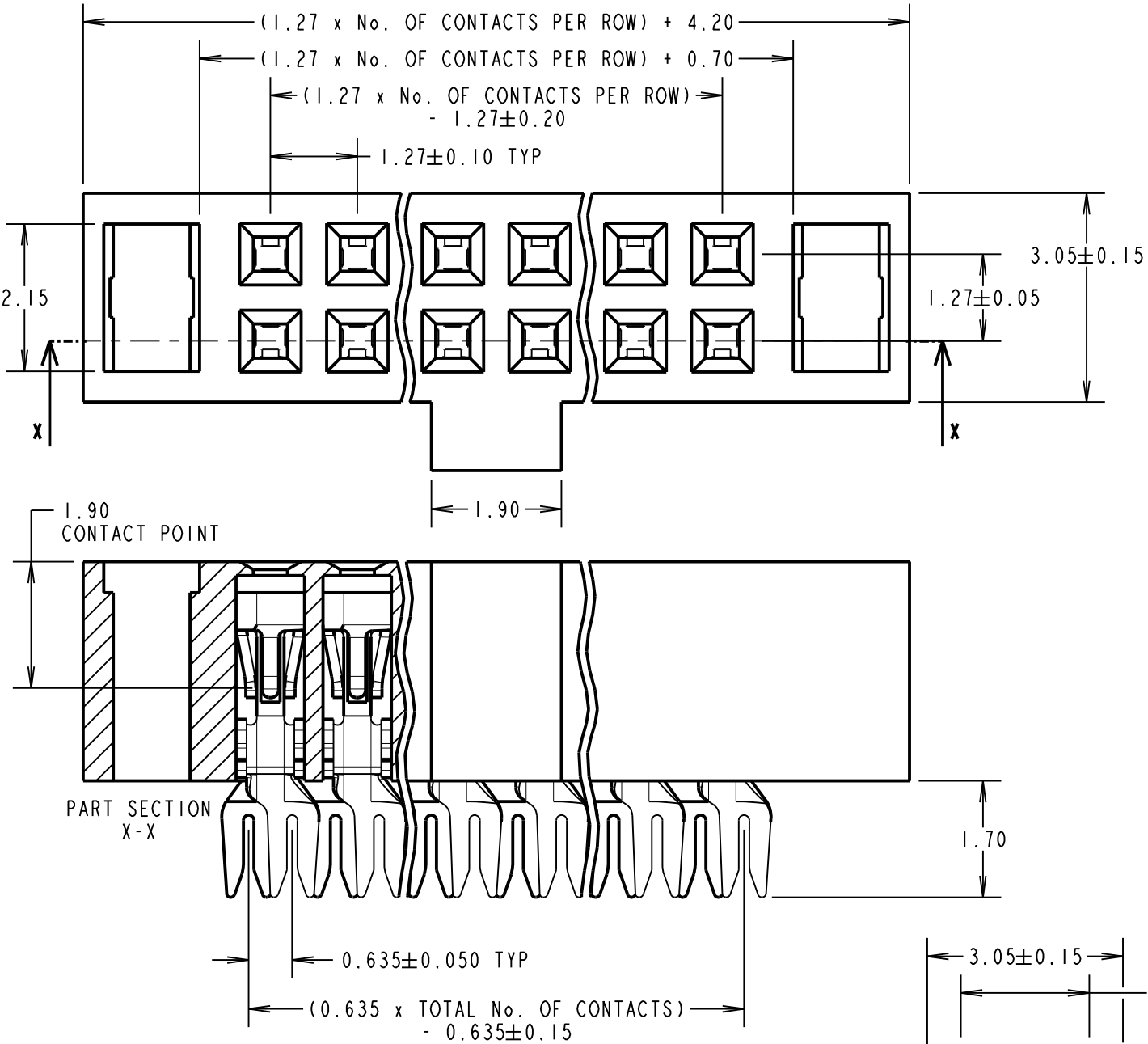
IF IN DOUBT - ASK

©

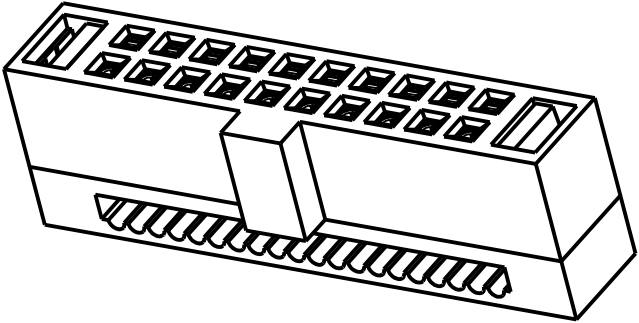
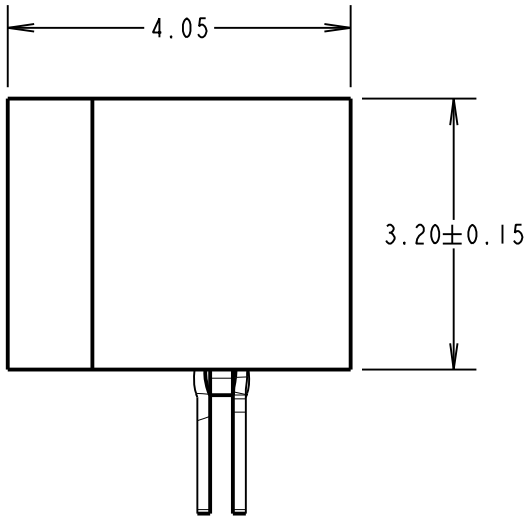
NOT TO SCALE

THIRD ANGLE PROJECTION

ALL DIMENSIONS IN mm

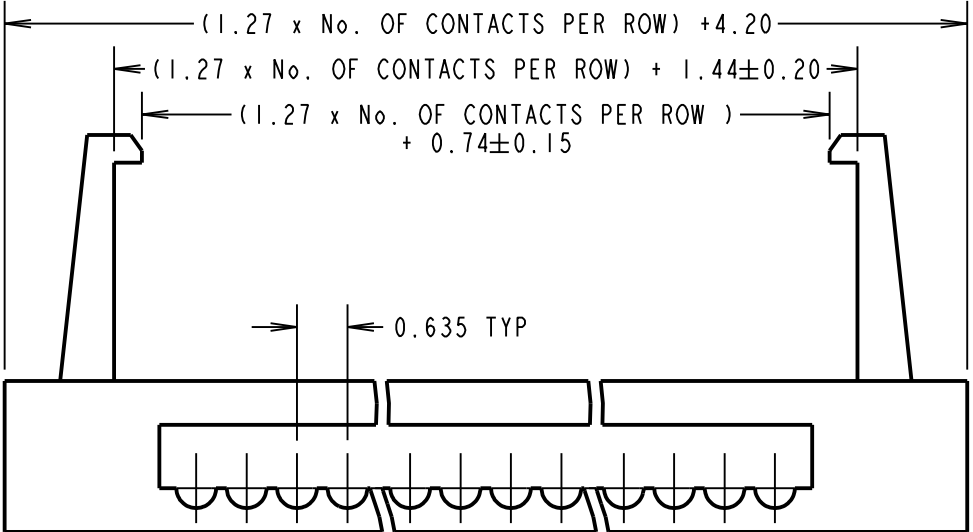
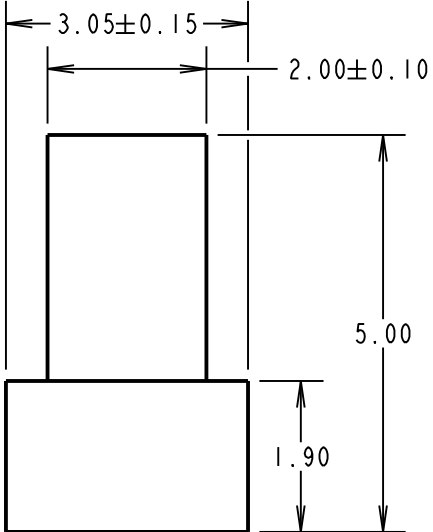


SPECIFICATIONS:
MATERIALS:
MOULD & CAP= PBT, 30% G/F, UL94V-0
CONTACT = PHOSPHOR BRONZE
FINISH:
42 = 0.015-0.02µ GOLD ON CONTACTS,
2.54µ 100% TIN ON TAILS,
OVER 0.76-2.03µ NICKEL
ELECTRICAL:
RATED CURRENT = 1A
CONTACT RESISTANCE = 20mΩ MAX
WITHSTAND VOLTAGE = 1000V ACrms FOR 1 MIN
INSULATION RESISTANCE = 1000MΩ MIN
ENVIRONMENTAL:
OPERATING TEMPERATURE = -40°C TO +105°C
PACKING:
TUBE
FOR COMPLETE SPECIFICATION, SEE COMPONENT SPECIFICATION C029XX (LATEST ISSUE)



- NOTES:
1. ALL TOLERANCES ARE ± 0.25 UNLESS OTHERWISE STATED.
2. CONNECTOR IS RoHS AND REACH COMPLIANT.
3. CONNECTOR IS TO BE USED WITH 30AWG WIRE.

ORDER CODE: **M50-330XX42**
No.OF CONTACTS PER ROW:
05, 10, 13, 17, 20, 25
FINISH:
SELECTIVE GOLD, TIN



SB	6	20.11.13	12278
NAME	ISS.	DATE	C/NOTE
APPROVED:		S.BENNETT	
CHECKED:		M.PLESTED	
DRAWN:		R.ADDE	
CUSTOMER REF.:			
ASSEMBLY DRG:			

HARWIN
www.harwin.com
technical@harwin.com

THIS DRAWING AND ANY INFORMATION OR DESCRIPTIVE MATTER SET OUT HEREON ARE CONFIDENTIAL AND COPYRIGHT PROPERTY OF THE HARWIN GROUP AND MUST NOT BE DISCLOSED, LOANED, COPIED OR USED FOR MANUFACTURING, TENDERING OR FOR ANY OTHER PURPOSE WITHOUT THEIR WRITTEN PERMISSION.

TOLERANCES
% = $\pm 1\text{mm}$
X.X = $\pm 0.25\text{mm}$
X.XX = $\pm 0.10\text{mm}$
X.XXX = $\pm 0.01\text{mm}$
ANGLES = $\pm 5^\circ$
UNLESS STATED

MATERIAL:
SEE ABOVE
FINISH: SEE ABOVE
S/AREA: mm²

TITLE:
1.27mm DIL IDC
RIBBON CABLE CONNECTOR
DRAWING NUMBER:
M50-330XX42
SHT 2 OF 2