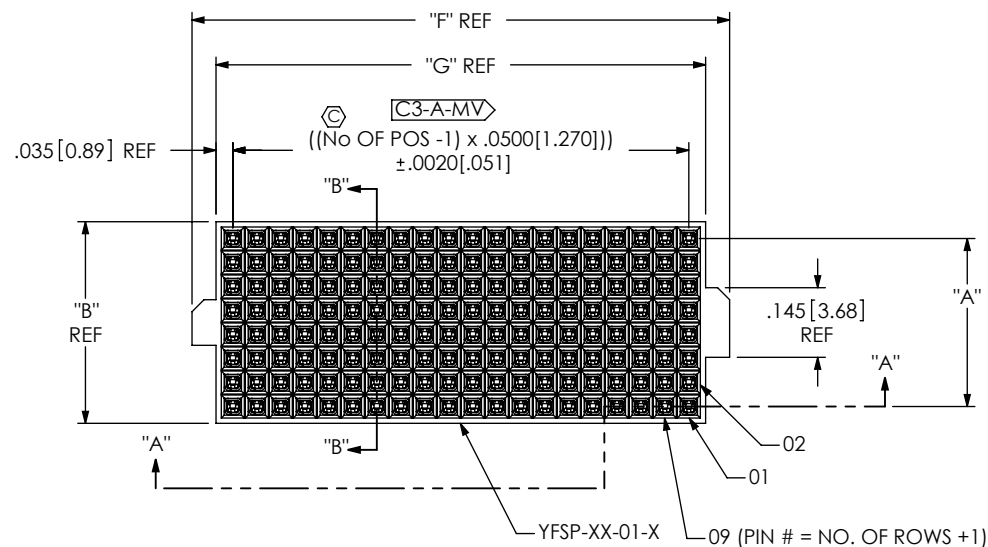


DO NOT
SCALE FROM
THIS PRINT**R** YFS-XX-X3-X-XX-SB-XXNo OF POSITIONS
-20, -30, -40, -50
(PER ROW)

OPTION

-K: KAPTON PAD
(SEE FIG 2, SHT 2)
-TR: TAPE & REEL
(SEE NOTE 17)

LEAD STYLE

-03: PIN / SOLDERBALLS
(USE C-140-03-X, SEE FIG 1)
-L3: PIN / SOLDERBALLS
(LOW INSERTION FORCE)
(USE C-226-03-X)

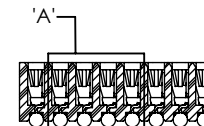
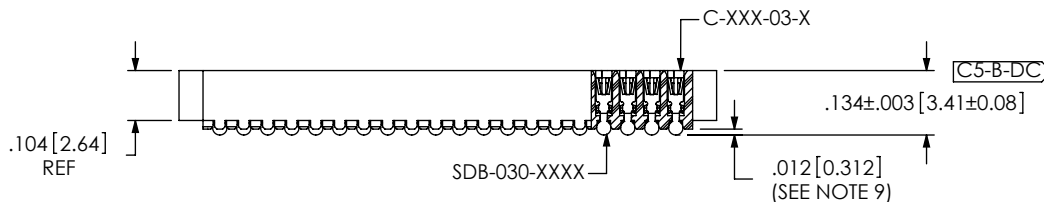
PLATING SPECIFICATION

-G: GOLD (USE C-XXX-03-G)
(SEE NOTE 7)
-H: HEAVY GOLD (USE C-XXX-03-H)
-E: EXTRA GOLD (USE C-XXX-03-E)
(SEE NOTE 7)

SOLDER BALLS

-SB: SOLDER BALL
(USE SDB-030-6337)
37% Pb/63% Sn

ROW SPECIFICATION

-05: FIVE (USE YFSP-XX-01-F)
-08: EIGHT (USE YFSP-XX-01-E)
-10: TEN (USE YFSP-XX-01-T)
-06: SIX (USE YFSP-XX-01-6)
(AVAILABLE IN 20 POS ONLY)
-03: THREE (USE YFSP-XX-01-3)
(AVAILABLE IN 20 POS ONLY)
(SEE NOTE 17)

SECTION "B"- "B"

NOTES:

1. C REPRESENTS A CRITICAL DIMENSION.
2. NOTE DELETED.
3. MAXIMUM BURR ALLOWANCE: .0005[0.013]
4. MINIMUM PUSHOUT FORCE: .5 LB.
5. NOTE DELETED.
6. CONTACT TO BE FLUSH $\pm .002[0.05]$.
TO BE MEASURED AT ALL FOUR CORNERS.
7. ONE REEL MINIMUM PLATING REQUIREMENT
(85,000 CONTACTS PER REEL)
8. ALL DIMS TO BE SYMMETRICAL ABOUT THE
CENTERLINE WITHIN $\pm .001[0.03]$.
9. .0025[0.064] MAX VARIATION BETWEEN
SOLDERBALLS.
10. REFER TO VISUAL INSPECTION BOARD FOR
SOLDERBALL APPEARANCE CHECKS.
11. THE DISTANCE FROM THE CENTER OF ANY
SOLDERBALL TO THE CENTER OF ANY
ADJACENT INNER PEG SHALL BE
 $.025 \pm .005[0.64 \pm 0.13]$.
12. NOTE DELETED.
13. NOTE DELETED.
14. NOTE DELETED.
15. NOTE DELETED.
16. NO FLASH ALLOWED ON THE PIN TIPS.
17. IF -TR OPTION IS NOT SPECIFIED, PARTS TO BE
PACKAGED IN TRAYS. PARTS WITH -03 ROW
SPECIFICATION NOT VALID WITHOUT -TR OPTION.

TABLE 2 - SOLDERBALL PARTS ONLY				
PART (POSITION)	20	30	40	50
MAX COPLANARITY	.004[0.10]	.007[0.18]	.008[0.20]	.008[0.20]
MAX T/B BOW *	.002[0.05]	.002[0.05]	.002[0.05]	.0025[0.064]

* AFTER SOLDERBALL ATTACHMENT

FIG 1

YFS-20-X3-X-08-SB SHOWN

R

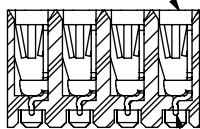
TABLE 1		
ROW	"A"	"B"
-03	.1000	.170
-05	.2000	.270
-06	.2500	.320
-08	.3500	.420
-10	.4500	.520

TABLE 3		
POS	"F"	"G"
-20	1.120	1.020
-30	1.620	1.520
-40	2.120	2.020
-50	2.620	2.520

C2-B-I-MV**R****C4-B-VS**

IN-PROCESS WITHOUT SOLDERBALLS

SEE NOTE 6

DETAIL "A"
SCALE 5:1

SEE NOTE 16

CRITICAL DIMENSION INSPECTION INSTRUCTION TABLE	
ASSEMBLY OPERATION	IN-PROCESS INSPECTION
FILL C-XXX-XX-X	C2, C3
ATTACH SDB-XXX-XXXX	C3, C4
REPRESS SOLDER BALL	C5
FINISHED GOOD INSPECTION	C1, C2, C3, C5

UNLESS OTHERWISE SPECIFIED,
DIMENSIONS ARE IN INCHES.

TOLERANCES ARE:

DECIMALS ANGLES
.XX: $\pm .01[.3]$ 2°
.XXX: $\pm .005[.13]$
.XXXX: $\pm .0020[.051]$

PROPRIETARY NOTE

THIS DOCUMENT CONTAINS INFORMATION
CONFIDENTIAL AND PROPRIETARY TO
SAMTEC, INC. AND SHALL NOT BE REPRODUCED
OR TRANSFERRED TO OTHER DOCUMENTS OR
DISCLOSED TO OTHERS OR USED FOR ANY
PURPOSE OTHER THAN THAT WHICH IT WAS
OBTAINED WITHOUT THE EXPRESSED WRITTEN
CONSENT OF SAMTEC, INC.

MATERIAL:

INSULATOR: LCP, COLOR: BLACK
CONTACT: PHOS BRONZE

DO NOT SCALE DRAWING

SHEET SCALE: 2.5:1

DESCRIPTION:

.050[1.27] MULTI-ROW SOCKET ASSEMBLY

DWG. NO.

YFS-XX-X3-X-XX-SB-XX

BY: KEVIN B

4/22/99

SHEET 1 OF 2

520 PARK EAST BLVD, NEW ALBANY, IN 47150
PHONE: 812-944-6733 FAX: 812-948-5047
e-Mail: info@SAMTEC.com code 55322

R FIG 2
-K: KAPTON PAD
YFS-20-X3-X-08-SB-K SHOWN

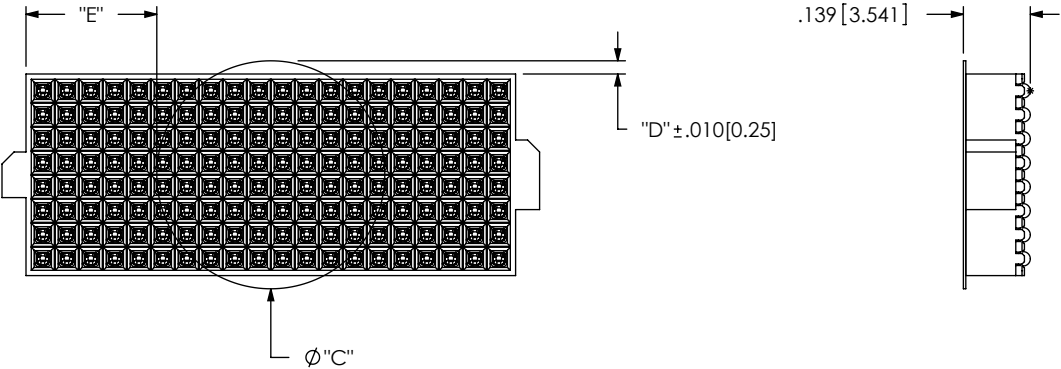


TABLE 5							
ROW	"C"	"D"	"E"				KAPTON TAPE
			-20 POS	-30 POS	-40 POS	-50 POS	
-03	.217	.024	.4015	.6515	.9015	1.1515	K-500-300
-05	.305	.018	.3575	.3075	.8595	1.1075	K-850-650
-06	.354	.017	.3330	.5830	.8330	1.0830	K-850-650
-08	.475	.028	.2725	.5225	.7725	1.0225	K-850-650
-10	.575	.028	.2225	.4725	.7225	0.9725	K-850-650

F:\DWG\MISC\MKTG\YFS-XX-X3-X-XX-SB-XX-MKT.SLDDRW

PROPRIETARY NOTE
THIS DOCUMENT CONTAINS INFORMATION
CONFIDENTIAL AND PROPRIETARY TO
SAMTEC, INC. AND SHALL NOT BE REPRODUCED
OR TRANSFERRED TO OTHER DOCUMENTS OR
DISCLOSED TO OTHERS OR USED FOR ANY
PURPOSE OTHER THAN THAT WHICH IT WAS
OBTAINED WITHOUT THE EXPRESSED WRITTEN
CONSENT OF SAMTEC, INC.

DO NOT SCALE DRAWING

SHEET SCALE: 2.5:1



520 PARK EAST BLVD, NEW ALBANY, IN 47150
PHONE: 812-944-6733 FAX: 812-948-5047
e-Mail info@SAMTEC.com code 55322

DESCRIPTION:
.050[1.27] MULTI-ROW SOCKET ASSEMBLY

DWG. NO. YFS-XX-X3-X-XX-SB-XX

BY: KEVIN B 4/22/99 SHEET 2 OF 2