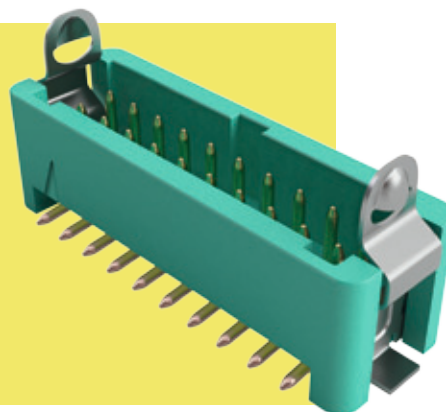


Gecko Connectors

Male PC Tail & Surface Mount

- ❖ Secure fixing to the PCB via hold-down tabs (SMT) or retention barbs for through hole.
- ❖ Easy-to-release latches require no tooling.
- ❖ 2A current capacity, resists high vibration and shock.
- ❖ Withstands extremes of temperature: -65°C to +150°C.



GECKO

PC TAIL		SURFACE MOUNT																	
<p>Recommended PC Board Pattern</p>		<p>Recommended PC Board Pattern</p>																	
<table><tr><th colspan="2">CALCULATION</th></tr><tr><td>A</td><td>B + 3.8</td></tr><tr><td>B</td><td>0.625 x (Total no. of contacts - 2)</td></tr><tr><td>C</td><td>B + 4.85</td></tr></table>		CALCULATION		A	B + 3.8	B	0.625 x (Total no. of contacts - 2)	C	B + 4.85										
CALCULATION																			
A	B + 3.8																		
B	0.625 x (Total no. of contacts - 2)																		
C	B + 4.85																		
HOW TO ORDER																			
<p>G125 - M XX XX 05 LX X</p>																			
<table><tr><th colspan="2">SERIES CODE</th></tr><tr><th colspan="2">TYPE</th></tr><tr><td>V1</td><td>3mm PC Tail</td></tr><tr><td>V2</td><td>4.5mm PC Tail</td></tr><tr><td>S1</td><td>Surface Mount</td></tr></table>		SERIES CODE		TYPE		V1	3mm PC Tail	V2	4.5mm PC Tail	S1	Surface Mount	<table><tr><th colspan="2">PACKAGING</th></tr><tr><td>R</td><td>Tape & Reeled</td></tr><tr><td>P</td><td>Loose</td></tr></table>		PACKAGING		R	Tape & Reeled	P	Loose
SERIES CODE																			
TYPE																			
V1	3mm PC Tail																		
V2	4.5mm PC Tail																		
S1	Surface Mount																		
PACKAGING																			
R	Tape & Reeled																		
P	Loose																		
<table><tr><th colspan="2">TOTAL NO. OF CONTACTS</th></tr><tr><td colspan="2">06, 10, 12, 16, 20, 26, 34, 50</td></tr></table>		TOTAL NO. OF CONTACTS		06, 10, 12, 16, 20, 26, 34, 50		<table><tr><th colspan="2">LATCH</th></tr><tr><td>L0</td><td>No Latch</td></tr><tr><td>L1</td><td>Latch for 1.6mm PCB</td></tr><tr><td>L2</td><td>Latch for 2.4mm PCB</td></tr><tr><td>L3</td><td>Surface Mount Latch</td></tr></table>		LATCH		L0	No Latch	L1	Latch for 1.6mm PCB	L2	Latch for 2.4mm PCB	L3	Surface Mount Latch		
TOTAL NO. OF CONTACTS																			
06, 10, 12, 16, 20, 26, 34, 50																			
LATCH																			
L0	No Latch																		
L1	Latch for 1.6mm PCB																		
L2	Latch for 2.4mm PCB																		
L3	Surface Mount Latch																		
		<table><tr><th colspan="2">FINISH</th></tr><tr><td>05</td><td>Gold </td></tr></table>		FINISH		05	Gold												
FINISH																			
05	Gold																		

All dimensions in mm.

Patent Pending – UK 1205109.0