

PK50B1/4 Product Details

[Share](#) [Print](#) [Email](#)


PK50B1/4

TE Internal Number:
1437624-6

 **Active**

Knobs

 Always EU RoHS/ELV Compliant (Statement of Compliance)

Product Highlights:

- Knob
- Straight Knurl Knob Design
- Indicator Style = Dot
- Indicator Location = On Skirt
- With Skirt

[View all Features](#)

Quick Links

- ▶ [Pricing & Availability](#)
- ▶ [Search for Tooling](#)
- ▶ [Product Feature Selector](#)
- ▶ [Contact Us About This Product](#)

[Add to My Part List](#)

[Request Sample](#)

[Find Similar Products](#)

[Buy Product](#)

Documentation & Additional Information

Product Drawings:

- None Available

Catalog Pages/Data Sheets:

- None Available

Product Specifications:

- None Available

Application Specifications:

- None Available

Instruction Sheets:

- None Available

CAD Files:

- None Available

Related Products:

- [Tooling](#)

Product Features (Please use the Product Drawing for all design activity)

Product Type Features:

- Product Type = Knob
- Series = PK

Dimensions:

- Diameter (mm [in]) = 19.00 [0.748]

Body Features:

- Shaft Size (mm [in]) = 6.35 [0.250]

Configuration Features:

- Knob Design = Straight Knurl
- Indicator Style = Dot
- Indicator Location = On Skirt
- Skirt = With

Industry Standards:

- [RoHS/ELV Compliance](#) = RoHS compliant, ELV compliant
- [Lead Free Solder Processes](#) = Not relevant for lead free process
- RoHS/ELV Compliance History = Always was RoHS compliant

Other:

- Brand = Alcoswitch
- Comment = Top spun aluminum inlay

Corporate Information

[About TE](#)
[Investors](#)

Quick Links

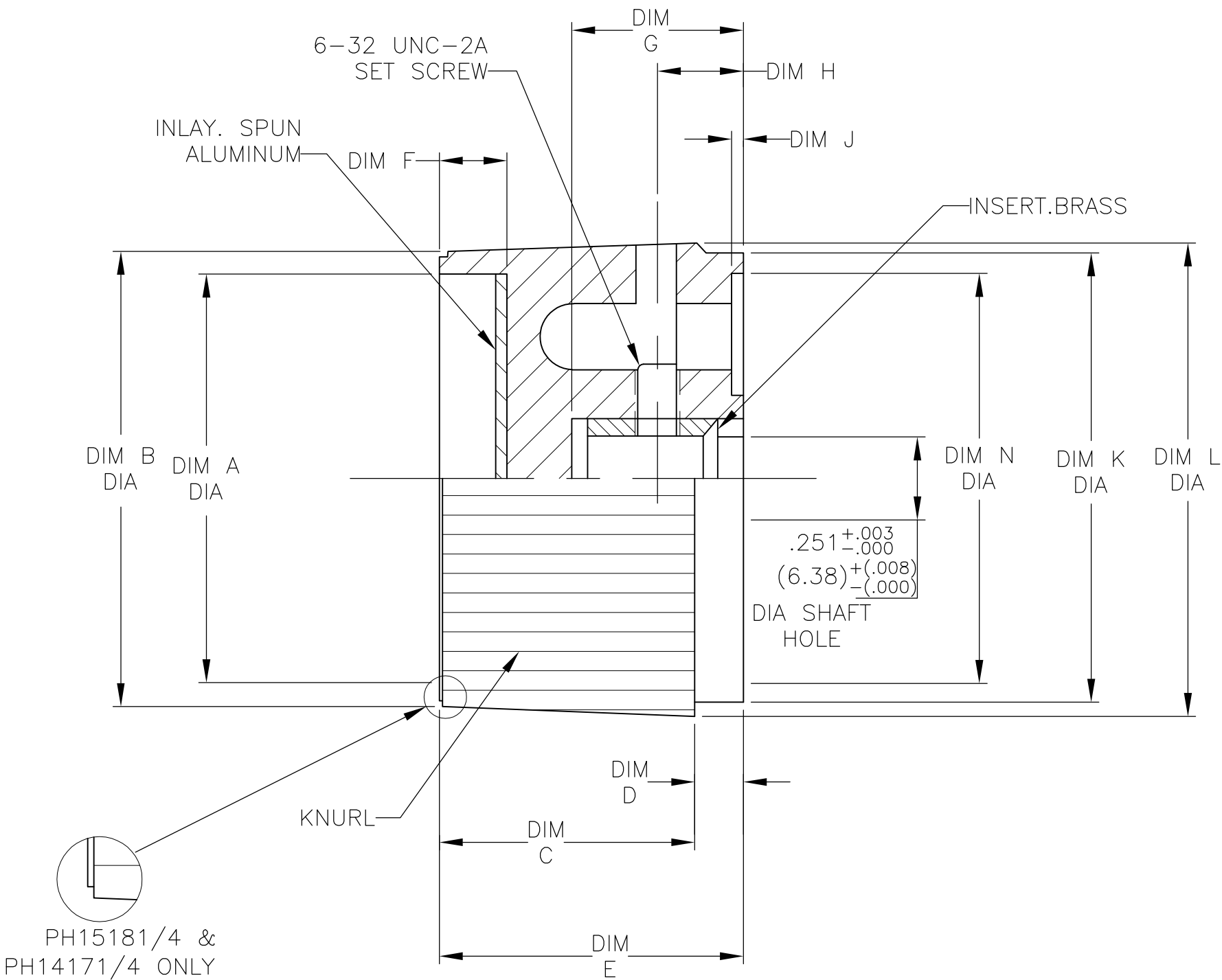
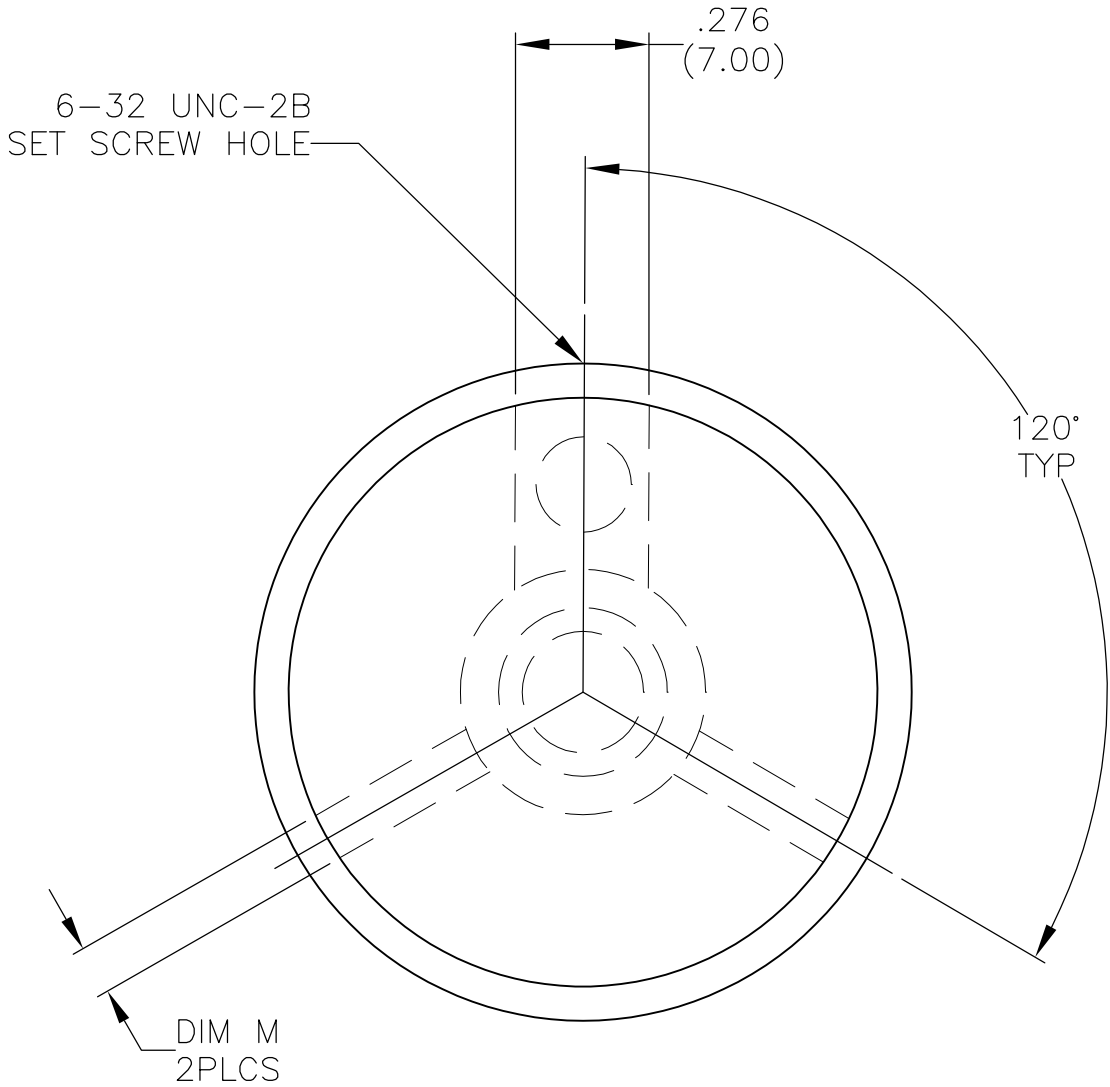
[Distributor Inventory](#)
[Product Cross Reference](#)



Customer Support

[Email or Chat With Us](#)
[Find a Phone Number](#)

LOC	DIST	REVISIONS					
		P	LTR	DESCRIPTION	DATE	DWN	APVD
AD	00		A2	ECO-08-001233	16JAN08	MB	MW



DIMENSIONS														TE PT. NO.
MODEL NO.	DIM A	DIM B	DIM C	DIM D	DIM E	DIM F	DIM G	DIM H	DIM J	DIM K	DIM L	DIM M	DIM N	
PH15181/4	.799 (20.30)	.972 (24.70)	.512 (13.00)	.157 (4.00)	.669 (17.00)	.118 (3.00)	.472 (12.00)	.276 (7.00)	.098 (2.50)	.937 (23.80)	.996 (25.30)	.079 (2.00)	.823 (20.90)	1437624-2
PH14171/4	.988 (25.10)	1.161 (29.50)	.591 (15.00)	.079 (2.00)	.669 (17.00)	.138 (3.50)	.445 (11.30)	.256 (6.50)	.098 (2.50)	1.102 (28.00)	1.193 (30.30)	.079 (2.00)	1.024 (26.00)	1437624-1
PH13161/4	1.201 (30.50)	1.339 (34.00)	.764 (19.40)	.142 (3.60)	.906 (23.00)	.197 (5.00)	.512 (13.00)	.256 (6.50)	--	1.319 (33.50)	1.402 (35.60)	.098 (2.50)	--	2-1437625-5

OBSOLETE
OBSOLETE

WAS DWG 80992

THIS DRAWING IS A CONTROLLED DOCUMENT.		DWN BSV	06JUL04	Tyco Electronics Corporation Harrisburg, Pa 17105-3608							
DIMENSIONS: mm [INCHES]		CHK —	—								
		APVD M ZITTO		NAME KNOB PH SERIES —							
		PRODUCT SPEC —		SIZE A2							
MATERIAL PHENOLIC		FINISH —		APPLICATION SPEC —		CAGE CODE 00779		DRAWING NO C=1437624-1		RESTRICTED TO —	
CUSTOMER DRAWING				SCALE 1:1		SHEET 1 OF 1		REV A2			