

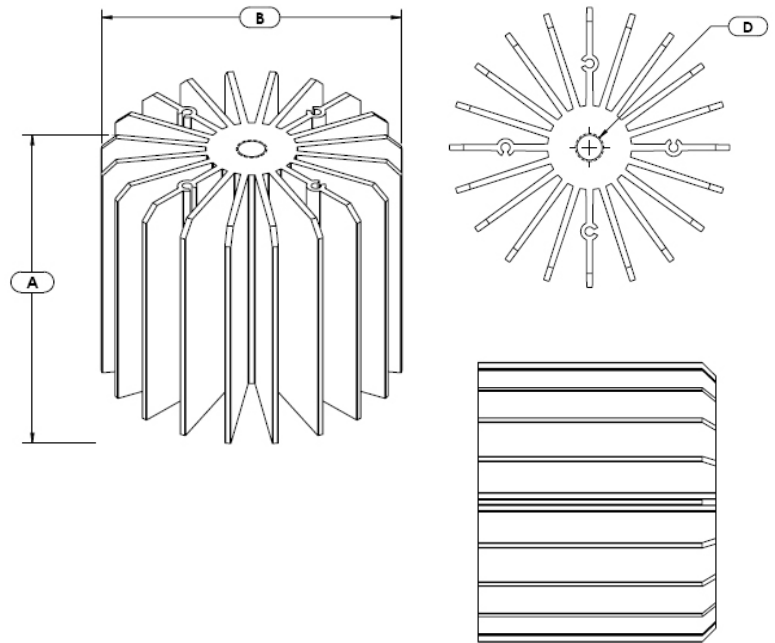
# Star LED Heat Sink



**ATS PART # ATSEU-110-C2-R0**

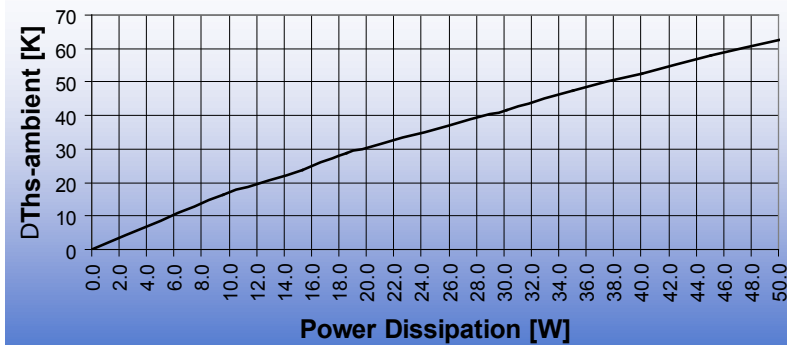
## Features & Benefits

- » Designed for high-performance convection cooling of high heat flux LEDs
- » Base includes inner threads for attachment of brackets and other hardware
- » Each Star series heat sink is made from lightweight, anodized aluminum for maximum thermal performance



## Thermal Performance

FOR ILLUSTRATION PURPOSES ONLY



## Product Details

LENGTH (A)	DIAMETER (B)	OUTER THREAD (C)	INNER THREAD (D)	WEIGHT	FINISH
95 mm	100 mm	M101X1.0	M10X1	50 G	BLACK

### NOTES:

- 1) Thermal Performance data are provided for reference only- Actual performance may vary by application
- 2) ATS reserves the right to update or change its products without notice
- 3) Contact ATS to learn about custom options available



**ATS** ADVANCED  
THERMAL  
SOLUTIONS, INC.  
Innovations in Thermal Management®

**For more information, to find a distributor or to place an order, visit [www.Qats.com](http://www.Qats.com) or call: 781.769.2800 (North America); +31 (0) 3569 84715 (Europe).**