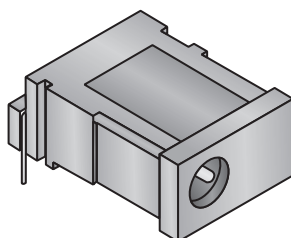


# DC Power Connector

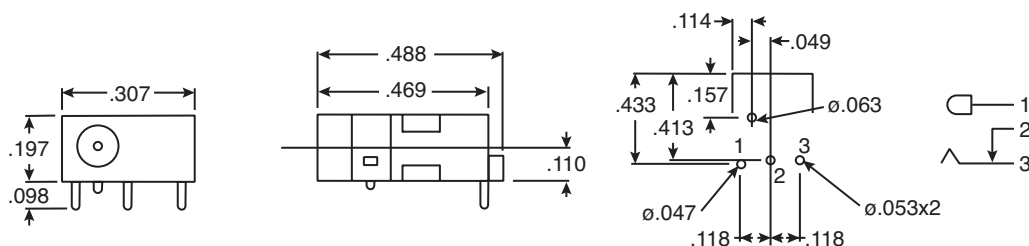
## 163-4312-EX



DC Power Connector



Dimensions: In.



### SPECIFICATIONS

Rating power:	3.15 VDC @ 2A
Dielectric strength:	500VAC/1 min.
Insulation resistance:	100mΩ min.
Contact resistance:	30mΩ max.
Voltage breakdown:	500VAC

RoHS Compliant by Exemption

Part No.	Description	Mating Plug O.D. (in.)	Center Pin	
			D (in.)	L (in.)
163-4312-EX	0.7mm, molded with PC pins and N/C switch	.093	.026	.335

Date Last Revised: 4-6-04

Available from Mouser Electronics  
1-800-346-6873  
www.mouser.com

KC-300875

163-4312-EX

# Mouser Electronics

Authorized Distributor

Click to View Pricing, Inventory, Delivery & Lifecycle Information:

[Kobiconn:](#)

[163-4312-EX](#)