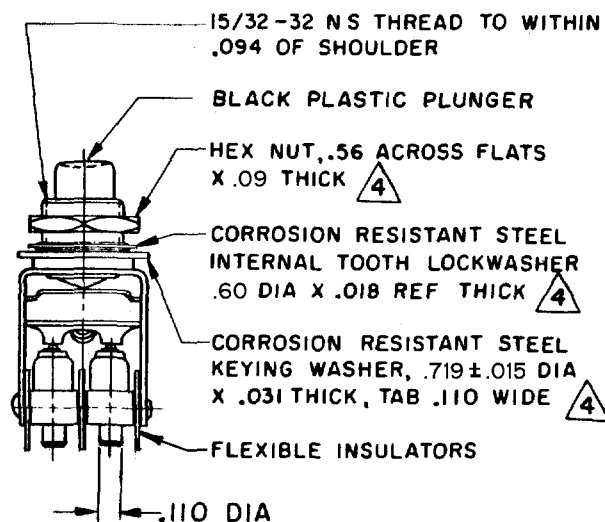
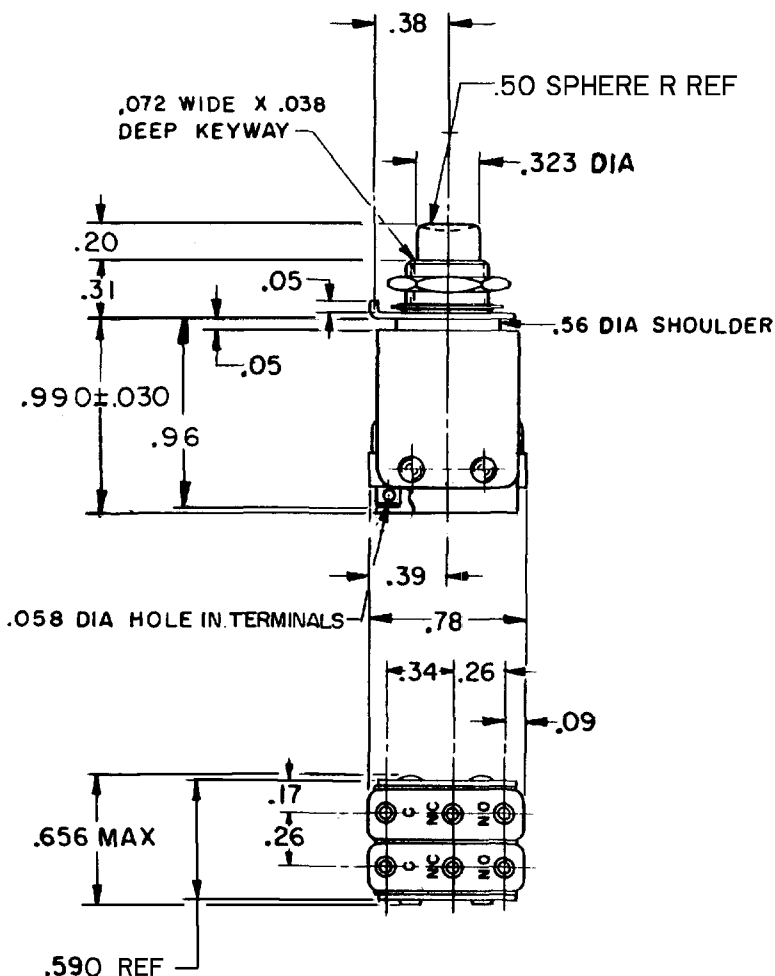


**MICRO SWITCH**FREEPORT, ILLINOIS, U. S. A.
A DIVISION OF HONEYWELL

FED. MFG. CODE 91929

**ASSEMBLY -
PUSHBUTTON SWITCH**

CATALOG LISTING

2PB11**NOTES**

- 1- UNIT INCLUDES "IISM" TYPE BASIC SWITCH (2)
- 2- TERMINALS ARE PLATED FOR SOLDERING
- 3- SWITCHES DO NOT NECESSARILY OPERATE SIMULTANEOUSLY
- (4) MOUNTING HARDWARE FURNISHED UNASSEMBLED

THIS DRAWING COVERS A PROPRIETARY ITEM AND IS THE PROPERTY OF MICRO SWITCH, A DIVISION OF HONEYWELL. THIS DRAWING IS NOT TO BE COPIED OR USED WITHOUT THE APPROVAL OF MICRO SWITCH.

CHARACTERISTICS	ELECTRICAL DATA	SCALE FULL
OPERATING FORCE — — 30 OZ APPROX	CONTACT ARRANGEMENT S P D T (2)	DO NOT SCALE PRINT
PRETRAVEL — — — — .040 APPROX	250 VAC — — — — — 5 AMP	UNLESS OTHERWISE NOTED
DIFFERENTIAL TRAVEL — — — .050 MAX	30 VOLTS DC RATING	DIMENSIONS ARE IN INCHES
(B) TOTAL TRAVEL — — — — .110 APPROX	INDUCTIVE — — — SEA LEVEL — — — 3 AMP	TOLERANCES ARE:
	50,000 FT — — — 2.5 AMP	ONE PLACE (.0) ±.030
	RESISTIVE — — — SEA LEVEL — — — 5 AMP	TWO PLACE (.00) ±.015
	50,000 FT — — — 5 AMP	THREE PLACE (.000) ±.005
	MAXIMUM INRUSH — — — — — 24 AMP	ANGLES ±
		WEIGHT

2PB11

PAGE 1 OF 1

MDRAWING
NUMBER

1516

ISSUE

REVISIONS

A	CO19800	22 OCT 98
M B F		
12 FEB 65		
B	CO21022	22 FEB 66
M B F		
22 FEB 66		
C	CO30742	2 OCT 72
R E R		
2 OCT 72		
D	CO31782	16 MAR 73
D B W		
16 MAR 73		
E	CO-93593	22 OCT 98
P P F		
22 OCT 98		
F	CO-94273	15 APR 99
G J W		
15 APR 99		

FORMTEK

FC-50378

DRAWN

REPLACES

RELEASE NO.

CHECK

CHECK

CHECK

CHECK

CHECK

CHECK

CHECK

CHECK

CHECK

CHECK

CHECK

CHECK

CHECK

CHECK

CHECK

CHECK

CHECK

CHECK

CHECK

CHECK

CHECK

CHECK

CHECK

CHECK

CHECK

Mouser Electronics

Authorized Distributor

Click to View Pricing, Inventory, Delivery & Lifecycle Information:

[Honeywell:](#)

[2PB11](#)