



# USB1T20 — Universal Serial Bus Transceiver

## Features

- Complies with Universal Serial Bus Specification 2.0 for FS/LS Applications
- Utilizes Digital Inputs and Outputs to Transmit and Receive USB Cable Data
- Supports 12Mbit/s Full Speed (FS) and 1.5Mbit/s Low Speed (LS) Serial Data Transmission
- Supports Single-ended and Differential Data Interface as Function of MODE
- Single 3.3 V Supply
- ESD Performance: Human Body Model
  - 9.5 kV on D-, D+ Pins Only
  - 4.0 kV on All Other Pins

## Description

USB1T20 is a generic USB 2.0 compliant transceiver. Using a single voltage supply, the USB1T20 provides an ideal USB interface solution for any electronic device able to supply 3.0 V to 3.6 V. It is designed to allow 5.0 V or 3.3 V programmable and standard logic to interface with the physical layer of the Universal Serial Bus (USB). It is capable of transmitting and receiving serial data at both full speed (12Mbit/s) and low speed (1.5Mbit/s) data rates.

Packaged in industry-standard TSSOP package. The USB1T20 is ideal for mobile electronics and other space-constrained applications.

## Ordering Information

Part Number	Operating Temperature Range	Package	Packing Method
USB1T20MTCX	-40° to +85°C	14-Lead, Thin-Shrink Small-Outline Package (TSSOP) JEDEC MO-153, 4.4mm Wide	Tape and Reel

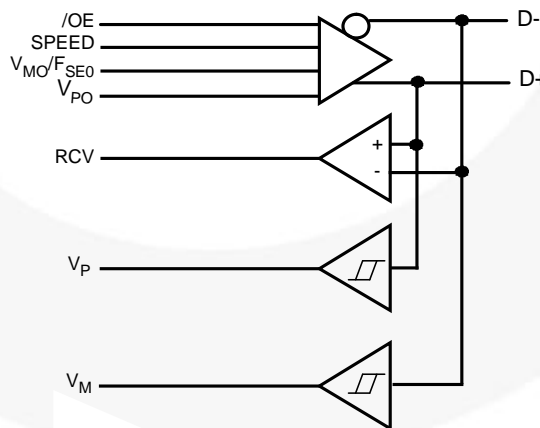


Figure 1. Logic Diagram

## Pin Configuration

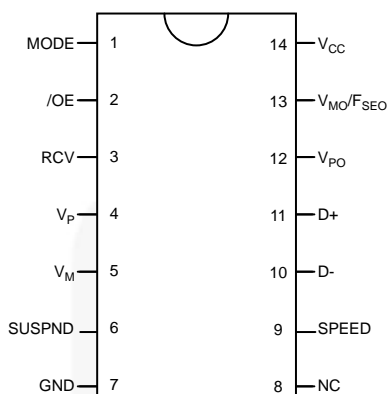


Figure 2. Pin Configuration (Top View)

## Pin Definitions

Pin #	Name	I/O	Description			
1	MODE	I	<b>Mode.</b> When left unconnected, a weak pull-up transistor pulls mode pin to V <sub>CC</sub> and, in this GND, the V <sub>MO</sub> /F <sub>SEO</sub> pin takes the function of F <sub>SEO</sub> (force SEO).			
2	/OE	I	<b>Output Enable.</b> Active LOW; enables the transceiver to transmit data on the bus. When not active, the transceiver is in receive mode.			
3	RCV	O	<b>Receive Data.</b> CMOS-Level output for USB differential input.			
4, 5	V <sub>P</sub> , V <sub>M</sub>	O	Gated version of D- and D+. Outputs are logic “0” and logic “1.” Used to detect single ended zero (/SEO), error conditions, and interconnected speed. (Input to SIE).			
			V <sub>P</sub>	V <sub>M</sub>	RESULT	
			0	0	/SEO	
			0	1	Low Speed	
			1	0	Full Speed	
			0	1	Error	
6	SUSPND	I	<b>Suspend.</b> Enables a low-power state while the USB bus is inactive. While the suspend pin is active, it drives the RCV pin to a logic “0” state. Both D+ and D- are 3-state.			
7	GND		Ground reference.			
8	NC		No connect.			
9	SPEED	I	<b>Edge Rate Control.</b> Logic “1” operates at edge rates for full speed. Logic “0” operates edge rates for low speed.			
10, 11	D-, D+	AI/O	Data+, Data-. Differential data bus conforming to the Universal Serial Bus standard.			
12, 13	V <sub>PO</sub> , V <sub>MO</sub> /F <sub>SEO</sub>	I	Inputs to differential driver. (Outputs from SIE.)			
			Mode	V <sub>PO</sub>	V <sub>MO</sub> /F <sub>SEO</sub>	RESULT
			0	0	0	Logic “0”
				0	1	/SEO
				1	0	Logic “1”
				1	1	/SEO
			1	0	0	/SEO
				0	1	Logic “0”
				1	0	Logic “1”
				1	1	Illegal Code
14	V <sub>CC</sub>		3.0 to 3.6 power supply.			

Functional Truth Table

Input					I/O		Outputs			
Mode	V <sub>PO</sub>	V <sub>MO</sub> /F <sub>SEO</sub>	/OE	SUSPND	D+	D-	RCV	V <sub>P</sub>	V <sub>M</sub>	Result
0	0	0	0	0	0	1	0	0	1	Logic "0"
0	0	1	0	0	0	0	Undefined State	0	0	/SEO
0	1	0	0	0	1	0	1	1	0	Logic "1"
0	1	1	0	0	0	0	Undefined State	0	0	/SEO
1	0	0	0	0	0	0	Undefined State	0	0	/SEO
1	0	1	0	0	0	1	0	0	1	Logic "0"
1	1	0	0	0	1	0	1	1	0	Logic "1"
1	1	1	0	0	1	1	Undefined State	Undefined State	Undefined State	Illegal Code
Don't Care	Don't Care	Don't Care	1	0	3-State	3-State	Undefined State	Undefined State	Undefined State	D+/D-Hi-Z
Don't Care	Don't Care	Don't Care	1	1	3-State	3-State	Undefined State	Undefined State	Undefined State	D+/D-Hi-Z

## Absolute Maximum Ratings

Stresses exceeding the absolute maximum ratings may damage the device. The device may not function or be operable above the recommended operating conditions and stressing the parts to these levels is not recommended. In addition, extended exposure to stresses above the recommended operating conditions may affect device reliability. The absolute maximum ratings are stress ratings only.

Symbol	Parameter	Min.	Max.	Unit
$V_{CC}$	DC Supply Voltage	-0.5	7.0	V
$I_{IK}$	DC Input Diode Current, $V_{IN} < 0$ V		-50	mA
$V_{IN}$	Input Voltage <sup>(1)</sup>	-0.5	5.5	V
$V_{I/O}$	Input / Output Voltage	-0.5	$V_{CC} + 0.5$	V
$I_{OK}$	Output Diode Current, $V_O > V_{CC}$ or $V_O < 0$ V		$\pm 50$	mA
$V_O$	Output Voltage <sup>(1)</sup>	-0.5	$V_{CC} + 0.5$	V
$I_O$	Output Source or Sink Current ( $V_O = 0$ to $V_{CC}$ )		$\pm 15$	mA
			$\pm 50$	
$I_{CC} / I_{GND}$	$V_{CC} / GND$ Current		$\pm 100$	mA
$T_{STG}$	Storage Temperature Range	-60	+150	°C

### Note:

- The input and output negative voltage ratings may be exceeded if the input and output diode current ratings are observed.

## Recommended Operating Conditions

The Recommended Operating Conditions table defines the conditions for actual device operation. Recommended operating conditions are specified to ensure optimal performance to the datasheet specifications. Fairchild does not recommend exceeding them or designing to Absolute Maximum Ratings.

Symbol	Parameter	Min.	Max.	Unit
$V_{CC}$	Supply Voltage	3.0	3.6	V
$V_{IN}$	Input Voltage	0	5.5	V
$V_{AI/O}$	Input Range for AI/O	0	$V_{CC}$	V
$V_O$	Output Voltage	0	$V_{CC}$	V
$T_A$	Operating Ambient Temperature, Free Air	-40	+85	°C

## DC Electrical Characteristics Digital Pins

Over the recommended range of supply voltage and operating free air temperature unless otherwise noted.  $V_{CC} = 3.0\text{ V to }3.6\text{ V}$ .

Symbol	Parameter	Conditions	T <sub>A</sub> = -40 to +85°C			Units
			Min.	Typ.	Max.	
Input Levels						
V <sub>IL</sub>	Low-Level Input Voltage				0.8	V
V <sub>IH</sub>	High-Level Input Voltage		2			V
Output Levels						
V <sub>OL</sub>	Low-Level Output Voltage	I <sub>OL</sub> = 4 mA			0.4	V
		I <sub>OL</sub> = 20 μA			0.1	
V <sub>OH</sub>	High-Level Output Voltage	I <sub>OH</sub> = 4 mA	2.4			V
		I <sub>OH</sub> = 20 μA	V <sub>CC</sub> -0.1			
Leakage Current						
I <sub>IN</sub>	Input Leakage Current	V <sub>CC</sub> = 3.0 to 3.6 V			±5	μA
I <sub>CCFS</sub>	Supply Current, Full Speed	V <sub>CC</sub> = 3.0 to 3.6 V			5	mA
I <sub>CCLS</sub>	Supply Current, Low Speed	V <sub>CC</sub> = 3.0 to 3.6 V			5	mA
I <sub>CCQ</sub>	Quiescent Supply Current	V <sub>CC</sub> = 3.0 to 3.6 V, V <sub>IN</sub> = V <sub>CC</sub> or GND			5	mA
I <sub>CCS</sub>	Supply Current in Suspend	V <sub>CC</sub> = 3.0 to 3.6 V, Mode = V <sub>CC</sub>			10	μA

## DC Electrical Characteristics D+/D- Pins

Over the recommended range of supply voltage and operating free air temperature unless otherwise noted.  $V_{CC} = 3.0\text{ V to }3.6\text{ V}$ .

Symbol	Parameter	Conditions	T <sub>A</sub> =-40 to +85°C			Units
			Min.	Typ.	Max.	
Input Levels						
V <sub>DI</sub>	Differential Input Sensitivity	(D+) – (D-)	0.2			V
V <sub>CM</sub>	Differential Common-Mode Range	Includes V <sub>DI</sub> Range	0.8		2.5	V
V <sub>SE</sub>	Single-Ended Receiver Threshold		0.8		2.0	V
Output Levels						
V <sub>OL</sub>	Static Output Low-Voltage	R <sub>L</sub> of 1.5 kΩ to 3.6 V			0.3	V
V <sub>OH</sub>	Static Output High-Voltage	R <sub>L</sub> of 1.5 kΩ to GND	2.8		3.6	V
V <sub>CR</sub>	Differential Crossover		1.3		2.0	V
Leakage Current						
I <sub>OZ</sub>	High-Z State Data Line Leakage Current	0 V<V <sub>IN</sub> <3.3 V			±5	μA
Capacitance						
C <sub>IN</sub>	Transceiver Capacitance <sup>(2)</sup>	Pin to GND			10	pF
	Capacitance Match <sup>(2)</sup>				10	%
Output Resistance						
Z <sub>DRV</sub>	Driver Output Resistance <sup>(3)</sup>	Steady-State Drive	4		20	Ω
	Resistance Match <sup>(3)</sup>				10	%

### Notes:

- This specification is guaranteed by design and statistical process distribution.
- Excludes external resistor. To comply with USB specification 1.1, external series resistors of  $24\text{ }\Omega \pm 1\%$  each on D+ and D- are recommended.

## AC Electrical Characteristics D+/D- Pins, Full Speed

Over the recommended range of supply voltage and operating free air temperature unless otherwise noted.

$V_{CC} = 3.0\text{ V to }3.6\text{ V}$ ;  $C_L = 50\text{ pF}$ ;  $R_L = 1.5\text{ k}\Omega$  on D+ to  $V_{CC}$ .

Symbol	Parameter	Conditions	T <sub>A</sub> =-40 to +85°C			Units
			Min.	Typ.	Max.	
Driver Characteristics						
t <sub>R</sub> , t <sub>F</sub>	Rise and Fall Time	10 and 90%, Figure 3	4		20	ns
t <sub>RFM</sub>	Rise/Fall Time Matching	t <sub>r</sub> / t <sub>f</sub>	90		110	%
V <sub>CRS</sub>	Output Signal Crossover Voltage		1.3		2.0	V
Driver Timings						
t <sub>PLH</sub>	Driver Propagation Delay (V <sub>PO</sub> , V <sub>MO</sub> /F <sub>SEO</sub> to D+D-)	Figure 4			18	ns
t <sub>PHZ</sub> , t <sub>PLZ</sub>	Driver Disable Delay (/OE to D+/D-)	Figure 6			13	ns
t <sub>PZH</sub> , t <sub>PZL</sub>	Driver Enable Delay (/OE to D+/D-)	Figure 6			17	ns
Receiver Timings						
t <sub>PLH</sub>	Receiver Propagation Delay D+/D- to RVC	Figure 5			16	ns
t <sub>PHL</sub>					19	ns
t <sub>PLH</sub> , t <sub>PHL</sub>	Single-ended Receiver Delay (D+,D- to V <sub>P</sub> , V <sub>M</sub> )	Figure 5			8	ns

## AC Electrical Characteristics D+/D- Pins, Low Speed

Over the recommended range of supply voltage and operating free air temperature unless otherwise noted.

$V_{CC} = 3.0\text{ V to }3.6\text{ V}$ ;  $C_L = 200\text{ pF to }600\text{ pF}$ ;  $R_L = 1.5\text{ k}\Omega$  on D- to  $V_{CC}$ .

Symbol	Parameter	Conditions	T <sub>A</sub> =-40 to +85°C			Units
			Min.	Typ.	Max.	
Driver Characteristics						
t <sub>LR</sub> , t <sub>LF</sub>	Rise and Fall Time	10 and 90%, Figure 3	75		300	ns
t <sub>RFM</sub>	Rise/Fall Time Matching	t <sub>r</sub> / t <sub>f</sub>	80		120	%
V <sub>CRS</sub>	Output Signal Crossover Voltage		1.3		2.0	V
Driver Timings						
t <sub>PLH</sub> , t <sub>PHL</sub>	Driver Propagation Delay (V <sub>PO</sub> , V <sub>MO</sub> /F <sub>SEO</sub> to D+/D-)	Figure 4			300	ns
t <sub>PHZ</sub> , t <sub>PLZ</sub>	Driver Disable Delay (/OE to D+/D-)	Figure 6			13	ns
t <sub>PZH</sub> , t <sub>PZL</sub>	Driver Enable Delay (/OE to D+/D-)	Figure 6			205	ns
Receiver Timings						
t <sub>PLH</sub> , t <sub>PHL</sub>	Receiver Propagation Delay (D+/D- to RVC)	Figure 5			18	ns
t <sub>PLH</sub> , t <sub>PHL</sub>	Single-ended Receiver Delay (D+, D- to V <sub>P</sub> , V <sub>M</sub> )	Figure 5			28	ns

## AC Loadings and Waveforms

$V_{OL}$  and  $V_{OH}$  are the typical output voltage drops that occur with the output load.  $V_{CC}$  never goes below 3.0 V.

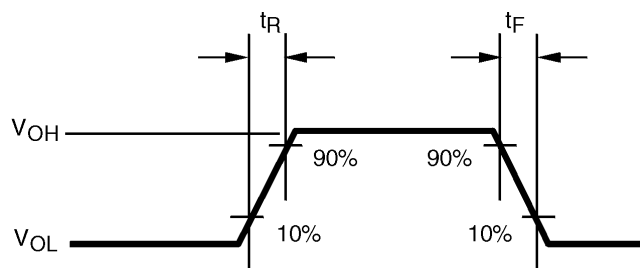


Figure 3. Rise and Fall Times

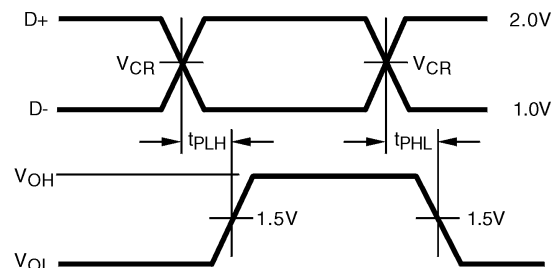


Figure 4.  $V_{PO}$ ,  $V_{MO}/F_{SEO}$  to D+/D-

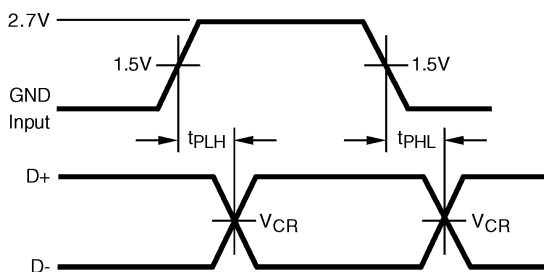


Figure 5. D+/D- to RCV,  $V_P/V_M$

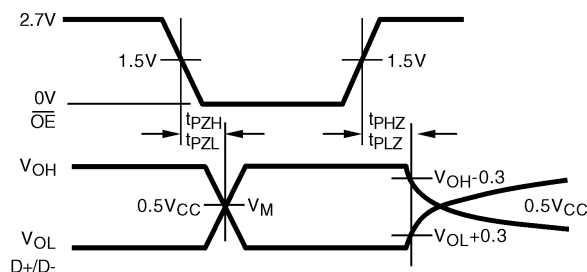


Figure 6. /OE to D+/D-

## Test Circuits and Waveforms

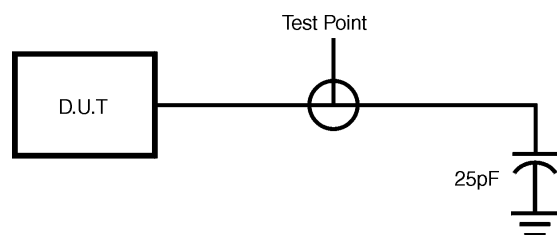


Figure 7. Load for  $V_M/V_P$  and RCV

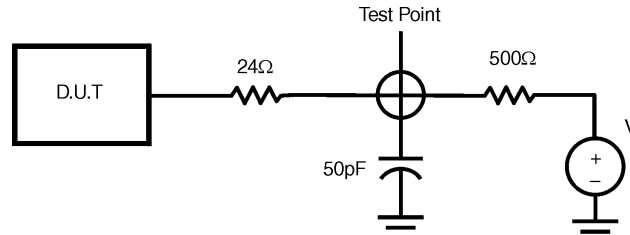
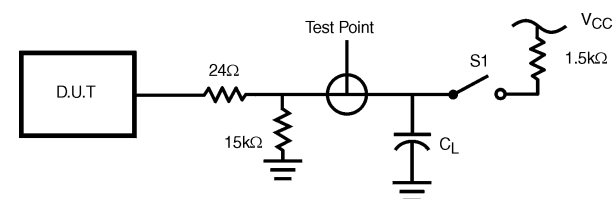


Figure 8. Load for Enable and Disable Times

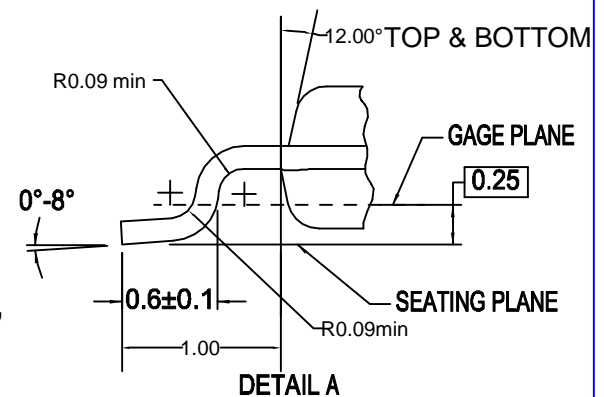
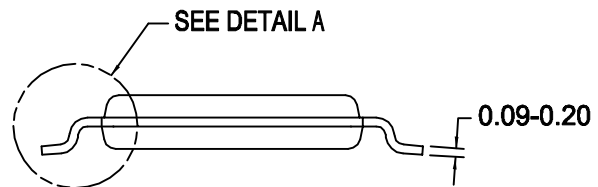
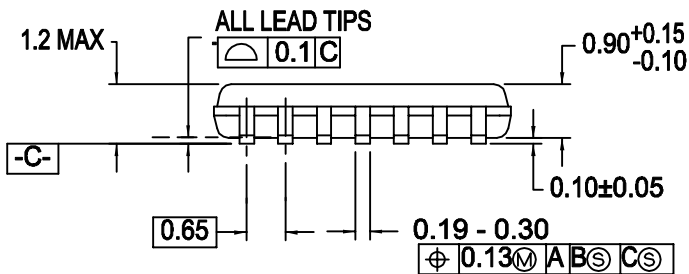
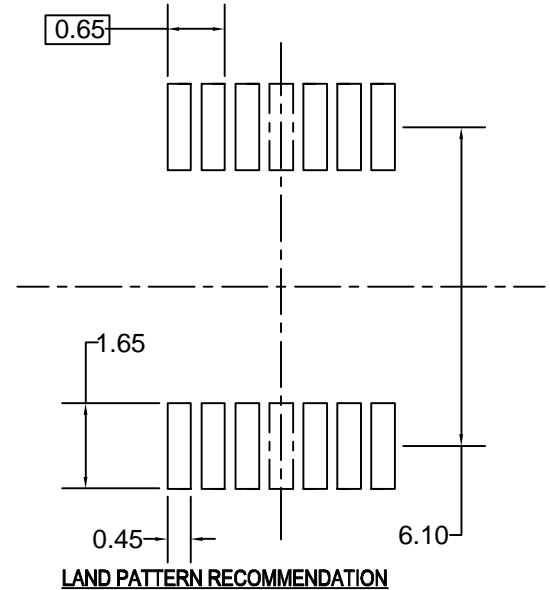
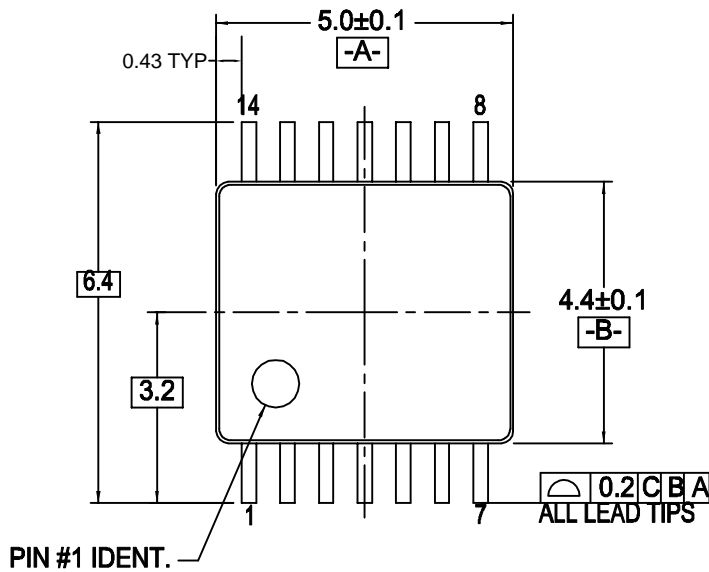


$C_L=50\text{pF}$ , Full Speed  
 $C_L=200\text{pF}$ , Low Speed (Minimum Timing)  
 $C_L=600\text{pF}$ , Low Speed (Maximum Timing)  
 1.5kΩ on D- (Low Speed) or D+ (Full Speed) only

Test	S1
D-/LS	Close
D+/LS	Open
D-/FS	Open
D+/FS	Close

Figure 9. Load for D+/D-

REVISIONS				
LTR	DESCRIPTION	E.C.N.	DATE	BY/APPD
C	REVISE & REDRAW ON PRO/E PER CURRENT STD; CORRECT DET CALLOUT FROM D TO A	11099	08/21/95	MS/
C1	CHANGE TO (FSMP) DRAWING		4-6-98	FEITAN
C2	ADDED NOTES SECTION, ADDED RADIUS DIMS, MOLDED BODY ANGLE DIMS, AND FILENAME		6-12-98	H.ALLEN
C3	CHANGED TITLE, ADDED TITLE		6-23-98	H.ALLEN
D	CHANGED REVISION LEVEL ONLY		11/12/04	H.ALLEN
6	UPDATED LAND PATTERN		9 JULY 07	L.HUEBENER



## NOTES:

- CONFORMS TO JEDEC REGISTRATION MO-153, VARIATION AB, REF NOTE 6
- DIMENSIONS ARE IN MILLIMETERS
- DIMENSIONS ARE EXCLUSIVE OF BURRS, MOLD FLASH, AND TIE BAR EXTRUSIONS
- DIMENSIONING AND TOLERANCES PER ANSI Y14.5M, 1982
- LANDPATTERN STANDARD: SOP65P640X110-14M
- DRAWING FILE NAME: MTC14REV6


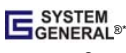



APPROVALS		DATE	FAIRCHILD SEMICONDUCTOR	
DRAWN	L.HUEBENER	9 JULY 07	14LD, TSSOP, JEDEC MO-153, 4.4MM WIDE	
DFTG. CHK.	H.ALLEN	31 JULY 07		
ENGR. CHK.				
PROJECTION			SCALE	SIZE
INCH			N/A	C
MM			DRAWING NUMBER	REV
			MKT-MTC14	6
			DO NOT SCALE DRAWING	SHEET 1 of 1





## TRADEMARKS

The following includes registered and unregistered trademarks and service marks, owned by Fairchild Semiconductor and/or its global subsidiaries, and is not intended to be an exhaustive list of all such trademarks.

AccuPower™	F-PFS™		
Awinda®	FRFET®		
AX-CAP®*	Global Power Resource™	PowerTrench®	TinyBoost®
BitSiC™	GreenBridge™	PowerXS™	TinyBuck®
Build it Now™	Green FPS™	Programmable Active Droop™	TinyCalc™
CorePLUS™	Green FPS™ e-Series™	QFET®	TinyLogic®
CorePOWER™	Gmax™	QS™	TINYOPTO™
CROSSVOL™	GTO™	Quiet Series™	TinyPower™
CTL™	IntelliMAX™	RapidConfigure™	TinyPWM™
Current Transfer Logic™	ISOPLANAR™		TinyWire™
DEUXPEED®	Making Small Speakers Sound Louder and Better™	Saving our world, 1mW/W/kW at a time™	TranSiC™
Dual Cool™	MegaBuck™	SignalWise™	TriFault Detect™
EcoSPARK®	MICROCOUPLER™	SmartMax™	TRUECURRENT®*
EfficientMax™	MicroFET™	SMART START™	μSerDes™
ESBC™	MicroPak™	Solutions for Your Success™	
	MicroPak2™	SPM®	UHC®
Fairchild®	MillerDrive™	STEALTH™	Ultra FRFET™
Fairchild Semiconductor®	MotionMax™	SuperFET®	UniFET™
FACT Quiet Series™	MotionGrid®	SuperSOT™-3	VCX™
FACT®	MTi®	SuperSOT™-6	VisualMax™
FAST®	MTx®	SuperSOT™-8	VoltagePlus™
FastvCore™	MVN®	SupreMOS®	XS™
FETBench™	mWSaver®	SyncFET™	Xsens™
FPS™	OptoHiT™	Sync-Lock™	仙童™

\* Trademarks of System General Corporation, used under license by Fairchild Semiconductor.

## DISCLAIMER

FAIRCHILD SEMICONDUCTOR RESERVES THE RIGHT TO MAKE CHANGES WITHOUT FURTHER NOTICE TO ANY PRODUCTS HEREIN TO IMPROVE RELIABILITY, FUNCTION, OR DESIGN. TO OBTAIN THE LATEST, MOST UP-TO-DATE DATASHEET AND PRODUCT INFORMATION, VISIT OUR WEBSITE AT [HTTP://WWW.FAIRCHILDSEMI.COM](http://www.fairchildsemi.com). FAIRCHILD DOES NOT ASSUME ANY LIABILITY ARISING OUT OF THE APPLICATION OR USE OF ANY PRODUCT OR CIRCUIT DESCRIBED HEREIN; NEITHER DOES IT CONVEY ANY LICENSE UNDER ITS PATENT RIGHTS, NOR THE RIGHTS OF OTHERS. THESE SPECIFICATIONS DO NOT EXPAND THE TERMS OF FAIRCHILD'S WORLDWIDE TERMS AND CONDITIONS, SPECIFICALLY THE WARRANTY THEREIN, WHICH COVERS THESE PRODUCTS.

## LIFE SUPPORT POLICY

FAIRCHILD'S PRODUCTS ARE NOT AUTHORIZED FOR USE AS CRITICAL COMPONENTS IN LIFE SUPPORT DEVICES OR SYSTEMS WITHOUT THE EXPRESS WRITTEN APPROVAL OF FAIRCHILD SEMICONDUCTOR CORPORATION.

As used herein:

1. Life support devices or systems are devices or systems which, (a) are intended for surgical implant into the body or (b) support or sustain life, and (c) whose failure to perform when properly used in accordance with instructions for use provided in the labeling, can be reasonably expected to result in a significant injury of the user.
2. A critical component in any component of a life support, device, or system whose failure to perform can be reasonably expected to cause the failure of the life support device or system, or to affect its safety or effectiveness.

## ANTI-COUNTERFEITING POLICY

Fairchild Semiconductor Corporation's Anti-Counterfeiting Policy. Fairchild's Anti-Counterfeiting Policy is also stated on our external website, [www.fairchildsemi.com](http://www.fairchildsemi.com), under Sales Support.

Counterfeiting of semiconductor parts is a growing problem in the industry. All manufacturers of semiconductor products are experiencing counterfeiting of their parts. Customers who inadvertently purchase counterfeit parts experience many problems such as loss of brand reputation, substandard performance, failed applications, and increased cost of production and manufacturing delays. Fairchild is taking strong measures to protect ourselves and our customers from the proliferation of counterfeit parts. Fairchild strongly encourages customers to purchase Fairchild parts either directly from Fairchild or from Authorized Fairchild Distributors who are listed by country on our web page cited above. Products customers buy either from Fairchild directly or from Authorized Fairchild Distributors are genuine parts, have full traceability, meet Fairchild's quality standards for handling and storage and provide access to Fairchild's full range of up-to-date technical and product information. Fairchild and our Authorized Distributors will stand behind all warranties and will appropriately address any warranty issues that may arise. Fairchild will not provide any warranty coverage or other assistance for parts bought from Unauthorized Sources. Fairchild is committed to combat this global problem and encourage our customers to do their part in stopping this practice by buying direct or from authorized distributors.

## PRODUCT STATUS DEFINITIONS

### Definition of Terms

Datasheet Identification	Product Status	Definition
Advance Information	Formative / In Design	Datasheet contains the design specifications for product development. Specifications may change in any manner without notice.
Preliminary	First Production	Datasheet contains preliminary data; supplementary data will be published at a later date. Fairchild Semiconductor reserves the right to make changes at any time without notice to improve design.
No Identification Needed	Full Production	Datasheet contains final specifications. Fairchild Semiconductor reserves the right to make changes at any time without notice to improve the design.
Obsolete	Not In Production	Datasheet contains specifications on a product that is discontinued by Fairchild Semiconductor. The datasheet is for reference information only.

Rev. I71

# Mouser Electronics

Authorized Distributor

Click to View Pricing, Inventory, Delivery & Lifecycle Information:

[Fairchild Semiconductor:](#)

[USB1T20MTCX](#)