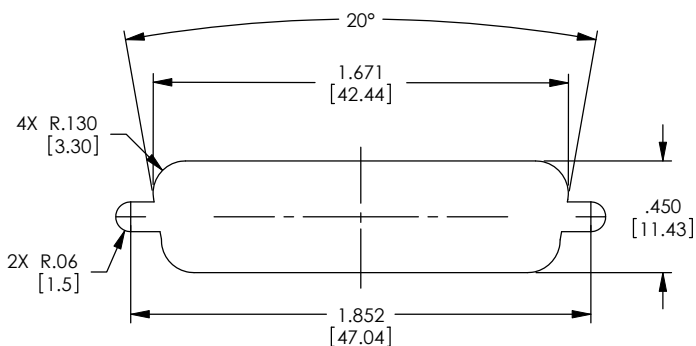


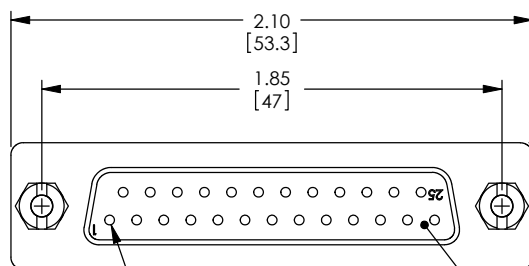
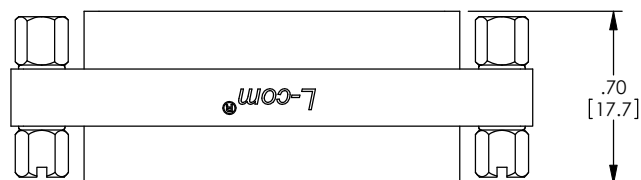
THE INFORMATION CONTAINED IN THIS DRAWING IS THE SOLE PROPERTY OF L-COM, INC. ANY REPRODUCTIONS IN PART OR WHOLE WITHOUT THE WRITTEN PERMISSION OF L-COM, INC. IS PROHIBITED.

REVISIONS			
REV	DESCRIPTION	DATE	CHANGED BY
F	ECN 99999: UPDATED DRAWING AND NEW FORMAT	1/22/10	D. FRISIELLO
G	ECN 5937: ADDED NOTE FOR PANEL MOUNTING	1/23/12	D. FRISIELLO



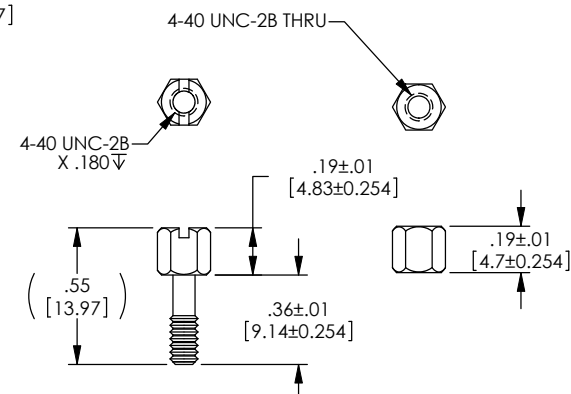
RECOMMENDED PANEL OPENING
(MAX PANEL THICKNESS: 0.06")

**NOTE: DIFFERENT STANDOFFS AND JACK SCREWS
ARE REQUIRED FOR PANEL MOUNTING.
SEE WWW.L-COM.COM OR MASTER CATALOG FOR DETAILS.**



PIN 1

2X FEMALE, 25 PIN
D-SUB CONNECTOR



JACKSCREW & HEX STANDOFF
SPECIFICATION

NOTES:

MATERIAL:
SHELL: STEEL
CONTACTS: COPPER ALLOY
HARDWARE: BRASS
INSULATOR: PBT FIBER REINFORCED (UL94V-0 RATED)

FINISH:

SHELL: TIN/NICKEL PLATED
CONTACTS: GOLD FLASH PLATED, 1-5μ INCHES
HARDWARE: NICKEL PLATED

ELECTRICAL:

CURRENT RATING: 3 AMP
INSULATION RESISTANCE: 1000 MΩ MIN @500 VDC
DIELECTRIC WITHSTANDING VOLTAGE: 1000 VAC (FOR ONE MINUTE)

MISCELLANEOUS:

OPERATING TEMPERATURE RANGE: -55°C TO +105°C.
ALL CONTACTS WIRED STRAIGHT THROUGH.
COMPONENT SHALL BE TESTED FOR CONTINUITY.

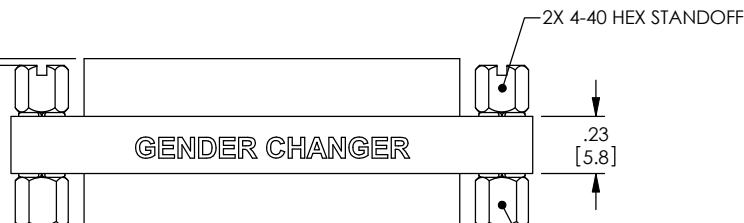
LABELING:

PANTONE 2945 BLUE. "L-COM" FONT MyriadMM ITALIC.
"GENDER CHANGER" FONT ARIAL BOLD, TEXT HEIGHTS; .085"
TEXT COLOR; WHITE.

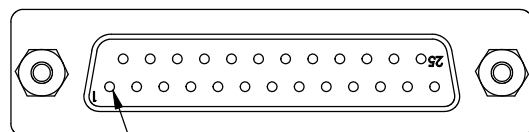
PACKAGING:

COMPONENT SHALL BE INDIVIDUALLY PACKAGED IN
ACCORDANCE WITH L-COM SPECIFICATION PS-0031.

4X .03^{+0.00}_{-.03}
[0.76⁰_{-0.762}]



GENDER CHANGER



PIN 1

RoHS Compliant ✓

UNLESS OTHERWISE SPECIFIED, DIMENSIONS ARE IN INCHES (mm)		APPROVALS	DATE
DIMENSIONAL TOLERANCES: .X = ±.1 .XX = ±.01 .XXX = ±.005		DRAWN BY R. CARWICK	09/28/2000
ANGULAR TOLERANCES: ALL = ± 1°		CHECKED BY T. CLARK	09/28/2000
PROJECTION		APPROVED BY D. PARHAM	09/28/2000
		CONFIGURATION DETAILS OF UNDIMENSIONED FEATURES MAY VARY	
		COLOR VARIATIONS MAY OCCUR	
SIZE	PSCM NO.	DWG. NO.	REV.
B	43321	DGB25F	G
SCALE: 2:1		CAD FILE: DGB25F.SLDDRW	
		SHEET 1 OF 1	

L-com		Global Connectivity	45 BEECHWOOD DRIVE NORTH ANDOVER, MA 01845	
CATEGORY		D-SUBMINIATURE		
PRODUCT DESCRIPTION				
ADPT GNDR CHGR DB25 F/F SLIM				
SIZE	FSJC. NO.	DWG. NO.	REV	
B	43321	DGB25F	G	
SCALE: 2:1		CAD FILE: DGB25F.SIDRAW		SHEET 1 OF 1