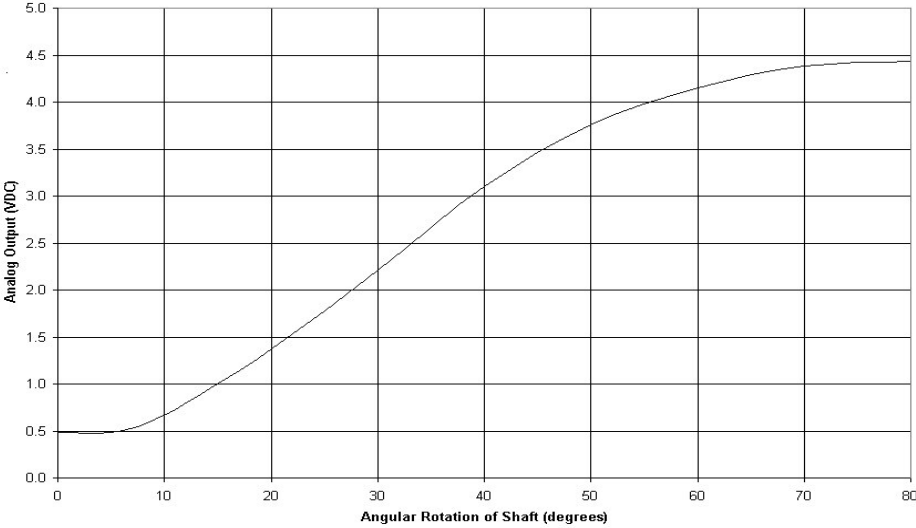
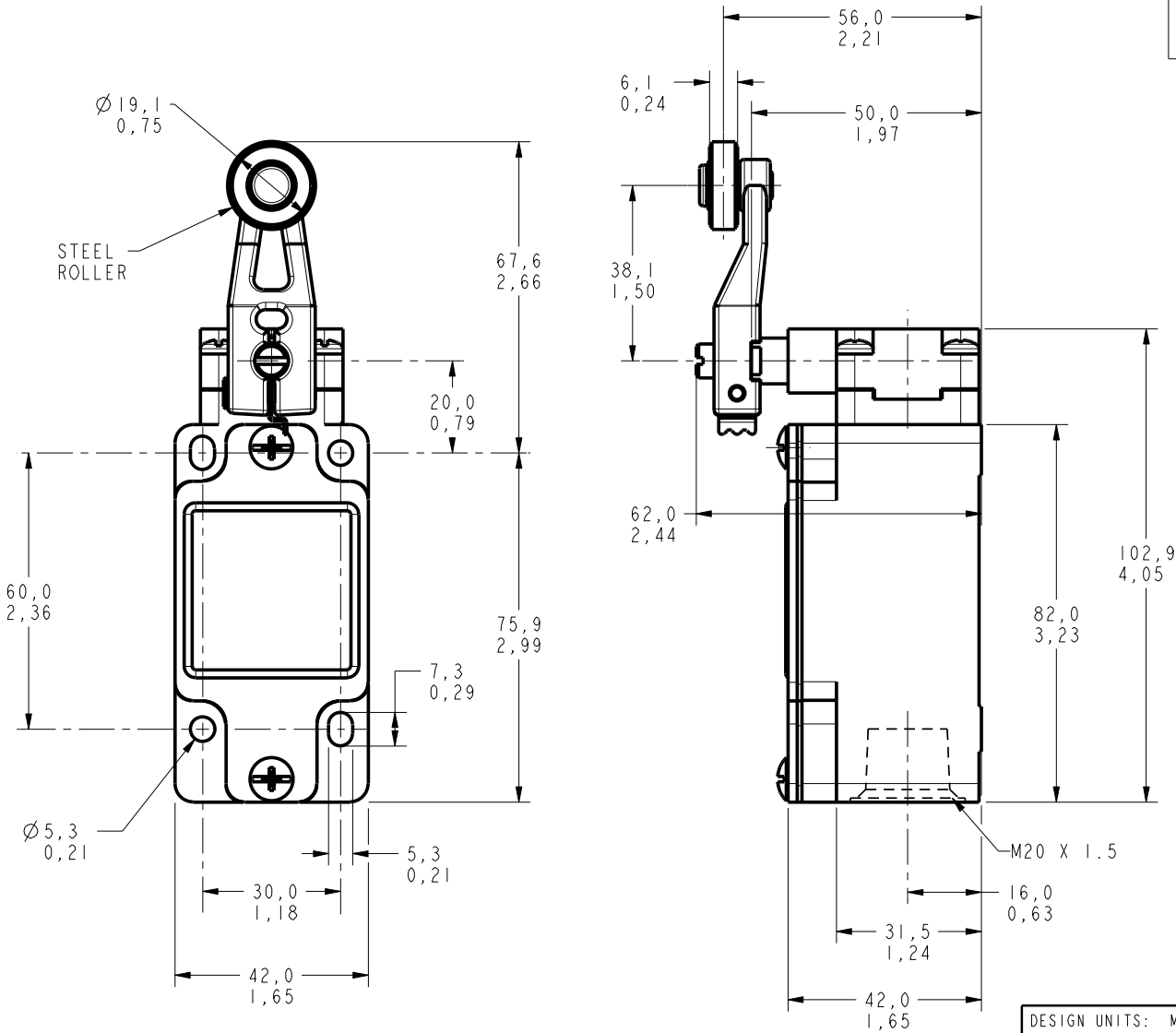


HONEYWELL
PART NUMBER
GLAC18A1B

REV	DOCUMENT	CHANGED BY	CHECK
A	0011070	KR 07FEB05	AK



SPECIFICATIONS	
ELECTRICAL:	
SUPPLY VOLTAGE RANGE:	11-25 VDC
SUPPLY CURRENT	: 15 mA MAX
OUTPUT VOLTAGE	: 0.5VDC TO 4.5VDC
OUTPUT CURRENT	: 1mA MAX. SOURCING
(RECOMMENDED EXTERNAL LOAD IS A 4.7K RESISTOR TO GROUND)	
TEMPERATURE DRIFT	: ±3% FULL SCALE
REPEATABILITY	: ±2% FULL SCALE
LINEARITY	: ±3% (WITHIN THE ANGULAR ROTATION OF 20 TO 40 DEGREES)
ENVIROMENTAL:	
TEMPERATURE:	
OPERATING	: -40° TO 70°C (-40° TO 158°F)
STORAGE	: -40° TO 85°C (-40° TO 185°F)
HUMIDITY	: 95% RH, NON-CONDENSING
SHOCK	: 50 G (IEC 68-2-27)
VIBRATION	: 10G, AT 10 TO 500HZ (IEC 68-2-6)
SEALING	: NEMA 1, 4, 12, 13, IP67



- NOTES:
- 1 - ZINC DIECAST BODY AND HEAD WITH STEEL COVER. BODY, COVER AND HEAD FINISHED IN EPOXY PAINT
 - 2 - SWITCH WIRED WITH 22 AWG
LEADS:
BROWN: POWER (+)
BLUE: GROUND (-)
BLACK: SIGNAL (O)
 - 3 - HEADS MAY BE INDEXED IN 90° INCREMENTS
 - 4 - LEVERS MAY BE KEYED TO THE SHAFT AT 90° INCREMENTS. THEY MAY ALSO BE ATTACHED, BUT NOT KEYED ANYWHERE ON THE SHAFT.
 - 5 - TOTAL TRAVEL: 85° CLOCKWISE AND COUNTERCLOCKWISE
 - 6 - MAX OPERATING TORQUE = .33 Nm / 2.9 IN/LB

DESIGN UNITS: MM TOLERANCES UNLESS NOTED:		DRAWN	KR	07FEB05	Honeywell	
NO PLACE .X ±		CHECK	AK	07FEB05		
ONE PLACE .X ±		THIS DRAWING COVERS A PROPRIETARY ITEM AND IS THE PROPERTY OF HONEYWELL.			TITLE	
TWO PLACE .XX ±		THIS DRAWING IS NOT TO BE COPIED OR USED WITHOUT THE PERMISSION OF HONEYWELL.			SWITCH, ENCLOSED	
THREE PLACE .XXX ±		INTERPRET PER ASME Y14.5M-1994 OTHER HONEYWELL ENGINEERING STANDARDS MAY APPLY			SIZE	TYPE
FOUR PLACE .XXXX ±		Pro/ENGINEER			C	I
ANGLES X ±		3D			DRAWING NAME	REV
THIRD ANGLE PROJECTION		SCALE 1:1			GLAC18A1B	A
		SHEET 1 OF 1				