



Our Focus is in Plastics

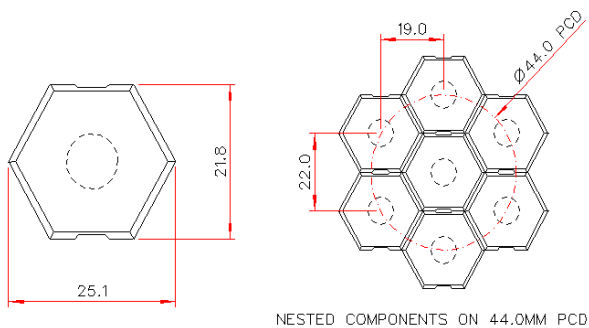
Polymer Optics Ltd.

6 Kiln Ride, Wokingham,
Berks., RG40 3JL, England
Tel/Fax: +44 (0) 1189 893341
www.polymer-optics.co.uk

6 Degree Supa-Hex© LED Lens - Part No. 152

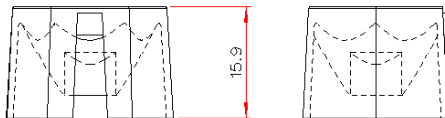


- Designed for LUXEON® I, III and K2 LED's
- High light collection efficiency of >85%
- Suitable for both LUXEON® "Lambertian" and "Bat-wing" LED designs
- New single piece, holder-less design for easier assembly, lower cost and improved luminaire aesthetics.
- Patent applied for hexagonal shape for close packed uniform look of luminaire.
- Designed for standard 22mm pitch to replace existing large format LED collimator products on the market.
- Precision moulded in optical grade Polycarbonate for thermal stability and system durability



NESTED COMPONENTS ON 44.0MM PCD

Typical dimensional tolerances
to +/-0.2mm



Polymer Optics Limited is a certified
Lumileds-Future Partner

POL's unique hexagonal shaped optics close pack in arrays for a uniform illuminated look to the luminaire and superior projected illumination uniformity.

Each optic simply fits over the LED package and self-aligns to the optical axis. No other assembly required.

Due to continuous product improvement, POL reserve the right to change specifications without notice.

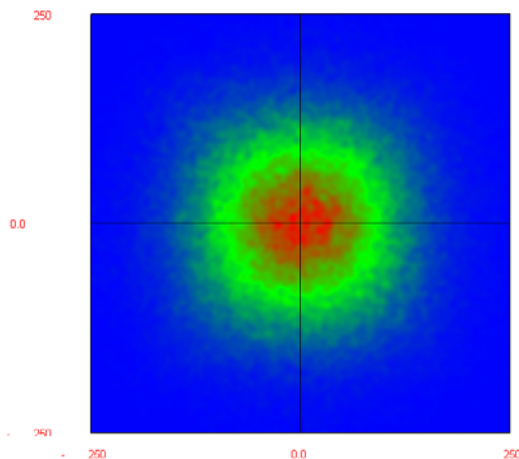


Our Focus is in Plastics

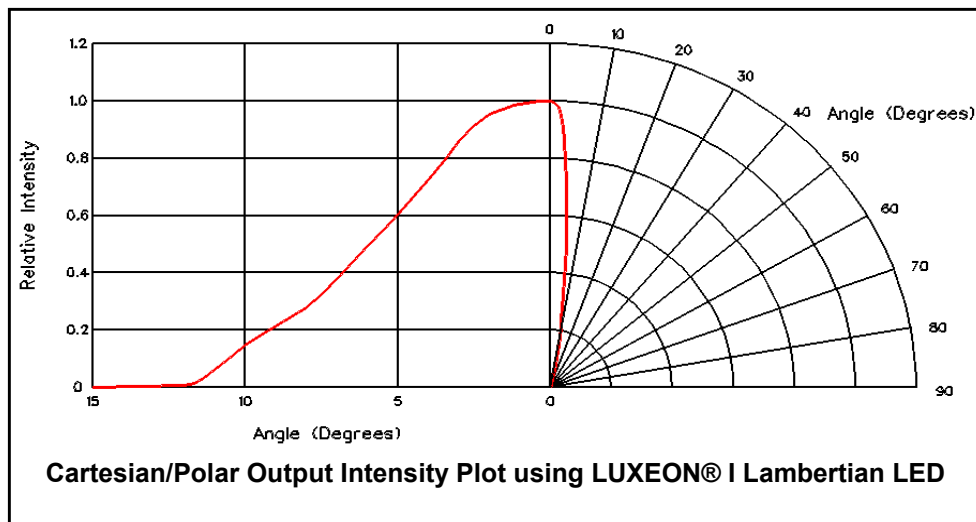
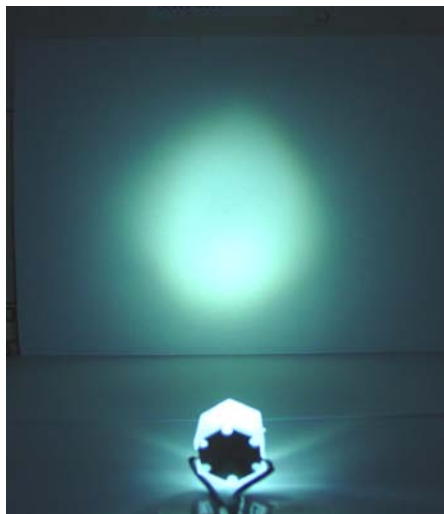
Polymer Optics Ltd.

6 Kiln Ride, Wokingham,
Berks., RG40 3JL, England
Tel/Fax: +44 (0) 1189 893341
www.polymer-optics.co.uk

6 Degree Supa-Hex© LED Lens - Part No. 152



Raytrace Simulation of Typical Beam at
1m with 1W White LED



Typical illuminance values using 40 lumen white LUXEON® I Emitter = 21cd/lumen			
Range	0.5m	1m	2m
Illuminance	3400 lux	850 lux	212 lux

Performance values given are typical values and will vary dependant on LED binning, colour and drive profile



Our Focus is in Plastics

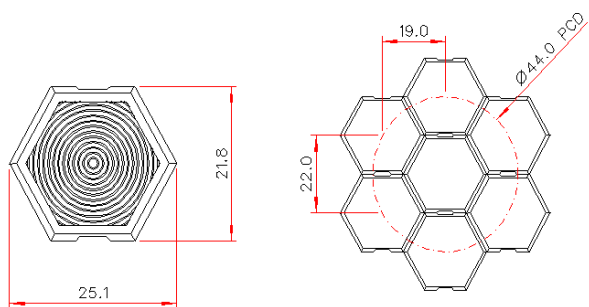
Polymer Optics Ltd.

6 Kiln Ride, Wokingham,
Berks., RG40 3JL, England
Tel/Fax: +44 (0) 1189 893341
www.polymer-optics.co.uk

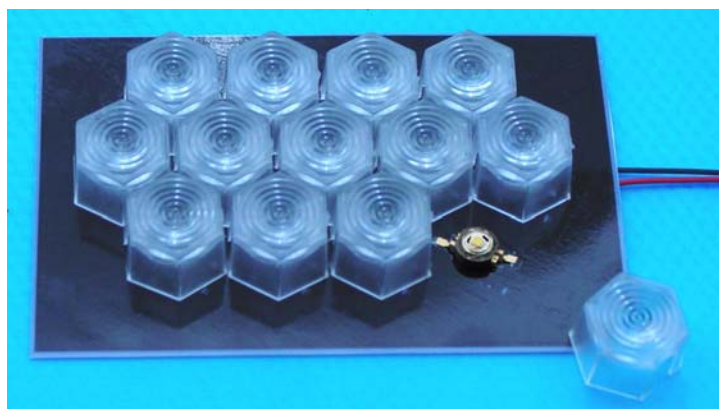
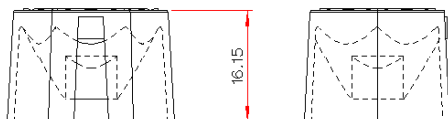
25 Degree Supa-Hex© LED Lens - Part No. 153



- Designed for LUXEON® I, III and K2 LED's
- High light collection efficiency of >85%
- Suitable for both LUXEON® "Lambertian" and "Bat-wing" LED designs
- New single piece, holder-less design for easier assembly, lower cost and improved luminaire aesthetics.
- Patent applied for hexagonal shape for close packed uniform look of luminaire.
- Designed for standard 22mm pitch to replace existing large format LED collimator products on the market.
- Precision moulded in optical grade Polycarbonate for thermal stability and system durability



NESTED COMPONENTS ON 44.0MM PCD
Typical dimensional tolerances
to +/-0.2mm



Polymer Optics Limited is a certified
Lumileds-Future Partner

POL's unique hexagonal shaped optics close pack in arrays for a uniform illuminated look to the luminaire and superior projected illumination uniformity.

Each optic simply fits over the LED package and self-aligns to the optical axis. No other assembly required.

Due to continuous product improvement, POL reserve the right to change specifications without notice.

© Copyright Polymer Optics Limited 2006

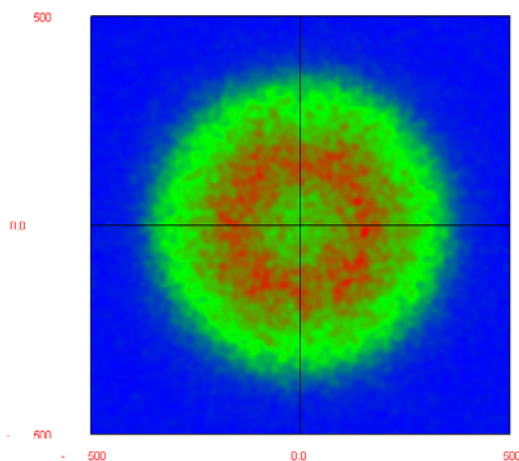


Our Focus is in Plastics

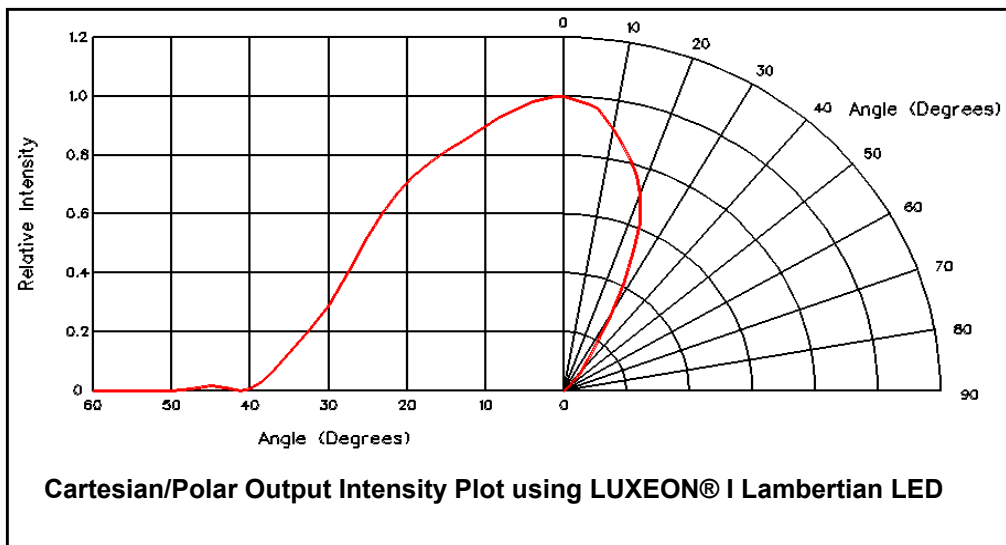
Polymer Optics Ltd.

6 Kiln Ride, Wokingham,
Berks., RG40 3JL, England
Tel/Fax: +44 (0) 1189 893341
www.polymer-optics.co.uk

25 Degree Supa-Hex© LED Lens - Part No. 153



Raytrace Simulation of Typical Beam at
1m with 1W White LED



Typical illuminance values using 40 lumen white LUXEON® I Emitter = 3 cd/lumen			
Range	0.5m	1m	2m
Illuminance	480 lux	120 lux	30 lux

Performance values given are typical values and will vary dependant on LED binning, colour and drive profile



Our Focus is in Plastics

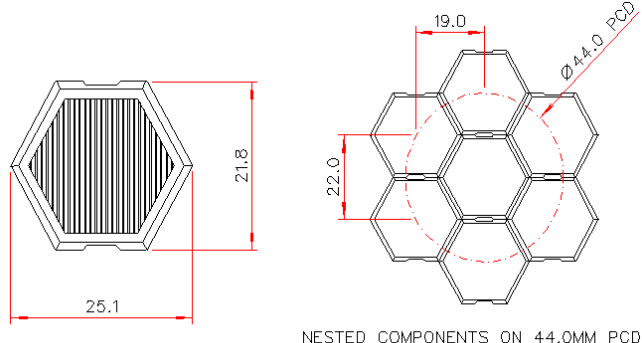
Polymer Optics Ltd.

6 Kiln Ride, Wokingham,
Berks., RG40 3JL, England
Tel/Fax: +44 (0) 1189 893341
www.polymer-optics.co.uk

6x25 Degree Supa-Hex© LED Lens - Part No. 154

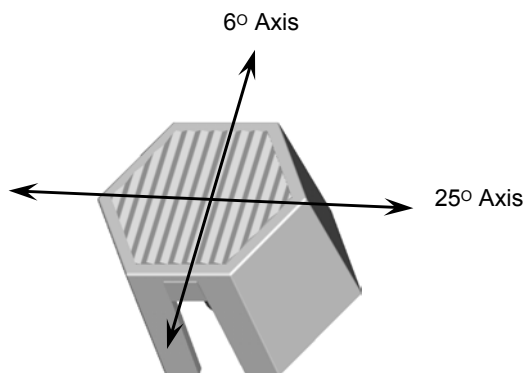


- Designed for LUXEON® I, III and K2 LED's
- High light collection efficiency of >85%
- Suitable for both LUXEON® "Lambertian" and "Bat-wing" LED designs
- New single piece, holder-less design for easier assembly, lower cost and improved luminaire aesthetics.
- Patent applied for hexagonal shape for close packed uniform look of luminaire.
- Designed for standard 22mm pitch to replace existing large format LED collimator products on the market.
- Precision moulded in optical grade Polycarbonate for thermal stability and system durability



NESTED COMPONENTS ON 44.0MM PCD

Typical dimensional tolerances
to +/-0.2mm



Polymer Optics Limited is a certified
Lumileds-Future Partner

POL's unique hexagonal shaped optics close pack in arrays for a uniform illuminated look to the luminaire and superior projected illumination uniformity.

Each optic simply fits over the LED package and self-aligns to the optical axis. No other assembly required.

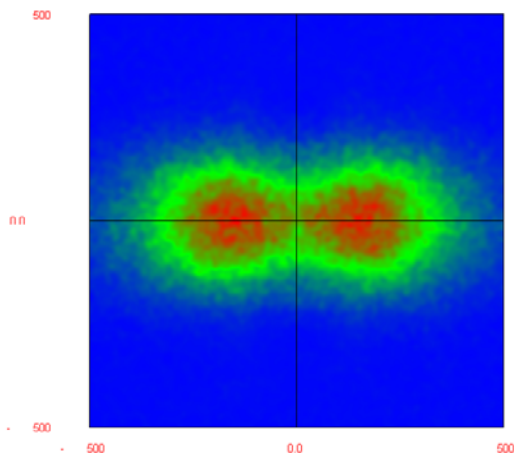


Our Focus is in Plastics

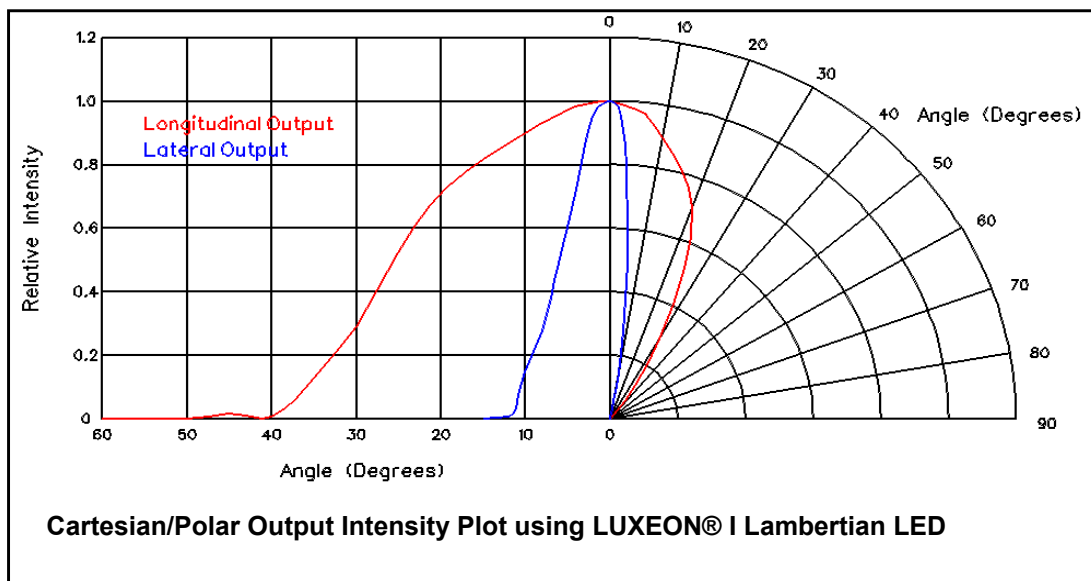
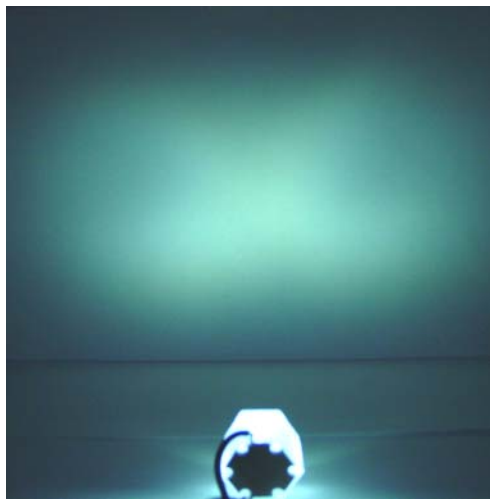
Polymer Optics Ltd.

6 Kiln Ride, Wokingham,
Berks., RG40 3JL, England
Tel/Fax: +44 (0) 1189 893341
www.polymer-optics.co.uk

6x25 Degree Supa-Hex© LED Lens - Part No. 154



Raytrace Simulation of Typical Beam at
1m with 1W White LED



Typical illuminance values using 40 lumen white LUXEON® I Emitter = 5.25 cd/lumen			
Range	0.5m	1m	2m
Illuminance	840 lux	210 lux	53 lux

Performance values given are typical values and will vary dependant on LED binning, colour and drive profile