

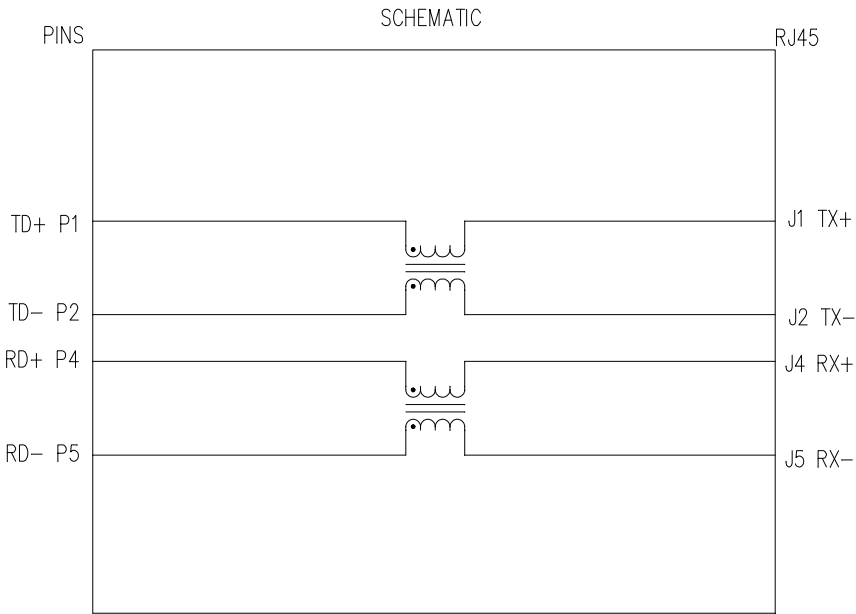
THE INFORMATION CONTAINED HEREIN IS CONSIDERED "PROPRIETARY" TO BEL FUSE INC. AND SHALL NOT BE COPIED, REPRODUCED OR DISCLOSED WITHOUT THE WRITTEN APPROVAL OF BEL FUSE INC.

ELECTRICAL CHARACTERISTICS @ 25°C

INDUCTANCE: P1-J1=P2-J2 ; P4-J4=P5-J5 : 65 uH 0.01V, 10 KHz, nomind.

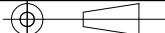
DC RESISTANCE: P1-J1 : .5 ohm MAX
P2-J2 : .5 ohm MAX
P4-J4 : .5 ohm MAX
P5-J5 : .5 ohm MAX

FREQUENCY (MHz)	COMOM MODE: CMA (-dB)	
	TYPICAL	MIN
1	8	5
5	17	15
20	23	15
70	25	20
200	22	17

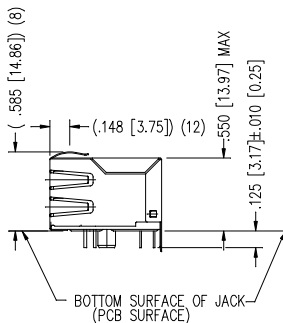
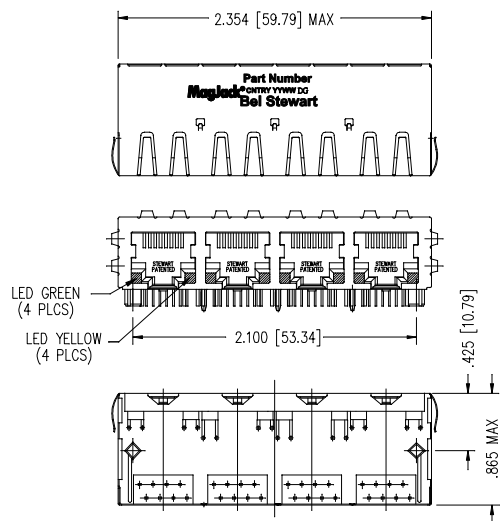
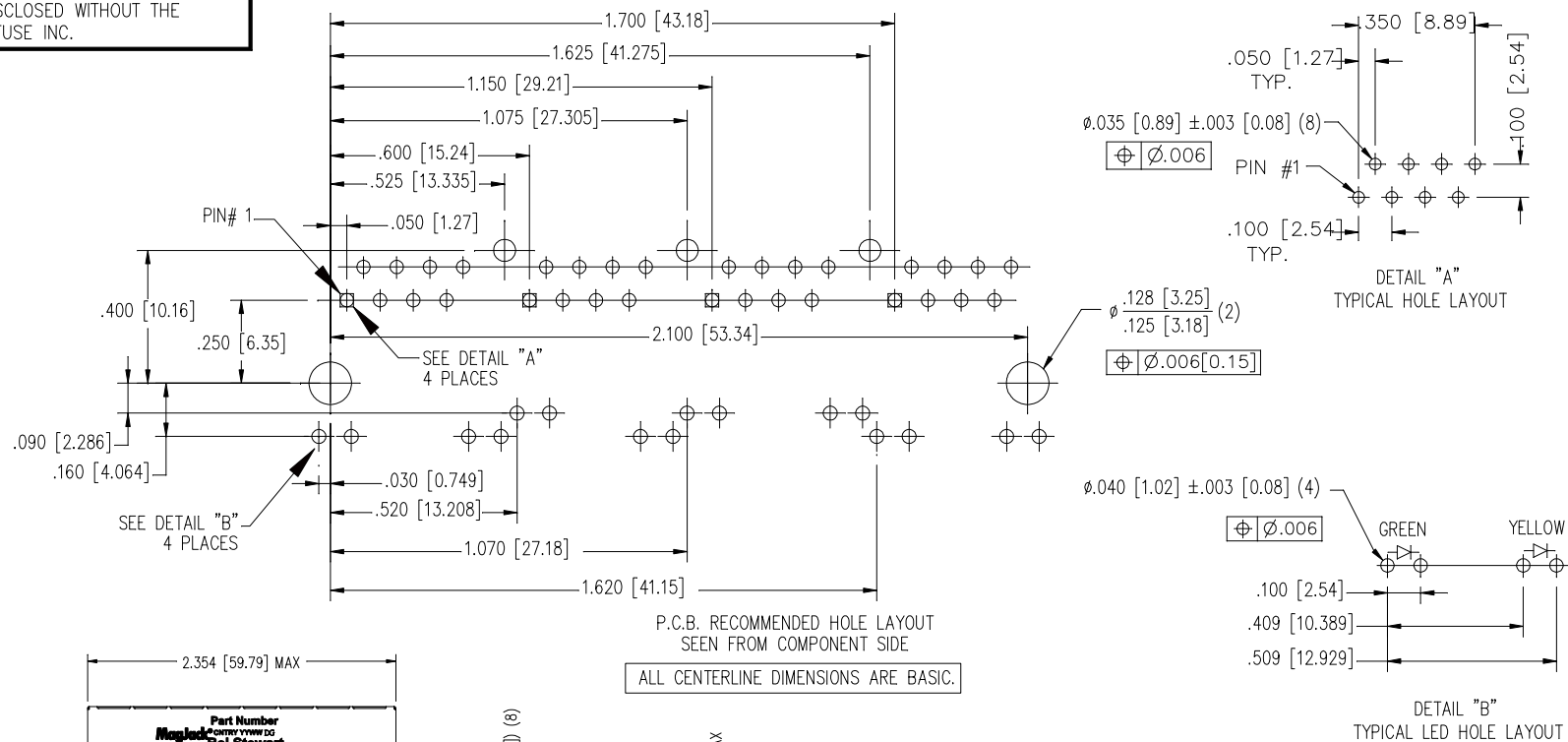


NOTES:

1.0 PINS NOT ELECTRICALLY CONNECTED ARE OMITTED.

ORIGINATED BY	DATE	TITLE <div>MagJack®</div> <div>T1/E1 TAB DOWN, SHIELDED</div>	PART NO. / DRAWING NO.	STANDARD DIM.		[] METRIC DIM. AS REFERENCE		<div>bel</div> <div>COMPONENTS FOR A CONNECTED PLANET</div>
Bain Liu	09-24-08		SI-40017	TOL. IN INCH		UNIT : INCH [mm]	REV. : A0	
DRAWN BY	DATE		FILE NAME	.X		SCALE : N/A	SIZE : A4	
LW Yuan	09-24-08		SI-40017.DWG	.XX			PAGE : 1	
				.XXX	±0.005			

THE INFORMATION CONTAINED HEREIN IS CONSIDERED "PROPRIETARY" TO BEL FUSE INC. AND SHALL NOT BE COPIED, REPRODUCED OR DISCLOSED WITHOUT THE WRITTEN APPROVAL OF BEL FUSE INC.



STANDARD LED	WAVELENGTH	Forward V (MAX)	* (TYP)
YELLOW	590 nm	2.5 V	2.1 V
GREEN	565 nm	2.5 V	2.2 V

* WITH A FORWARD CURRENT OF 20 mA (TYP)

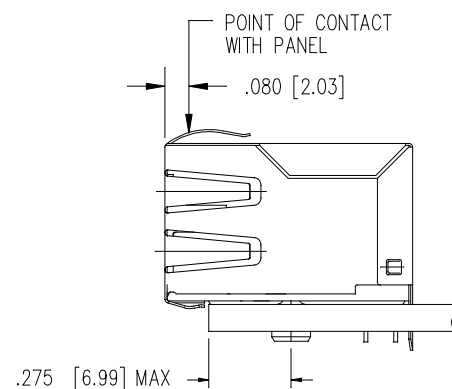
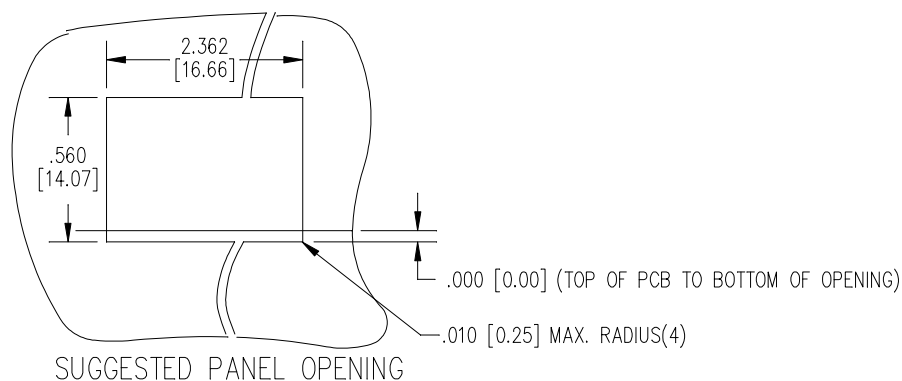
NOTES:

- CONNECTOR MATERIALS:
HOUSING: THERMOPLASTIC UL94 V-0
CONTACT/SHIELD: COPPER ALLOY
SHIELD PLATING: NICKEL OR TIN
CONTACT PLATING: SELECTIVE GOLD,
50 MICRO-INCHES MIN. IN CONTACT AREA.
- PIN NOT ELECTRICALLY CONNECTED MAYBE OMITTED.
SEE ELECTRICAL DRAWING FOR OMITTED PINS.
- TOLERANCES COMPLY WITH F.C.C. DIMENSION REQUIREMENTS.
- ALL TOLERANCES NOT OTHERWISE SPECIFIED TO BE ± 0.005 [0.13]
- REFLOW AND WAVE SOLDER COMPATIBLE -260°C FOR 10 SECONDS MAX.

ORIGINATED BY Bain Liu	DATE 09-24-08	TITLE MagJack® T1/E1 TAB DOWN, SHIELDED	PART NO. / DRAWING NO. SI-40017	STANDARD DIM. TOL. IN INCH .X .XX .XXX ±0.005	[] METRIC DIM. AS REFERENCE	
					UNIT : INCH [mm]	REV. : A0
DRAWN BY LW Yuan	DATE 09-24-08		FILE NAME SI-40017.DWG		SCALE : N/A	SIZE : A4
						PAGE : 2



THE INFORMATION CONTAINED HEREIN IS CONSIDERED "PROPRIETARY" TO BEL FUSE INC. AND SHALL NOT BE COPIED, REPRODUCED OR DISCLOSED WITHOUT THE WRITTEN APPROVAL OF BEL FUSE INC.



1. THE SUGGESTED PANEL OPENING IS INTENDED TO GIVE THE USER THE ABILITY TO HAVE REASONABLE JACK / PANEL CLEARANCES YET MAINTAIN RELIABLE GROUNDING CAPABILITY.
2. ALL TOLERANCES NOT OTHERWISE SPECIFIED TO BE ± 0.005 [0.13]

ORIGINATED BY Bain Liu	DATE 09-24-08	TITLE MagJack® T1/E1 TAB DOWN, SHIELDED	PART NO. / DRAWING NO. SI-40017	STANDARD DIM. TOL. IN INCH	[] METRIC DIM. AS REFERENCE	bel COMPONENTS FOR A CONNECTED PLANET
DRAWN BY LW Yuan	DATE 09-24-08		FILE NAME SI-40017.DWG	.X .XX .XXX	UNIT : INCH [mm] SCALE : N/A PAGE : 3	