

## TK-type Twin Wheel Caster

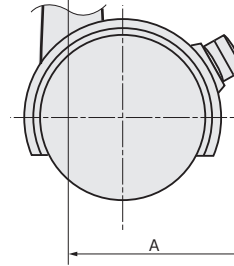


### Characteristic

Caster with cover, drivability, stability, and smooth turning are excellent.

### Application

Lighter devices / TV tables



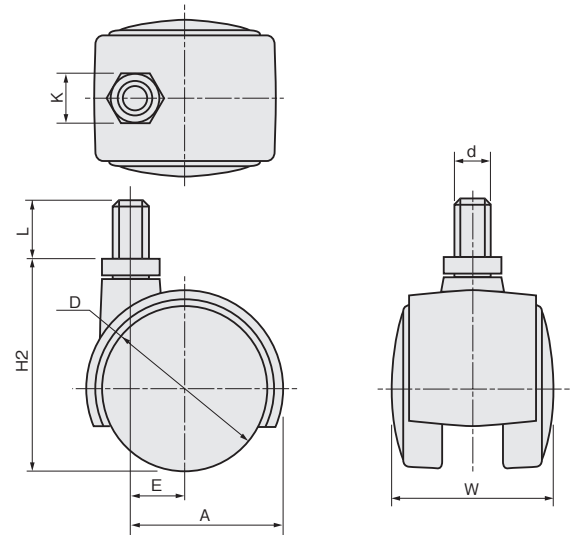
caster with stopper  
(applicable for  
both truck and bolt types)

### Bolt Type Specification

Model No.	A	D	E	d	H2	K	L	W	Allowable Load (kg)	Code No.
TK30N6	29	φ30	11	M6×1.0	39	10	14	33	20	19034
TK40N8	39.5	φ42	14	M8×1.25	55	14	15	39	30	19037
TK40N8S	47			M10×1.5						19050
TK40N10	39.5									19038
TK40N10S	47			W5/16x-18						19051
TK40N2.5	39.5									19039
TK40N2.5S	47									19052
TK40N3	39.5			W3/8x-16						19040
TK40N3S	47									19053
TK50N8	51.5			φ52						21
TK50N8S	59	M10×1.5	19055							
TK50N10	51.5		19043							
TK50N10S	59	M12×1.25	19056							
TK50N12	51.5		W5/16x-18		19044					
TK50N12S	59				19057					
TK50N2.5	51.5	19045								
TK50N2.5S	59	19058								
TK50N3	51.5	W3/8x-16	14		19046					
TK50N3S	59				19059					

※N shows the screw type on the model No. Caster with stopper has S at the end of the model No.

### Bolt type

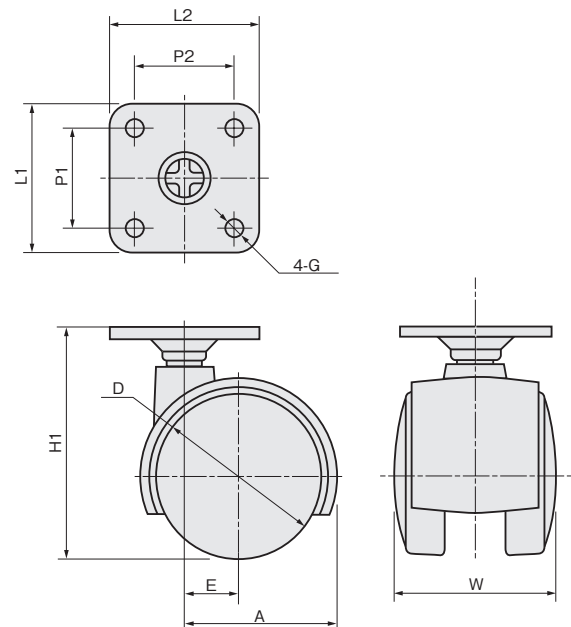


### Truck Type Specification

Model No.	A	D	E	G	H1	L1	L2	P1	P2	W	Allowable Load (kg)	Code No.		
TK30	29	φ30	11	φ5	42.5	28	28	18	18	33	20	19031		
TK40	39.5	φ42	14		58.5	38	38	26	26	40.5	30	19032		
TK40S	47				68.5					47	40	19047		
TK50	52.5	φ52	21									19033		
TK50S	59						19048							

※Caster with stopper has S at the end of the model No.

### Truck type



Model No.	Material	
	Body	Wheel
TK-Type	PA	PA