

PL00777

## WIRELESS REMOTE CONTROL MAINS MODULE

*"Give your home the remote touch!"*

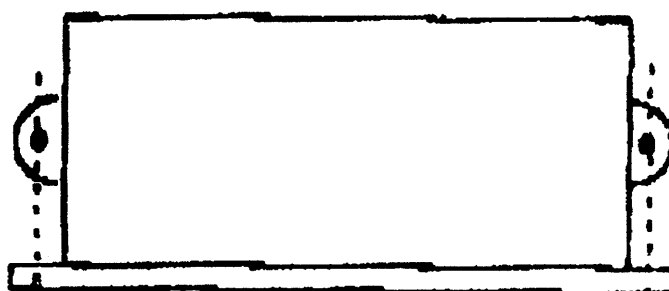
### PRIOR TO OPERATION

- Before the remote control will operate you must remove the plastic tab protruding from the rear cover. Battery is pre-fitted.
- No internal setting up is required.
- It is capable of switching 240 volts AC up to 5 amps via a single pole relay. Designers must refer to relay markings.

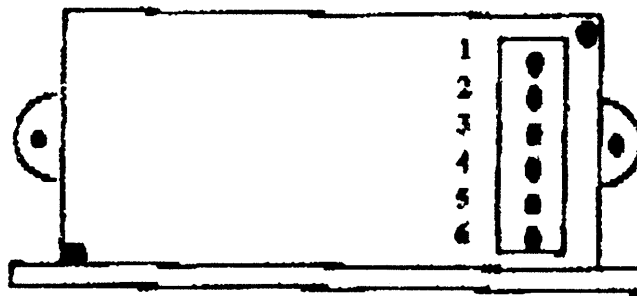
### FEATURES

- Radio remote control operates through walls and ceilings up to 25 meters.
- Operates from any mains product up to 5 amps max.
- No setting up required
- Factory pre-set site code
- 16 bit transmission code.
- Emissions compliant with EN55022:1996
- Immunity compliance with IEC 802-1 & EN50082-1
- DTI licence exempt. Certified to MPT1340

### Remote Switching Module

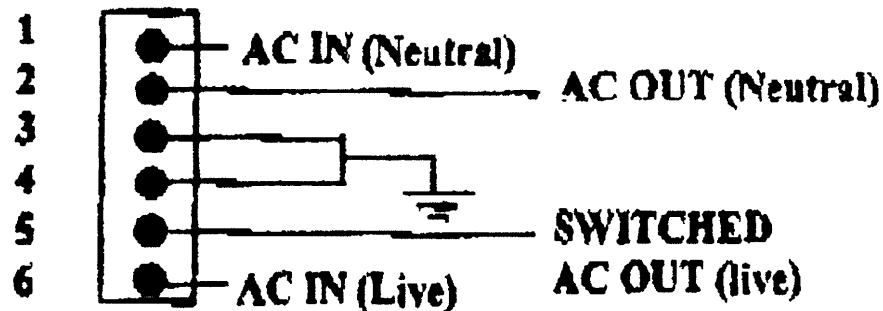


Top View



Bottom view

## CONNECTIONS



## WARNING

Operation with the cover removed can result in electric shock. Installation must be undertaken by qualified electricians only. No user serviceable parts inside. Operation of 2 or more units within a 50cm area may result in greatly reduced range. This product must be mounted within a suitable housing. It is the responsibility of the designer to ensure that all safety issues are adhered to in regards to compliance with the Low Voltage Directive. This product does not provide voltage free contacts.

# AEI Security

UNIT D SHERWOOD IND. PARK ICKLESHAM EAST SUSSEX TN36 4BA

HELPLINE 01424 814555

Models

RM-001-418

