

32AT500

A
ISSUE

REVISIONS

RASTER

PAGE 1 OF 1

REPLACES

01219

RELEASE

CHECK

CHECK

26 AUG 03

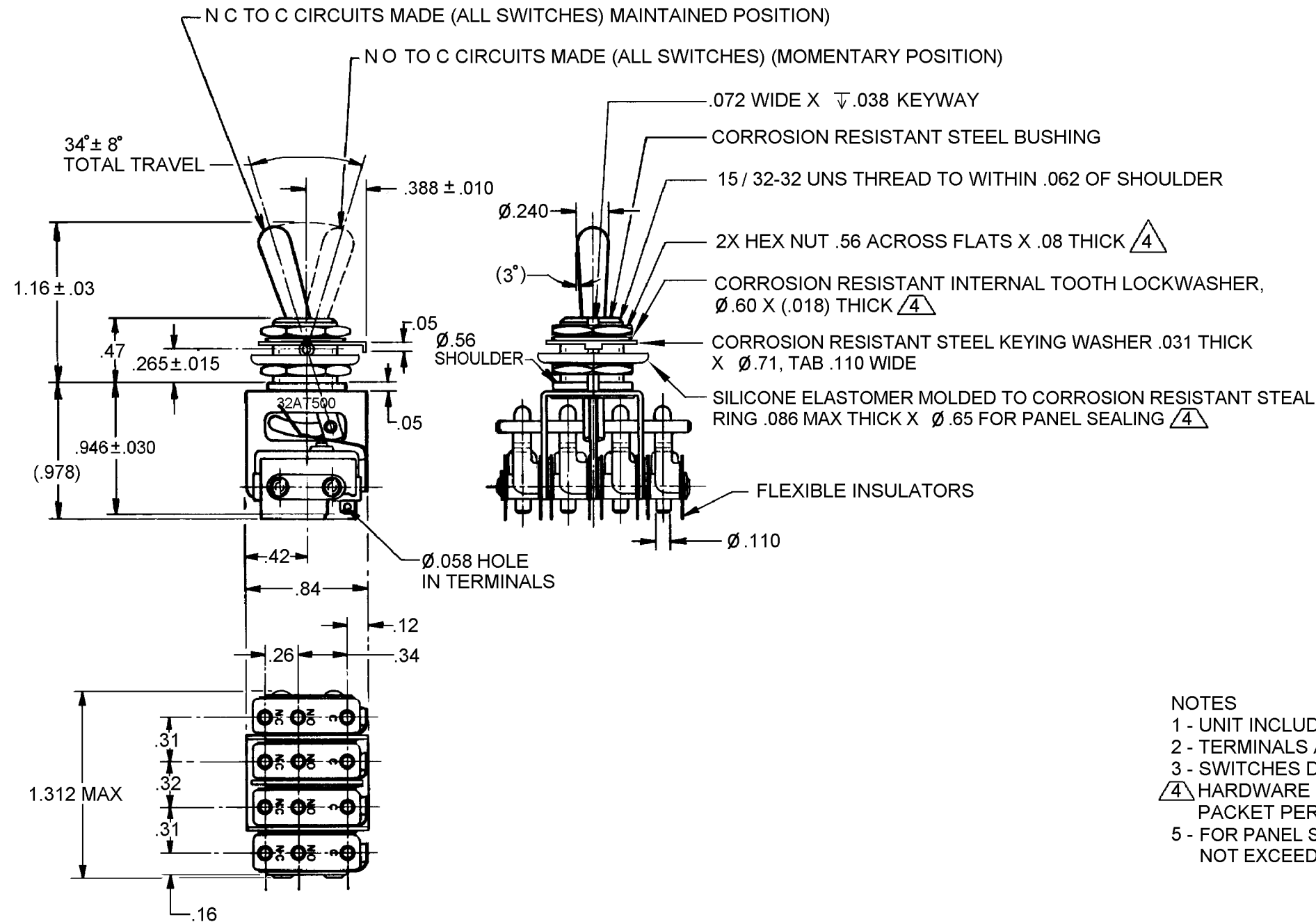
SAV

CHECK

03

26 A

75

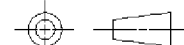


NOTES

- 1 - UNIT INCLUDES 4X CATALOG LISTING 11SM23 BASIC SWITCH
- 2 - TERMINALS ARE PLATED FOR SOLDERING
- 3 - SWITCHES DO NOT NECESSARILY OPERATE SIMULTANEOUSLY
- 4 - HARDWARE FURNISHED ASSEMBLED WITH SWITCH OR IN PACKET PER MIL-PRF-8805
- 5 - FOR PANEL SEAL TO BE EFFECTIVE MOUNTING HOLE IN PANEL SHOULD NOT EXCEED .500 DIAMETER

THIS DRAWING COVERS A PROPRIETARY ITEM AND IS THE PROPERTY OF MICRO SWITCH, A DIVISION OF HONEYWELL. THIS DRAWING IS NOT TO BE COPIED OR USED WITHOUT THE APPROVAL OF MICRO SWITCH

THIRD ANGLE PROJECTION



CHARACTERISTICS

ELECTRICAL DATA

CONTACT ARRANGEMENT
4XSPDT

30 VOLTS DC RATING
INDUCTIVE — — — — SEA LEVEL — — — — 1/2 AMP
50,000 FT — — — — 1/2 AMP

RESISTIVE — — — — SEA LEVEL — — — — 1 AMP
50,000 FT — — — — 1 AMP

MAXIMUM INRUSH ————— 2 AMP

SCALE	FULL
-------	------

DO NOT SCALE PRINT

UNLESS OTHERWISE SPECIFIED
TOLERANCES ARE

ONE PLACE (.0) $\pm .030$

TWO PLACE (.00) $\pm .015$

THREE PLACE (.000) $\pm .005$

THREE PLAGE	(.000)	±
ANGLES		±

WEIGHT

ANSI Y14.5M-1982 APPLIES

Mouser Electronics

Authorized Distributor

Click to View Pricing, Inventory, Delivery & Lifecycle Information:

[Honeywell:](#)

[32AT500](#)