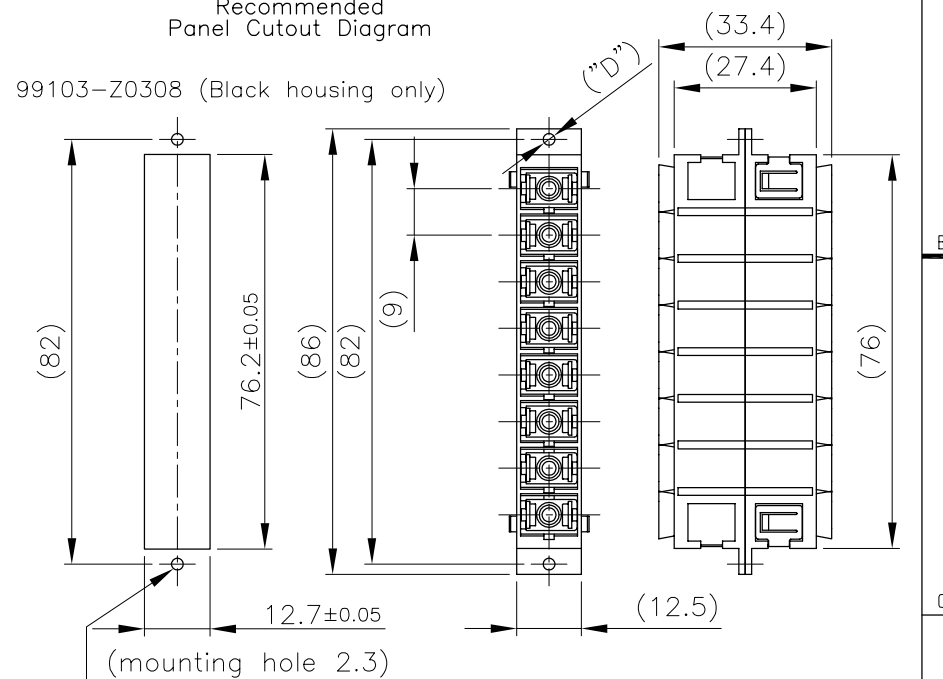
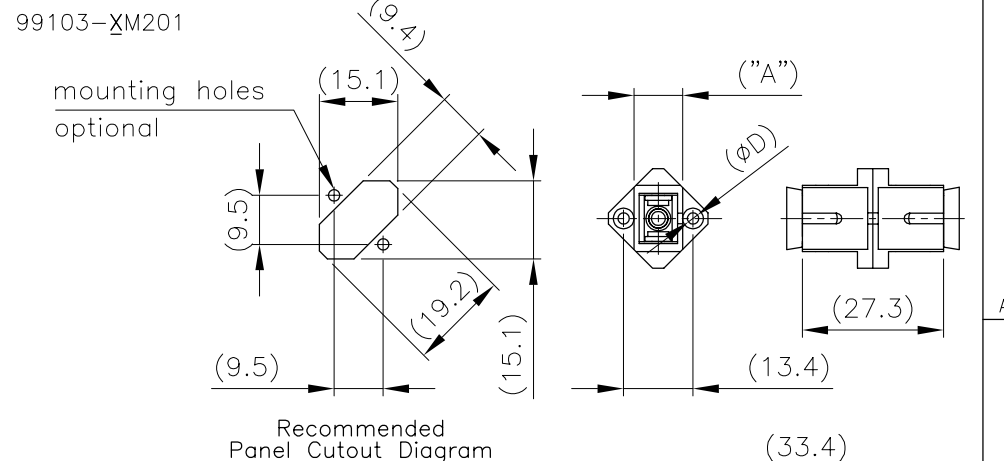
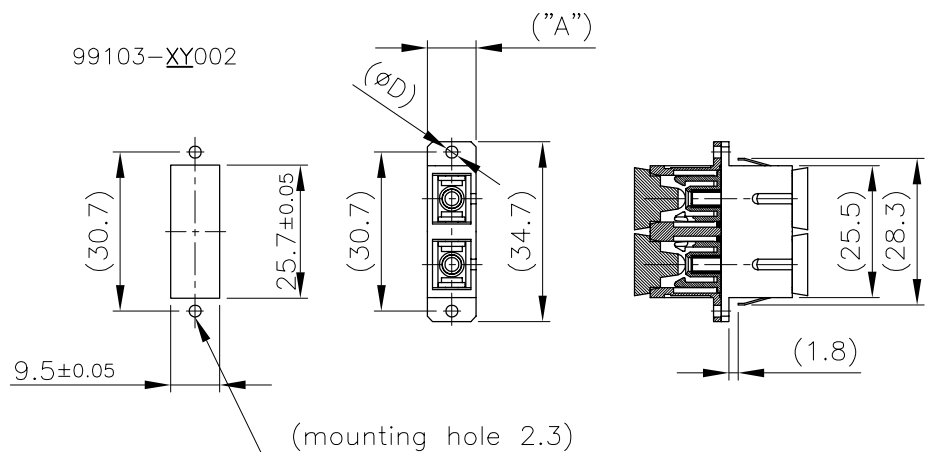
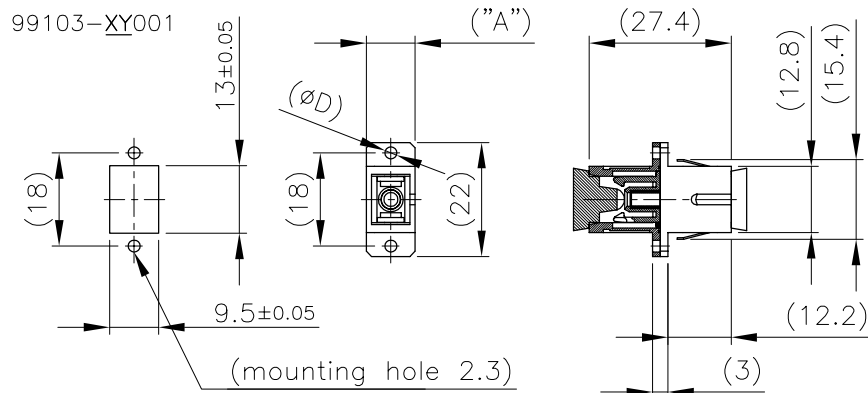





| 99103-XYTNN |   |   |    | DESCRIPTION   | ØD   | "A" |
|-------------|---|---|----|---|------|-----|
| X           |   |   |    | Sleeve type   |      |     |
| P           |   |   |    | Phosphor Bronze   |      |     |
| Z           |   |   |    | Zirconia  |      |     |
|             | Y |   |    | Housing type  |      |     |
|             | 0 |   |    | polymer blue (for 8-way always black)                   | Ø2.3 | 9.4 |
|             | 1 |   |    | polymer beige   | Ø2.3 | 9.4 |
|             | 2 |   |    | polymer black   | Ø2.3 | 9.4 |
|             | A |   |    | polymer green   | Ø2.3 | 9.4 |
|             | M |   |    | Metal housing (simplex / duplex only)                   | Ø2.2 | 9.2 |
|             |   | T |    | Mounting type   |      |     |
|             |   | 0 |    | Rectangular flange with mounting clips                  |      |     |
|             |   | 2 |    | Square flange 45° rotated housing (metal only) no clips |      |     |
|             |   | 3 |    | Rectangular flange, No mounting clips - 8-way           |      |     |
|             |   |   | NN | Nr of ferrules  |      |     |
|             |   |   | 01 | Simplex   |      |     |
|             |   |   | 02 | Duplex  |      |     |
|             |   |   | 08 | 8 position (Black only; polymer housing only)           |      |     |



|             |                |     |        |                                       |               |        |       |   |            |  |  |
|-------------|----------------|-----|--------|---------------------------------------|---------------|--------|-------|---|------------|--|--|
| mat'l. code |                |     |        | tolerances unless otherwise specified |               |        |       | CUSTOMER COPY   |            |  <b>ELECTRONICS</b><br>www.fciconnect.com |  |
| —           |                |     |        |                                       |               |        |       | COPY  |            |  |  |
| ltr         | ecn no         | dr  | date   | linear                                |               |        |       | projection  |            | title<br>SC Adapter<br>with dust cap   |  |
| A           | H10178         | LLA | 010412 |                                       |               |        |       |  |            |  |  |
| B           | H10322         | VAL | 010824 |                                       |               |        |       |   |            |  |  |
| C           | H10419         | VAL | 011210 | angles                                |               |        |       |  |            | product family   Fiber Optics   code<br>size   dwg no   213  |  |
| D           | H30009         | LLA | 030401 | dr                                    | L. Lange      | 010412 |       |   |            |  |  |
| E           | H30046         | LLA | 030924 | engr                                  | J. V. Koetsem | 010412 |       |   |            |  |  |
|             |                |     |        | chr                                   | J. V. Koetsem | 010412 | scale |   | A3   99103 |  |  |
|             |                |     |        | appd                                  | J. V. Koetsem | 010412 | 1:1   |   |            |  |  |
| sheet index | revision sheet | E   | 1      |                                       |               |        |       |   |            |  |  |