

# MUX8561 16-Channel Analog Multiplexer Module +5V, Radiation Tolerant Kelvin Measurement Configured

[www.aeroflex.com/mux](http://www.aeroflex.com/mux)

December 7, 2009



## FEATURES

- ❑ 16 Kelvin measurement channels provided by two 16-channel multiplexers
- ❑ Single +5V power supply
- ❑ Radiation performance
  - Total dose: 150 krad(Si), Dose rate = 50 - 300 rad(Si)/s
  - SEU: Immune up to 90 MeV-cm<sup>2</sup>/mg
  - SEL: Immune by process design
- ❑ Full military temperature range
- ❑ Low power consumption < 5mW
- ❑ CMOS analog switching allows rail to rail operation and low switch impedance
- ❑ One address bus (A0-3), and one enable line
- ❑ Fast access time < 500ns typical
- ❑ Break-Before-Make switching
- ❑ High analog input impedance (power on or off )
- ❑ Designed for aerospace and high reliability space applications
- ❑ Packaging – Hermetic ceramic
  - 56 leads, 0.80"Sq x 0.20"Ht quad flat pack
  - Typical Weight 6 grams
- ❑ DSCC SMD 5962-10210 pending

*Note: Aeroflex Plainview does not currently have a DSCC certified Radiation Hardened Assurance Program.*

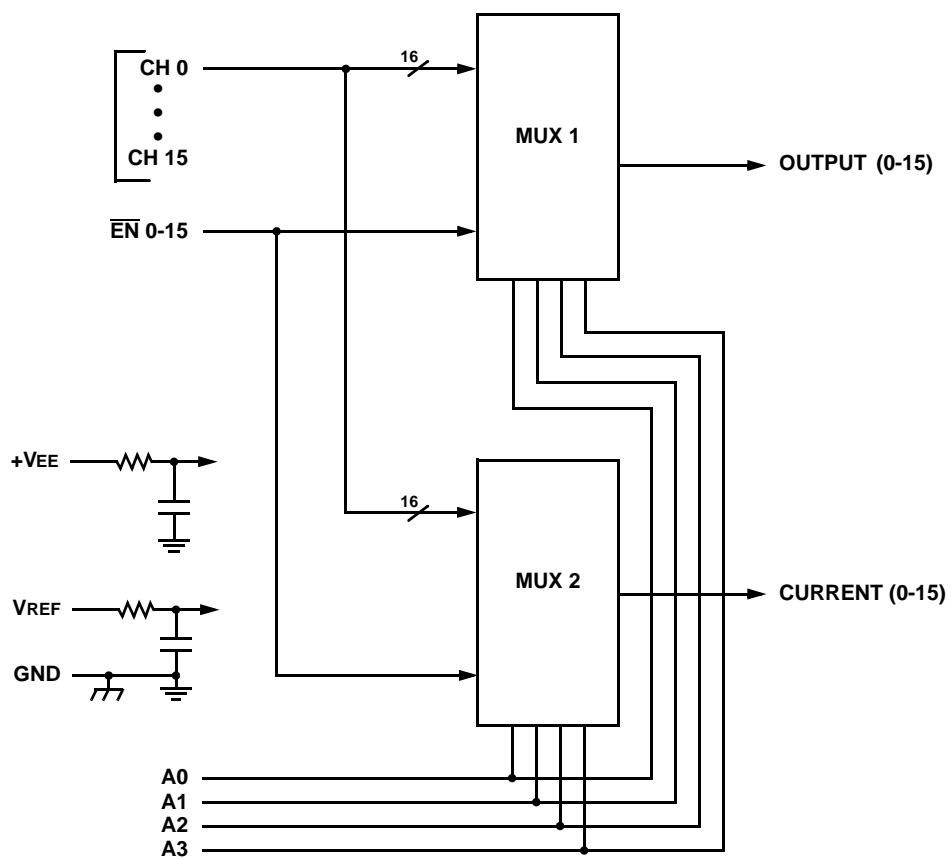
## GENERAL DESCRIPTION

Aeroflex's MUX8561 is a radiation tolerant +5V only 16 Kelvin measurement channel multiplexer MCM (Multi Chip Module).

The MUX8561 has been specifically designed to meet exposure to radiation environments. It is available in a 56 lead High Temperature Co-Fired Ceramic (HTCC) Quad Flatpack (CQFP). It is guaranteed operational from -55°C to +125°C. Available screened in accordance with MIL-PRF-38534, the MUX8561 is ideal for demanding military and space applications.

## ORGANIZATION AND APPLICATION

The MUX8561 consists of two 16 channel +5V only multiplexers arranged as shown in the block diagram, addressable by bus A<sub>0</sub>~A<sub>3</sub> including enable which connects the addressed channel to two separate outputs, "Output" and "Current". This technique enables selecting and reading a remote resistive sensor without the MUX resistance being part of the measurement. For grounded sensors, this is done by passing current to the sensor by means of the "Current" pin and reading the resultant voltage (proportional to the sensor resistance) at the "Output" pin.



**MUX8561: 16 CHANNEL ANALOG MUX BLOCK DIAGRAM  
KELVIN MEASUREMENT CONFIGURED**

## ABSOLUTE MAXIMUM RATINGS <sup>1/</sup>

Parameter	Range	Units
Case Operating Temperature Range	-55 to +125	°C
Storage Temperature Range	-65 to +150	°C
Supply Voltage +V <sub>EE</sub> (Pin 18) V <sub>REF</sub> (Pin 39)	+7.5 +7.5	V V
Digital Input Overvoltage V <sub>EN</sub> (Pin 13), V <sub>A</sub> (Pins 14, 15, 16, 17)	< V <sub>REF</sub> +0.5 > GND -0.5	V V
Analog Input Over Voltage V <sub>S</sub>	-0.5 ≤ V <sub>S</sub> ≤ +7.5	V

Notes:

<sup>1/</sup> All measurements are made with respect to ground.

NOTICE: Stresses above those listed under "Absolute Maximums Rating" may cause permanent damage to the device. These are stress rating only; functional operation beyond the "Operation Conditions" is not recommended and extended exposure beyond the "Operation Conditions" may affect device reliability.

## RECOMMENDED OPERATING CONDITIONS <sup>1/</sup>

Symbol	Parameter	Typical	Units
+V <sub>EE</sub>	+5V Power Supply Voltage	+5.0	V
V <sub>REF</sub>	Reference Voltage	+5.00	V
V <sub>AL</sub>	Logic Low Level	+0.8	V
V <sub>AH</sub>	Logic High Level	+4.0	V

<sup>1/</sup> Power Supply turn-on sequence shall be as follows: +V<sub>EE</sub>, followed by V<sub>REF</sub> (or tie these together).

## DC ELECTRICAL PERFORMANCE CHARACTERISTICS <sup>1/</sup>

(T<sub>C</sub> = -55°C to +125°C, +V<sub>EE</sub> = +5V, V<sub>REF</sub> = +5.0V - Unless otherwise specified)

Parameter	Symbol	Conditions	Min	Max	Units
Supply Current	+I <sub>EE</sub>	V <sub>EN</sub> (0-15) = V <sub>A</sub> (0-3) = 0	0	1	mA
	+I <sub>SBY</sub>	V <sub>EN</sub> (0-15) = 4V, V <sub>A</sub> (0-3) = 0 <sup>2/</sup>	0	1	mA
Address Input Current	I <sub>AL</sub> (0-3)A	V <sub>A</sub> = 0V	-1	1	μA
	I <sub>AH</sub> (0-3)A	V <sub>A</sub> = 5V	-1	1	μA
Enable Input Current	I <sub>ENL</sub> (0-15)	V <sub>EN</sub> (0-15) = 0V	-1	1	μA
	I <sub>ENH</sub> (0-15)	V <sub>EN</sub> (0-15) = 5V	-1	1	μA
Positive Input Leakage Current CH0-CH15	+ISOFFOUTPUT(ALL)	V <sub>IN</sub> = +5V, V <sub>EN</sub> = 4V, Outputs and all unused MUX inputs under test = 0V <sup>2/</sup> , <sup>3/</sup>	-200	+200	nA
Negative Input Leakage Current CH0-CH15	-ISOFFOUTPUT(ALL)	V <sub>IN</sub> = 0V, V <sub>EN</sub> = 4V, Outputs and all unused MUX inputs under test = +5V <sup>2/</sup> , <sup>3/</sup>	-200	+200	nA
Positive Output Leakage Current OUTPUTS (pins 12,45)	+IDOFFOUTPUT(ALL)	V <sub>OUT</sub> = +5V, V <sub>EN</sub> = 4V, All inputs grounded except channel being tested <sup>3/</sup> , <sup>4/</sup>	-50	+1500	nA

## DC ELECTRICAL PERFORMANCE CHARACTERISTICS 1/ (continued)

(TC = -55°C to +125°C, +VEE = +5V, VREF = +5.0V - Unless otherwise specified)

Parameter	Symbol	Conditions	Min	Max	Units
Switch ON Resistance OUTPUTS (pins 12,45) 6/	$R_{DS(ON)}(0-15)_A$	$V_{IN} = +5V$ , $V_{EN} = 0.8V$ , $I_{OUT} = -1mA$ 2/, 3/, 5/	50	1000	$\Omega$

Notes:

- 1/ Measure inputs sequentially. Ground all unused inputs of the device under test.  $V_A$  is the applied input voltage to the address lines A(0-3).
- 2/  $V_{IN}$  is the applied input voltage to the input channels CH0-CH15.
- 3/  $V_{EN}$  is the applied input voltage to the enable line EN (0-15).
- 4/  $V_{OUT}$  is the applied input voltage to the output lines OUTPUT (0-15), CURRENT (0-15)
- 5/ Negative current is the current flowing out of each of the MUX pins. Positive current is the current flowing into each MUX pin.
- 6/ The MUX8561 cannot be operated with analog inputs below 0 volts.
- 7/ Not tested, guaranteed to the specified limits.

## SWITCHING CHARACTERISTICS

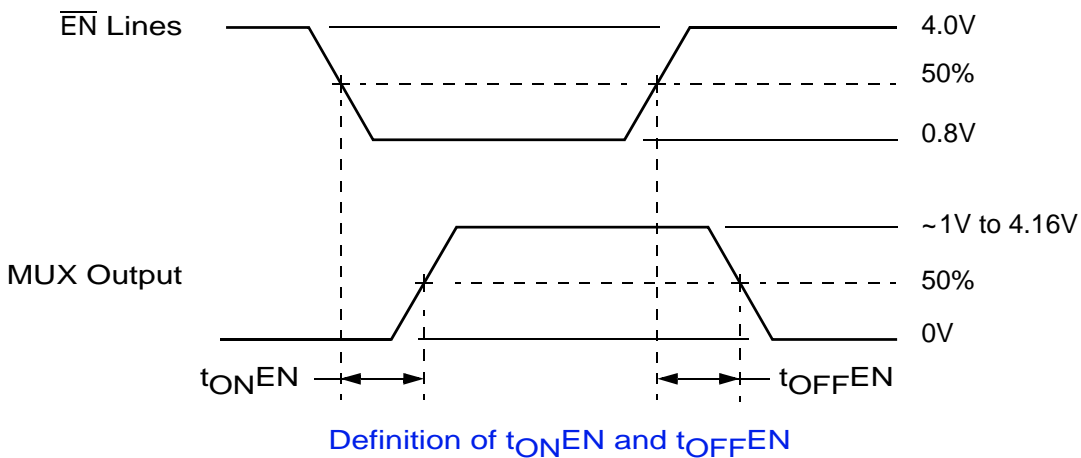
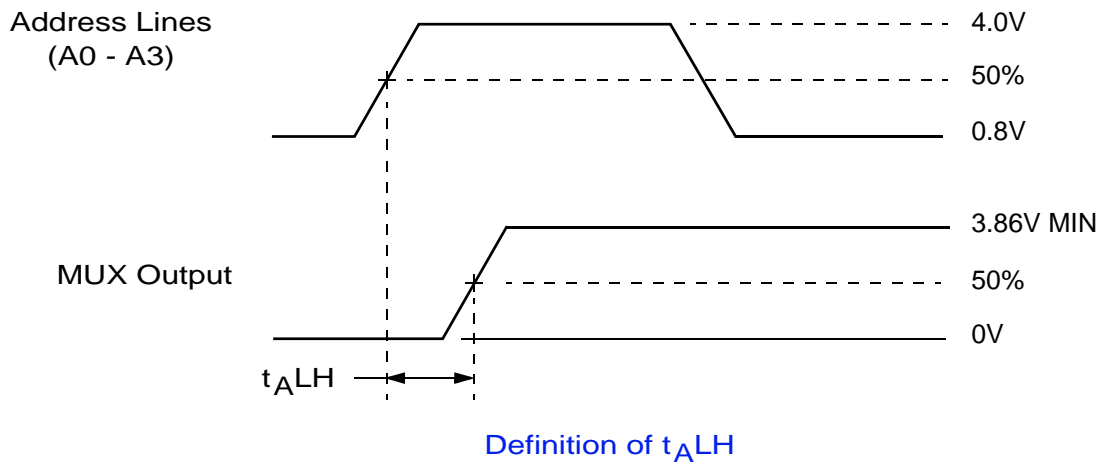
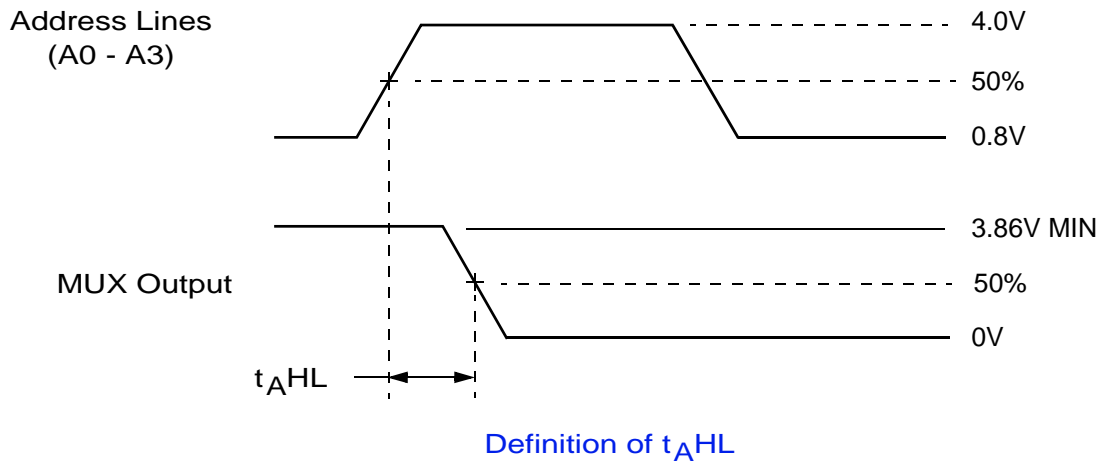
(TC = -55°C to +125°C, +VEE = +5V, VREF = +5.0V - Unless otherwise specified)

Parameter	Symbol	Conditions	Min	Max	Units
Switching Test MUX	$t_{AHL}$	$R_L = 10K\Omega$ , $C_L = 50pF$	100	700	ns
	$t_{ALH}$		100	700	ns
	$t_{ONEN}$	$R_L = 1K\Omega$ , $C_L = 50pF$	100	700	ns
	$t_{OFFEN}$		100	700	ns

### TRUTH TABLE (CH0 – CH15)

A3	A2	A1	A0	$\overline{\text{EN}}$ (0-15)	"ON" CHANNEL <u>1/</u>
X	X	X	X	H	NONE
L	L	L	L	L	CH0
L	L	L	H	L	CH1
L	L	H	L	L	CH2
L	L	H	H	L	CH3
L	H	L	L	L	CH4
L	H	L	H	L	CH5
L	H	H	L	L	CH6
L	H	H	H	L	CH7
H	L	L	L	L	CH8
H	L	L	H	L	CH9
H	L	H	L	L	CH10
H	L	H	H	L	CH11
H	H	L	L	L	CH12
H	H	L	H	L	CH13
H	H	H	L	L	CH14
H	H	H	H	L	CH15

1/ Between CH0-15 and OUTPUT (0-15), CURRENT (0-15)



NOTE:  $f = 10\text{KHz}$ , Duty cycle = 50%.

## MUX8561 SWITCHING DIAGRAMS

## PIN NUMBERS & FUNCTIONS

MUX8561 – 56 Leads Ceramic QUAD Flat Pack			
Pin #	Function	Pin #	Function
1	CH0	29	NC
2	CH1	30	NC
3	CH2	31	NC
4	CH3	32	NC
5	CH4	33	NC
6	CH5	34	NC
7	GND	35	GND
8	GND	36	GND
9	CH6	37	NC
10	CH7	38	NC
11	CASE GND	39	VREF
12	OUTPUT (0-15)	40	NC
13	$\overline{\text{EN}}$ 0-15	41	NC
14	A0	42	NC
15	A1	43	NC
16	A2	44	NC
17	A3	45	CURRENT (0-15)
18	+VEE	46	GND
19	CH15	47	NC
20	CH14	48	NC
21	GND	49	GND
22	GND	50	GND
23	CH13	51	NC
24	CH12	52	NC
25	CH11	53	NC
26	CH10	54	NC
27	CH9	55	NC
28	CH8	56	NC

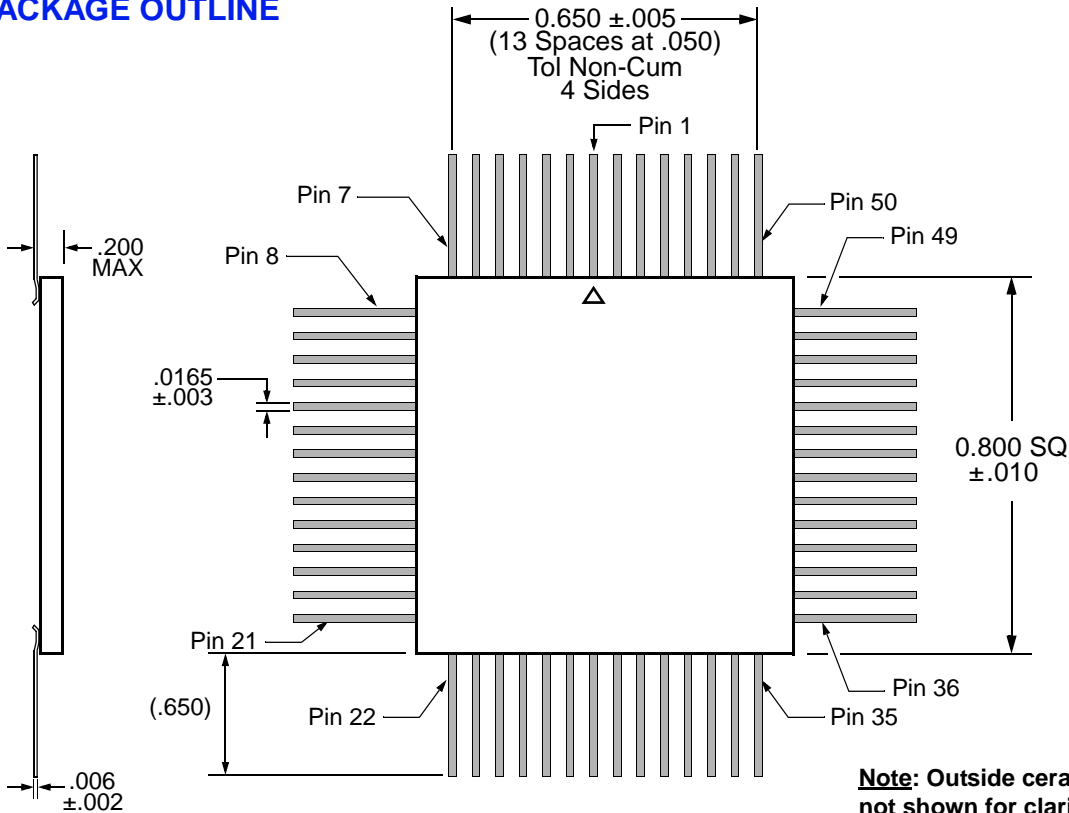
**Notes:**

1. It is recommended that all "NC" or "no connect pin", be grounded. This eliminates or minimizes any ESD or static buildup.
2. Package lid is internally connected to circuit ground (Pins 7, 8, 11, 21, 22, 35, 36, 46, 49, 50).

## ORDERING INFORMATION

Model	DSCC SMD #	Screening	Package
MUX8561-S	-	Military Temperature, -55°C to +125°C Screened in accordance with MIL-PRF-38534, Class K	QUAD Flat Pack
MUX8561-7	-	Commercial Flow, +25°C testing only	
MUX8561-201-1S	5962-1021002KXC Pending	In accordance with DSCC SMD	

## PACKAGE OUTLINE



**Note:** Outside ceramic tie bars not shown for clarity. Contact factory for details.

### EXPORT CONTROL:

This product is controlled for export under the International Traffic in Arms Regulations (ITAR). A license from the U.S. Department of State is required prior to the export of this product from the United States.

### EXPORT WARNING:

Aeroflex's military and space products are controlled for export under the International Traffic in Arms Regulations (ITAR) and may not be sold or proposed or offered for sale to certain countries. (See ITAR 126.1 for complete information.)

**PLAINVIEW, NEW YORK**  
Toll Free: 800-THE-1553  
Fax: 516-694-6715

**INTERNATIONAL**  
Tel: 805-778-9229  
Fax: 805-778-1980

**NORTHEAST**  
Tel: 603-888-3975  
Fax: 603-888-4585

**SE AND MID-ATLANTIC**  
Tel: 321-951-4164  
Fax: 321-951-4254

**WEST COAST**  
Tel: 949-362-2260  
Fax: 949-362-2266

**CENTRAL**  
Tel: 719-594-8017  
Fax: 719-594-8468

[www.aeroflex.com](http://www.aeroflex.com)    [info-ams@aeroflex.com](mailto:info-ams@aeroflex.com)

Aeroflex Microelectronic Solutions reserves the right to change at any time without notice the specifications, design, function, or form of its products described herein. All parameters must be validated for each customer's application by engineering. No liability is assumed as a result of use of this product. No patent licenses are implied.



Our passion for performance is defined by three attributes represented by these three icons: solution-minded, performance-driven and customer-focused