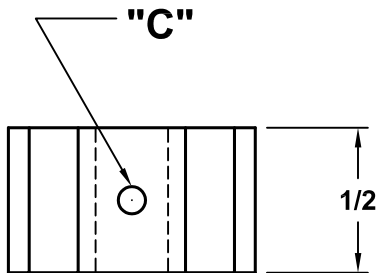
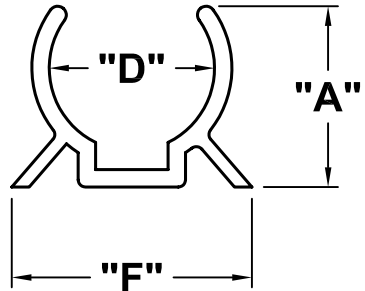


REVISIONS			DOC. NO. SPC-F005 * Effective: 7/8/02 * DCP No: 1398					
DCP #	REV	DESCRIPTION	DRAWN	DATE	CHECKD	DATE	APPRVD	DATE
811	C	Dwg # was CS-***; remove obs p/n CS-4, CS-16, CS-22	JWM	3/9/01	JC	3/21/01	JC	3/21/01
1865	D	RoHS ADDED	DCM	10/17/05	JWM	10/18/05	JWM	10/18/05



SPC Type No.	"D" Holding Diameter	"A" Height (Ref)	"C" Hole Diameter	"F" (Ref)
CS-6	3/8" [9.5]	13/32" [10.3]	3/32" [2.4]	33/64" [13.1]
CS-8	1/2" [12.7]	1/2" [12.7]		21/32" [16.7]
CS-10	5/8" [15.9]	5/8" [15.9]		53/64" [22.6]
CS-12	3/4" [19.1]	25/32" [19.8]	5/32" [4.0]	57/64" [22.6]

- NOTES:
1. Material: PVC
 2. Color: Black
 3. Flammability Rating: UL94V-0



DISCLAIMER:
ALL STATEMENTS AND TECHNICAL INFORMATION CONTAINED HEREIN ARE BASED UPON INFORMATION AND/OR TESTS WE BELIEVE TO BE ACCURATE AND RELIABLE. SINCE CONDITIONS OF USE ARE BEYOND OUR CONTROL, THE USER SHALL DETERMINE THE SUITABILITY OF THE PRODUCT FOR THE INTENDED USE AND ASSUME ALL RISK AND LIABILITY WHATSOEVER IN CONNECTION THEREWITH.

TOLERANCES:
UNLESS OTHERWISE SPECIFIED, DIMENSIONS ARE FOR REFERENCE PURPOSES ONLY.

DRAWN BY:	DATE:
JC	9/3/91
CHECKED BY:	DATE:
JC	9/3/91
APPROVED BY:	DATE:
JC	9/3/91

DRAWING TITLE: Component Clips			
SIZE A	DWG. NO. TA-297	ELECTRONIC FILE TA-297.dwg	REV D
SCALE: NTS	U.O.M.: INCHES [mm]	SHEET: 1 OF 1	