

Approvals:

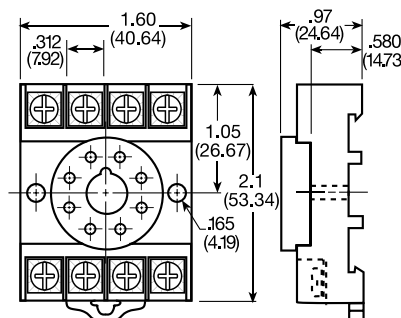
DIN Rail or Surface Mount Sockets

8 Pin Octal Socket (600 VAC)

Description

8 pin 35 mm DIN rail or surface mount socket. OT08PC is rated at 10 A at 600 V AC and has pressure clamp terminals. For use with AWG 12 to 22 (3.2 to 0.33 mm²) wire sizes. Hold-down clips not available.

P/N: •OT08PC



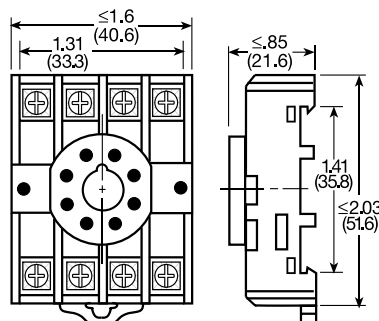
Inches (Millimeters)

8 Pin Octal Socket (600 VAC)

Description

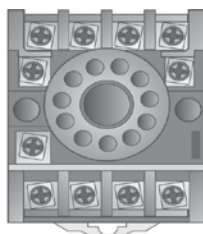
May be surface mounted with two #6 (M 3.5 x 0.6) screws or snaps onto a 35 mm DIN rail. A spring mechanism allows easy removal. Screw terminals with captive wire clamps accept up to two #14 AWG (2.45 mm²) wires. Rated 10 A at 600 V AC. Uses PSC8 hold-down clips.

P/N: •NDS-8



Inches (Millimeters)

Approvals:



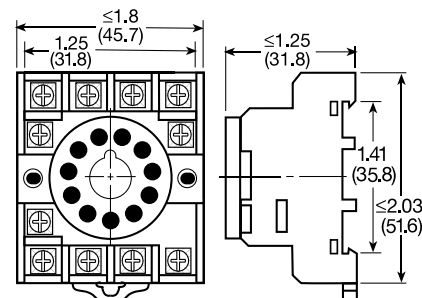
Approvals:

11 Pin Magal Socket

Description

May be surface mounted with two #6 (M 3.5 x 0.6) screws or snaps onto a 35 mm DIN rail. A spring mechanism allows easy removal. Screw terminals with captive wire clamps accept up to two #14 AWG (2.45 mm²) wires. Rated 10 A at 600 V AC. Uses PSC11 hold-down clips.

P/N: •NDS-11



Inches (Millimeters)

11 Pin Magal Socket

Description

11 pin 35 mm DIN rail or surface mount socket. OT11PC is rated at 10 A at 600 V AC and has pressure clamp terminals. For use with AWG 12 to 22 (3.2 to 0.33 mm²) wire sizes. Hold-down clips are not available.

P/N: •OT011PC

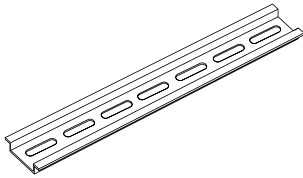
Hold-Down Clips

Description

Securely mounts plug in controls in any position. Also provides protection against vibration. Select the PSC8 for use with NDS-8 or the PSC11 for use with NDS-11 sockets. Comes in sets of two.

P/N: •PSC8
•PSC11



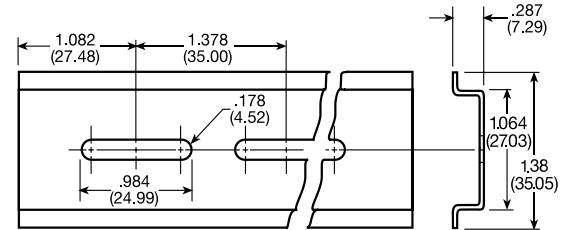


DIN Rail

Description

Industry standard 35 mm aluminum or steel DIN rail. C103PM aluminum rail is available in 36 in. (91.4 cm) lengths.

P/N: • C103PM (Al)




Inches (Millimeters)

C103PM Aluminum Rail

(Prepunched cut out dimensions are approximate.)



Approvals: 

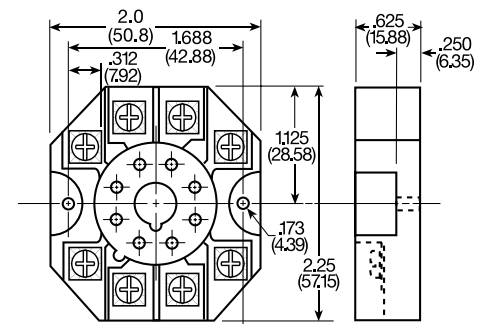
Surface Mount Sockets

8 Pin Octal Socket (600 VAC)

Description

8 pin surface mount socket with binder head screw terminals. Rated 10 A at 600 V AC. When used with TDM, TDB, TDS Series timers the combination is UL Listed. Uses PSCRB8 hold-down brackets.

P/N: • P1011-6



Inches (Millimeters)



Hold-Down Brackets

Description

Designed for use with P1011-6 socket. Securely mounts 8 pin plug-in controls in any position, and provides protection against vibration. Comes in sets of two.

P/N: • PSCRB8