

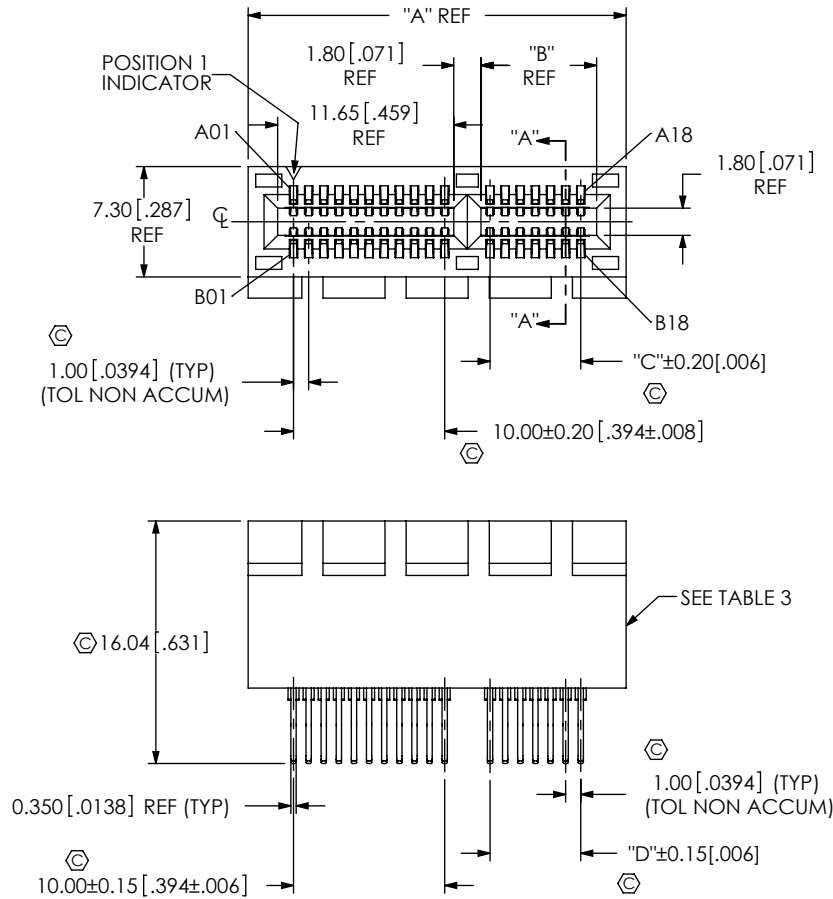
# REVISION F

DO NOT  
SCALE FROM  
THIS PRINT

## NOTES:

1.  $\text{⌀}$  REPRESENTS A CRITICAL DIMENSION.
2. MINIMUM CONTACT RETENTION: 4.9N.
3. PARTS TO BE PACKAGE IN TUBE.

## DESIGNED & DIMENSIONED IN MILLIMETERS[INCHES]



## PCIE-XXX-02-X-D-EMSX-XX

No OF POSITIONS  
-036, -064, -098, -164  
(DOUBLE ROW)

LEAD STYLE  
-02: 1.57[.062]" THICK CARD

PLATING SPECIFICATION  
-S: 30u" Au IN THE CONTACT AREA,  
TIN ON THE TAIL  
-F: 3u" Au IN THE CONTACT AREA,  
TIN ON THE TAIL

OPTION  
-BG: BOARD GUIDE

OPTION  
-EMS2: 1.57[.062]" PCB  
-EMS3: 2.36[.093]" PCB

ROW SPECIFICATION  
-D: DOUBLE ROW

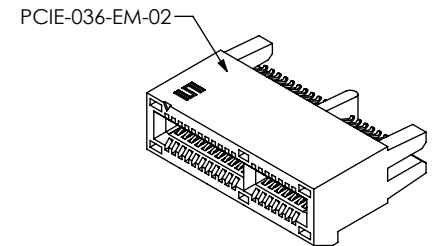
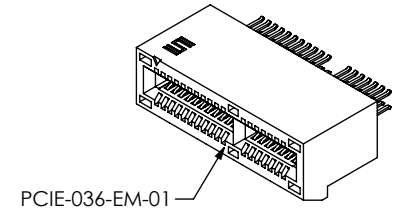


FIG 1  
PCIE-036-02-X-D-EMS2 SHOWN

TABLE 2

| OPTION | LEAD STYLE | "E"          | "F"          |
|--------|------------|--------------|--------------|
| NONE   | -EMS2      | 1.50 [0.059] | N/A          |
|        | -EMS3      | 2.25 [0.089] | N/A          |
| -BG    | -EMS2      | 1.50 [0.059] | 1.65 [0.065] |
|        | -EMS3      | 2.25 [0.089] | 2.42 [0.095] |

TABLE 3

| OPTION | EDGE MOUNT OPTION | BODY          | CONTACT/PIN |
|--------|-------------------|---------------|-------------|
| NONE   | -EMS2             | PCIE-XX-EM-01 | C-267-02-X  |
|        | -EMS3             | PCIE-XX-EM-01 | C-267-04-X  |
| -BG    | -EMS2             | PCIE-XX-EM-02 | C-267-01-X  |
|        | -EMS3             | PCIE-XX-EM-03 | C-267-03-X  |

TABLE 1

| No. OF POS | "A"           | "B"           | "C"           | "D"           |
|------------|---------------|---------------|---------------|---------------|
| -036       | 25.00 [0.984] | 7.65 [0.301]  | 6.00 [0.236]  | 6.00 [0.236]  |
| -064       | 39.00 [1.535] | 21.65 [0.852] | 20.00 [0.787] | 20.00 [0.787] |
| -98        | 56.00 [2.205] | 38.65 [1.522] | 37.00 [1.457] | 37.00 [1.457] |
| -164       | 89.00 [3.504] | 71.65 [2.821] | 70.00 [2.756] | 70.00 [2.756] |

UNLESS OTHERWISE SPECIFIED,  
DIMENSIONS ARE IN  
MILLIMETERS[INCHES].  
TOLERANCES ARE:  
DECIMALS ANGLES  
X.X: ±0.3 [.01]  
X.XX: ±0.13 [.005]  
X.XXX: ±0.051 [.0020]

### PROPRIETARY NOTE

THIS DOCUMENT CONTAINS INFORMATION  
CONFIDENTIAL AND PROPRIETARY TO  
SAMTEC, INC. AND SHALL NOT BE REPRODUCED  
OR TRANSFERRED TO OTHER DOCUMENTS OR  
DISCLOSED TO OTHERS OR USED FOR ANY  
PURPOSE OTHER THAN THAT WHICH IT WAS  
OBTAINED WITHOUT THE EXPRESSED WRITTEN  
CONSENT OF SAMTEC, INC.

MATERIAL: DO NOT SCALE DRAWING SHEET SCALE: 2:1

INSULATOR: LCP UL 94 VO, COLOR: BLACK  
CONTACT : PHOS BRONZE

**samtec**

520 PARK EAST BLVD, NEW ALBANY, IN 47150  
PHONE: 812-944-6733 FAX: 812-948-5047  
e-Mail: info@SAMTEC.com code: 55322

DESCRIPTION:  
PCI EXPRESS EDGE MOUNT ASSEMBLY

DWG. NO.  
PCIE-XXX-02-X-D-EMSX-XX

BY: VICKY Z 09/01/2009 SHEET 1 OF 2

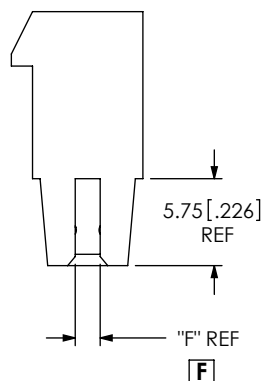
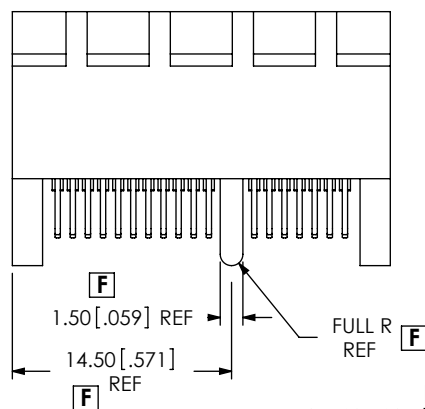
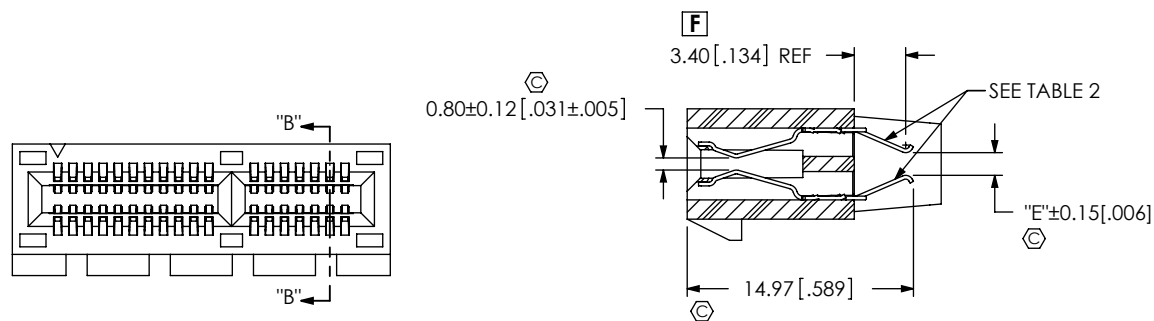
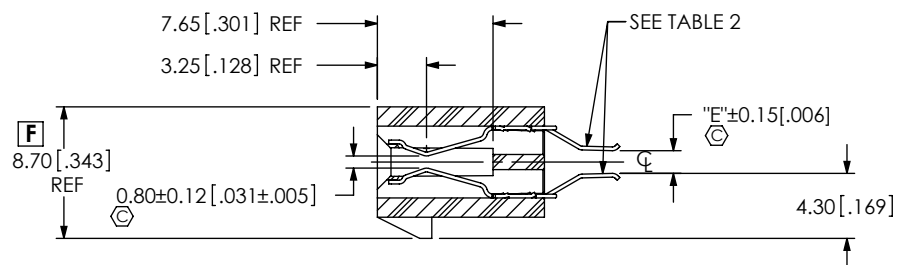
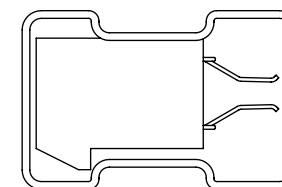
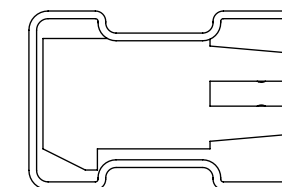


FIG 2  
PCI-E-036-02-X-D-EMS2-BG SHOWN  
(SAME AS FIG 1, EXCEPT AS SHOWN)



PT-PCIE002-EM  
TP-07

WITHOUT -BG PACKAGE VIEW



PT-PCIE002-EM  
TP-07

-BG PACKAGE VIEW

**PROPRIETARY NOTE**  
THIS DOCUMENT CONTAINS INFORMATION  
CONFIDENTIAL AND PROPRIETARY TO  
SAMTEC, INC. AND SHALL NOT BE REPRODUCED  
OR TRANSFERRED TO OTHER DOCUMENTS OR  
DISCLOSED TO OTHERS OR USED FOR ANY  
PURPOSE OTHER THAN THAT WHICH IT WAS  
OBTAINED WITHOUT THE EXPRESSED WRITTEN  
CONSENT OF SAMTEC, INC.

DO NOT SCALE DRAWING

SHEET SCALE: 2:1

**samtec**

520 PARK EAST BLVD, NEW ALBANY, IN 47150  
PHONE: 812-944-6733 FAX: 812-948-5047  
e-Mail: info@SAMTEC.com code: 55322

DESCRIPTION:  
PCI EXPRESS EDGE MOUNT ASSEMBLY

DWG. NO.  
**PCI-E-XXX-02-X-D-EMSX-XX**

BY: VICKY Z 09/01/2009 SHEET 2 OF 2