

**Product number FA10888_TINA-RS**

Family	Tina	FWHM	14 degrees
Type	Assembly	Efficiency	93 %
LED	MX-6	cd/Im	7.730
Color	White	Gerber File	Available
Diameter	16.1 mm		
Height	11.1 mm		
Style	Round		
Optic Material	PMMA		
Holder Material	PC		
Fastening	Tape		
Status	On production		

**Product number FA10646_TINA-D**

Family	Tina	FWHM	19 degrees
Type	Assembly	Efficiency	91 %
LED	MX-6	cd/Im	4.810
Color	White	Gerber File	Available
Diameter	16.1 mm		
Height	11.1 mm		
Style	Round		
Optic Material	PMMA		
Holder Material	PC		
Fastening	Tape		
Status	On production		

**Product number FA10839_TINA-W**

Family	Tina	FWHM	37 degrees
Type	Assembly	Efficiency	90 %
LED	MX-6	cd/Im	1.960
Color	White	Gerber File	Available
Diameter	16.1 mm		
Height	11.1 mm		
Style	Round		
Optic Material	PMMA		
Holder Material	PC		
Fastening	Tape		
Status	On production		

**Product number FA10901_TINA-WW**

Family	Tina	FWHM	52 degrees
Type	Assembly	Efficiency	89 %
LED	MX-6	cd/Im	1.180
Color	White	Gerber File	Available
Diameter	16.1 mm		
Height	11.1 mm		
Style	Round		
Optic Material	PMMA		
Holder Material	PC		
Fastening	Tape		
Status	On production		



PRODUCT DATASHEET

Tina series

last update 30/12/2013



NOTE: The typical divergence will be changed by different color, chip size and chip position tolerance. The typical total divergence is the full angle measured where the luminous intensity is half of the peak value.



PRODUCT DATASHEET

Tina series

last update 30/12/2013



GENERAL INFORMATION

- Product series especially designed & optimized for MX-6 series of LEDs.
- Special care taken to make light distribution as uniform as possible.
- Lens material optical grade PMMA with high UV and temperature resistance. Allows use of high current and temperature conditions.

Please find more information about used material from below:

http://ledil.fi/sites/default/files/Documents/Technical/Material/PMMA%20N%20UL94_Yellow%20Card.pdf

<http://ledil.fi/sites/default/files/Documents/Technical/Material/PMMA%20N%20PLEXIGLAS-Datasheet.pdf>

- Optic holder molded by high quality PC material (120 degrees of Celcius / 248 degrees of Fahrenheit).

- Fastening to heat sink with a PU foam adhesive tape of automotive grade. Please find fastening details by clicking link: http://www.ledil.com/datasheets/DataSheet_TAPE.pdf

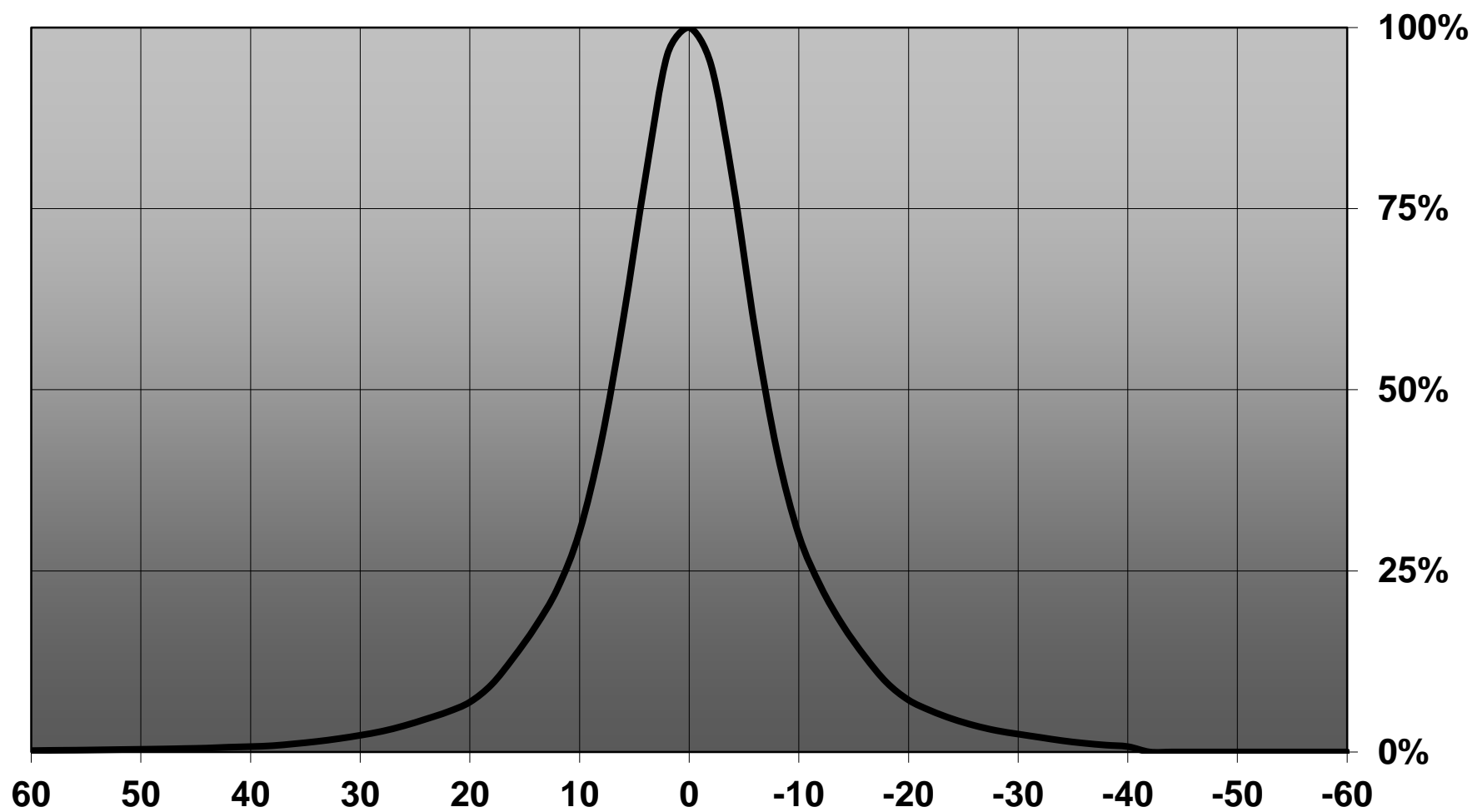
NOTE 1: We advise customer to ensure the suitability and sufficiency of the bond in the end product. For example, mechanical stress, vibration and holes on the surface of the circuit board weaken the strength of the tape.

NOTE 2: Assembly to the surface must be made straight, so the tape bonds constant and balanced with fastening surface. Slanted assembly might cause unbalanced bond to the surface. All surfaces where tape is applied must be clean, dry and free from grease and dirt.

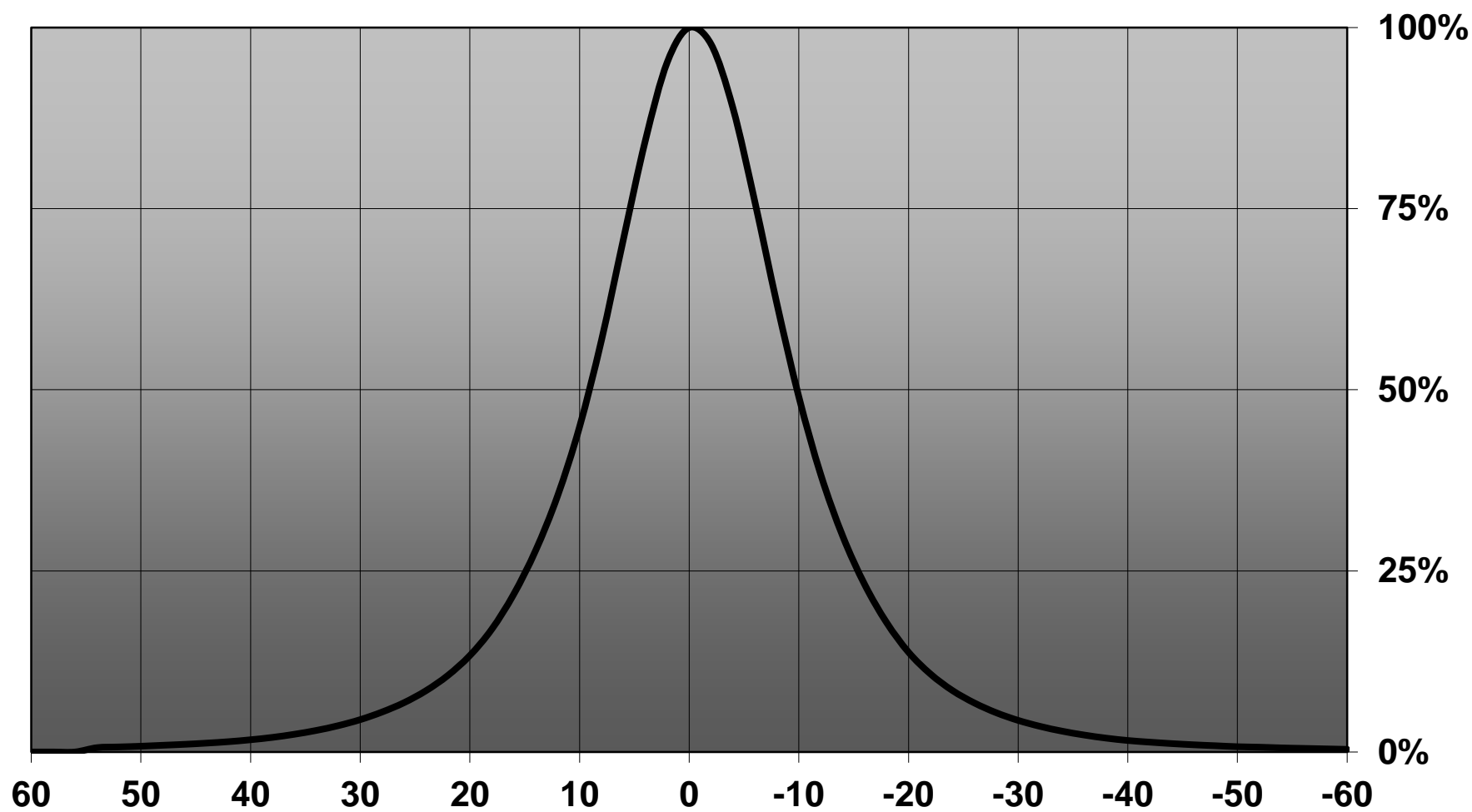
If cleaning of PCB surfaces is needed, please follow strictly the cleaning instructions of your LED manufacturer - this is important as cleaning shall under no circumstances damage LEDs or other electronics components on the PCB.

Further note that optical components shall not be cleaned with any chemicals - only micro fiber cloth may be used to remove fingerprints or other traces from handling.

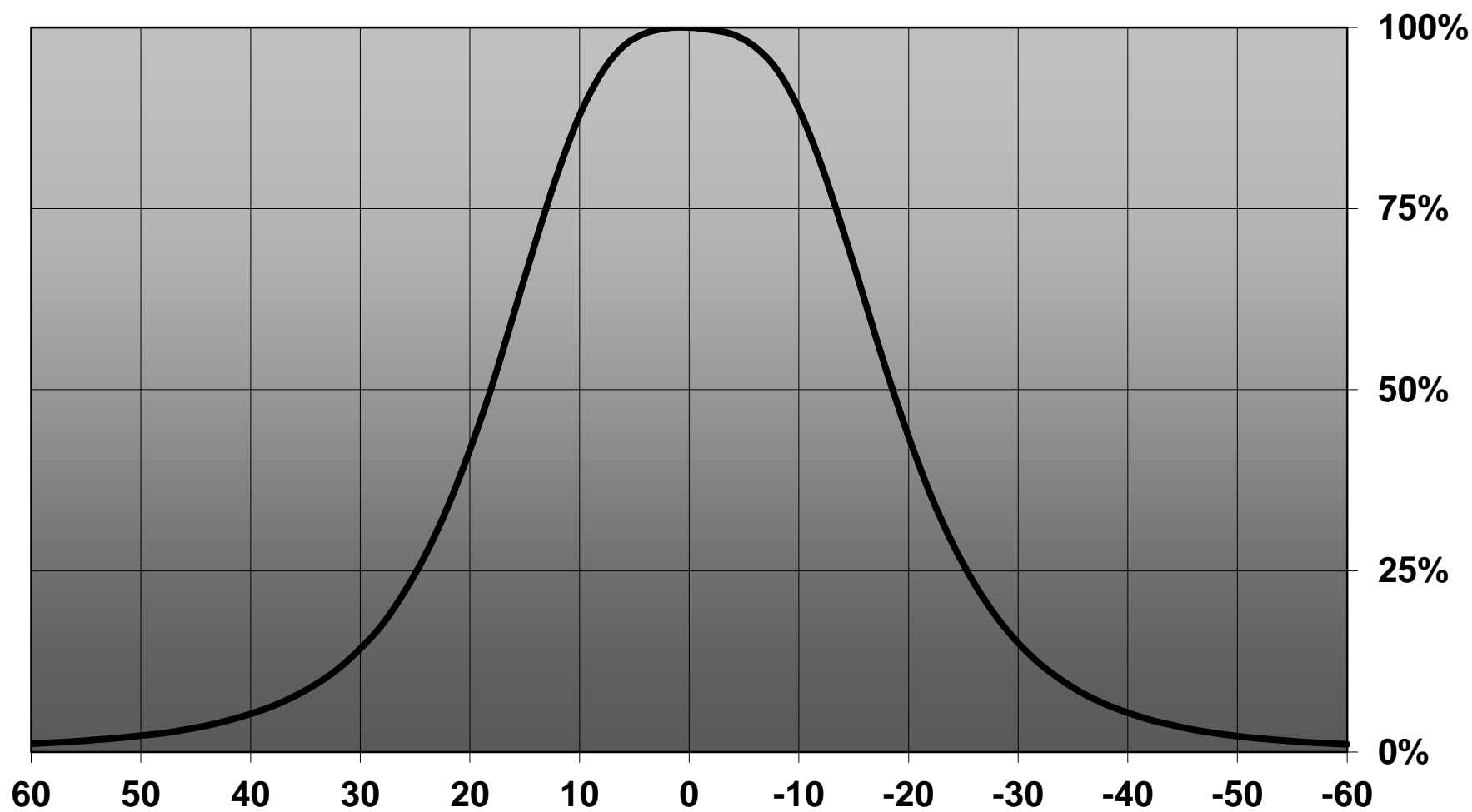
Relative intensity of FA10888-TINA-RS_(MX-6)



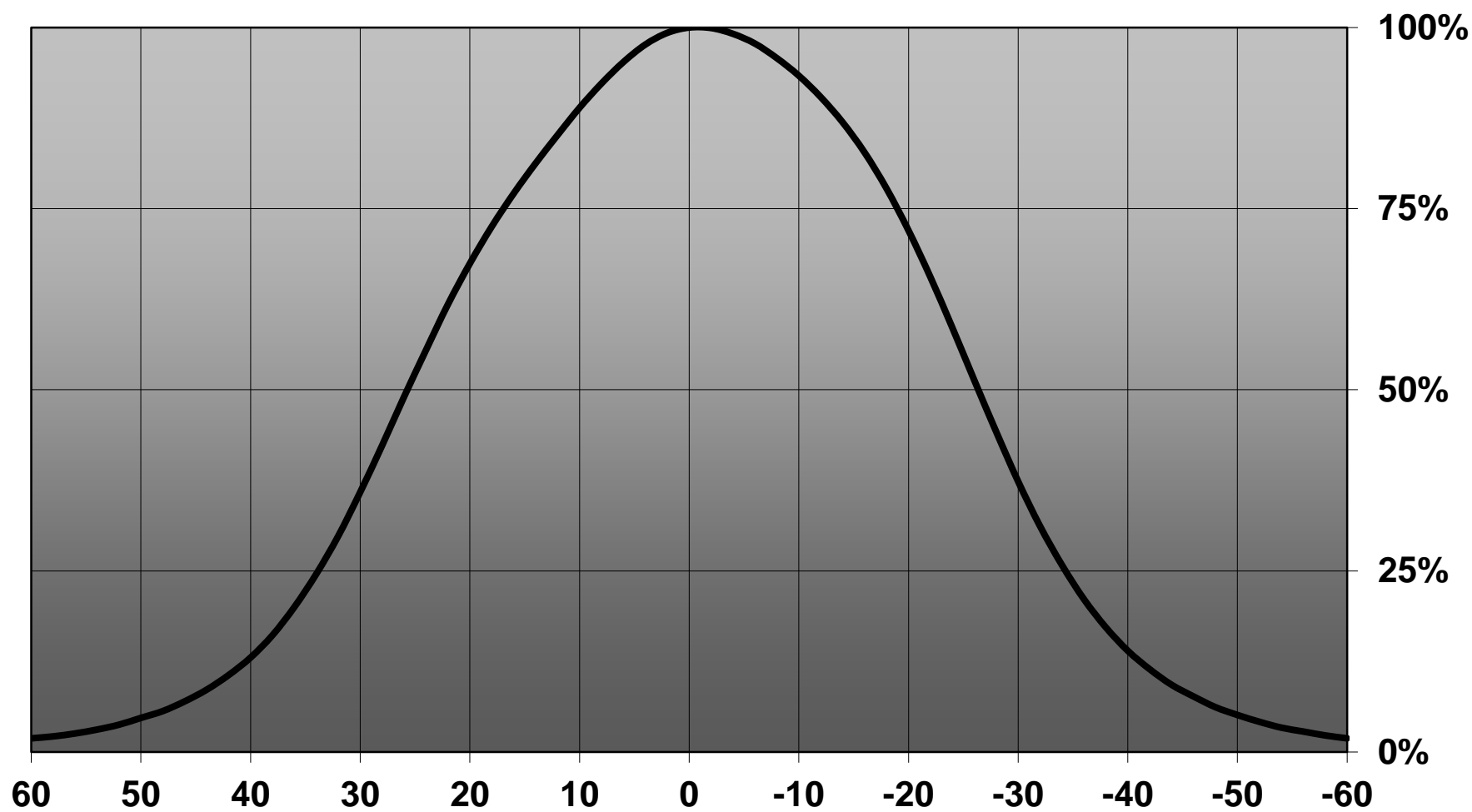
Relative intensity of FA10646_TINA-D_(MX-6)



Relative intensity of FA10839_TINA-W_(MX-6)



Relative intensity of FA10901_TINA-WW_(MX-6)



D

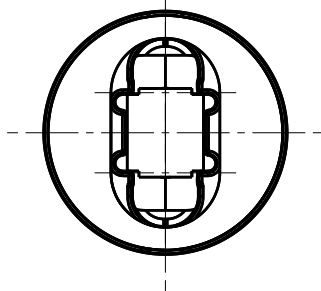
C

B

A

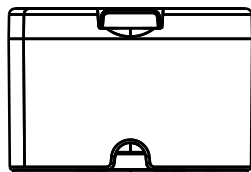
4

4



Bottom view

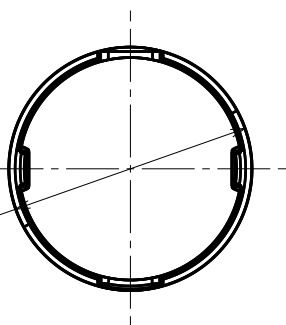
10.9



Side view

Tape

3



Top view

 $\varnothing 16.1$

2

2

MATERIALS

Lens: PMMA

Holder: PC

Tape: PU Foam

This drawing is our property.
It can't be reproduced
or communicated without
our written agreement.



Ledil Oy
Tehdaskatu 13
FIN-24100 SALO
Finland

DRAWING TITLE

Datasheet Assembly Tina MX-6 Series

DRAWN BY

pv

DATE

18.11.2009

CHECKED BY

sn

DATE

17.11.2009

DESIGNED BY

HH

DATE

22.07.2008

SIZE

A4

DRAWING NUMBER

REV

1

SCALE

2:1

WEIGHT (g)

-

SHEET

1/1

D

A

1