

MICRO SWITCH

A DIVISION OF MINNEAPOLIS-HONEYWELL REGULATOR COMPANY

FREEPORT, MINNESOTA

FED. MFR. CODE 91929

ACTUATOR-SWITCH

CATALOG LISTING

JX-46

JX-46

M

DRAWING
NUMBER

26

X3

ISSUE
3

REPLACES

RELEASE NO. SR 9213

CHECK

REVISIONS

A CO15829

MBF
17 APRIL 61

B CO22579

OMW
28 APR 67

C CO22579

MBF
19 APR 68

D CO79303

DLT
8 MAR 95

E CO82929

DLT
13 MAY 96

CHECK

DLT
13 MAY 96

DLT
13 MAY 96

DLT
13 MAY 96

DLT
13 MAY 96

DLT
13 MAY 96

DLT
13 MAY 96

DLT
13 MAY 96

DLT
13 MAY 96

DLT
13 MAY 96

DLT
13 MAY 96

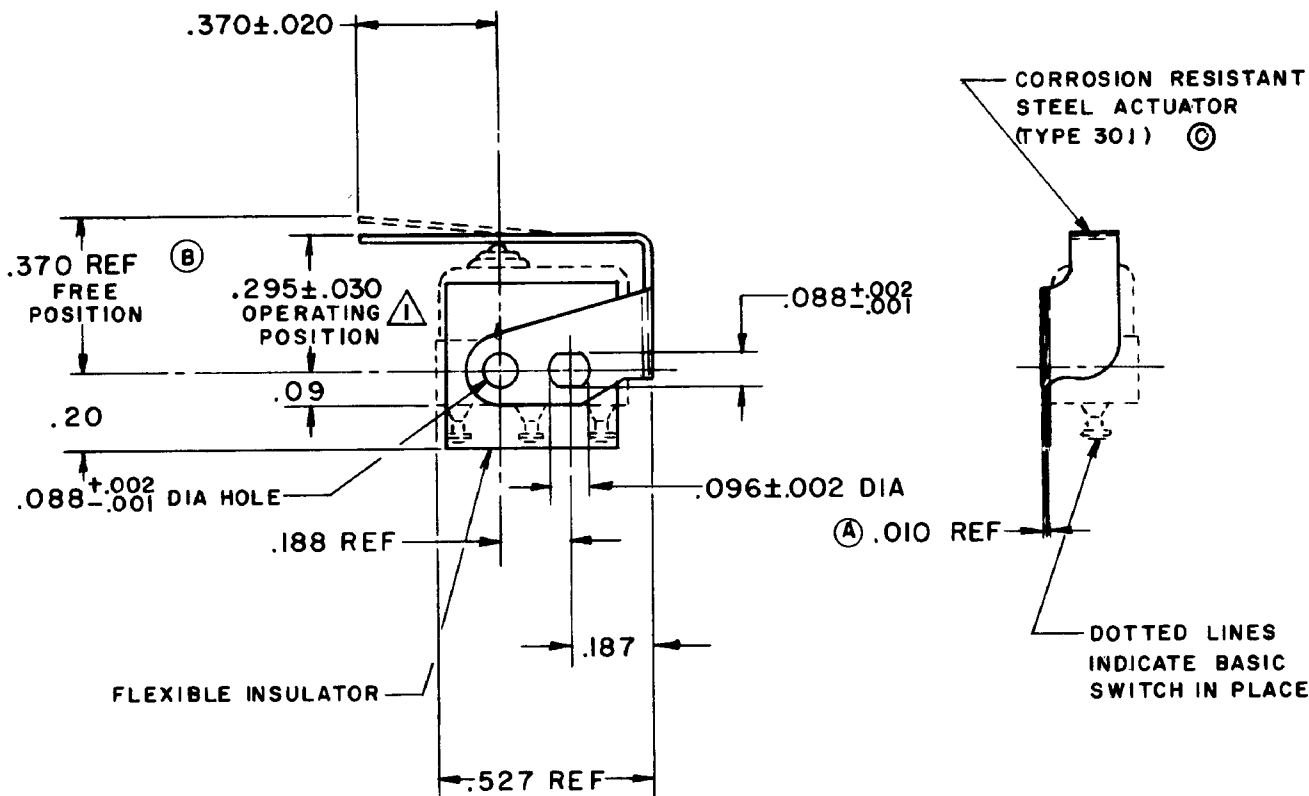
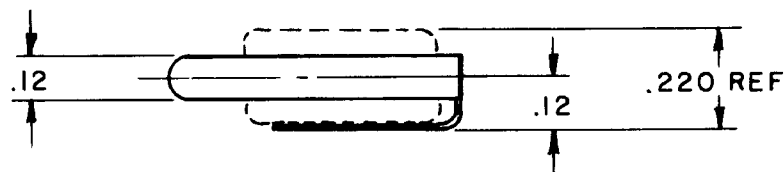
DLT
13 MAY 96

DLT
13 MAY 96

DLT
13 MAY 96

DLT
13 MAY 96

DLT
13 MAY 96



NOTE -
⚠ SLIGHT ROTATION BETWEEN BASIC AND ACTUATOR MAY BE NECESSARY TO OBTAIN OPERATING POSITION, BASED ON USING NO. 2-56 MOUNTING SCREWS

THIS DRAWING COVERS A PROPRIETARY ITEM AND IS THE PROPERTY OF MICRO SWITCH, A DIVISION OF MINNEAPOLIS-HONEYWELL REGULATOR CO. THIS DRAWING IS NOT TO BE COPIED OR USED WITHOUT THE APPROVAL OF MICRO SWITCH.

CHARACTERISTICS WITH ISX1-T BASIC SWITCH INSTALLED

OPERATING FORCE ——— 6 OZ MAX
RELEASE FORCE ——— 1 OZ MIN
DIFFERENTIAL TRAVEL ——— .025 MAX
OVERTRAVEL ——— .015 MIN

ELECTRICAL DATA

CONTACT ARRANGEMENT

BREAK DISTANCE

SCALE 2 TO 1

DO NOT SCALE PRINT

UNLESS OTHERWISE SPECIFIED

DIMENSIONS ARE IN INCHES

TOLERANCES ARE:

ONE PLACE (.0) ±.030
TWO PLACE (.00) ±.015
THREE PLACE (.000) ±.005
ANGLES ±

WEIGHT

Mouser Electronics

Authorized Distributor

Click to View Pricing, Inventory, Delivery & Lifecycle Information:

[Honeywell:](#)

[JX-46](#)