

Rotary Potentiometer

P120 Series



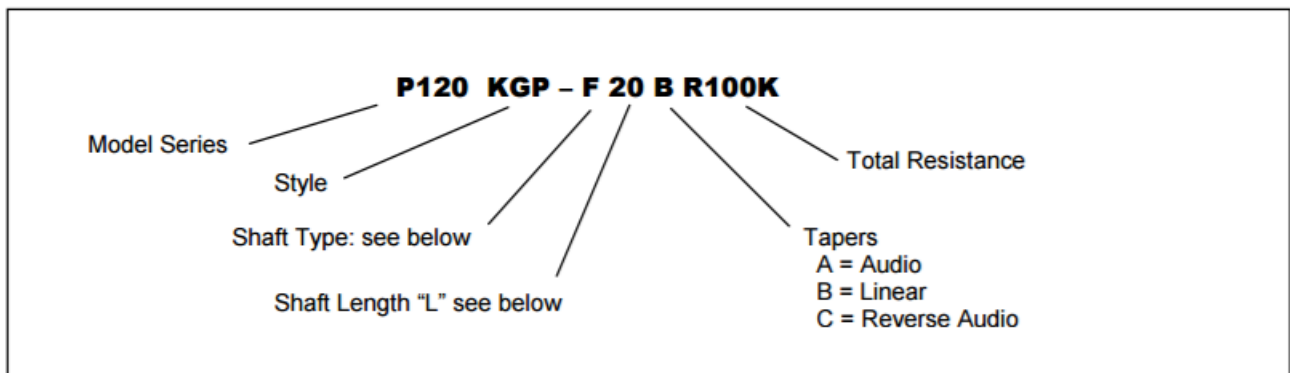
Features:

- 12 mm
- Conductive plastic element
- Single/dual unit
- 100,000 cycle life
- Insulated shaft
- RoHS compliant



Model Styles

| | |
|------------------------------------|---------|
| Side Adjust, PCB pins, Single unit | P120K |
| Top Adjust, PCB pins, Single unit | P120PK |
| Top Adjust, PCB pins, Dual unit | P120KGP |
| Side Adjust, PCB pins, Dual unit | P120KGE |



General Note

TT Electronics reserves the right to make changes in product specification without notice or liability. All information is subject to TT Electronics' own data and is considered accurate at time of going to print.

Rotary Potentiometer

P120 Series



Electrical Specifications

| | |
|-----------------------------------|---------------------|
| Resistance Range, Ohms | 1K- 1M |
| Standard Resistance Tolerance | ± 20% |
| Residual Resistance | 20 ohms max. |
| Input Voltage, maximum | 50 Vac max. |
| Power rating, Watts | 0.05w |
| Dielectric Strength | 300Vac, 1 minute |
| Insulation Resistance, Minimum | 100M ohms at 250Vdc |
| Sliding Noise | 100mV max. |
| Gang Error (Multi-ganged) | -40dB – 0dB, ±3dB |
| Actual Electrical Travel, Nominal | 260° |

Mechanical Specifications

| | |
|-------------------------|-------------------|
| Total Mechanical Travel | 300°± 10° |
| Static Stop Strength | 50 oz-in |
| Rotational Torque | 0.5 to 1.25 oz-in |

Environmental Specifications

| | |
|-----------------------------|----------------|
| Operating Temperature Range | -40°C to +85°C |
| Rotational Life | 100,000 cycles |

General Note

TT Electronics reserves the right to make changes in product specification without notice or liability. All information is subject to TT Electronics' own data and is considered accurate at time of going to print.

Shaft Types

| | | | | | | | | |
|------------|---|----|----|----|----|----|----|----|
| TOP ADJUST | L | 15 | 17 | 20 | 25 | 30 | 35 | 40 |
| | T | 5 | 7 | 7 | 12 | 12 | 12 | 12 |

| | | | | | | |
|---|----|----|----|----|----|----|
| L | 15 | 20 | 25 | 30 | 35 | 40 |
| T | 5 | 8 | 12 | 12 | 12 | 12 |

| | | | | | |
|---|----|----|----|----|----|
| L | 15 | 20 | 25 | 30 | 35 |
| T | 5 | 7 | 7 | 12 | 12 |

| | | | | | | |
|-------------|---|----|----|----|----|----|
| SIDE ADJUST | L | 10 | 15 | 20 | 25 | 30 |
| | T | 5 | 8 | 12 | 12 | 12 |

| | | | | | |
|---|----|----|----|----|----|
| L | 10 | 15 | 20 | 25 | 30 |
| T | 5 | 8 | 12 | 12 | 12 |

| | | | | | |
|---|----|----|----|----|----|
| L | 10 | 15 | 20 | 25 | 30 |
| T | 5 | 7 | 7 | 12 | 12 |

Standard Resistance Values, Ohms

| | | | | | | | | | |
|----|----|----|-----|-----|-----|------|------|------|------|
| 1K | 2K | 5K | 10K | 20K | 50K | 100K | 200K | 500K | 1MEG |
|----|----|----|-----|-----|-----|------|------|------|------|

CIRCUIT DIAGRAM

Unless otherwise specified



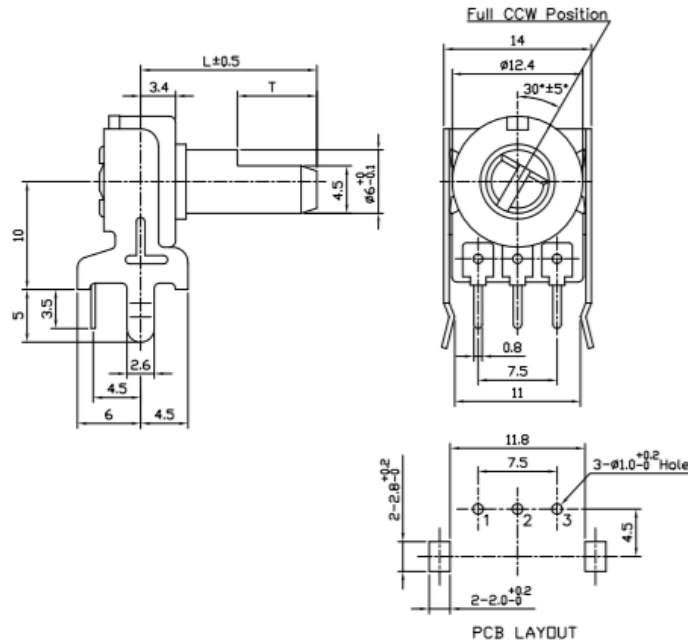
Rotary Potentiometer

P120 Series

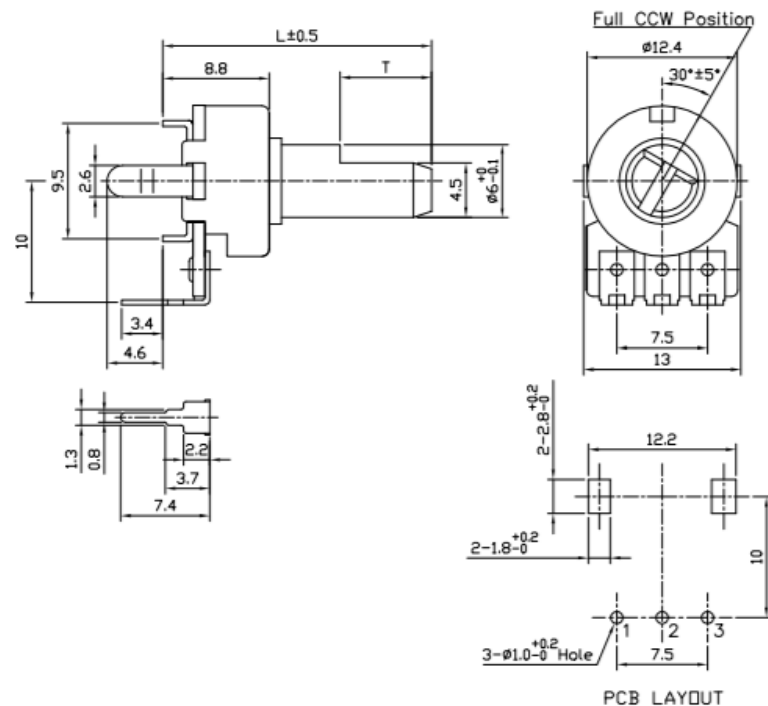


Outline Drawings

Model P120K (Side Adjust, PCB pins, Single unit)



Model P120PK (Top Adjust, PCB pins, Single unit)



General Note

TT Electronics reserves the right to make changes in product specification without notice or liability. All information is subject to TT Electronics' own data and is considered accurate at time of going to print.

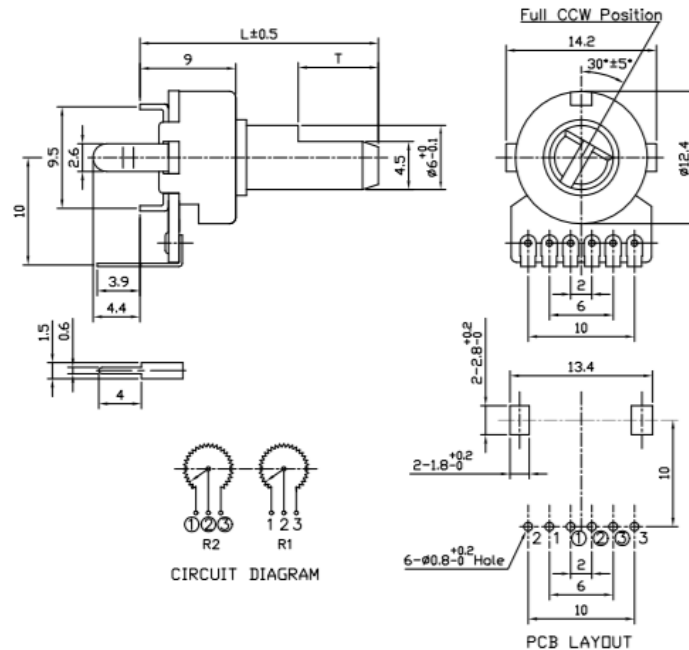
Rotary Potentiometer

P120 Series

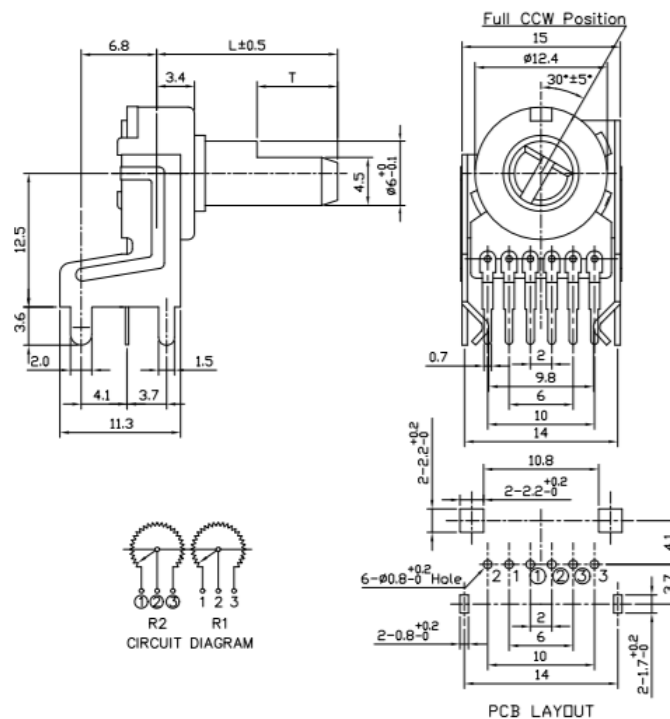


Outline Drawings

Model P120KGP (Top Adjust, PCB pins, Dual unit)



Model P120KGE (Side Adjust, PCB pins, Dual unit)



General Note

TT Electronics reserves the right to make changes in product specification without notice or liability. All information is subject to TT Electronics' own data and is considered accurate at time of going to print.