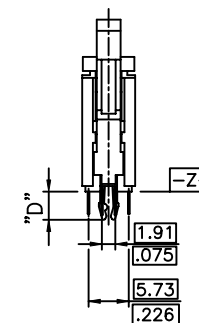
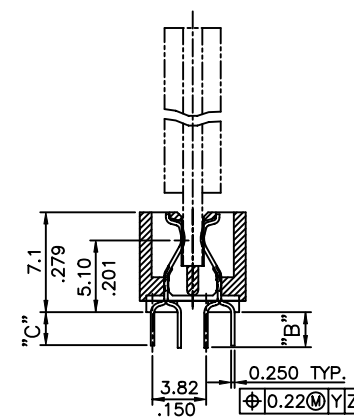
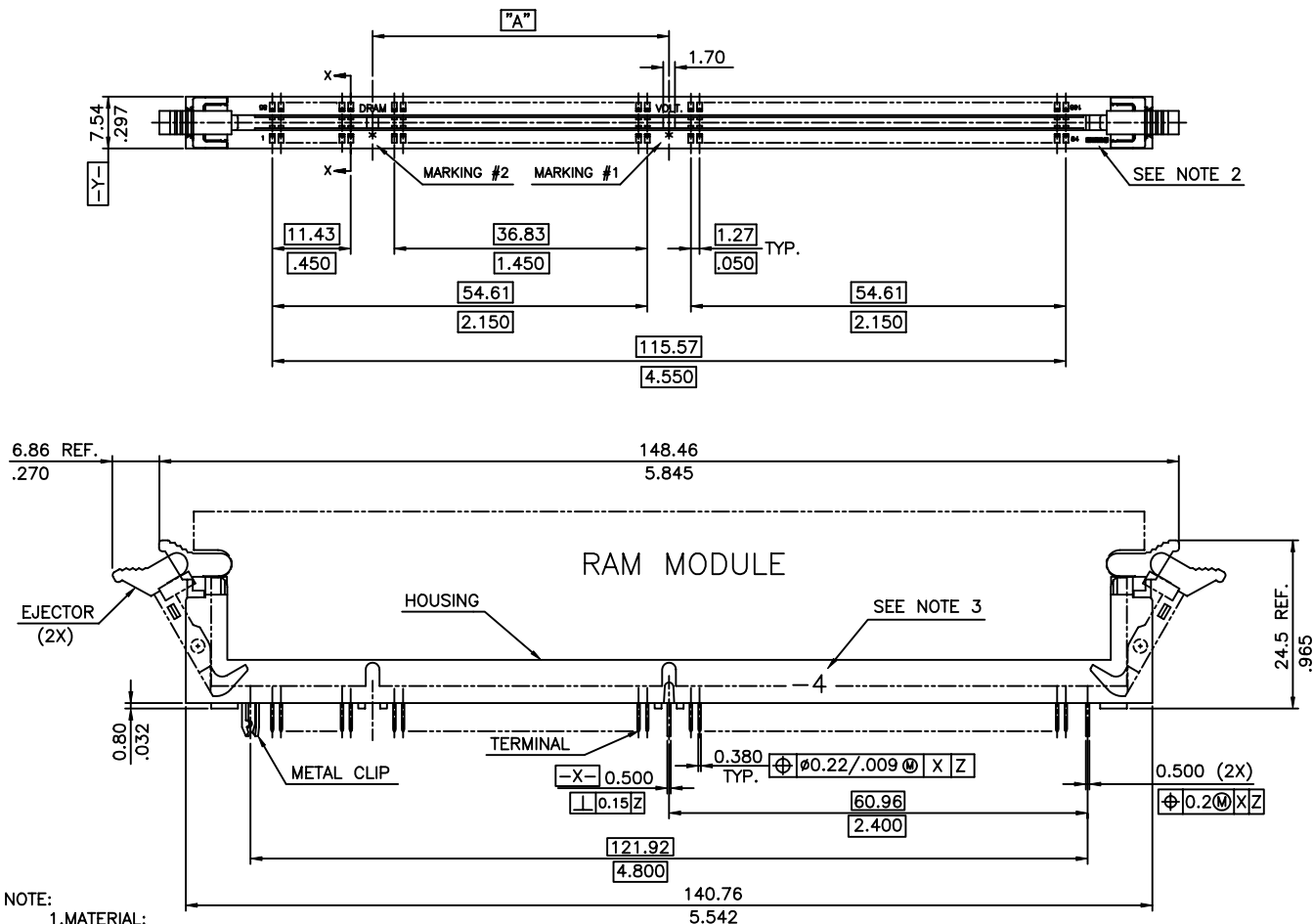


1 | 2

3 |

4



NOTE:

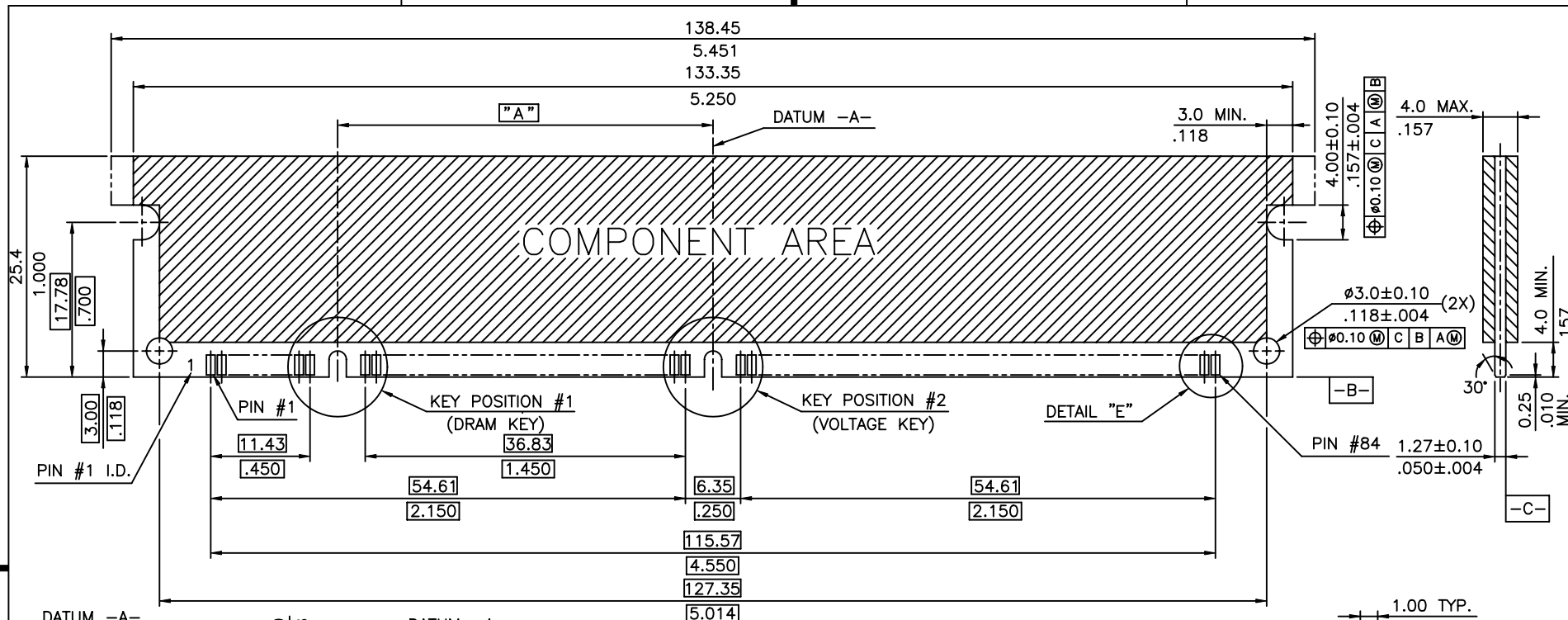
- 1.MATERIAL:  
HOUSING: LIQUID CRYSTAL POLYMER OR OTHER HIGH PERFORMANCE RESINS, GLASS FILLED UL94V-0 RATED, COLOR BLACK.  
EJECTOR: LIQUID CRYSTAL POLYMER OR OTHER HIGH PERFORMANCE RESINS, GLASS FILLED UL94V-0 RATED, COLOR NATURAL.  
TERMINAL: PHOSPHOR BRONZE.  
METAL CLIP: PHOSPHOR BRONZE.
- 2.BERG LOGO TO BE APPROXIMATELY LOCATED AS SHOWN ON PRINT.
- 3."-4" LOGO FOR COMPAQ ONLY.
- 4.PRODUCT SPECIFICATION: GS-12-018.
- 5.INSTRUCTION FOR INSTALLING AND REMOVING A DIMM BOARD.  
PLEASE SEE SHEET 5.
6. THIS PRODUCT MEETS EUROPEAN UNION DIRECTIVES AND OTHER COUNTRY REGULATIONS AS DESCRIBED IN GS-22-008.
7. THE HOUSING WILL WITHSTAND EXPOSURE TO 260° PEAK TEMPERATURE FOR 10 SECONDS IN A WAVE SOLDER APPLICATION.

mat'l. code				tolerances unless otherwise specified		CUSTOMER COPY		A FCI www.fciconnect.com	
ltr	ecn no	dr	date		.X ± 0.38/.015	projection		title	
J	T05-0039	R C	02/25/05	linear	.XX ± 0.25/.010			DIMM 168P .050" 1-ROW,	
K	T05-0043	R C	03/02/05		.XXX ± 0.15/.005			V/T ASS'Y METAL CLIP	
D	T80320	M W	07/22/98	angles	0° ± 2°			product family	DIMM
E	T90103	M W	03/12/99	dr	ANNY HUANG	05/26/97		size	dwg no
F	T20047	M W	02/05/02	enrg	ANGE LIOU	05/26/97			
G	T04-0121	M W	03/15/04	chr	ANGE LIOU	05/26/97			
H	T04-0145	M W	04/15/04	appd	JENN TSAO	05/26/97			
sheet	revision	K	G	K	J	G			
index	sheet	1	2	3	4	5			

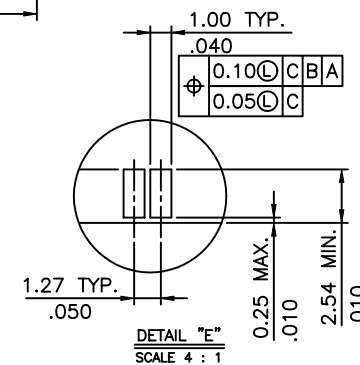
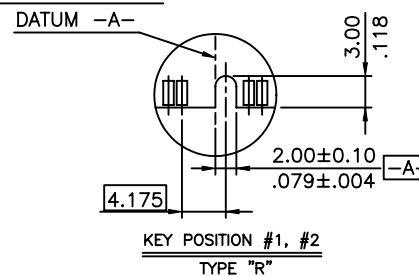
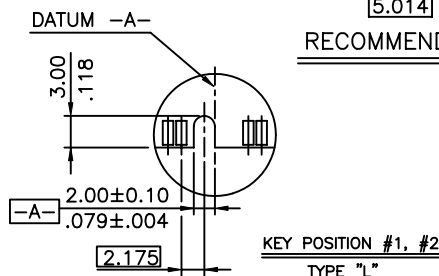
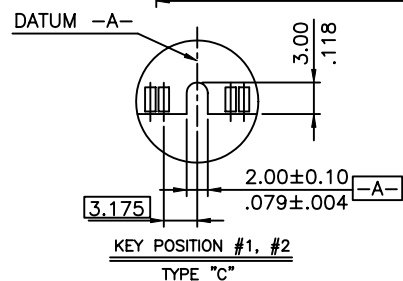
1 | 2

3 |

4

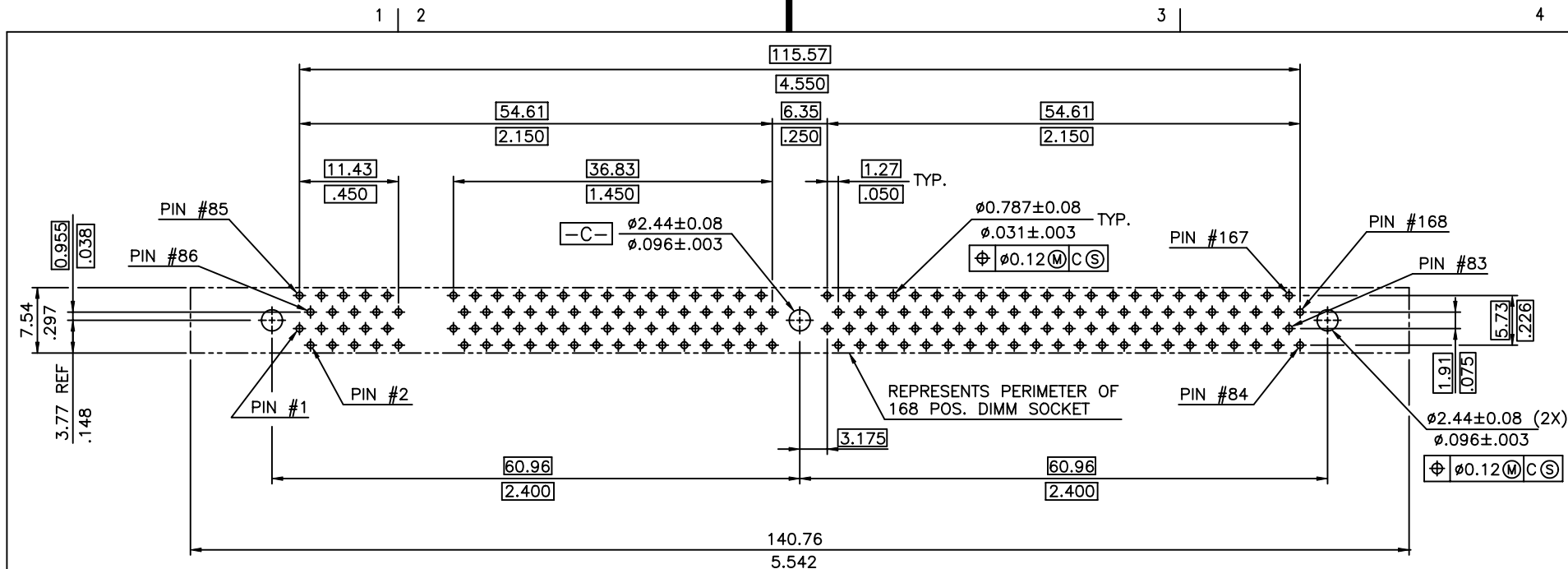


# RECOMMENDED MODULE LAYOUT



TYPE "R"	TYPE "C"	42.18 1.661	FOR UNBUFFERED DRAM, SYNCH DRAM, REGISTERED SDRAM, 3.3 VOLT.
TYPE "L"	TYPE "C"	44.18 1.739	FOR OPEN, 3.3 VOLT.
TYPE "C"	TYPE "C"	43.18 1.700	FOR STANDARD DRAM, BUFFERED 3.3 VOLT.
TYPE "R"	TYPE "L"	41.18 1.621	FOR NON-STANDARD DRAM, 5.0 VOLT.
TYPE "L"	TYPE "L"	43.18 1.700	FOR SYNC DRAM, 5.0 VOLT.
TYPE "C"	TYPE "L"	42.18 1.661	FOR STANDARD DRAM, 5.0 VOLT.
KEY POS. #1	KEY POS. #2	DIM. "A"	DESCRIPTION

mat'l. code				tolerances unless otherwise specified		CUSTOMER COPY		A FCI www.fciconnect.com	
ltr	ecn no	dr	date	linear	.X ± 0.38/.015	projection	title	DIMM 168P .050" 1-ROW, V/T ASS'Y METAL CLIP	
G				angles	.XX ± 0.25/.010 .XXX ± 0.15/.005 0° ±2°	MM	product family		
				dr	ANNY HUANG 05/26/97	scale	size	DIMM	
				enr	ANGE LIU 05/26/97	1.5:1	dwg no	73727	
				chr	ANGE LIU 05/26/97			sheet	
				appd	JENN TSAO 05/26/97			2 of	
sheet	revision								
index	sheet								



DIMM ASSEMBLY PART NUMBER  
73727 - □ □ □ □

## RECOMMENDED CIRCUIT BOARD HOLE LAYOUT

### STYLE

- 1 : FOR STANDARD DRAM, 5 VOLT.
- 2 : FOR SYNC DRAM, 5 VOLT.
- 3 : FOR NON-STANDARD DRAM, 5 VOLT.
- 4 : FOR STANDARD DRAM, BUFFERED, 3.3 VOLT.
- 5 : FOR OPEN, 3.3 VOLT.
- 6 : FOR UNBUFFERED DRAM, SYNCH DRAM, REGISTERED SDRAM, 3.3 VOLT.

### METAL CLIP

- 1 : WITH METAL CLIP + DIM."D"=4.00/.157.

### TAIL LENGTH

CODE	DIM. "B"	DIM. "C"
0	2.59 .102	2.44 .096
1	3.35 .132	3.20 .126

### PLATING

CODE	CONTACT	SOLDERTAIL	UNDERPLATE
2	15μ" (0.38μm) MIN. GOLD	100μ" (2.54μm) MIN. TIN/LEAD	50μ" (1.27μm) MIN. NICKEL OVERALL
3	30μ" (0.76μm) MIN. GOLD		
4	3μ" (0.076μm) MIN. GOLD		
5	GOLD FLASH OVER 15μ" (0.38μm) PdNi MIN.	100μ" (2.54μm) MIN. 100% TIN	50μ" (1.27μm) MIN. NICKEL OVERALL
7LF	15μ" (0.38μm) MIN. GOLD		
8LF	30μ" (0.76μm) MIN. GOLD		
9LF	3μ" (0.076μm) MIN. GOLD		

### COLOR OF HOUSING AND EJECTOR


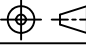
- 0 : BLACK HOUSING + IVORY EJECTOR
- 1 : IVORY HOUSING + BLACK EJECTOR
- 2 : IVORY HOUSING + IVORY EJECTOR
- 3 : BLACK HOUSING + NATURAL EJECTOR (HIGH TEMPERATURE NYLON)

mat'l. code				tolerances unless otherwise specified		CUSTOMER COPY		A FCI www.fciconnect.com	
ltr	ecn no	dr	date	linear	.X ± 0.38/.015	projection	title	DIMM 168P .050" 1-ROW, V/T ASS'Y METAL CLIP	
K				angles	.XX ± 0.25/.010 .XXX ± 0.15/.005	MM	product family		
				dr	ANNY HUANG 05/26/97	scale	size	DIMM	
				enrg	ANGE LIOU 05/26/97	1.5:1	dwg no	73727	
				chr	ANGE LIOU 05/26/97				
				appd	JENN TSAO 05/26/97				
sheet	revision								
index	sheet								

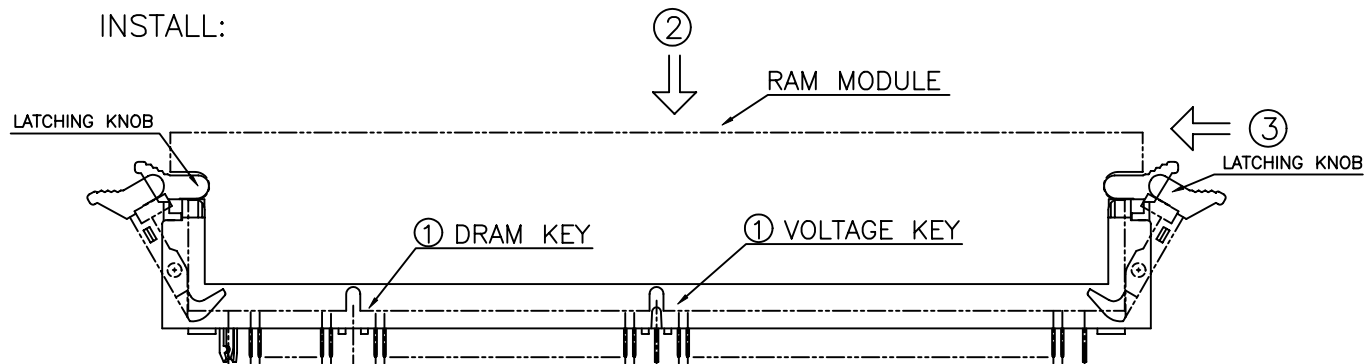
PROD. NO.	DIM."A"	DIM."B"	DIM."C"	DIM."D"	HOUSING COLOR	RESIN	EJECTOR COLOR	RESIN	STYLE	MARKING #2 STYLE	MARKING # STYLE					
73727-1100* 73727-1101* 73727-1102* 73727-1103*	42.18	2.59	2.44	4.0	BLACK	LCP	IVORY	LCP	FOR STANDARD DRAM, 5 VOLT.	STD	5.0					
73727-1110* 73727-1111* 73727-1112* 73727-1113*					3.35		3.20					BLACK	NATURAL	NYLON		
73727-2100* 73727-2101* 73727-2102* 73727-2103*												43.18	2.59	2.44	BLACK	IVORY
73727-2110* 73727-2111* 73727-2112* 73727-2113*								3.35							3.20	BLACK
73727-3100* 73727-3101* 73727-3102* 73727-3103*	41.18	2.59	2.44													BLACK
73727-3110* 73727-3111* 73727-3112* 73727-3113*					3.35		3.20									BLACK
73727-4100* 73727-4101* 73727-4102* 73727-4103*												43.18	2.59	2.44		BLACK
73727-4110* 73727-4111* 73727-4112* 73727-4113*								3.35							3.20	BLACK
73727-5100* 73727-5101* 73727-5102* 73727-5103*	44.18	2.59	2.44						BLACK	IVORY	LCP					
73727-5110* 73727-5111* 73727-5112* 73727-5113*					3.35		3.20		BLACK	NATURAL						NYLON
73727-6100* 73727-6101* 73727-6102* 73727-6103*									42.18	2.59		2.44	BLACK	IVORY		LCP
73727-6110* 73727-6111* 73727-6112* 73727-6113*								3.35			3.20		BLACK	NATURAL	NYLON	

REMARK: 1. PROD. NO. MARK "\*" SEE ABOVE PART NO. PLATING CODE DESCRIPTION.  
2. SEE DESCRIPTION UNDER PLATING FOR THE MARK "\*" IN THE COLUMN OF TERMINAL PART NO.  
3. SOME P/N ARE NOT AVAILABLE. AS BELOW :

73727-61002  
73727-61003  
73727-61007  
73727-61008  
73727-61102  
73727-61103

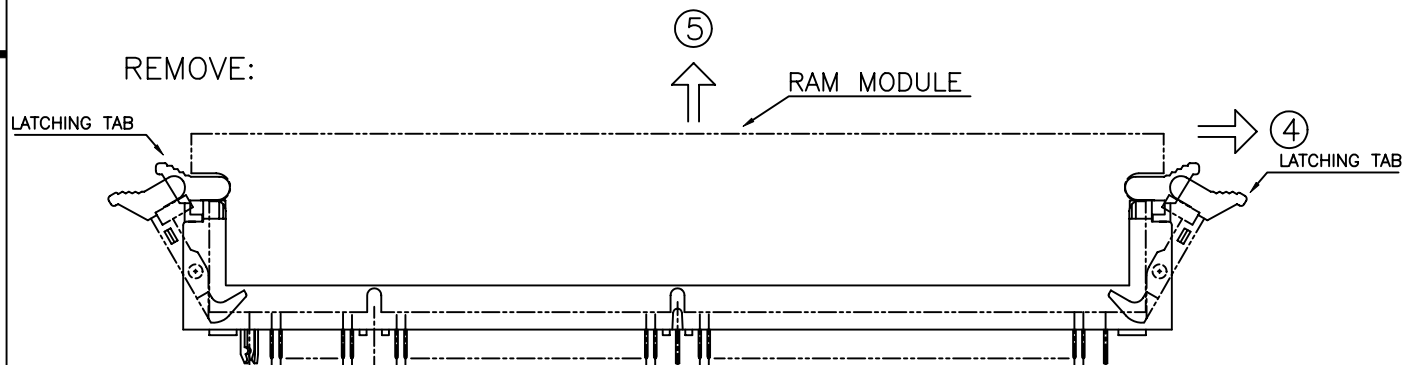
mat'l. code				tolerances unless otherwise specified		CUSTOMER COPY		 <b>FCI</b> <small>www.fciconnect.com</small>	
ltr	ecn no	dr	date	linear	.X ± 0.38/.015	projection 	title DIMM 168P .050" 1-ROW, V/T ASS'Y METAL CLIP	product family DIMM	code —
J					.XX ± 0.25/.010				
					.XXX ± 0.15/.005				
				angles	0° ±2°	MM ←→	scale 1:1	A4	sheet 4 of
				dr	ANNY HUANG 05/26/97				
				enrg	ANGE LIOU 05/26/97				
				chr	ANGE LIOU 05/26/97				
				appd	JENN TSAO 05/26/97				
sheet	revision								
index	sheet								

# INSTALL:


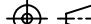


1. MAKE SURE THE NOTCHED KEY WAY ON THE RAM MODULE MATCH THE VOLTAGE AND DRAM KEY OF THE SOCKET.
2. INSERT THE RAM MODULE, IN A VERTICAL DIRECTION, INTO THE SOCKET, THEN PRESS IT FIRMLY TO MAKE SURE THE RAM MODULE SEATED APPROPRIATELY (TOUCH THE BOTTOM OF THE CARD SLOT).
3. PRESS THE RAM MODULE UNTIL IT LATCHED BY THE LATCHING KNOBS.

# REMOVE:



4. PRESS OUT ON THE LATCHING TABS AT BOTH EDGES OF THE SOCKET AT THE SAME TIME UNTIL THE RAM MODULE EJECTED.
5. WITHDRAW THE RAM MODULE FROM THE SOCKET.

mat'l. code				tolerances unless otherwise specified			CUSTOMER COPY		<div> www.fciconnect.com</div>		
ltr	ecn no	dr	date	linear	.X ± 0.38/.015			projection 	title DIMM 168P .050" 1-ROW, V/T ASS'Y METAL CLIP		
G					.XX ± 0.25/.010						
					.XXX ± 0.15/.005						
				angles	0° ±2°						
		dr	ANNY HUANG	05/26/97	<div>← MM →</div>			product family		DIMM	code
		engr	ANGE LIOU	05/26/97				size		dwg no	—
		chr	ANGE LIOU	05/26/97				scale		A4	73727
		appd	JENN TSAO	05/26/97							5 of
sheet index		revision sheet									