



Ordering number CA11663_HEIDI-RS

Family	Heidi	FWHM	7.5 degrees
Type	Lens	Efficiency	91 %
LED	LUXEON Rebel	cd/Im	25.600
Color	Transparent	Gerber File	Available
Diameter	21.6 mm		
Height	11.7 mm		
Style	Round		
Optic Material	PMMA		
Holder Material	-		
Fastening	Pin, tape		
Status	Ready		



Ordering number CA11267_HEIDI-O-90

Family	Heidi	FWHM	10+52 degrees
Type	Lens	Efficiency	84 %
LED	LUXEON Rebel	cd/Im	-
Color	Transparent	Gerber File	Available
Diameter	21.6 mm		
Height	11.7 mm		
Style	Round		
Optic Material	PMMA		
Holder Material	-		
Fastening	Pin, tape		
Status	Ready		



Ordering number CA11266_HEIDI-O

Family	Heidi	FWHM	11+52 degrees
Type	Lens	Efficiency	84 %
LED	LUXEON Rebel	cd/Im	3.660
Color	Transparent	Gerber File	Available
Diameter	21.6 mm		
Height	11.7 mm		
Style	Round		
Optic Material	PMMA		
Holder Material	-		
Fastening	Pin, tape		
Status	Ready		



Ordering number CA12242_HEIDI-SS

Family	Heidi	FWHM	13 degrees
Type	Lens	Efficiency	90 %
LED	LUXEON Rebel	cd/Im	7.960
Color	Transparent	Gerber File	Available
Diameter	21.6 mm		
Height	11.7 mm		
Style	Round		
Optic Material	PMMA		
Holder Material	-		
Fastening	Pin, tape		
Status	Ready		



Ordering number CA11265_HEIDI-M

Family	Heidi	FWHM	27 degrees
Type	Lens	Efficiency	90 %
LED	LUXEON Rebel	cd/Im	3.210
Color	Transparent	Gerber File	Available
Diameter	21.6 mm		
Height	11.7 mm		
Style	Round		
Optic Material	PMMA		
Holder Material	-		
Fastening	Pin, tape		
Status	Ready		



Ordering number CA11268_HEIDI-W

Family	Heidi	FWHM	31 degrees
Type	Lens	Efficiency	81 %
LED	LUXEON Rebel	cd/Im	2.630
Color	Transparent	Gerber File	Available
Diameter	21.6 mm		
Height	11.7 mm		
Style	Round		
Optic Material	PMMA		
Holder Material	-		
Fastening	Pin, tape		
Status	Ready		



Ordering number CA12079_HEIDI-W2

Family	Heidi	FWHM	49 degrees
Type	Lens	Efficiency	85 %
LED	LUXEON Rebel	cd/Im	0.966
Color	Transparent	Gerber File	Available
Diameter	21.6 mm		
Height	11.5 mm		
Style	Round		
Optic Material	PMMA		
Holder Material	-		
Fastening	Pin, tape		
Status	Ready		

Ordering number CA11264
Description CA11264-Heidi-D-RE

Family	Heidi	FWHM	10 degrees
Type	Lens	Efficiency	91 %
LED	LUXEON Rebel	cd/Im	13.800
Color	Transparent	Gerber File	Available
Diameter	21.6 mm		
Height	11.7 mm		
Style	Round		
Optic Material	PMMA		
Holder Material	-		
Fastening	Pin, tape		
Status	Ready		



PRODUCT DATASHEET

Heidi series

last update 28/12/2011



NOTE: The typical divergence will be changed by different color, chip size and chip position tolerance. The typical total divergence is the full angle measured where the luminous intensity is half of the peak value.



PRODUCT DATASHEET

Heidi series

last update 28/12/2011



GENERAL INFORMATION

- Product series especially designed & optimized for LUXEON Rebel series of LEDs.
- Special care taken to make light distribution as uniform as possible.
- Lens material optical grade PMMA with high UV and temperature resistance (105 degrees of Celcius / 220 degrees of Fahrenheit). Allows use of high current and temperature conditions.

Please find more information about used material from below:

http://ledil.fi/sites/default/files/Documents/Technical/Material/PMMA%20N%20UL94_Yellow%20Card.pdf

<http://ledil.fi/sites/default/files/Documents/Technical/Material/PMMA%20N%20PLEXIGLAS-Datasheet.pdf>

- Fastening to heat sink with a PU foam adhesive tape of automotive grade. Please find fastening details by clicking link: http://www.ledil.com/datasheets/DataSheet_TAPE.pdf

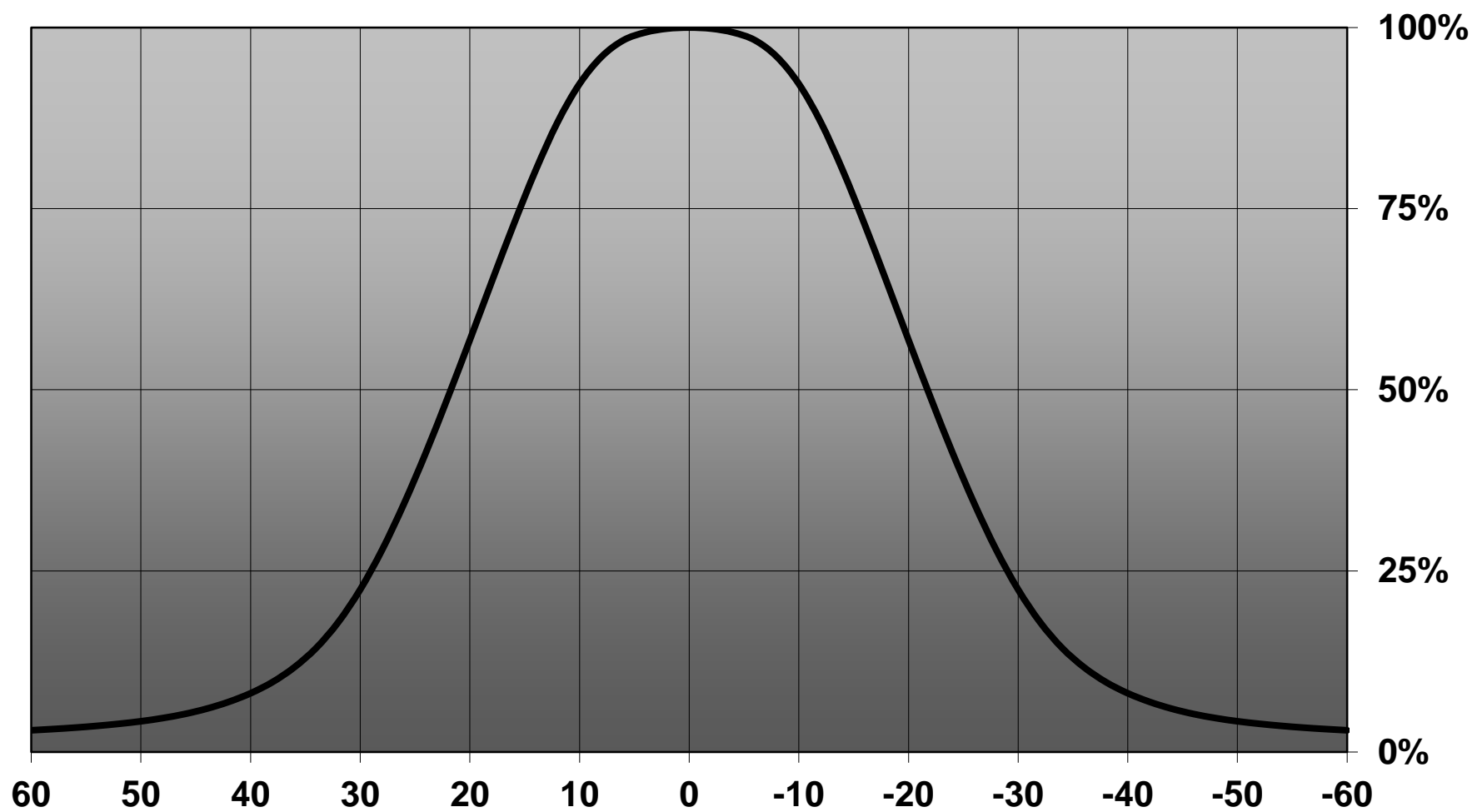
NOTE 1: We advise customer to ensure the suitability and sufficiency of the bond in the end product. For example, mechanical stress, vibration and holes on the surface of the circuit board weaken the strength of the tape.

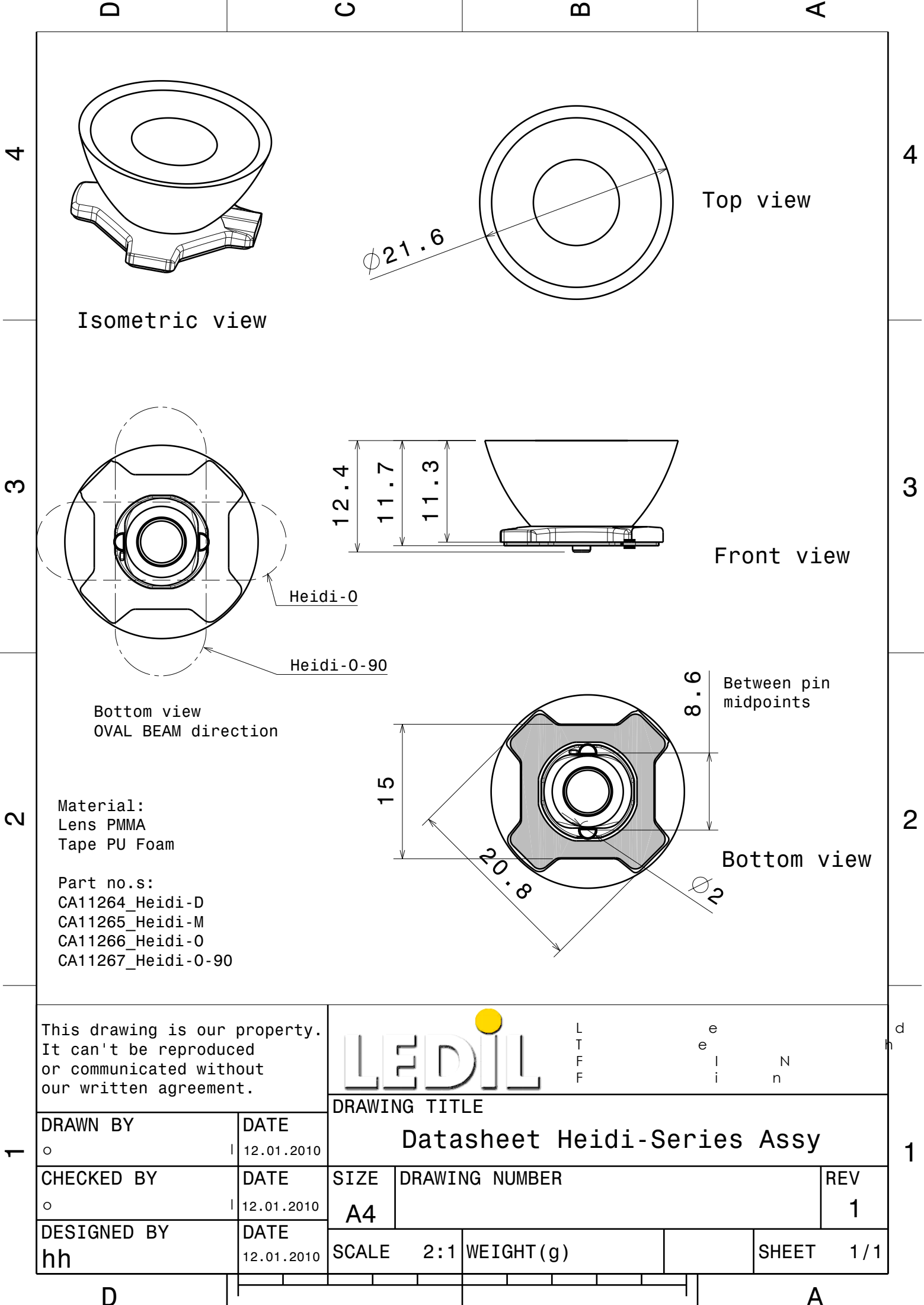
NOTE 2: Assembly to the surface must be made straight, so the tape bonds constant and balanced with fastening surface. Slanted assembly might cause unbalanced bond to the surface. All surfaces where tape is applied must be clean, dry and free from grease and dirt.

If cleaning of PCB surfaces is needed, please follow strictly the cleaning instructions of your LED manufacturer - this is important as cleaning shall under no circumstances damage LEDs or other electronics components on the PCB.

Further note that optical components shall not be cleaned with any chemicals - only micro fiber cloth may be used to remove fingerprints or other traces from handling.

Relative intensity of CA12079_Heidi-W2-XP-G





This drawing is our property.
It can't be reproduced
or communicated without
our written agreement.



L
T
F
F

e
e
l
i
n
n

d
h

DRAWING TITLE

Datasheet Heidi-Series Assy

DRAWN BY

o

DATE

12.01.2010

CHECKED BY

o

DATE

12.01.2010

DESIGNED BY

hh

DATE

12.01.2010

SIZE

A4

DRAWING NUMBER

REV

1

SCALE

2:1

WEIGHT (g)

SHEET

1/1

D

A