

Customer Information Sheet

DRAWING No.: S2711-XXR

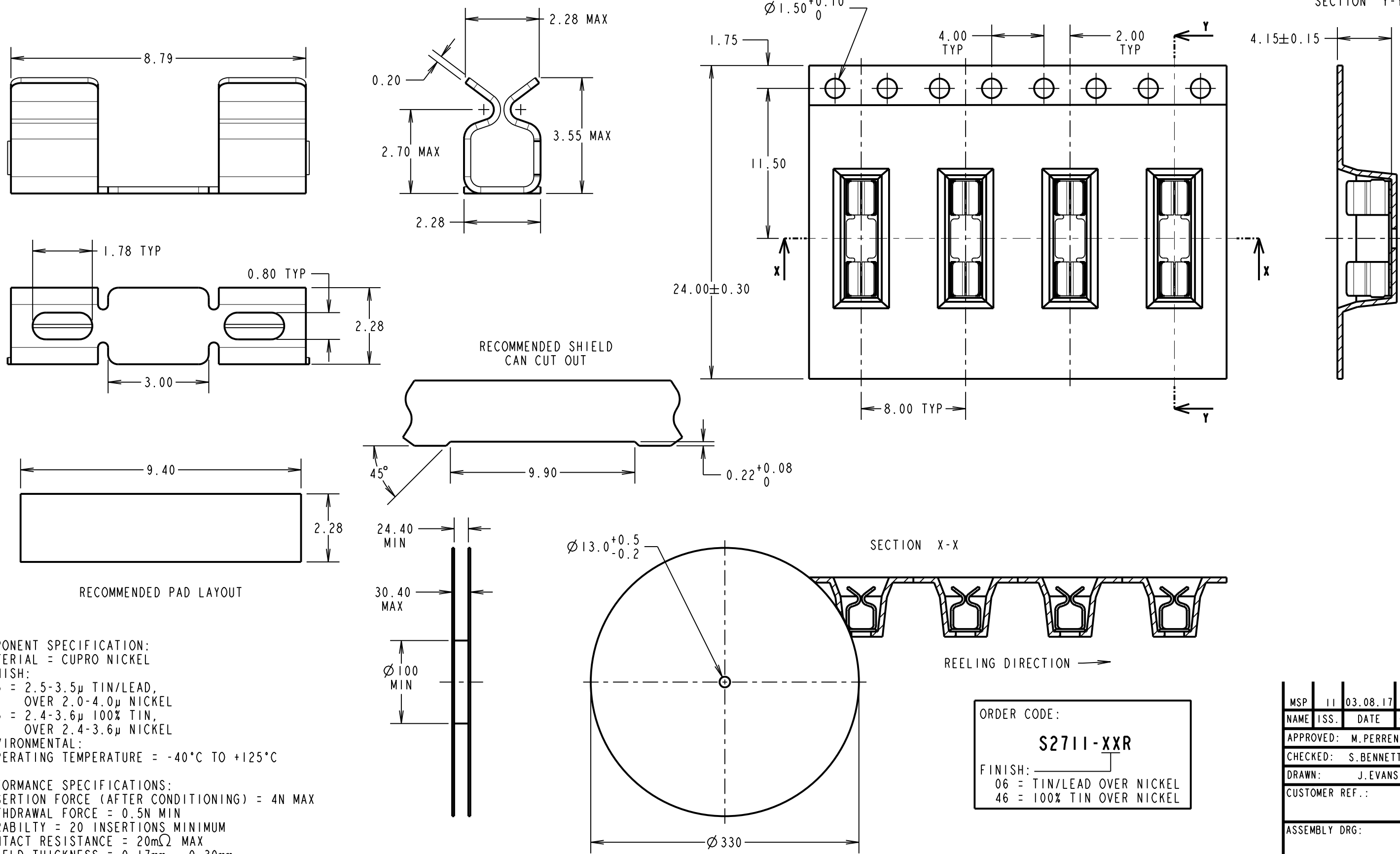
IF IN DOUBT - ASK

(C)

NOT TO SCALE

THIRD ANGLE PROJECTION

ALL DIMENSIONS IN mm



COMPONENT SPECIFICATION:
MATERIAL = CUPRO NICKEL
FINISH:
06 = 2.5-3.5µ TIN/LEAD,
OVER 2.0-4.0µ NICKEL
46 = 2.4-3.6µ 100% TIN,
OVER 2.4-3.6µ NICKEL
ENVIRONMENTAL:
OPERATING TEMPERATURE = -40°C TO +125°C

PERFORMANCE SPECIFICATIONS:
INSERTION FORCE (AFTER CONDITIONING) = 4N MAX
WITHDRAWAL FORCE = 0.5N MIN
DURABILITY = 20 INSERTIONS MINIMUM
CONTACT RESISTANCE = 20mΩ MAX
SHIELD THICKNESS = 0.17mm - 0.30mm

NOTES:
1. QUANTITY PER REEL = 1,900.
2. THIS PRODUCT IS TAPED AND REELED IN ACCORDANCE
WITH EIA-481 (ELECTRONIC INDUSTRIES ASSOCIATION).

HARWIN
www.harwin.com
technical@harwin.com

THIS DRAWING AND ANY
INFORMATION OR DESCRIPTIVE
MATTER SET OUT HEREON ARE
CONFIDENTIAL AND COPYRIGHT
PROPERTY OF THE HARWIN
GROUP AND MUST NOT BE
DISCLOSED, LOANED, COPIED
OR USED FOR MANUFACTURING,
TENDERING OR FOR ANY
OTHER PURPOSE WITHOUT
THEIR WRITTEN PERMISSION.

TOLERANCES
X. = ±1mm
X.X = ±0.25mm
X.XX = ±0.10mm
X.XXX = ±0.01mm
ANGLES = ±5°
UNLESS STATED

MATERIAL:
SEE ABOVE
FINISH: SEE ABOVE
S/AREA: mm²

TITLE: SMT RFI SHIELD CLIP
IN TAPE AND REEL
(CUPRO NICKEL)
DRAWING NUMBER:
S2711-XXR

ORDER CODE:
S2711-XXR
FINISH:
06 = TIN/LEAD OVER NICKEL
46 = 100% TIN OVER NICKEL

MSP	11	03.08.17	20719
NAME	ISS.	DATE	C/NOTE
APPROVED: M.PERREN			
CHECKED: S.BENNETT			
DRAWN: J.EVANS			
CUSTOMER REF.:			
ASSEMBLY DRG:			