

FEATURES

- Supports hybrid and monolithic components
- Drastically decreases thermal resistance, θ_{c-a}
- Improves hybrid performance and reliability
- Anodized aluminum construction
- Low cost

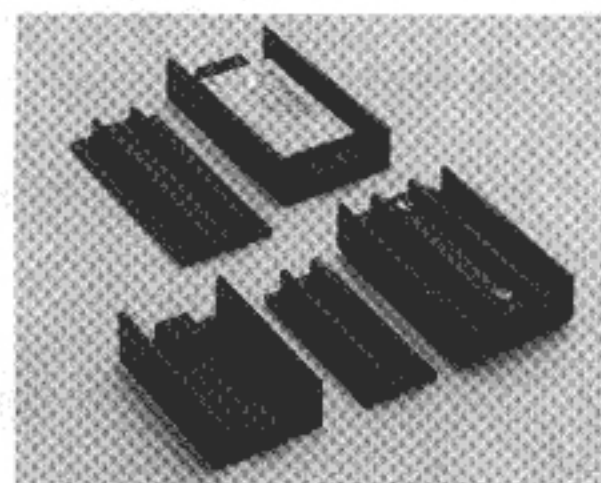
GENERAL DESCRIPTION

To further increase both the electrical performance and reliability of hybrid components, DATEL offers aluminum heat sinks for conventional 24-pin DDIP, 32-pin TDIP, and 40-pin TDIP packages.

The HS Series of heat sinks is suitable for use with both side- and bottom-brazed dual in-line packages. The heat sinks consist of a top and bottom part (cover and base) which enclose the package. A compressible, thermally-conductive silicone preform is used to seal the top and bottom components to the respective surfaces of the package, maximizing thermal contact. The HS-24, -32, and -40 heat sinks are designed for printed circuit board mounting.

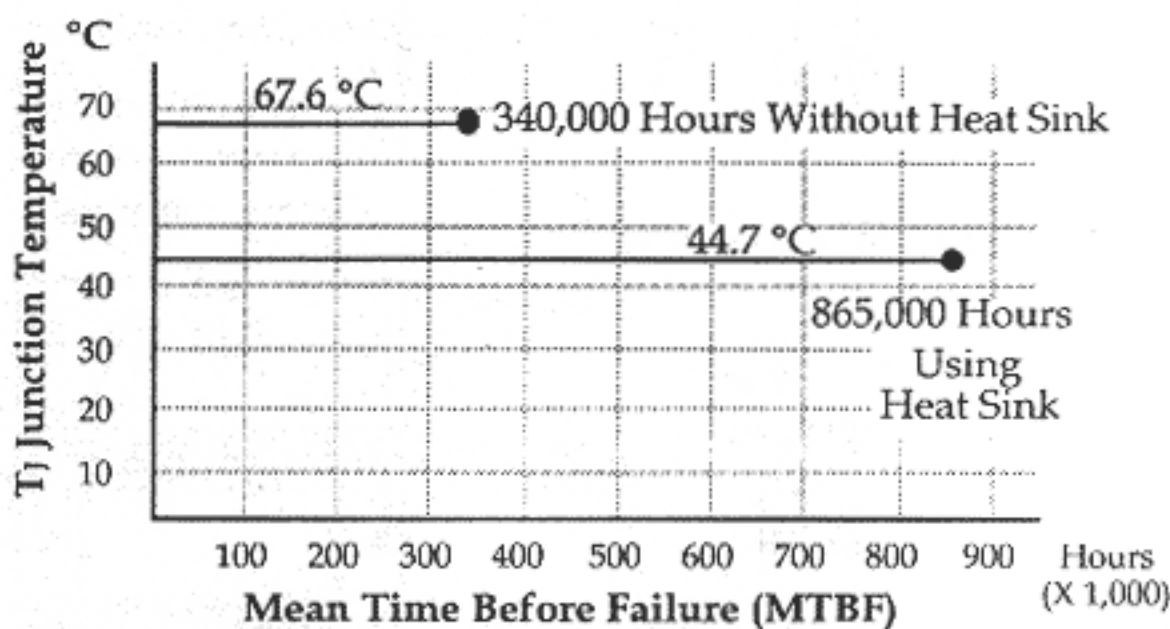
SPECIFICATIONS

| Package | θ_{c-a} (typ.) | Units |
|----------------------|-----------------------|----------------------|
| 24-pin without HS-24 | 23 | $^{\circ}\text{C/W}$ |
| 24-pin with HS-24 | 9 | $^{\circ}\text{C/W}$ |
| 32-pin without HS-32 | 18 | $^{\circ}\text{C/W}$ |
| 32-pin with HS-32 | 7 | $^{\circ}\text{C/W}$ |
| 40-pin without HS-40 | 17 | $^{\circ}\text{C/W}$ |
| 40-pin with HS-40 | 6 | $^{\circ}\text{C/W}$ |



The HS heat sinks are made of anodized aluminum which provides high levels of heat conduction and dissipation.

Performance improvements include a typical increase in MTBF of 250 percent and an average reduction in case temperature (T_c) of 35 percent. This corresponds to an average decrease in junction temperature of 30 percent.

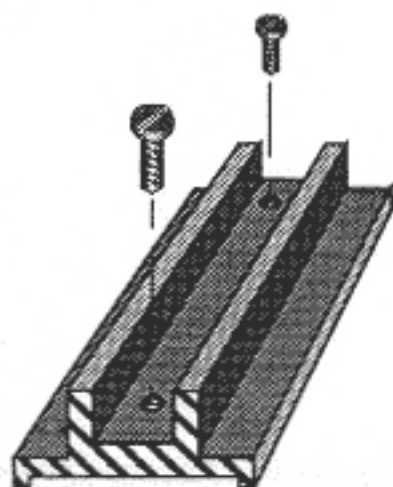


ORDERING INFORMATION

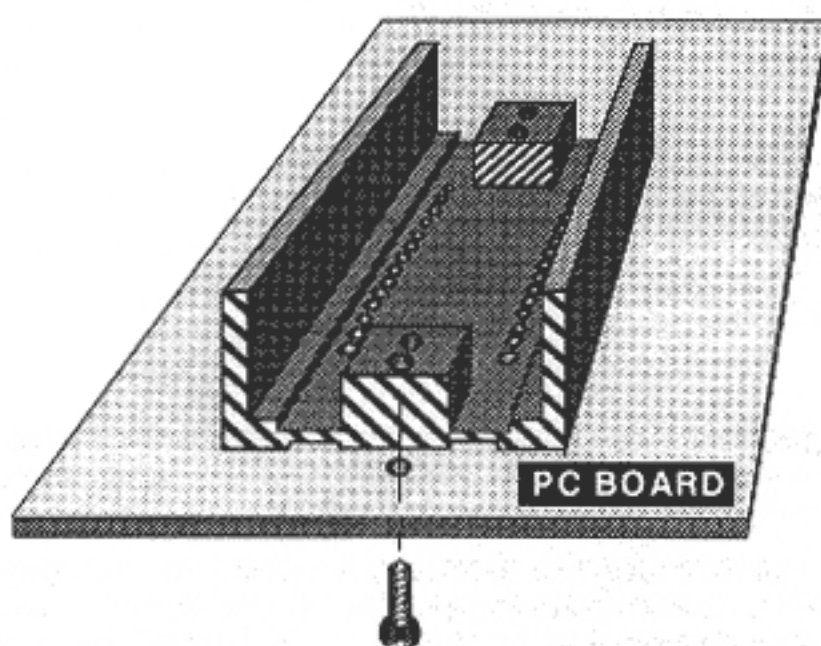
| Part Number | Package Type |
|-------------|--------------|
| HS-24 | 24-pin DDIP |
| HS-32 | 32-pin TDIP |
| HS-40 | 40-pin TDIP |

For additional information, request DATEL Application Note AN-8

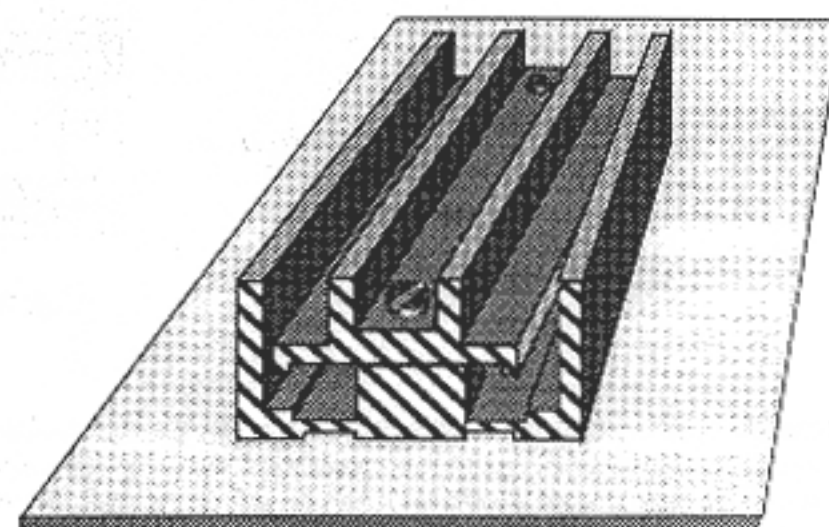
COVER

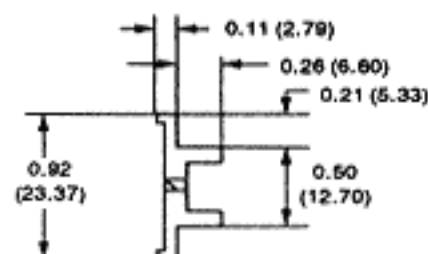


BASE

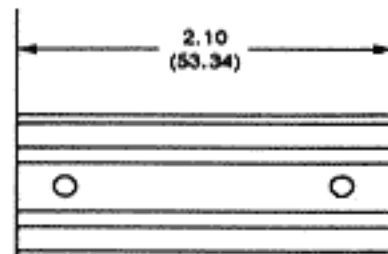


**ASSEMBLED
(DIP not Visible)**



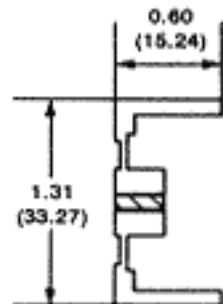


Cover, edge view

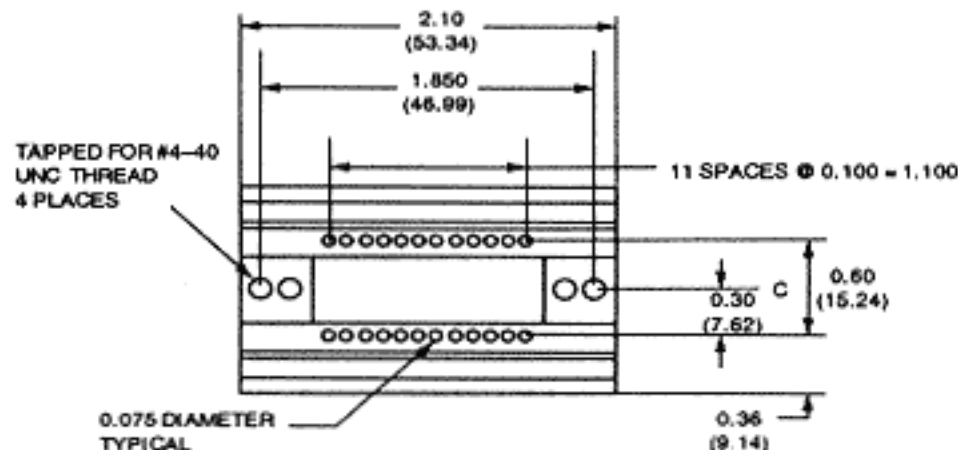


Cover, top view

MECHANICAL DIMENSIONS Inches (mm)

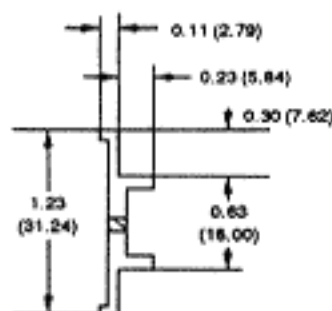


Base, edge view

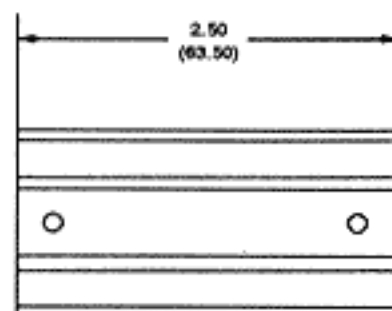


Base, top view

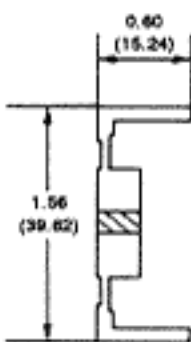
Heat Sink for 24-Pin DDIP Packages



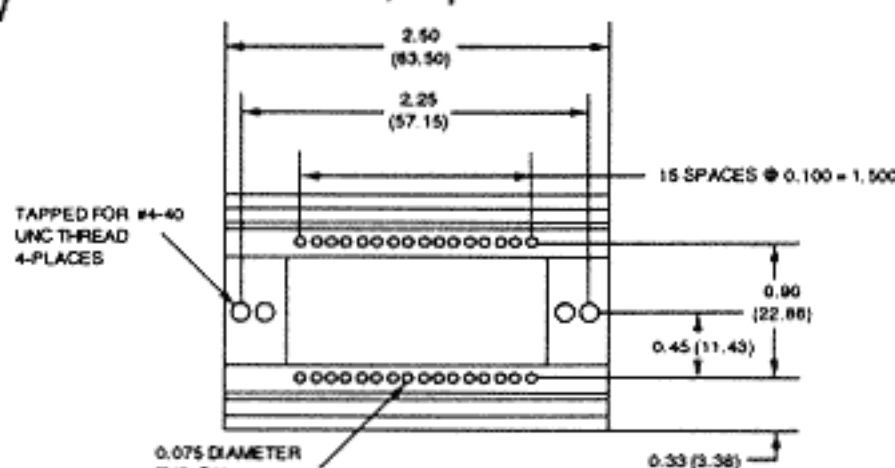
Cover, edge view



Cover, top view

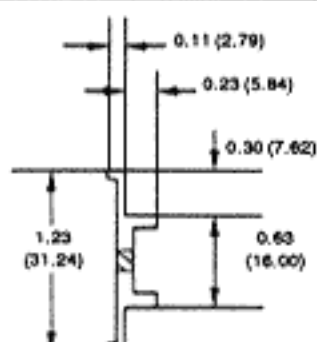


Base, edge view

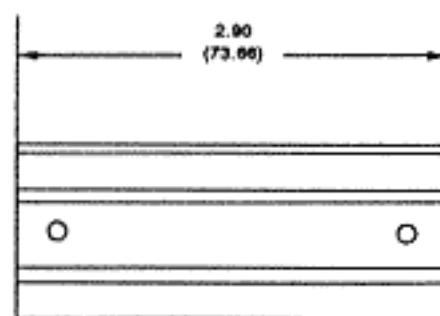


Base, top view

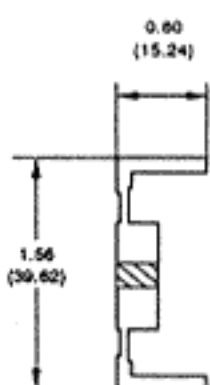
Heat Sink for 32-Pin TDIP Packages



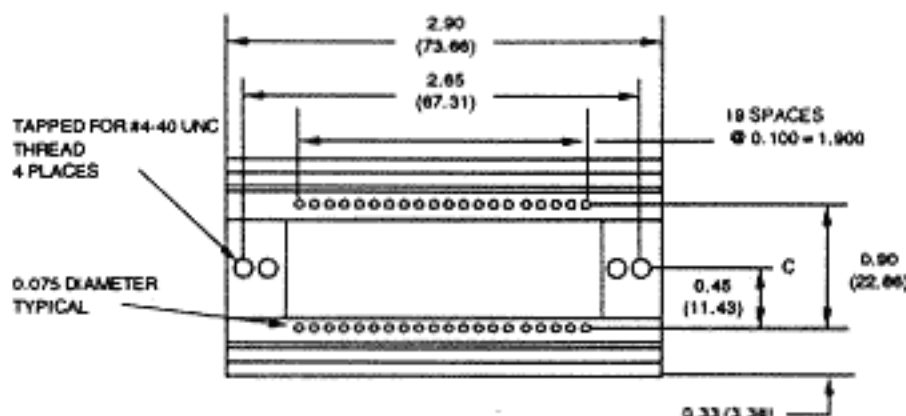
Cover, edge view



Cover, top view



Base, edge view



Base, top view

Heat Sink for 40-Pin TDIP Packages

DATEL makes no representation that the use of these products in the circuits described herein, or use of other technical information contained herein, will not infringe upon existing or future patent rights nor do the descriptions contained herein imply the granting of licenses to make, use, or sell equipment constructed in accordance therewith. Specifications subject to change without notice.



DATEL, Inc.
INTERNATIONAL:

11 CABOT BOULEVARD, MANSFIELD, MA 02048-1194 TEL. (508) 339-3000 / FAX (508) 339-6356
DATEL (UNITED KINGDOM) Basingstoke Tel. (256) 88.04.44 • DATEL (FRANCE) Tel. (1) 3460.0101
DATEL (GERMANY) Tel. (89) 53-0741 • DATEL (JAPAN) Tokyo Tel. (3) 779-1031 • Osaka Tel. (6) 354-2025

For Applications Assistance, dial 1-800-233-2765, 8:30 a.m. to 4:30 p.m. EST

For Western Region Technical Support, dial 1-800-452-0719, 8:30 a.m. to 5 p.m. PST

Printed in U.S.A. © Copyright 1992 DATEL, Inc. All Rights Reserved

DS-0201A

AG/BJ/JM

Mouser Electronics

Authorized Distributor

Click to View Pricing, Inventory, Delivery & Lifecycle Information:

[Murata:](#)

[HS-24C](#)