

# CorDEX

## INSTRUMENTS

SAFER | FASTER | BETTER

## Product Catalogue

Spring 2012



Intrinsic Safety

Ultrasonic | Laser Distance | Digital Camera

## Contents

### Digital Cameras

ToughPIX 2301XP	p4
ToughPIX 2302XP	p5
ToughPIX 2303XP	p6
ToughPIX 2304XP	p7

### Ultrasonic Thickness Gauges

UT5000	p8
--------	----

### Laser Distance Meters

LaserMETER 3000XP	p10
-------------------	-----

### Accessories

XP Series Battery Pack	p11
XP Series Replacement Fuse Kit	p11
XP Series Power Supply	p12
XP Series Battery Fixing Kit	p12
XP Series Charging Station	p13
XP Series Leather Harness	p13
XP Series Replacement USB Plug	p14
XP Series USB Communication Wand	p14
XP Series Optical accessory kit	p15
XP Series Leather Holster	p15
Ultrasonic Couplant Gel	p16
ATEX Certified RFID Tags	p16
Spare Dual Element Transducer	p17
Refresh Kit	p17

### Software

CorDEX CONNECT™ Predictive Maintenance System	p18
CAMS CorDEX Asset Management Software	p18

### Contact Info

Find your International contact	p19
---------------------------------	-----

### Contact Us

#### United Kingdom

General product & sales information

Tel: +44(0)1642 454373

Email: sales@cord-ex.com

#### United States

General product & sales information

Tel: 1-877-836-0764

Email: us.sales@cord-ex.com

### Protection Key

Use these icons to identify the protection concepts used in your instrument.



Intrinsically safe device, power controlled to prevent sparks.



Flameproof device, gas expansion controlled to prevent explosions.



Encapsulated device sparks controlled by removing gas/oxygen using compound.

### More CorDEX Info Online

- » Latest products
- » Application guides
- » Firmware updates
- » Online training
- » Where to buy

[www.cordexinstruments.com](http://www.cordexinstruments.com)

Spring 2012

CorDEX Instruments Ltd, an ISO 9001:2008 certified manufacturer of high quality hand-held inspection & NDT devices for use within hazardous (potentially explosive) environments.

With in-house design capability, all products are manufactured in line with a BS EN13980:2002 registered manufacturing system, ensuring the utmost quality and repeatability.

Our ever expanding global distribution network along with continual investment in research & development of new, innovative safety products ensures CorDEX Instruments are positioned to become the premier manufacturer of hand-held explosive area equipment and accessories.



## Education & Training



CorDEX Instruments is focused on the advancement in education services to the Oil & Gas, Manufacturing, Engineering and petrochemical industries.

Through educational programmes and support, CorDEX Instruments are helping to enhance both individual and company workplace understanding of the hazardous areas in which they work and provide them with the knowledge of products that will help to keep them safe.

## Training



CorDEX Instruments will be setting up a new online training centre where you can learn about hazardous areas, products and their roles and the technology behind them.

With a 'Self-paced' tutorial structure it allows you to learn and watch the tutorials, when it suits you.

Look out for the New 'Training' section on the CorDEX Instruments Website.

## Follow Us...



For the latest products, news, videos and applications, or if you just want to know where we are and what we are doing, check us out on any of the above.

# ToughPIX 2301XP Digital Camera

ATEX Certified for Zone 1, IIC T4 areas



For Class I, Div.1 Certified versions of ToughPIX digital camera see page 7.

## Specifications

ATEX Certificate No:	Sira 08ATEX1293X
ATEX Certificate Type:	0518 II 2 G / Ex d IIC T4 Gb
Ambient Temperature:	Tamb -20C to +50C
Image download	High Speed USB (safe area only)
Memory capacity	4GB
Standard image capture resolution	5 Megapixel
Zoom	Up to 6x zoom
Screen size	2.4 inches
Additional Features	Red-eye reduction
Tripod mount	1/4 inch 20 TPI
Body Material	Anodised aluminium with anti-static over mould
Lens & LCD Material	Armoured Glass
Weight	1.5kg
IP	54
Battery type	Removable & Rechargeable
Capacity	1100mAh
Cell type	NiMH

## Description

The **ToughPIX 2301XP** explosion proof digital camera enables documentation of equipment and processes within potentially explosive areas quickly and easily, its large easy access controls also allow operation when wearing protective clothing. The ToughPIX 2301XP incorporates an onboard, fully automatic strobe flash for image capture in extreme, low light situations. These still and moving images can be easily reviewed within the hazardous area on the armoured LCD screen.

## Features

The ToughPIX 2301XP is packed with the following features;

- » ATEX Certified for use in Zone 1 IIC T4 hazardous areas.
- » Tough, industrial grade design.
- » Full strobe flash for low light work.
- » Removable/Rechargeable battery pack.
- » 6x digital zoom.
- » 4GB of onboard memory.
- » CAMS asset management & reporting software.

## Supplied with

- » Hard Carry Case
- » Battery Pack
- » Battery Removal Tool
- » USB Communication Wand
- » Power Supply
- » Charging Station
- » Wrist Strap
- » 2 x Spare Fuses
- » CAMS Software Licence
- » Documentation CD

# ToughPIX 2302XP Digital Camera

ATEX Certified for mining (M2) applications



For Class I, Div.1 Certified versions of ToughPIX digital camera see page 7.

## Description

The **ToughPIX 2302XP** explosion proof digital camera is the ultimate tool for mining professionals, allowing documentation of equipment and processes within a mining environment, its large access controls also allow operation when wearing protective clothing. The ToughPIX 2302XP incorporates an onboard, fully automatic strobe flash for image capture in extreme, low light situations. These captured images can be viewed for clarity and content quickly and easily in the hazardous area on the armoured LCD screen.

## Features

The ToughPIX 2302XP is packed with the following features;

- » ATEX Certified for use in I M2 / Ex d I Mb hazardous areas.
- » Tough, industrial grade design.
- » Full strobe flash for low light work.
- » Removable/Rechargeable battery pack.
- » 6x digital zoom.
- » 4GB of onboard memory.
- » CAMS asset management & reporting software.

## Supplied with

- » Hard Carry Case
- » Battery Pack
- » Battery Removal Tool
- » USB Communication Wand
- » Power Supply
- » Charging Station
- » Wrist Strap
- » 2 x Spare Fuses
- » CAMS Software Licence
- » Documentation CD

Specifications	
ATEX Certificate No:	Sira 08ATEX1293X
ATEX Certificate Type:	0518 I M2 / Ex d I Mb
Ambient Temperature:	Tamb -20C to +50C
Image download	High Speed USB (safe area only)
Memory capacity	4GB
Standard image capture resolution	5 Megapixel
Zoom	Up to 6x zoom
Screen size	2.4 inches
Additional Features	Red-eye reduction
Tripod mount	1/4 inch 20 TPI
Body Material	Anodised aluminium with anti-static over mould
Lens & LCD Material	Armoured Glass
Weight	1.5kg
IP	54
Battery type	Removable & Rechargeable
Capacity	1100mAh
Cell type	NiMH

# ToughPIX 2303XP Digital Camera

ATEX Certified for gas & mining applications



For Class I, Div.1 Certified versions of ToughPIX digital camera see page 7.

## Specifications

ATEX Certificate No:	Sira 08ATEX1293X
ATEX Certificate Type:	0518 I/II 2/M2 G / Ex d I Mb Ex d IIC T4 Gb
Ambient Temperature:	Tamb -20C to +50C
Image download	High Speed USB (safe area only)
Memory capacity	8GB
Standard image capture resolution	5 Megapixel
Zoom	Up to 6x zoom
Screen size	2.4 inches
Additional Features	Red-eye reduction
Tripod mount	1/4 inch 20 TPI
Body Material	Anodised aluminium with anti-static over mould
Lens & LCD Material	Armoured Glass
Lens kit	37mm combination macro 0.45 wide angle lens AF
Weight	1.5kg
IP	54
Battery type	Removable & Rechargeable
Capacity	1100mAh
Cell type	NiMH

## Description

The **ToughPIX 2303XP** explosion proof digital camera is designed with the professional inspector in mind. Certified for use in hazardous areas both above and below ground, the ToughPIX 2303XP is also supplied with macro & wide angle lens for close up and wide area photography. With the addition of the removable low intensity LED lamp makes this the ultimate image capturing tool for hazardous areas.

## Features

The ToughPIX 2303XP is packed with the following features;

- » ATEX Certified for use above & below ground hazardous areas.
- » Tough, industrial grade design.
- » Macro facility for close up imagery.
- » Removable/Rechargeable battery pack.
- » 6x digital zoom.
- » 8GB of onboard memory.
- » CAMS asset management & reporting software.

## Supplied with

- » Hard Carry Case
- » Battery Pack
- » Battery Removal Tool
- » USB Communication Wand
- » Power Supply
- » Charging Station
- » Wrist Strap
- » 2 x Spare Fuses
- » CAMS Software Licence
- » Optical Accessory Kit
- » Documentation CD

# ToughPIX 2304XP Digital Camera

CSA Certified - Explosion proof Digital Camera



For ATEX Certified versions of ToughPIX digital camera see pages 4 through 6.

## Specifications

CSA Certificate No	Class I Div 1 B,C,D (CSA)
CSA Certificate Type	Class I, Div.1, Groups B, C & D
Ambient Temperature	Tamb -4° F to +122° F
Image download	High Speed USB (safe area only)
Image storage	4GB or 8GB
Standard image capture resolution	5 Megapixel
Zoom	Up to 6x Zoom
Screen size	2.4 inches
Additional Features	Red-eye reduction
Tripod mount	1/4 inch 20 TPI
Body Material	Anodised aluminium with anti-static over mould
Lens & LCD Material	Armoured Glass
Weight	3.3lbs
Ingress Protection	NEMA 3R
Battery type	Removable & Rechargeable
Capacity	1100mAh
Cell type	NiMH



Download the **Weatherford Case Study** to read more about how the ToughPIX 2300XP Series can be used in hazardous areas.

Download here: [www.cordexinstruments.com/TGH6](http://www.cordexinstruments.com/TGH6)

## Description

The **ToughPIX 2304XP** explosion proof handheld digital camera is the ultimate tool for digital photography and is designated Class I Div 1 hazardous (explosive) areas. Incorporating features usually found in high end digital SLR cameras, the ToughPIX 2304XP provides petrochemical professionals with the ability to take high quality still and moving images of plant quickly and safely.

## Features

A fully featured handheld digital camera, the ToughPIX 2304XP is supplied as standard with the following;

- » CSA Certified for use in Class I Div 1 hazardous areas.
- » Interchangeable standard, macro and wide angle lenses.
- » Upto 8GB onboard memory.
- » Full colour LCD display.
- » Flash and lamp for low light work.
- » CAMS database reporting software.

## Supplied with

- » Hard Carry Case
- » Battery Pack
- » Battery Removal Tool
- » USB Communication Wand
- » Power Supply
- » Charging Station
- » Wrist Strap
- » 2 x Spare Fuses
- » CAMS Software Licence
- » Optical Accessory Kit (8GB only)
- » Documentation CD

## ATEX and IECEx Certified – Intrinsically Safe Thickness Gauge



### Specifications

ATEX Certificate No:	Baseefa11ATEX0114
IECEx Certificate No:	IECEx BAS 11.0094
ATEX/IECEx Certificate Type:	II 2 G Ex ib IIC T4 Gb
Memory	Stores up to 1000 measurements
Screen	8cm (3.1inch) RGB TFT colour screen with backlight Right/left handed set up
Material Velocity Selection	Preloaded via Drop-Down menu, or user defined
Transducer	Dual Element
Pulse Rate	Standard transmit pulse rate of 4Hz Adjustable from single shot up to 8Hz
Receiver Bandwidth	1MHz to 15MHz (-3dB points)
Frequency	4MHz, 3mm up to 100mm (0.02in to 3.9in)
Accuracy	+/- 0.05mm (0.002in)
RFID Tag Reader	» Operates with 13.56MHz passive tags » Detection range up to 5cm (1.9in) » Supports ISO/IEC15693-2, ISO/IEC18000-3 tag formats
Battery Details	» Lithium thionyl chloride primary 3.6V cell » 100 hours continuous operation with back light restrictions low battery warning
Operating Temperature	-10 to +50C (14°F to 122°F)
Weight	1Kg (2.2lb)

### Description

The **UT5000** Intrinsically Safe thickness gauge with CorDEX CONNECT™ measures material thickness for Non-Destructive Testing (NDT) and Predictive Maintenance (Pdm) on pipelines, storage tanks and fixed equipment within hazardous locations.

### Features

- » Troubleshoot problems immediately with no hot work permit required.
- » ATEX & IECEx Certified Zone 1 IIC T4.
- » Built in RFID tag reader, link your measurements to the location.
- » All parameters at a glance with the backlit, full colour LCD screen.
- » Continuous measurement mode to highlight corrosion and thinning.
- » MultiECHO™ technology to eliminate irregular echoes.
- » Displays measurements in Imperial or Metric units.
- » CorDEX CONNECT predictive maintenance system supplied as standard.
- » Pre-loaded material velocity table.

### Supplied with

- » Hard Carry Case
- » 1 x Dual Element Transducer
- » USB Communication Wand
- » 1 x Couplant Gel
- » Battery Pack
- » 2 x Wrist Strap
- » 5 x ATEX RFID Tags
- » CorDEX CONNECT™ Licence
- » Documentation CD

# UT5000

## ATEX and IECEx Certified – Intrinsically Safe Thickness Gauge

Built in RFID Reader – This built-in reader will scan 13.56MHz passive tags designed for hazardous and non-hazardous areas.

Large easy access keypad for use with PPE clothing.

Keypad set-up allows for right or left handed orientation of the menu structure.

Smart Power Management mode – can be set to turn off when no user activity has been detected for a specified period of time.

Shock-resistant skin that helps to protect the UT5000 from accidental falls/knocks.

Minimum, maximum and average measurements shown when in corrosion mode.

Programmable warning alarms for minimum and maximum measurements against RFID tags.

Clear battery level indicator.

3.1inch, RGB TFT colour screen with backlight.

Preset/Editable velocity tables come as standard with the UT5000.

Use CorDEX CONNECT™ or the Mini App to add/edit material data on the device.

Built-in zero calibration disc.



# LaserMETER 3000XP

ATEX, IECEx & CSA Certified -  
Explosion proof laser distance meter



## Specifications

ATEX Certificate No:	Sira 10ATEX1283X
IECEx Certificate No:	IECEx SIR 10.0133X
ATEX/IECEx Certificate Type:	I/II M2/2 G Ex d I/IIC T4
CSA Certificate No:	2379424
CSA Certificate Type:	Class I Div.1 Groups B, C, D
Ambient Temperature:	Tamb -20C to +50C (-4F to + 122F)
Range	0.5m to 30m (1.6ft to 118ft)
Measuring Accuracy	Typically: 3mm (0.01in)
Measurement Unit Displayed	1mm (0.03in)
Laser Type/ Class	635nm, <1 mW, II
Acc	IEC 60825-1 : 2001
Body/ Lens and LCD	Cast Aluminium chassis with anti-static over mould/ Toughened Safety Glass
Emitted Wavelength	620-690nm
IP	65
Weight	<1kg (<2.2lbs)
Dimensions	140L x 130H x 75W mm (5.5 x 5.1 x 2.9 in)
Functions	Pythagoras, Volume, Area
Battery type	Rechargeable
Capacity	1100mAh
Cell type	NiMH

## Description

**LaserMETER 3000XP** explosion proof laser distance meter designed for use in hazardous (explosive) areas. With its rugged IP65 design, and on-board mathematics it is the ultimate hazardous area distance measurement tool.

The LaserMETER 3000XP can offer you speed, accuracy, safety, versatility, convenience and functionality in comparison to traditional measuring methods.

## Features

- » ATEX & IECEx Certified I/II M2/2 G Ex d I/IIC T4.
- » CSA Certified Class I, Div.1 B,C,D.
- » Use in all conditions with a clear backlit LCD screen.
- » Single or continuous measurement.
- » Pythagoras, area and volume calculations.
- » Interchangeable/rechargeable battery.
- » Displays measurements in Imperial or Metric units.

## Supplied with

- » Battery Pack
- » Battery Removal Tool
- » Power Supply
- » Charging Station
- » Wrist Strap
- » Documentation CD

## XP Series Battery Pack



### Description

The CorDEX Instruments **XP Series Battery Pack** incorporates stable nickel-metal hydride (NiMH) power cells and integral protection (required by ATEX) for maximum quality lifespan and safety. A removable fuse protects against short circuit overload and prevents battery damage.

### Features

Standard 1100mAh NiMH battery pack for the ToughPIX 2300XP series digital cameras. Incorporates reverse charging and over current protection via replaceable fuse.

- m High capacity 1100mAh NiMH cells incorporating inbuilt protection.
- m Replaceable short circuit protection fuse.
- m Casing manufactured from anodised aluminium.
- m Full UK-based support.

### Specifications

Part No	CDX2341-008
Capacity	1100mAh
Voltage	3V nominal
Recharge	DV
For use with	» ToughPIX 2300XP Series » LaserMETER 3000XP » Centurion XP series

## XP Series Replacement Fuse Kit



### Description

Pack of 10, fuses to replace the over current protection fuse built into the XP series battery pack.

### Features

The XP series battery packs incorporate a matched, replaceable fuse covered by ATEX certification.

- m 10 replacement fuses.
- m Fuse replacement tool.

### Specifications

Part No (1.5A)	XP-326-121
Part No (1.25A)	XP-326-120
Part No (1A)	XP-326-115
Kit Contains	» 10 matched fuses for CorDEX Battery Packs » Fuse replacement tool
For use with	» ToughPIX 2300XP Series » LaserMETER 3000XP » Centurion XP series

## XP Series Power Supply



### Description

The **CDX2341-130 battery charger** uses multi-stage charging technology to reduce overall charge time whilst providing continuing trickle charge for continuous top-up without battery damage. The XP series battery packs must be charged correctly to avoid protection system activation or cell damage.

### Features

- » Multi-stage charging capability.
- » LED indication of charge status.
- » UK, US, EU & AU adapters supplied as standard.

### Specifications

Model	CDX2341-130
Indication	LED
Charge type	Multi-stage
Weight	0.52kg (1.15lb)
For use with	<ul style="list-style-type: none"> <li>» ToughPIX 2300XP Series</li> <li>» LaserMETER 3000XP</li> <li>» Centurion XP series</li> </ul>

## XP Series Battery Fixing Kit



### Description

These stainless steel, high strength fixings can be used to replace those supplied to secured the battery to the camera body.

### Features

- » 1 complete set of securing screws required to hold the battery pack in place.
- » Removal/replacement tool.

**IMPORTANT SAFETY NOTICE:** Only remove the CorDEX Battery Packs in a non-hazardous area. Only use CorDEX Instruments fixings to secure the battery to the camera.

### Specifications

Part No	XP-325
Supplied with	<ul style="list-style-type: none"> <li>» 6 x M4 A2 Stainless steel bolts</li> <li>» Removal/replacement tool</li> </ul>
For use with	<ul style="list-style-type: none"> <li>» ToughPIX 2300XP Series</li> <li>» LaserMETER 3000XP</li> <li>» Centurion XP series</li> </ul>

## XP Series Charging Station



### Description

All ToughPIX 2300XP series cameras are supplied with a charging station and power supply as standard. Purchase an additional battery pack charging station to charge additional backup batteries (Part No. CDX2341-008).

*(Battery NOT included)*

### Features

- » Single-bay battery charger can be desk or wall mounted.
- » Supplied complete with a power supply and the following adaptors: UK, US, EU & AU.

**IMPORTANT SAFETY NOTICE:** The battery charger must not be used in a hazardous area. Only use CorDEX Battery Packs. The charging station is not suitable for charging other battery types.

### Specifications

Part No	XP-323
Weight	0.125kg (0.275lb)
Overall dimensions	46 x 93 x 108mm (1.8 x 3.7 x 4.2inches)
For use with	<ul style="list-style-type: none"> <li>» ToughPIX 2300XP Series</li> <li>» LaserMETER 3000XP</li> <li>» Centurion XP series</li> </ul>

## XP Series Leather Harness



### Description

The **CorDEX Instruments XP series leather harness** is a safety accessory for when using your XP series camera at height or for long periods of time.

### Specifications

Model	XP-330
For use with	<ul style="list-style-type: none"> <li>» ToughPIX 2300XP Series</li> <li>» Centurion XP series</li> </ul>

## XP Series Replacement USB Plug



### Description

The **CorDEX XP Series USB plug** is designed for use with the ToughPIX 2300XP Series and Centurion XP series digital cameras. Each camera is supplied as standard with a USB plug.

**IMPORTANT SAFETY NOTICE:** This product **MUST** have the USB plug inserted into the camera whilst in Hazardous (potentially explosive) atmospheres. If this plug is not in place the device will not be deemed certified and will leave the end user liable.

### Specifications

Part No	CDX2341-166
For use with	» ToughPIX 2300XP Series » Centurion XP series

## XP Series USB Communication Wand



### Description

The **XP series USB communication wand** provides high speed USB communication and has been tested to operate effectively with XP Series Digital Cameras.

**IMPORTANT SAFETY NOTICE:** Only communicate with a XP digital camera in a non-hazardous area.

### Specifications

Part No	XP-322
Weight	0.23kg (0.51lb)
Length	60cm (23.6in)
For use with	» ToughPIX 2300XP Series » Centurion XP series

## XP Series - Optical accessory kit



### Description

The **XP Series Optical Accessory Kit** extends the capability of the standard camera by offering both a close up (macro) lens able to focus 50mm-100mm from an object and a 45 Degree Wide Angle lens.

The macro lens enables crystal clear images of small objects such as serial numbers or rating plates and the wide angle lens offers a single image view of large scenes from restricted areas such as offshore platforms.

### Features

- » Capture crystal clear digital images at distances of between 50mm-100mm with the macro lens.
- » Wide-angle lens increases the camera's angle of view by 0.45 times.
- » Features a low intensity certified LED lamp designed for both close up images and movie capture.

### Specifications

Part No	XP-350
Macro lens Specification	37mm combination macro
Wide-angle lens Specification	0.45 wide angle lens AF
For use with	» ToughPIX 2300XP Series » Centurion XP series

## XP Series Leather Holster



### Description

The **CorDEX Instruments XP series leather holster** is a design that allows you to support the full weight of your camera in a protective cover, and is ideal for carrying your camera whilst on site.

### Specifications

Model	XP-330
For use with	ToughPIX 2300XP Series / Centurion XP Series

## Ultrasonic Couplant Gel



### Description

**CorDEX couplant** is designed for use with the UT5000 on all types of metallic surface and is especially suited to solving the problems of rough, pitted, uneven surfaces to allow smooth probe movement during testing.

**IMPORTANT SAFETY NOTICE:** This product will have a flash point of 160°C (PM) when used for long periods at elevated temperatures.

### Specifications

Part No	XP-560
Size	2 x 125ml (applicator bottles)
Frequency	13.56Mhz
For use with	» UT5000

## ATEX Certified RFID Tags



### Description

**13.56Mhz RFID tags** (Radio Frequency Identification) are supplied to be used in connection with the UT5000, intrinsically safe thickness gauge.

### Features

- » ATEX Certified II 2G EEx ia IIC T4.
- » ATEX Certified I M2 EEx ia I.
- » ATEX Certified II 2 D Ex iaD 21 T70.
- » IP67 design.

### Specifications

Part No (10x RFID Tags)	XP-510
Part No (50x RFID Tags)	XP-550
Size	34mm
Frequency	13.56Mhz
For use with	» UT5000

## Spare Dual Element Transducer



### Description

The **CorDEX Instruments twin crystal compression wave transducer** is suitable for use on corroded and pitted surfaces, thickness measurement testing with a very low cross-talk.

### Features

- » Certified for Zone 1 IIC T4.
- » Dual Element transducer.
- » 1.8m lead.

### Specifications

Part No	XP-570
Transducer Type	Dual Element Transducer
For use with	» UT5000

## Refresh Kit



### Description

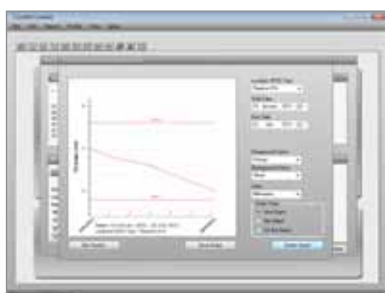
**CorDEX Refresh Kit** designed for the UT5000, is a kit designed to help refresh worn and used parts of your UT5000 from wear and tear.

**IMPORTANT SAFETY NOTICE:** Battery Cover must be in place whilst using the UT5000 in a hazardous area.

### Specifications

Part No	XP-590
Kit contains	<ul style="list-style-type: none"> <li>» Shock Resistant Skin</li> <li>» 2 x Wrist strap</li> <li>» Battery Cover</li> <li>» Stand</li> </ul>
For use with	» UT5000

## CorDEX CONNECT™ Predictive Maintenance System



### Description

**CorDEX CONNECT™** software integrates RFID technology, reporting software, and a handheld intrinsically safe thickness gauge to enable predictive maintenance for pipelines and fixed equipment in hazardous areas.

### Features

- » RFID tags link measurements to a location, date and time.
- » Make informed predictive maintenance decisions from regular scans.
- » Create full reports and graphs for analysis and trending.
- » Set alarms to highlight serious thinning and corrosion.
- » Real time firmware updates and calibration tracking.
- » Copy included with every UT5000.

### System Requirements

Windows Version	Minimum	Recommended
XP	512MB RAM	1024MB RAM
Vista, 7	1024MB RAM	2048MB RAM
Requires Adobe Reader to view the reports created.		

## CAMS CorDEX Asset Management Software



### Description

**CAMS** – Asset Management Software allows users to manage, annotate and generate analytical reports with the images taken from a CorDEX Instruments explosion proof digital cameras quickly and easily.

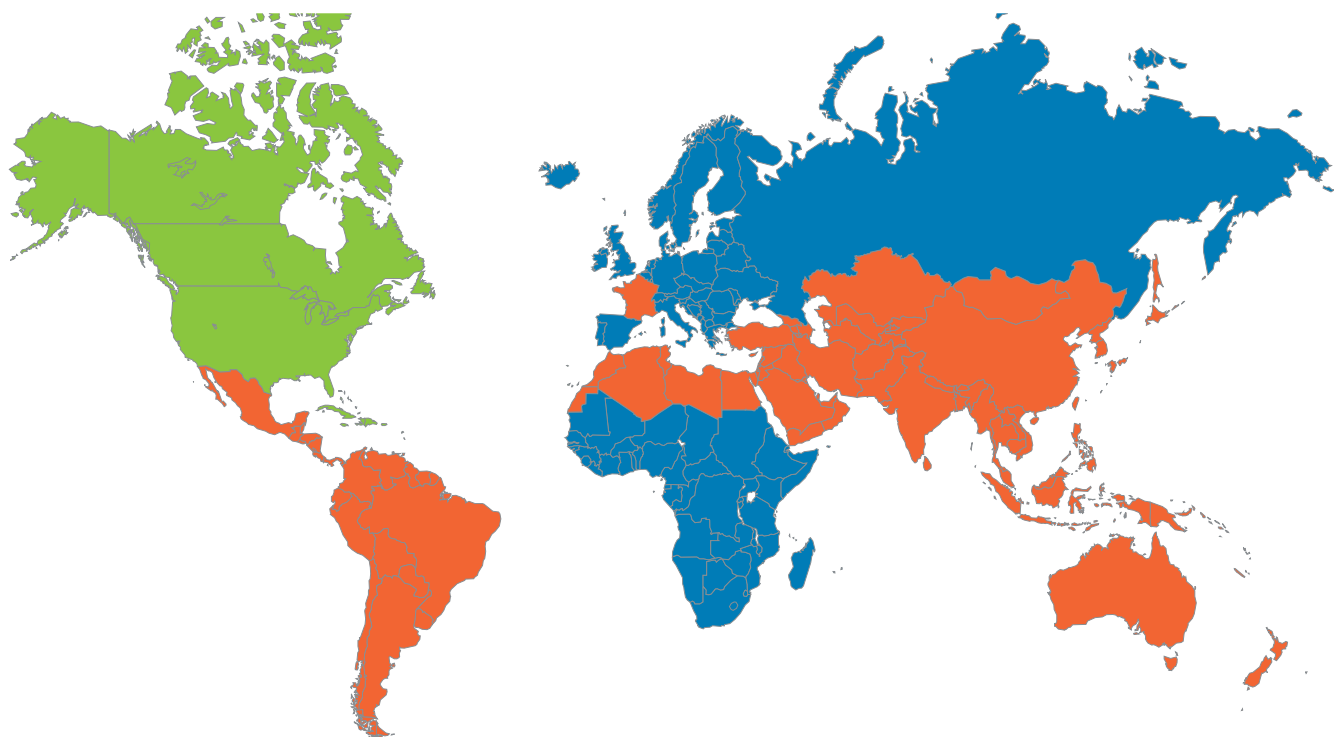
### Features

- » Organise, edit and annotate images.
- » Produce detailed reports in a few easy steps.
- » Highlight problem severity levels.
- » Create albums to store and organize your photos.
- » Receive latest updates from CorDEX Instruments.
- » Copy included with every ToughPIX digital Camera.

### System Requirements

Windows Version	Minimum	Recommended
XP	512MB RAM	1024MB RAM
Vista, 7	1024MB RAM	2048MB RAM
Requires Adobe Reader to view the reports created.		

# Find Your International Contact



## Scott Lang

1 941 780 0837  
[scott.lang@cord-ex.com](mailto:scott.lang@cord-ex.com)

## Marcus Halliday

+44 (0)7815 578107  
[marcus.halliday@cord-ex.com](mailto:marcus.halliday@cord-ex.com)

## David Furley

+44 (0)7791 462546  
[david.furley@cord-ex.com](mailto:david.furley@cord-ex.com)

### UK Headquarters

**Email**  
[sales@cord-ex.com](mailto:sales@cord-ex.com)

**Phone**  
+44 (0)1642 454373

**Fax**  
+44 (0)1904 352415

**CorDEX Instruments Ltd.**  
Unit 1 Owens Road,  
Skippers Lane Industrial Estate,  
Middlesbrough  
TS6 6HE

### US Office

**Email**  
[us.sales@cord-ex.com](mailto:us.sales@cord-ex.com)

**Phone**  
1 877 836 0764

**CorDEX Instruments Inc.**  
5309 Monroe Road  
Charlotte  
NC 28205

### Aberdeen Office

**Email**  
[aberdeen.sales@cord-ex.com](mailto:aberdeen.sales@cord-ex.com)

**Phone**  
+44 (0)1224 841370

**Fax**  
+44 (0)1904 352415

**CorDEX Instruments Ltd.**  
1 Berry Street  
Aberdeen  
AB25 1H



For more information and customer testimonials, contact...

**CorDEX Instruments Ltd**  
Unit 1, Owens Road,  
Skippers Lane Industrial Estate,  
Middlesbrough,  
Cleveland TS6 6HE

**Tel:** +44 (0) 1642 454373  
**Tel USA:** 1 877 836 0764  
**Email:** [sales@cord-ex.com](mailto:sales@cord-ex.com)  
**Web:** [www.cordexinstruments.com](http://www.cordexinstruments.com)