

附表

COMAX ITEM NO.	SONY PART NO.	KNOB COLOR	PAGE
SK-23H11-G 9 S	1-762-356-__	BLACK	2 of 6

1. Scope 适用范围

This specification applies to the signal selector switch(slide type)used in electronic equipment
本规格适用于一般电子设备的信号选择开关(滑动类)

2. Construction 构造

2.1 Circuit arrangement 回路构成

Line(s) Pole(s) Position(s) stroke
2 列 2 回路 3 接点 4 行程

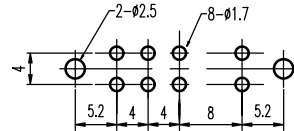
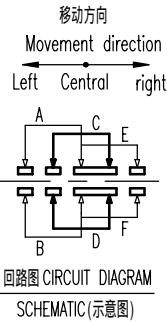
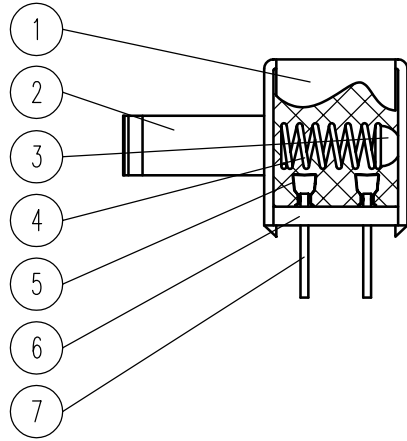
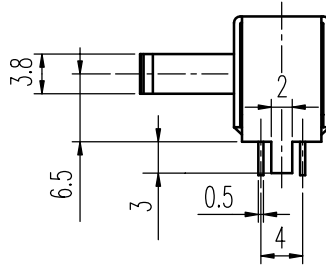
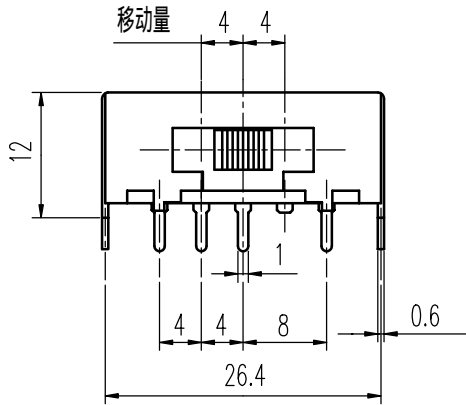
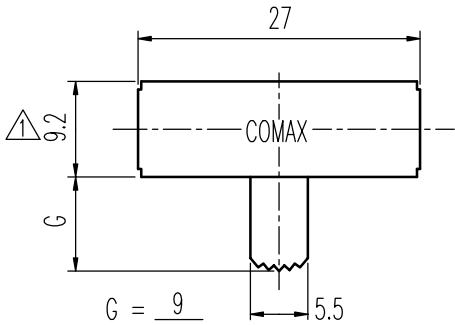
2.2 Changeover timing 切换类型

☒ Shorting 先导通后断开 ☐ Non-shorting 先断开后导通 ☐ Not specified 无要求

2.3 Click 响声

☒ Required 有 ☐ Unrequired 无


2.4 Dimensinons and materials 寸法・材料



基板孔参考图 (指定外公差±0.05)

7	端子 TERMINAL	C2680R-H	8	WHITE	镀银0.5um 最小, Ag 0.5um Min
6	基板 TERMINAL BASE	PHENOLIC RESIN SD-168C	1	BLACK	_____
5	接触片 CONTACT	C5210R-EH/Ag	2	YELLOW/WHITE	_____
4	弹簧 SPRING	STEEL	1	BLACK	NATURAL
3	钢珠 STEEL BALL	STEEL	1	SILVERY	NATURAL
2	胶柄 KNOB	POM F30-03⑤	1	BLACK	_____
1	铁壳 FRAME	SPCC	1	SILVERY	铜底1.0um 最小, 镀镍2.0um 最小 MB:Cu 1.0um Min, Ni 2.0um Min
序NO.	零件 PART	材料 MATERIAL	数量 QTY	颜色 COLOR	表面处理 SURF FINISH

A03	POM F30-02 → POM F30-03, 见⑤	张渠江	2007-10-27
A02	修改材料表栏, 见⑤	杨 蝶	2007-08-01
A01		曹文斌	2006-08-10
标号REV	内容 DESCRIPTION	签名SIGN.	日期 DATE
DWG NO. ITEM2703			

TOLERANCES UNLESS OTHERWISE SPEC.		TITLE	SIDE KNOB SLIDE SWITCH		ITEM NO	SK-23H11-G 9 S		
L ≤ 4	± 0.20					DRAWN	张渠江	2007-10-27
4 < L ≤ 16	± 0.30							
16 < L ≤ 63	± 0.40							
63 < L ≤ 250	± 0.50							
250 < L	± 0.70							
APPROVED	程先金	2007-10-27	PROJECTION					

COMAX ELECTRONICS (HUIZHOU) CO.,LTD.

Mouser Electronics

Authorized Distributor

Click to View Pricing, Inventory, Delivery & Lifecycle Information:

C&K Components:

[SK-23H11-G 9 S](#)