

AUXILIARY SWITCH, 1 NC CONTACT,
1 NO CONTACT,
CONNECTION AUXILIARY CIRCUIT: SCREW TERMINAL,

General technical data:

| | | |
|--|----|---------------------------------|
| product brand name | | SIRIUS |
| product designation | | auxiliary switch compact feeder |
| Protection class IP | | IP20 |
| Relative humidity | | |
| • during operating phase | % | 10 ... 90 |
| Ambient temperature | | |
| • during transport | °C | -55 ... +80 |
| • during storage | °C | -55 ... +80 |
| • during operating | °C | -20 ... +60 |
| Item designation | | |
| • according to DIN EN 61346-2 | | K |
| • according to DIN 40719 extendable after IEC 204-2 / according to IEC 750 | | K |

Auxiliary circuit:

| | | |
|------------------------------|--|---|
| Number of NC contacts | | |
| • for auxiliary contacts | | 1 |
| Number of NO contacts | | |
| • for auxiliary contacts | | 1 |

Installation/mounting/dimensions:

| | | |
|---------------|----|----|
| Width | mm | 45 |
| Height | mm | 32 |
| Depth | mm | 25 |

Connections:

| | | |
|---|-----|----------------------|
| Wire stripping length | mm | 10 |
| Design of the electrical connection | | |
| • for auxiliary and control current circuit | | screw-type terminals |
| Design of screw-type connection | | |
| • for auxiliary contacts | | M6 |
| Tightening torque / for auxiliary contacts | | |
| • with screw-type terminals | N·m | 0.8 ... 1.2 |

| | | |
|---|--|---|
| Type of the connectable conductor cross-section / for auxiliary contacts <ul style="list-style-type: none"> • solid • finely stranded • with conductor end processing | | max. 2x (1 ... 4 mm ²) 2x (0.5 ... 1.5 mm ²), 2x (0.75 ... 2.5 mm ²) |
| Type of the connectable conductor cross-section / for AWG conductors <ul style="list-style-type: none"> • for auxiliary contacts | | 2x (20 ... 16), 2x (18 ... 14), 1x 12 |

Certificates/approvals:

Verification of suitability

IEC / EN 60947-6-2

General Product Approval

EMC

Functional Safety / Safety of Machinery



Shipping Approval



other

[Declaration of Conformity](#)

[other](#)

[Environmental Confirmations](#)

Further information:

Information- and Downloadcenter (Catalogs, Brochures,...)

<http://www.siemens.com/industrial-controls/catalogs>

Industry Mall (Online ordering system)

<http://www.siemens.com/industrial-controls/mall>

CAX-Online-Generator

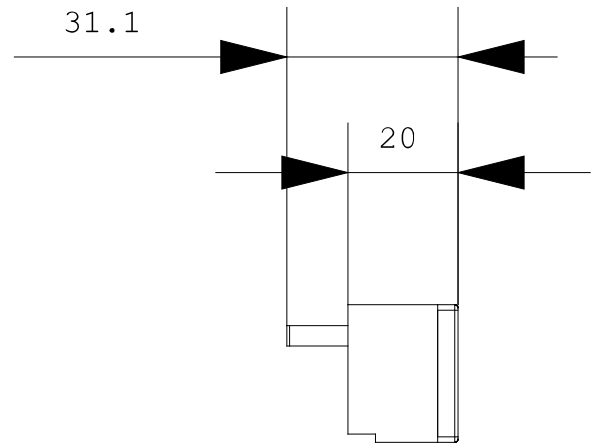
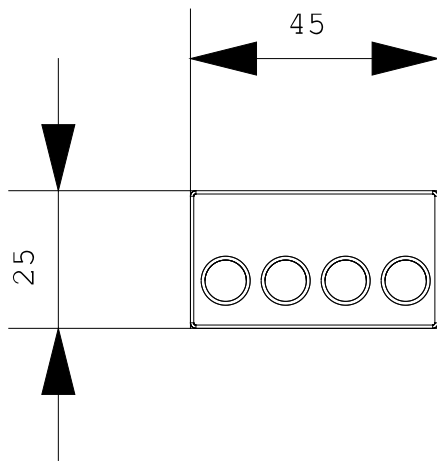
<http://www.siemens.com/cax>

Service&Support (Manuals, Certificates, Characteristics, FAQs,...)

<http://support.automation.siemens.com/WW/view/en/3RA6913-1A/all>

Image database (product images, 2D dimension drawings, 3D models, device circuit diagrams, ...)

http://www.automation.siemens.com/bilddb/cax_en.aspx?mlfb=3RA6913-1A



last change:

Feb 26, 2013