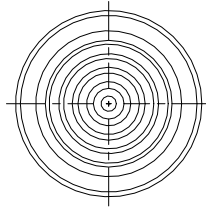
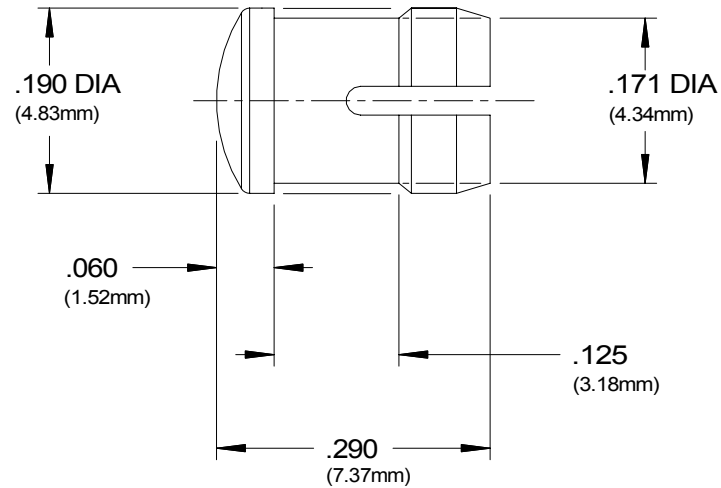
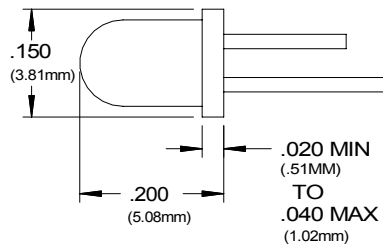




ACTUAL SIZE



RECOMMENDED LED  
SIZE T-1



## ORDERING CODES

MODEL **SMB 200 RTP**

COLOR

RTP Red Transparent BTP Blue Transparent  
ATP Amber Transparent YTP Yellow Transparent  
GTP Green Transparent CTP Clear Transparent

### NOTES:

MATERIAL: Polycarbonate

DESIGN: Low profile lens using fresnel rings and striated lines.

MOUNTING: Mounts thru the front of panel. Mounting holes should be deburred but not chamfered.  
Hole size  $.171 \pm .002$  (4.34mm) on 1/4" centers  
Panel thickness 1/32" to 1/8"

For additional security use retaining rings  
RNG 165 for use with .125" dia. LEDs  
RNG 190 for use with .155" dia. LEDs

U.S. & Foreign Pat. Issued & Pend.

TOLERANCES (EXCEPT AS NOTED)		REVISIONS			CLIPLITE <sup>®</sup> SMB 200			
DECIMAL $\pm .010$	NO.	DESCRIPTION	DATE	BY	VISUAL COMMUNICATIONS COMPANY, INC.			
ANGLE $\pm 30'$	1				7920-G ARJONS DRIVE SAN DIEGO, CA 92126 U.S.A. (619) 549-6900			
DIAMETER .003 TIR	2				DRAWN BY	JMS	SCALE	5 X
RADII .008 Max	3				CHK'D		DATE	10/25/85
	4				TRACED		APP'D	
	5						MATERIAL	See Notes
							DRAWING NO.	SMB200A