



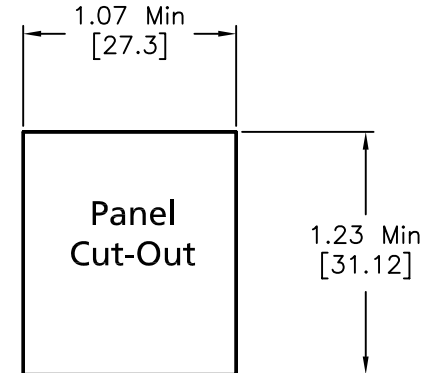
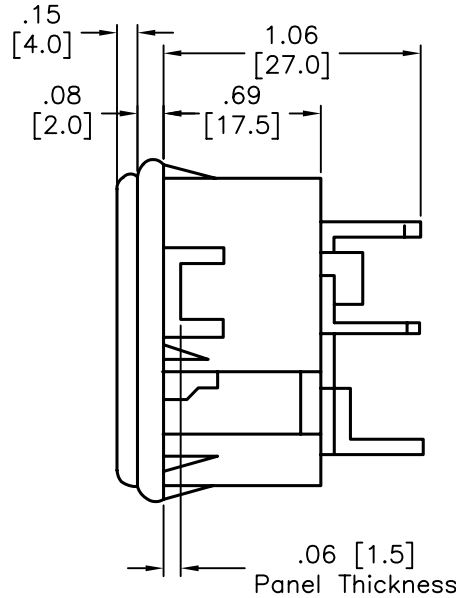
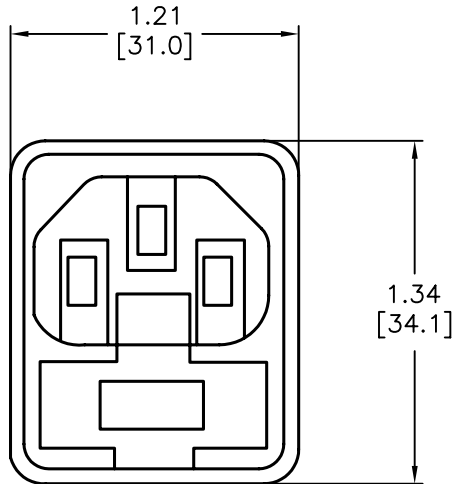
ALL RIGHTS RESERVED. NO PORTION OF THIS PUBLICATION, WHETHER IN WHOLE OR IN PART CAN BE REPRODUCED WITHOUT THE EXPRESS WRITTEN CONSENT OF SPC TECHNOLOGY.

SPC-F005.DWG

## REVISIONS

DOC. NO. SPC-F005 \* Effective: 7/8/02 \* DCP No: 1398

DCP #	REV	DESCRIPTION	DRAWN	DATE	CHECKD	DATE	APPRVD	DATE
162	A	RELEASED	J.W.M.	1/21/98	J.C.	2/4/98	B.B.	2/5/98
1780	B	RoHS Added	DCM	10/16/05	JWM	10/17/05	JWM	10/17/05



### NOTES:

Max. Rating: 10A, 250VAC

Contact Resistance: <10 milliohm

(<15 milliohm Including Fuseholder).

Insulation Resistance: >10<sup>3</sup> Megohm

A.C. Breakdown: Pole-Pole 5.5kV. Poles-Panel 4.0kV.

Operating Temperature: -40°C to +70°C

Max. Pin Temperature: +65°C

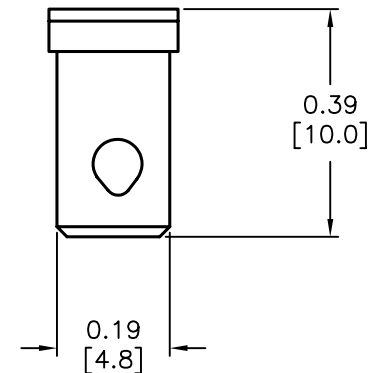
Materials:

Mouldings: Nylon. Flammability Rating UL 94V-0

Contacts: Brass, Pins nickel plated, Tags tin plated

NOTE: Dual fuseholder, One Active, One Spare

Fuses not included - Recommended Size: 5 x 20mm



.187 Quick Disconnect/Solder Terminals

DISCLAIMER:  
ALL STATEMENTS AND TECHNICAL INFORMATION CONTAINED HEREIN ARE BASED UPON INFORMATION AND/OR TESTS WE BELIEVE TO BE ACCURATE AND RELIABLE. SINCE CONDITIONS OF USE ARE BEYOND OUR CONTROL, THE USER SHALL DETERMINE THE SUITABILITY OF THE PRODUCT FOR THE INTENDED USE AND ASSUME ALL RISK AND LIABILITY WHATSOEVER IN CONNECTION THEREWITH.

### TOLERANCES:

UNLESS OTHERWISE SPECIFIED, DIMENSIONS ARE FOR REFERENCE PURPOSES ONLY.

### DRAWN BY:

Jeff McVicker

### DATE:

1/21/98

### CHECKED BY:

JOHN COLE

### DATE:

2/4/98

### APPROVED BY:

BRETT BRAATZ

### DATE:

2/5/98

### DRAWING TITLE:

Snap-In Power Inlet w/Fuseholder IEC320-C14

### SIZE

A

### DWG. NO.

2150

### ELECTRONIC FILE

92N4153.dwg

### REV

B

SCALE: NTS

U.O.M.: Inches [Millimeters]

SHEET: 1 OF 1