

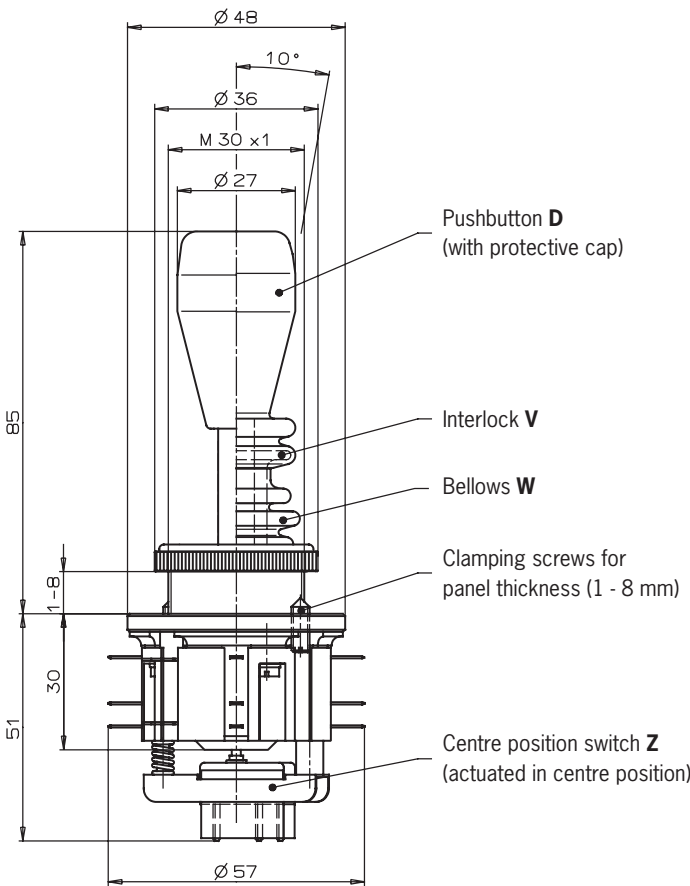
Series WK...

Germanischer Lloyd  
Certificate no. 17 041 - 00 HH

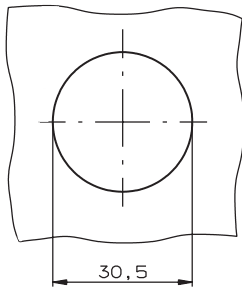


- ▶ Control panel installation to IEC 947-5-1 D30
- ▶ 1 to 8 actuating directions with spring return operation or combined
- ▶ One changeover contact with tab connector 2.8 x 0.5 IEC 760 for each actuating direction
- ▶ Centre position switch
- ▶ Pushbutton in handle

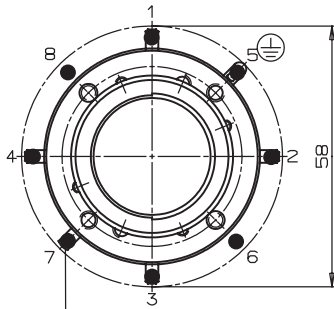
Dimension drawing



Panel cutout



Actuating directions



Connection D  
(the connection is located on the underside for types with 8 directions)

Ordering code

W	K		
---	---	--	--

Series

Actuating direction and switching behavior

Stayput switch **S** (switching lever latches in selected position)  
Spring return switch **T** (switching lever returns to centre position)

Options

Pushbutton **D**  
Bellows **W**  
Interlock **V**  
Centre position switch **Z**  
All-round actuation **R**

## Technical data

Parameter	Value	Unit
Housing material	Glass-fibre reinforced thermoplastic / aluminum	
Switching lever material	Stainless steel	
Degree of protection to IEC 529 on actuating side with / without bellows	IP65 / IP64	
Mounting method	IEC 947-5-1 D30	
Weight	Approx. 0.17	kg
Mechanical life	1x10 <sup>6</sup> switching cycles	
Ambient temperature with spring return switch	-5 to +65	°C
Ambient temperature with stayput switch	-25 to +65	°C
Max. number of switching elements	8	
Connection type	Tab connector 2.8 x 0.5 IEC 760	
Contact elements	Changeover contact C IEC 947-5-1	
Switching principle	Snap-action switch, type ES 584	
Rated insulation voltage U <sub>i</sub>	250	V
Rated impulse withstand voltage U <sub>imp</sub>	2.5	kV
Utilization category AC 15	230 V / 4 A	
Utilization category DC 13	24 V / 2 A	
Min. switching current at 24 V	12	mA
Min. switching voltage	10	V
Contact material	Silver alloy, gold on request	
Short circuit protection (control circuit fuse)	T6 / F10	A
Max. number of actuating directions	8	
All-round actuation R (spring return switch only)	Actuation of 1 switching element (vertical or horizontal) or 2 adjacent switching elements (diagonal) simultaneously, with 8 microswitches *	
Switching positions per direction	1	
Stayput switch S (latching)	According to type designation	
Spring return switch T	According to type designation	
Bellows W	Option	
Interlock V in centre position	Option	
Centre position switch Z	Option	
<b>Pushbutton D</b>	Option	
Degree of protection to IEC 529	IP65	
Electrical life	5x10 <sup>4</sup> switching cycles at 0.7 A / 250 V AC	
Switching element	1 x NO contact	
Utilization category AC 15	230 V / 2 A	
Utilization category DC 13	24 V / 1 A	
Min. switching current at 24 V	12	mA
Min. switching voltage	10	V
Actuating force	< 8	N
Actuating travel	Approx. 3	mm

## Ordering examples

Joystick switch series **WK**, actuating directions **1+3** stayput switch **S**, actuating directions **2+4** spring return switch **T**, Pushbutton **D**, centre position switch **Z**, Interlock **V** in centre position

**WK S13 T24 DZV**

Joystick switch series **WK**, 8 switching elements as spring return switches, all-round actuation **R**

**WK T1-8 R**

## Design

Joystick switch series **WK**, 4 switching elements, 2 actuating directions (2 switching elements per actuating direction)

**on request**

\* Diagonal actuation of 4 adjacent switching elements is on request.