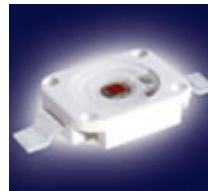
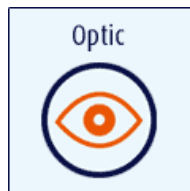
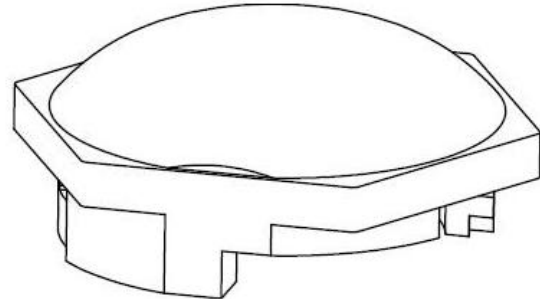
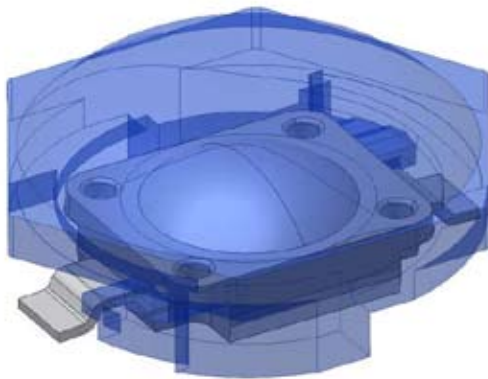


# DATASHEET

**PRODUCT: FL-69S LED-Lens**

## CONTENT

<b>1. FEATURE.....</b>	<b>2</b>
<b>2. TYPICAL APPLICATION.....</b>	<b>2</b>
<b>3. MECHANICAL DIMENSION.....</b>	<b>3</b>
<b>4. REPRESENTATIVE SPATIAL RADIATION PATTERN.....</b>	<b>4</b>
<b>5. PACKING PROCESS.....</b>	<b>5</b>



## Features

1. 145° view angle
2. Works with **OSRAM Golden DRAGON Plus LED**, **Golden DRAGON LED** and compatible LED

## Typical Applications

1. portable light source (e. g. bicycle, flashlight)
2. signal and symbol luminaire for orientation
3. marker lights (e.g. steps, exit ways, etc.)
4. indoor and outdoor commercial and residential architectural lighting
5. tunnel lighting
6. street lighting
7. special backlighting

### SHOWIN Technology Co., Ltd

<http://www.swtech.com.tw> No.32, Shenzun Rd.,  
Shengang, Taichung County 429, Taiwan (R.O.C)  
TEL:886-4-25611133 FAX: 886-4-2561535

Buy Showin products and get applications advice from :-

**Intelligent LED Solutions Ltd,**

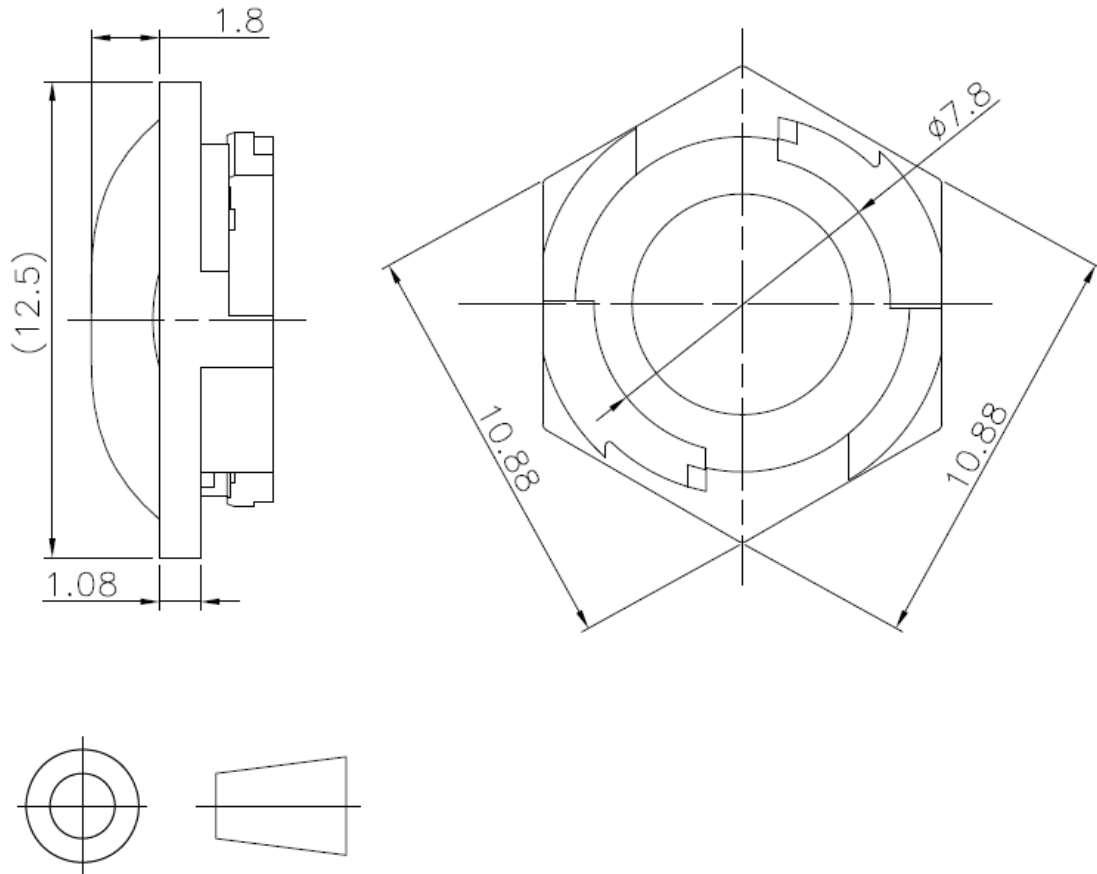
3 Clerewater Place, Thatcham, RG19 3RF, UK

Tel: +44 (0)1635 294606 Fax: +44 (0)1635 869200

Email: [info@i-led.co.uk](mailto:info@i-led.co.uk)

[www.i-led.co.uk](http://www.i-led.co.uk)

## Mechanical Dimensions



### Notes:

1. All dimensions are in millimeter (mm).
2. General tolerance is  $\pm 0.1\text{mm}$ .
3. Protruding of the gate from the side surface is less than 0.3mm.
4. Matching with standard OSRAM Golden DRAGON Plus LED, general pull force can not separate them.
5. Do not subject to temperatures greater than  $110^{\circ}\text{C}$  as plastic deformation may occur. Protect collimator against exposure to solvents and adhesives that are not compatible with it. Use care in handling the optic to avoid scratches or other damage that will effect upon the optical performance.

#### SHOWIN Technology Co., Ltd

<http://www.swtech.com.tw> No.32, Shenzun Rd.,  
Shengang, Taichung County 429, Taiwan (R.O.C)  
TEL: 886-4-25611133 FAX: 886-4-2561535

Buy Showin products and get applications advice from :-

**Intelligent LED Solutions Ltd,**

3 Clerewater Place, Thatcham, RG19 3RF, UK

Tel: +44 (0)1635 294606 Fax: +44 (0)1635 869200

Email: [info@i-led.co.uk](mailto:info@i-led.co.uk)

[www.i-led.co.uk](http://www.i-led.co.uk)

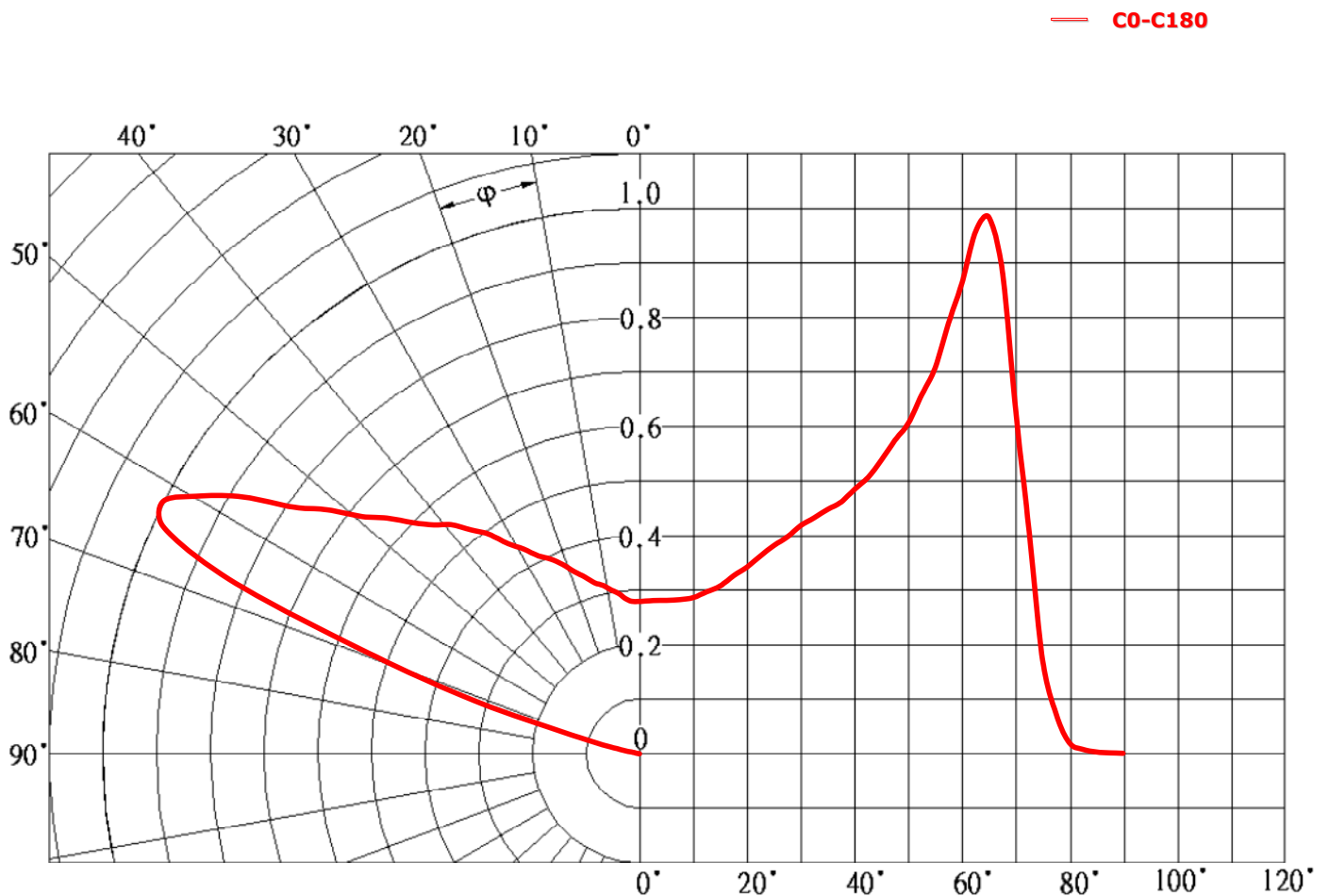
## Representative Spatial Radiation Pattern

Simulation using LUW\_W5AM of OSRAM Golden DRAGON Plus LED :

$$I_{\text{rel}} = f(\phi)$$

$I_{\text{rel}}$  : Relative Intensity

$\phi$  : Angular Displacement



**SHOWIN Technology Co., Ltd**

<http://www.swtech.com.tw> No.32, Shenzun Rd.,  
Shengang, Taichung County 429, Taiwan (R.O.C)  
TEL:886-4-25611133 FAX: 886-4-2561535

Buy Showin products and get applications advice from :-

**Intelligent LED Solutions Ltd,**

3 Clerewater Place, Thatcham, RG19 3RF, UK

Tel: +44 (0)1635 294606 Fax: +44 (0)1635 869200

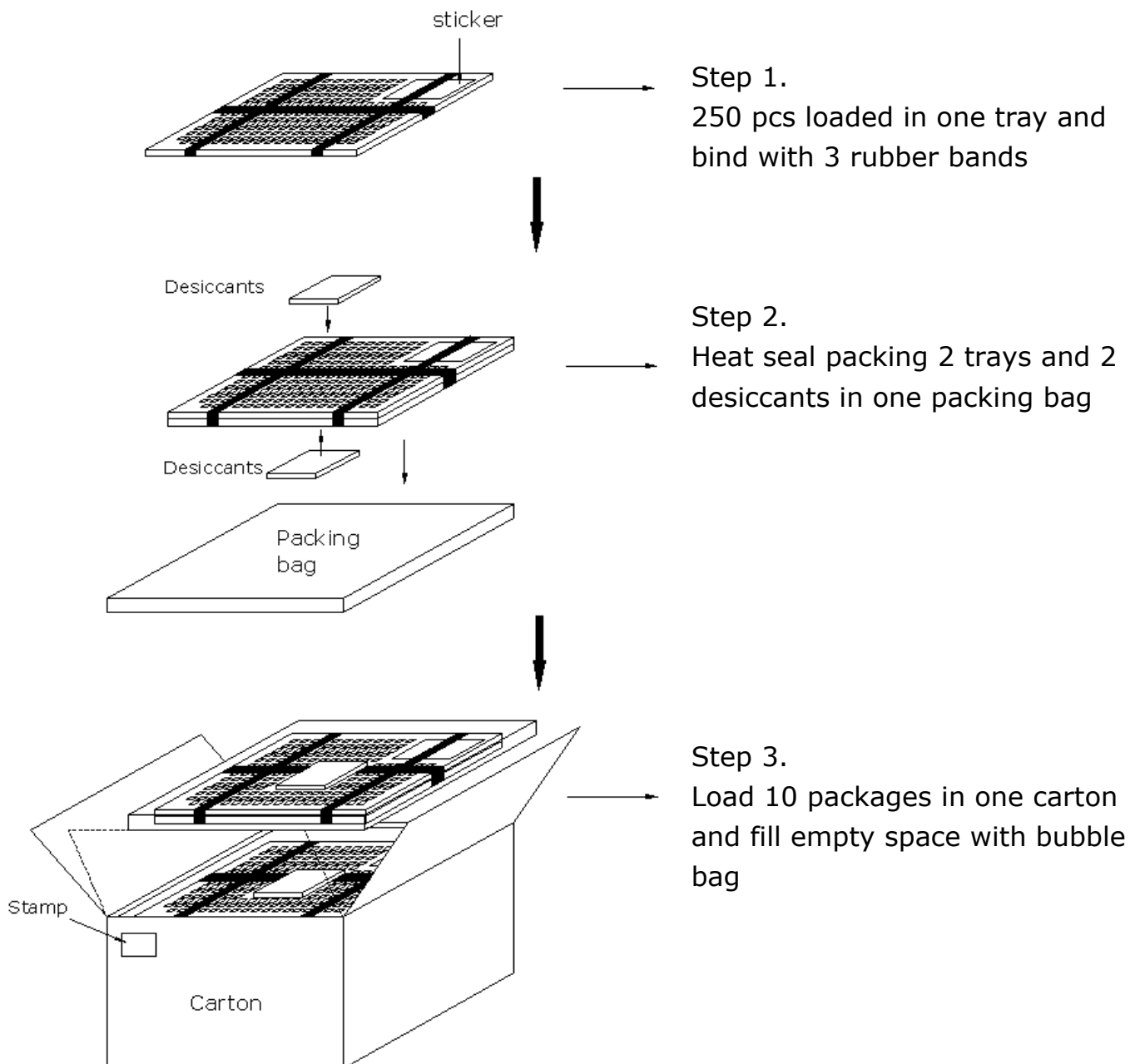
Email: [info@i-led.co.uk](mailto:info@i-led.co.uk)

[www.i-led.co.uk](http://www.i-led.co.uk)

## Packing Process

There are three steps of packing process that is: 250 lenses into a tray, two trays and two desiccants into a packing bag, ten packages into a carton.

Detail as follows:



**SHOWIN Technology Co., Ltd**

<http://www.swtech.com.tw> No.32, Shenzun Rd.,  
Shengang, Taichung County 429, Taiwan (R.O.C)  
TEL:886-4-25611133 FAX: 886-4-2561535

Buy Showin products and get applications advice from :-

**Intelligent LED Solutions Ltd,**

3 Clerewater Place, Thatcham, RG19 3RF, UK

Tel: +44 (0)1635 294606 Fax: +44 (0)1635 869200

Email: [info@i-led.co.uk](mailto:info@i-led.co.uk)

[www.i-led.co.uk](http://www.i-led.co.uk)