

PRODUCT NUMBER  
54776-XXX-XXLF

PLATING

- 1 = 0.76µm GOLD/GXT ON CONTACT AREA OVER 1.27µm NICKEL MIN
- 6 = 0.76µm GXT (PdNi WITH GOLD FLASH) ON CONTACT AREAS OVER 1.27µm NICKEL MIN (ALTERNATIVE 0.76µm GOLD/GXT ON CONTACT AREAS)
- 5 = 0.38µm GXT (PdNi WITH GOLD FLASH) ON CONTACT AREAS OVER 1.27µm NICKEL MIN (ALTERNATIVE 0.38µm GOLD/GXT ON CONTACT AREAS)

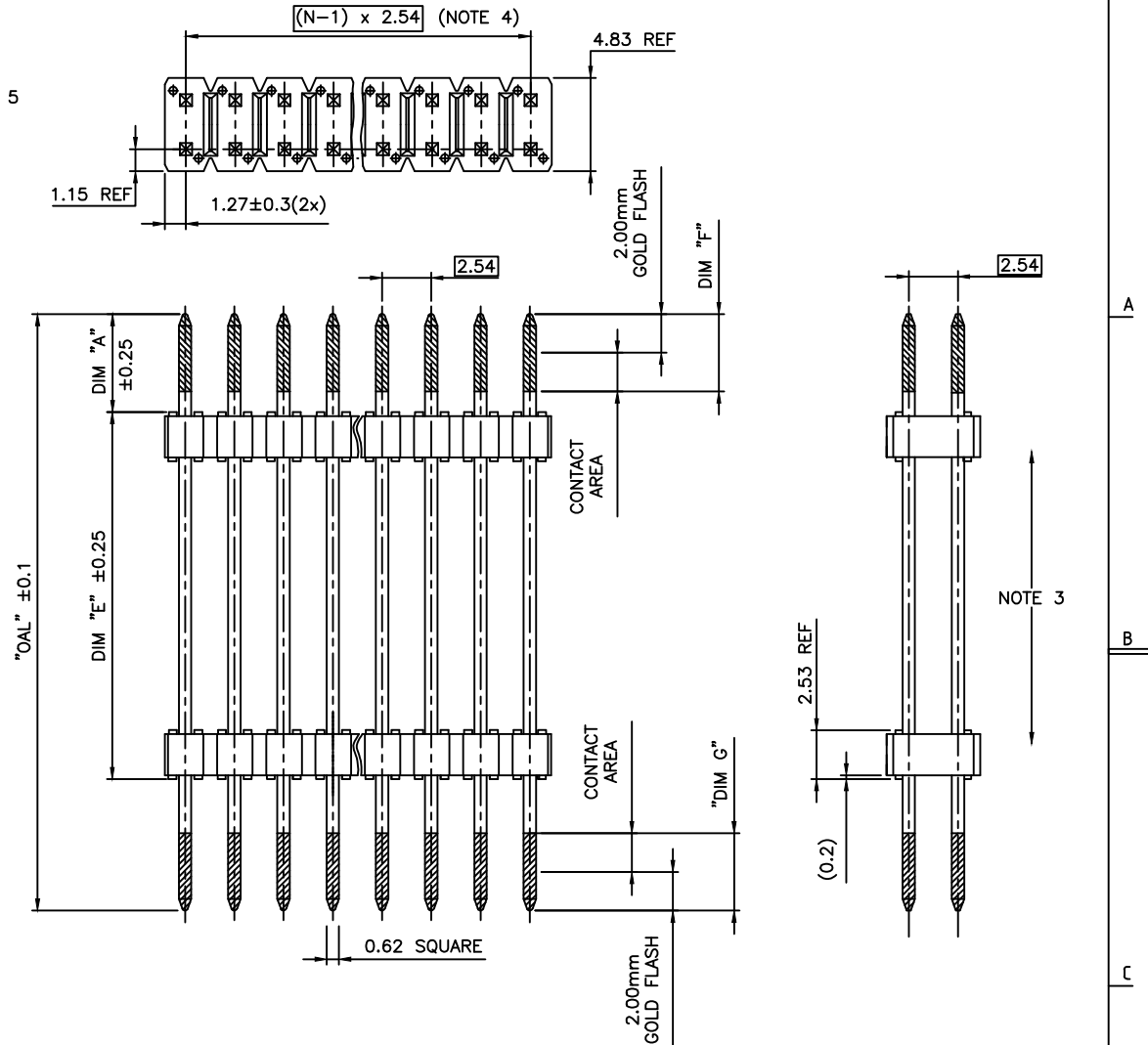
RoHS COMPATIBLE, SEE NOTE 5

TOTAL NB OF POSITIONS  
04 TO 72

PIN STYLE	DIM "A"	DIM "E"	"OAL"	DIM "F"	DIM "G"
01	4.8	21.0	35.8	4.0 MIN	4.0 MIN
02	4.8	24.5	38.4	4.0 MIN	4.0 MIN
03	5.8	16.0	31.1	4.0 MIN	4.0 MIN
04	SEE DIMENSIONS ON SHEET 2			6.0 MIN	6.0 MIN
05	8.5	15.0	35.8	6.5 MIN	8.0 MIN
06	9.6	16.0	35.9	6.0 MIN	6.0 MIN
07	8.05	15.0	31.1	4.0 MIN	4.0 MIN
08	5.70	19.1	34.1	4.0 MIN	4.0 MIN
09	8.75	16.36	31.0	4.0 MIN	4.0 MIN
10	8.30	9.90	26.50	4.0 MIN	4.0 MIN

NOTES:

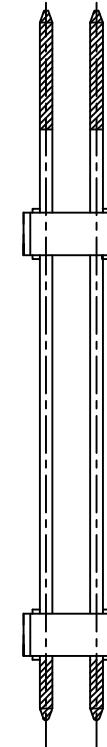
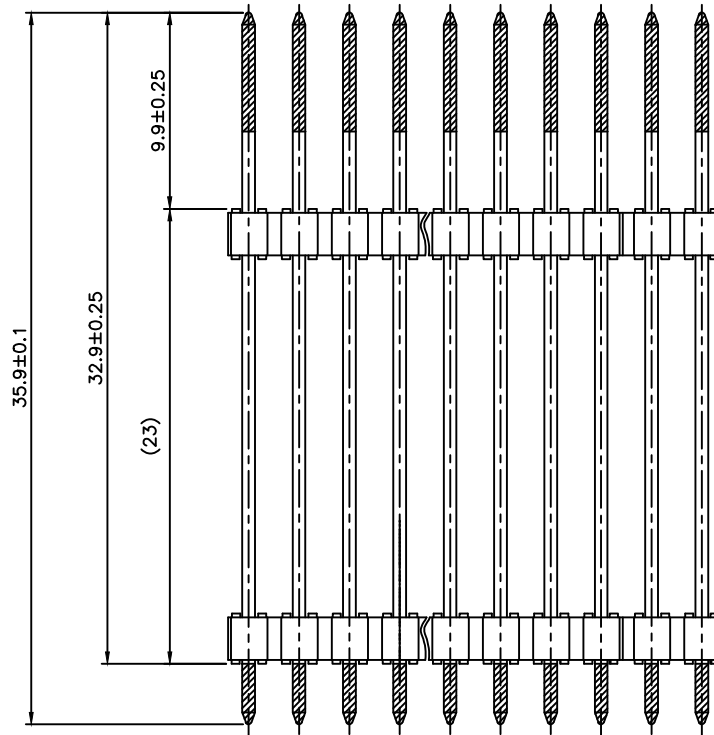
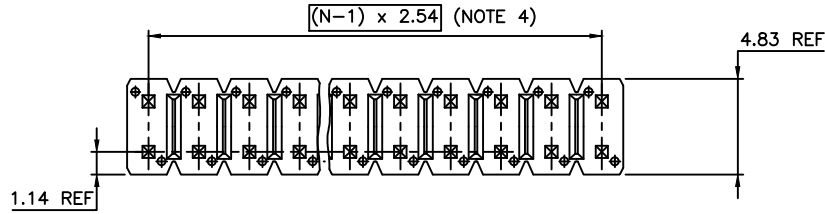
- HOUSING MAT'L : HIGH TEMPERATURE THERMOPLASTIC. UL94V-0 COLOR: BLACK
- PIN MATERIAL : PHOSPHOR BRONZE
- 9N MIN RETENTION IN EITHER DIRECTION
- TO DETERMINE DIMENSIONS :  
N = NUMBER OF POSITIONS PER ROW  
EXAMPLE : 8 POS PER ROW,  $N \times 2.54 = 20.32\text{mm}$
- RoHS COMPATIBLE PRODUCT SPECIFICATIONS
  - PLATING:
    - "LF" MEANS THE PRODUCT IS LEAD-FREE,
  - MANUFACTURING PROCESS COMPATIBILITY
    - THE HOUSING WILL WITHSTAND EXPOSURE TO  $260^{\circ}\text{C} \pm 5^{\circ}\text{C}$  SOLDER BATH TEMPERATURE FOR 5 SECONDS IN A WAVE SOLDER APPLICATION WITH A 1.6mm MIN THICK CIRCUIT BOARD.
  - LABELING:
    - MEETS PACKAGING SPECS AS PER GS-14-920
  - LEGAL STATEMENT: SEE GS-47-0004


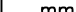



mat'l. code				surface	tolerance	projection	product family	
				ISO 1302	ISO 406 ISO 1101		BERGSTIK	
ltr	ecn no	dr	date	tolerances unless otherwise specified			title	
H	F07-0207	LMU	07.06.06				HEADER DR	
J	F08-0116	JCO	08.02.04				DOUBLE BODY TRIPLEX	
K	F08-0148	RTR	08.03.31					
L	F11-0030	JCO	11.02.18	dr	LMU	02.03.04	dwg no	
M	B-17339	LMU	14.05.21	enr	J COMPAGNON	02.03.04	sheet 1 of 2	
N	B-19264	LMU	14.11.03	chr	JCO	02.04.02	size	
				appd	JCO	02.04.02	54776	
							A3	
							type	
							CUSTOMER	
							Drawing	
sheet index	revision sheet	N	A					
		1	2					

PRODUCT DIMENSIONS  
FOR REFERENCES

54776-604-06LF  
54776-604-20LF



mat'l. code				surface ISO 1302 <input checked="" type="checkbox"/>		tolerance ISO 406 ISO 1101		projection 		product family BERGSTIK			
ltr		ecn no		dr		date		tolerances unless otherwise specified				title	
A		F08.0116		JCO		08.02.24		angles		linear		mm 	
												scale 5:1	
												FCJ 	
				dr		LMU		08.01.15		dwg no		sheet 2 of -	
				enr		J COMPAGNON		08.01.15		54776		A3	
				chr						type		CUSTOMER	
				appd						Drawing			
sheet index		revision sheet											

