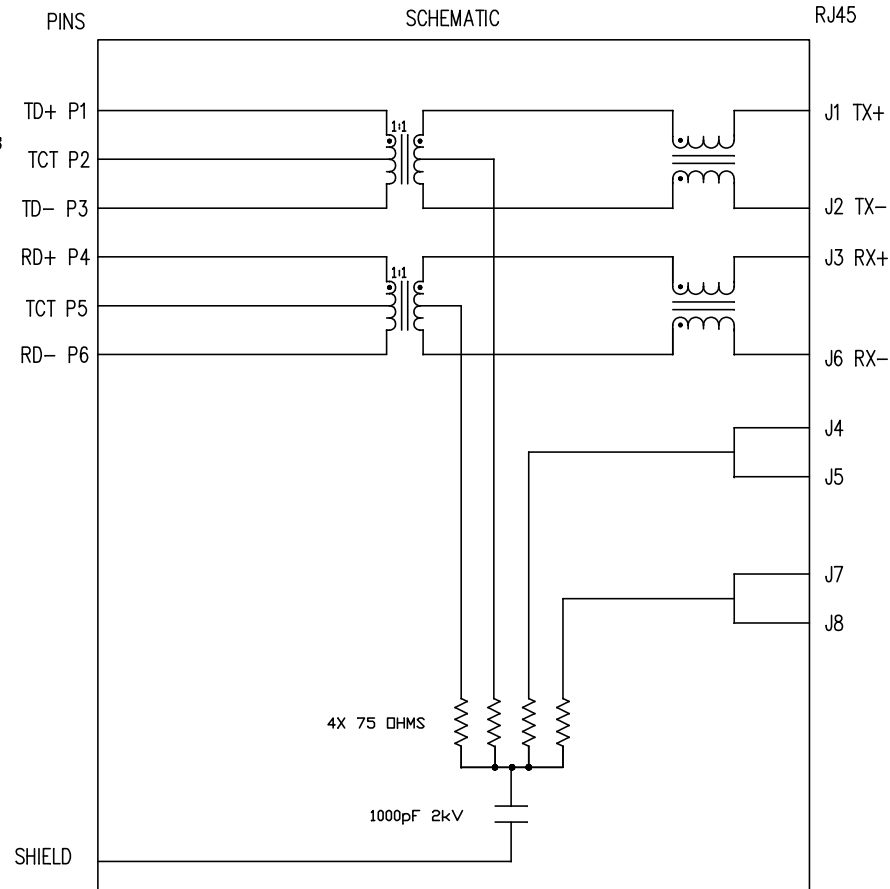


ELECTRICAL CHARACTERISTICS @ 25°C

| | |
|---|--|
| 1.0 TURNS RATIO:(P6-P5-P4) : (J6-J3) | : 1CT : 1CT ± 3% |
| (P3-P2-P1) : (J2-J1) | : 1CT : 1CT ± 3% |
| 2.0 INDUCTANCE: (P6-P4) | : 350uH MIN. @ 0.1V, 100KHz, 8mA DC Bias |
| (P3-P1) | : 350uH MIN. @ 0.1V, 100KHz, 8mA DC Bias |
| 3.0 LEAKAGE INDUCTANCE:P6-P4 (WITH J6 AND J3 SHORT) | : 0.3 MAX. @ 1MHz |
| P3-P1 (WITH J2 AND J1 SHORT) | : 0.3 MAX. @ 1MHz |
| 4.0 INTERWINDING CAPACITANCE:(P6,P5,P4) TO (J6,J3) | : 30pF MAX @ 1MHz |
| (P3,P2,P1) TO (J2,J1) | : 30pF MAX. @ 1MHz |
| 5.0 DC RESISTANCE: (J6-J3)=(J2-J1) | : 1.2 ohms Max. |
| RECEIVE | |
| 6.0 RETURN LOSS:1MHz TO 30MHz | : 18dB MIN. |
| 60MHz TO 80MHz | : 12dB MIN. |
| NOTE: 100 OHMS CONNECTED TO (J2-J1) OR (J6-J3). | |
| 7.0 DIELECTRIC WITHSTAND: (J1, J2) TO (P1, P3) | : 1500 Vrms |
| (J3, J6) TO (P4,P6) | : 1500 Vrms |
| 8.0 INSERTION LOSSRS=RL=100 ohms | |
| 100KHz TO 100MHz | : 1.1 dB TYP |
| 9.0 RISE TIMERS=100 OHMS AND RL = 100 OHMS | |
| OUTPUT VOLTAGE = 1 V peak | : 3.0 nS MAX |
| PULSE WIDTH= 112nS | : 3.0 nS MAX |
| 10.0CROSS TALK:1MHz TO 100MHz | : 40 dB TYP |
| 11.0COMMON TO COMMON MODE ATTENUATION: | |
| 30MHz TO 100MHz: 35dB TYP | |



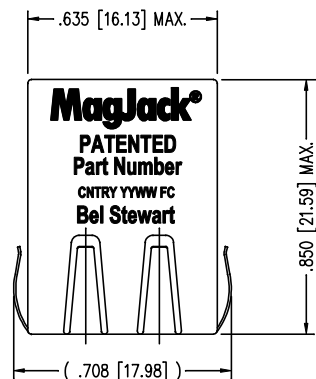
NOTES

1.0 PINS WITHOUT ELECTRICAL CONNECTION ARE OMITTED.

| | | | | | | | |
|---------------|----------|---|------------------------|---------------|------------------------------|-----------|---|
| ORIGINATED BY | DATE | TITLE | PART NO. / DRAWING NO. | STANDARD DIM. | [] METRIC DIM. AS REFERENCE | | COMPONENTS FOR A CONNECTED PLANET |
| Bain Liu | 08-31-09 | MagJack® 10/100BT TAB DOWN, SHIELDED PATENTED | SI-60126-F | TOL. IN INCH | UNIT : INCH [mm] | REV. : A0 | |
| DRAWN BY | DATE | | FILE NAME | .X | SCALE : N/A | SIZE : A4 | |
| Bain Liu | 08-31-09 | | SI-60126-F.DWG | .XX | | PAGE : 2 | |
| | | | | .XXX | | | |

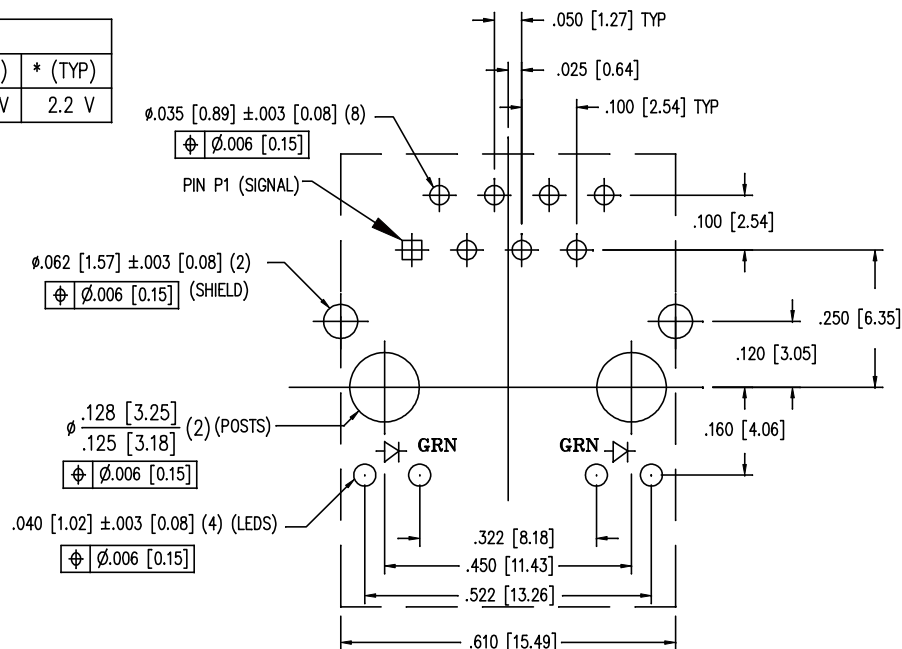
THE INFORMATION CONTAINED HEREIN IS CONSIDERED "PROPRIETARY" TO BEL FUSE INC. AND SHALL NOT BE COPIED, REPRODUCED OR DISCLOSED WITHOUT THE WRITTEN APPROVAL OF BEL FUSE INC.

RoHS
2002/95/EC



| LED SPECIFICATION | | | |
|-------------------|------------|-----------------|---------|
| STANDARD LED | WAVELENGTH | Forward V (MAX) | * (TYP) |
| GREEN | 565 nm | 2.5 V | 2.2 V |

*WITH A FORWARD CURRENT OF 20 mA (TYP)

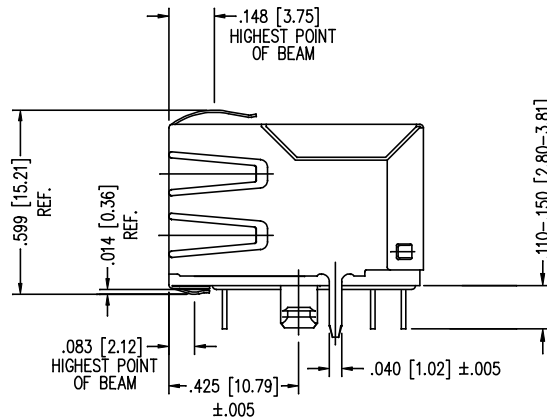
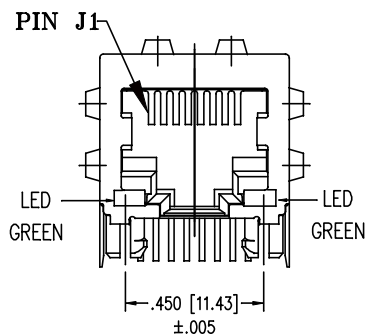



P.C.B. RECOMMENDED HOLE LAYOUT
SEEN FROM COMPONENT SIDE

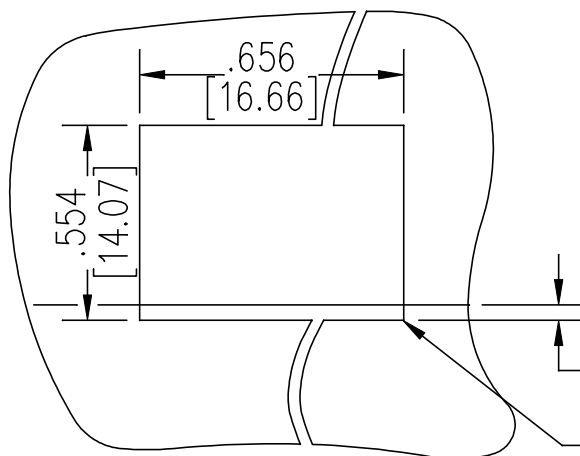
ALL CENTERLINE DIMENSIONS ARE BASIC.

NOTES:

- CONNECTOR MATERIALS:
HOUSING: THERMOPLASTIC UL94 V-0
CONTACT/SHIELD: COPPER ALLOY
SHIELD PLATING: NICKEL OR TIN
CONTACT PLATING: SELECTIVE GOLD,
50 MICRO-INCHES MIN. IN CONTACT AREA.
- PIN NOT ELECTRICALLY CONNECTED MAYBE OMITTED.
SEE ELECTRICAL DRAWING FOR OMITTED PINS.
- TOLERANCES COMPLY WITH F.C.C. DIMENSION REQUIREMENTS.
- ALL TOLERANCES NOT OTHERWISE SPECIFIED TO BE ±.005 [0.13]
- WAVE SOLDER COMPATIBLE - PREHEAT 125°C/90SECS.



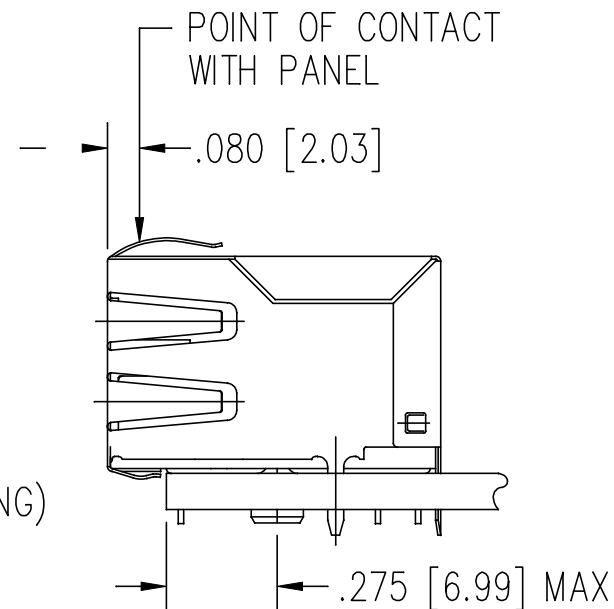
| ORIGINATED BY | | DATE | TITLE <div>MagJack®</div> <div>10/100BT</div> <div>TAB DOWN, SHIELDED</div> <div>PATENTED</div> | PART NO. / DRAWING NO. | | STANDARD DIM. | | [] METRIC DIM. AS REFERENCE | | <div>bel</div> <div>COMPONENTS FOR A CONNECTED PLANET</div> | |
|---------------|--|----------|--|------------------------|--|---------------|--|---|--|---|-----------|
| Bain Liu | | 08-31-09 | | SI-60126-F | | TOL. IN INCH | | UNIT : INCH [mm] | | | REV. : A0 |
| DRAWN BY | | DATE | | FILE NAME | | .X | | SCALE : N/A | | | SIZE : A4 |
| Bain Liu | | 08-31-09 | | SI-60126-F.DWG | | .XX | |  | | | PAGE : 3 |
| | | | | | | .XXX | | ±0.005 | | | |



SUGGESTED PANEL OPENING

.000 (TOP OF PCB TO BOTTOM OF OPENING)

.010 [0.25] MAX. RADIUS(4)



1. THE SUGGESTED PANEL OPENING IS INTENDED TO GIVE THE USER THE ABILITY TO HAVE REASONABLE JACK / PANEL CLEARANCES YET MAINTAIN RELIABLE GROUNDING CAPABILITY.
2. ALL TOLERANCES NOT OTHERWISE SPECIFIED TO BE ± 0.005 [0.13]

| | | | | | | | | | | |
|---------------|----------|--|------------------------|------|---------------|--|------------------------------|--|---|-----------|
| ORIGINATED BY | DATE | TITLE <div>MagJack®</div> <div>10/100BT</div> <div>TAB DOWN, SHIELDED</div> <div>PATENTED</div> | PART NO. / DRAWING NO. | | STANDARD DIM. | | [] METRIC DIM. AS REFERENCE | | <div>bel</div> <div>COMPONENTS FOR A CONNECTED PLANET</div> | |
| Bain Liu | 08-31-09 | | SI-60126-F | | TOL. IN INCH | | UNIT : INCH [mm] | | | REV. : A0 |
| DRAWN BY | DATE | | FILE NAME | | .X | | SCALE : N/A | | | SIZE : A4 |
| Bain Liu | 08-31-09 | | SI-60126-F.DWG | | .XX | | | | | PAGE : 4 |
| | | | | .XXX | ±0.005 | | | | | |