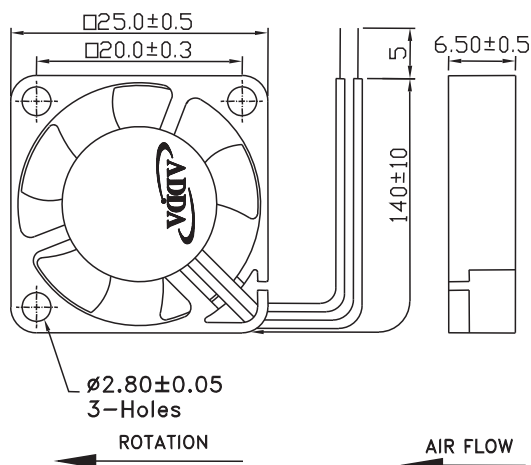
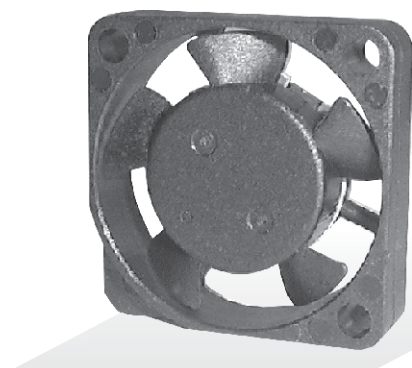




AD2506 SERIES

External Dimensions



Frame:Plastic(UL:94V-0)
Impeller:Plastic(UL:94V-0)
Lead wire:UL 1571AWG28

Specifications(Nominal)

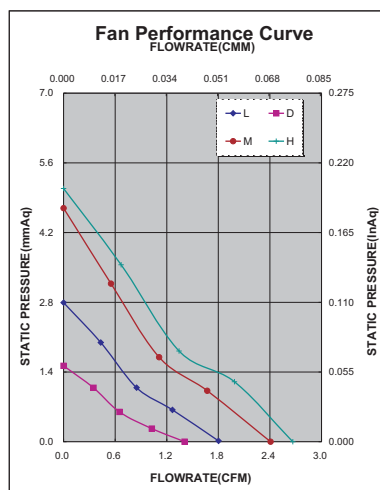
*:Noise is measured at the distance of one (1) meter from the axis of intake.

Bearing type: ◎=Ball ※=Sleeve ●=Hypro bearing

Frame size (mm)	Model No.	Bearing System Type	Rated Voltage (VDC)	Current (A)	Power (W)	Rated Speed (rpm)	Maximum AirFlow (CMM) (CFM)	Maximum Pressure (InAq) (mmAq)	*Noise Level (dB/A)	Weight (g)
25x25x06	AD0205DX-K50(TX)	●	5	0.051	0.255	7000	0.039 1.400	0.060 1.524	14.0	5.0
	AD0205LX-K50(TX)	●	5	0.086	0.430	9000	0.050 1.800	0.110 2.794	21.5	
	AD0205MX-K50(TX)	●	5	0.120	0.600	12000	0.067 2.400	0.185 4.699	29.0	
	AD0205HX-K50(TX)	●	5	0.150	0.750	14000	0.073 2.600	0.200 5.080	35.0	
	AD0212LX-K50(TX)	●	12	0.050	0.600	9000	0.050 1.800	0.110 2.794	21.5	
	AD0212MX-K50(TX)	●	12	0.060	0.720	12000	0.067 2.400	0.185 4.699	29.0	

Specifications subject to change without notice.

The specification for bearing type is for reference only , for more bearing types information, please contact with your ADDA sales representative, thanks!!
(網頁上呈現產品軸承資訊均以參考為主，若需其他產品資訊請聯絡您在ADDA的業務代表，謝謝!!)



*Motor protective circuit and third lead wire functions

0	1	2	3	4	6	7	8	9	A	B
✓	✓		✓							

*Safety approvals

✓	✓			✓

Mouser Electronics

Authorized Distributor

Click to View Pricing, Inventory, Delivery & Lifecycle Information:

[ADDA:](#)

[AD0205MB-K53\(S\)-LF](#)