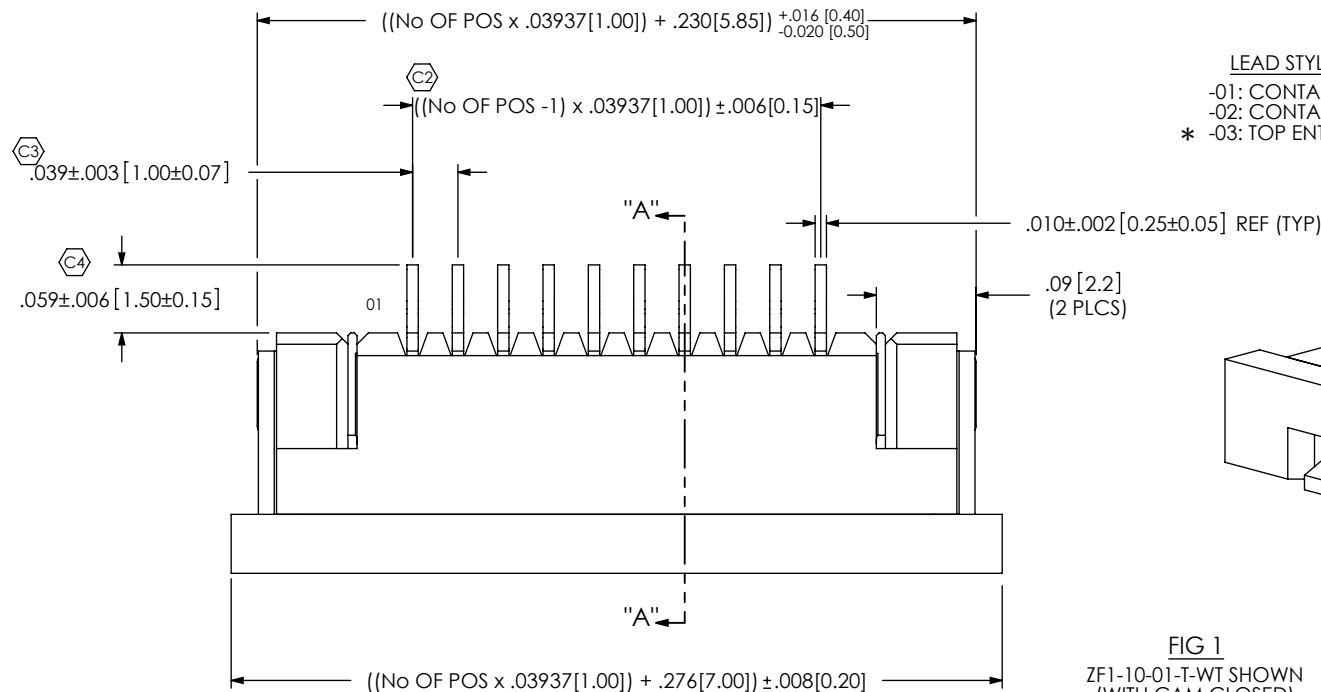


DO NOT  
SCALE FROM  
THIS PRINT



ZF1-XX-XX-XX-WT-XX

No OF POSITIONS  
-04 THRU -30

OPTIONS  
-TR: TAPE AND REEL  
(SEE SHEET 4, FIG 3)

LEAD STYLE

-01: CONTACT BOTTOM  
-02: CONTACT TOP  
\* -03: TOP ENTRY (SEE SHEET 3)

WELD TAB

PLATING SPECIFICATION

-T: PURE TIN, MATTE FINISH  
-TM: PURE TIN, MATTE FINISH

\* -03 LEAD STYLE AVAILABLE TO EXISTING  
CUSTOMERS ONLY AS OF REVISION P

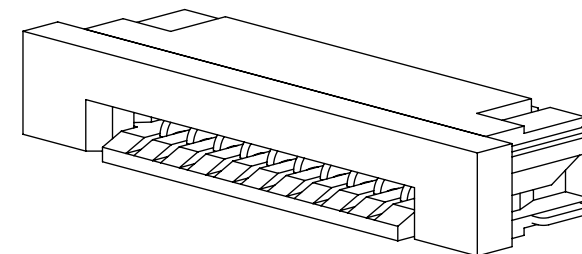
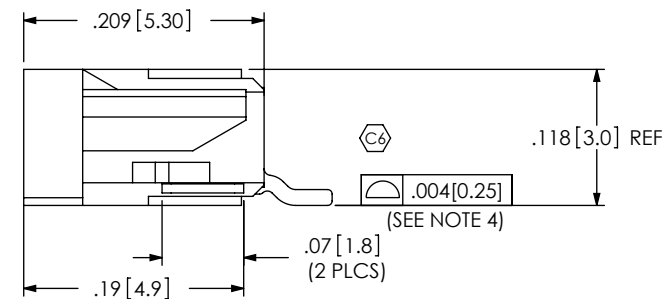
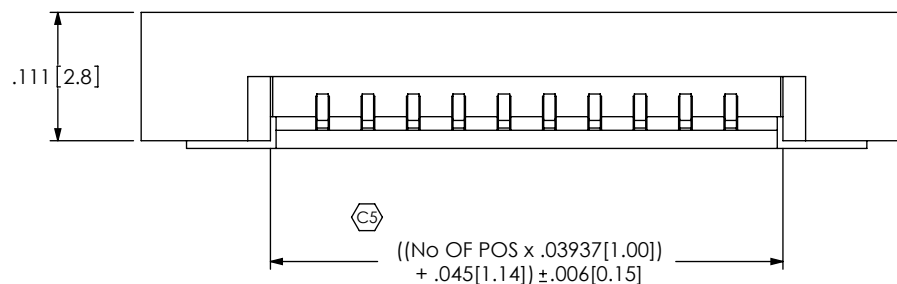


FIG 1

ZF1-10-01-T-WT SHOWN  
(WITH CAM CLOSED)



NOTES:

1. REPRESENTS A CRITICAL DIMENSION.
2. BURR ALLOWANCE: .0010[.025] MAXIMUM.
3. CONTACT; MINIMUM PUSHOUT FORCE: 6 OZ.
4. COPLANARITY INCLUDES TAILS AND WELD TABS.
5. WELD TAB RETENTION: 12 OZ.
6. BREAKOFF BURR NOT TO EXCEED .007[0.18] & MUST REMAIN ATTACHED.

UNLESS OTHERWISE SPECIFIED,  
DIMENSIONS ARE IN INCHES.

TOLERANCES ARE:

DECIMALS ANGLES  
.XX: ±.01 [0.4] 2°  
.XXX: ±.010 [0.25]  
.XXX: ±.000 [0.15]

PROPRIETARY NOTE

THIS DOCUMENT CONTAINS INFORMATION  
CONFIDENTIAL AND PROPRIETARY TO  
SAMTEC, INC. AND SHALL NOT BE REPRODUCED  
OR TRANSFERRED TO OTHER DOCUMENTS OR  
DISCLOSED TO OTHERS OR USED FOR ANY  
PURPOSE OTHER THAN THAT WHICH IT WAS  
OBTAINED WITHOUT THE EXPRESSED WRITTEN  
CONSENT OF SAMTEC, INC.

MATERIAL: DO NOT SCALE DRAWING  
HOUSING: LCP E130i 94-V2, COLOR: NATURAL  
CAM SLIDER: PPS D5 94-V2, COLOR: BLACK  
CONTACT & WELD TAB:  
PHOS BRONZE

MAX FLASH ALLOWED: .002  
MAX GATE VESTIGE: .002

F:\DWG\MISC\MKTG\ZF1-XX-XX-XX-WT-XX-MKT.SLDDRW

SHEET SCALE: 6:1

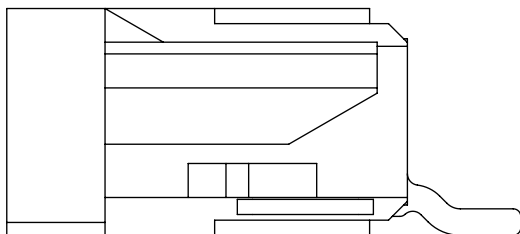
**samtec**

520 PARK EAST BLVD, NEW ALBANY, IN 47150  
PHONE: 812-944-6733 FAX: 812-948-5047  
e-Mail: info@SAMTEC.com code: 55322

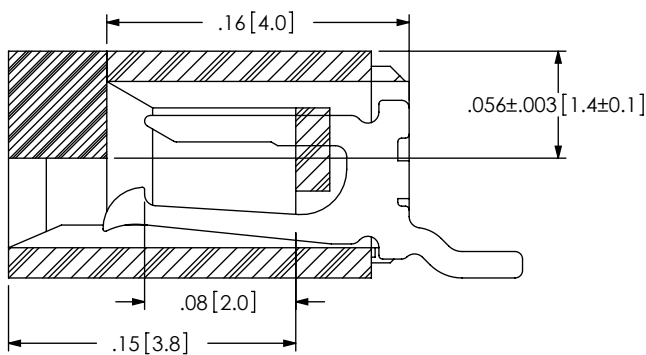
DESCRIPTION:  
ZERO INSERTION FORCE 1mm ASSEMBLY

DWG. NO.  
ZF1-XX-XX-XX-WT-XX

BY: KEVIN B 9/20/2002 SHEET 1 OF 4

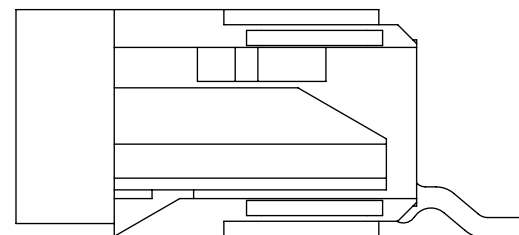


-01 LEAD STYLE [CONTACT BOTTOM]  
(WITH CAM OPEN)

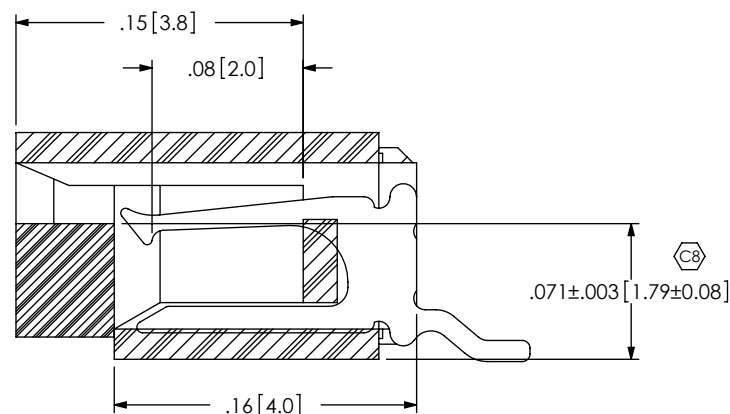


**SECTION "A"-"A"**

-01 LEAD STYLE  
(WITH CAM CLOSED)



-02 LEAD STYLE [CONTACT TOP]  
(WITH CAM OPEN)

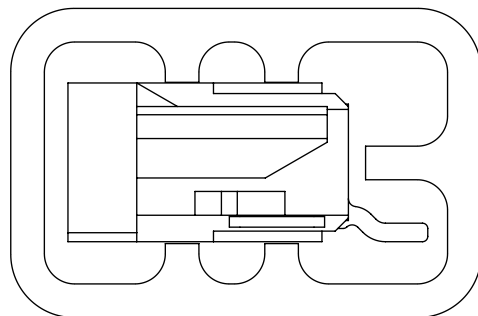


**SECTION "A"-"A"**

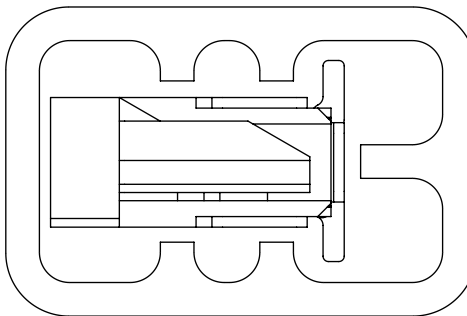
-02 LEAD STYLE  
(WITH CAM CLOSED)

**PACKAGING VIEWS**  
(-TR OPTION SHOWN ON SHEET 4)

[PARTS TO HAVE POSITION #1 LOADED IN  
SAME DIRECTION AS ARROW ON TUBE]



-01 & -02 LEAD STYLE:  
TUBE: PT-1-24-02-117  
PLUG: TP-24



-03 LEAD STYLE:  
TUBE: PT-1-24-02-117  
PLUG: TP-24

F:\DWG\MISC\MKTG\ZF1-XX-XX-XX-WT-XX-MKT.SLDDRW

**PROPRIETARY NOTE**

THIS DOCUMENT CONTAINS INFORMATION  
CONFIDENTIAL AND PROPRIETARY TO  
SAMTEC, INC. AND SHALL NOT BE REPRODUCED  
OR TRANSFERRED TO OTHER DOCUMENTS OR  
DISCLOSED TO OTHERS OR USED FOR ANY  
PURPOSE OTHER THAN THAT WHICH IT WAS  
OBTAINED WITHOUT THE EXPRESSED WRITTEN  
CONSENT OF SAMTEC, INC.

DO NOT SCALE DRAWING

SHEET SCALE: 10:1

**samtec**

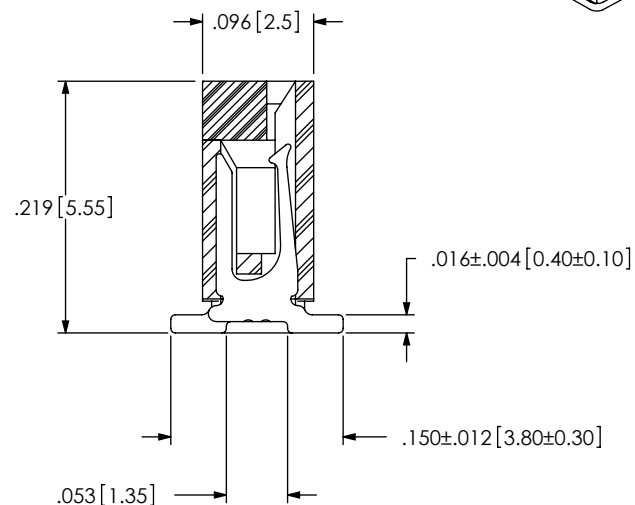
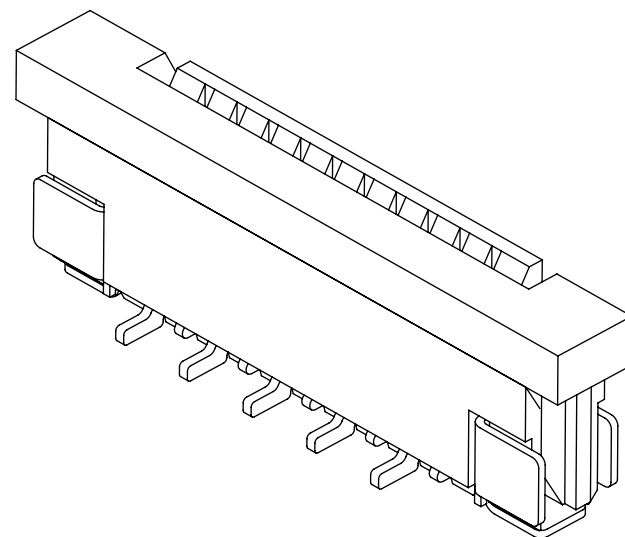
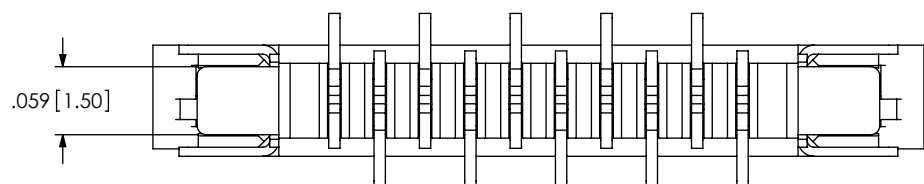
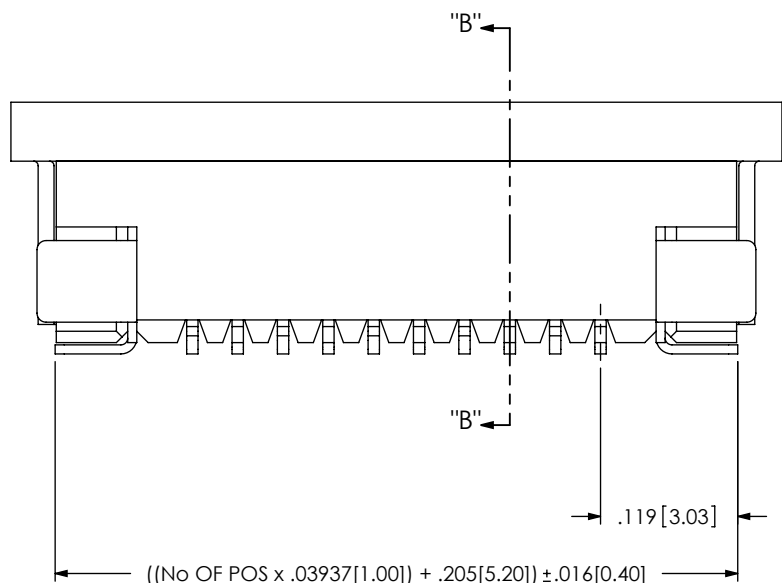
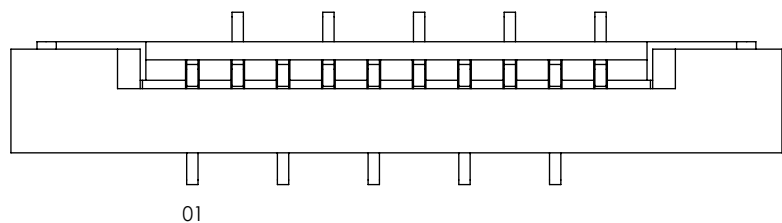
520 PARK EAST BLVD, NEW ALBANY, IN 47150  
PHONE: 812-944-6733 FAX: 812-948-5047  
e-Mail: info@SAMTEC.com code: 55322

DESCRIPTION:  
ZERO INSERTION FORCE 1mm ASSEMBLY

DWG. NO.  
ZF1-XX-XX-XX-WT-XX

BY: KEVIN B 9/20/2002 SHEET 2 OF 4

FIG 2  
\* -03 LEAD STYLE  
(SAME AS FIG 1, UNLESS OTHERWISE STATED)  
(ZF1-10-03-T-WT SHOWN)



SECTION "B"-"B"

F:\DWG\MISC\MKTG\ZF1-XX-XX-XX-WT-XX-MKT.SLDDRW

PROPRIETARY NOTE

THIS DOCUMENT CONTAINS INFORMATION  
CONFIDENTIAL AND PROPRIETARY TO  
SAMTEC, INC. AND SHALL NOT BE REPRODUCED  
OR TRANSFERRED TO OTHER DOCUMENTS OR  
DISCLOSED TO OTHERS OR USED FOR ANY  
PURPOSE OTHER THAN THAT WHICH IT WAS  
OBTAINED WITHOUT THE EXPRESSED WRITTEN  
CONSENT OF SAMTEC, INC.

DO NOT SCALE DRAWING

SHEET SCALE: 6:1

**samtec**

520 PARK EAST BLVD, NEW ALBANY, IN 47150  
PHONE: 812-944-6733 FAX: 812-948-5047  
e-Mail: info@SAMTEC.com code: 55322

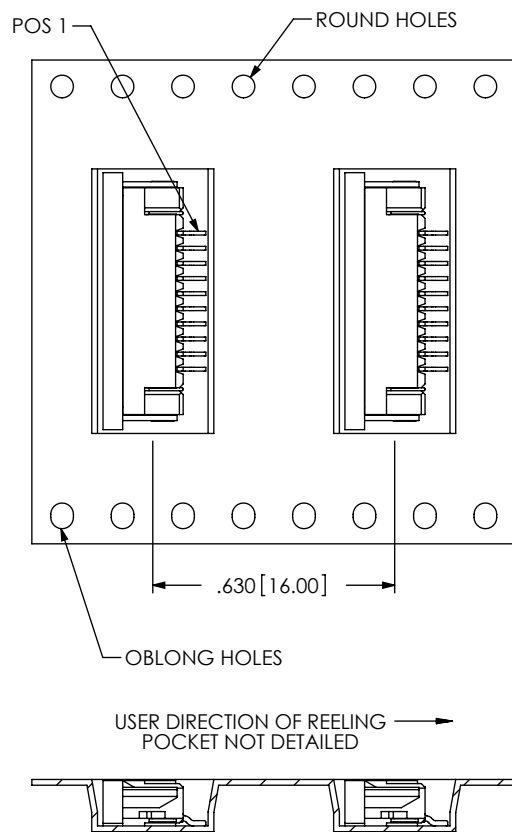
DESCRIPTION:  
ZERO INSERTION FORCE 1mm ASSEMBLY

DWG. NO.  
ZF1-XX-XX-XX-WT-XX

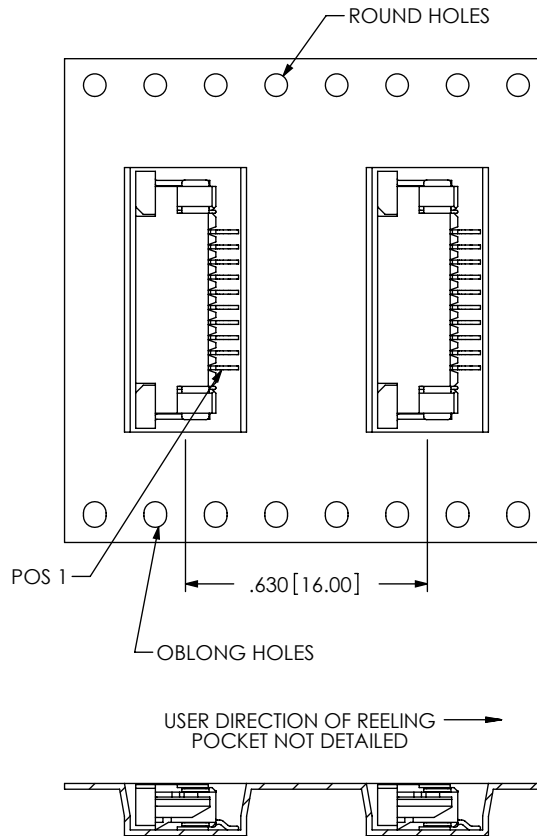
BY: KEVIN B 9/20/2002 SHEET 3 OF 4

FIG 3  
-TR OPTION-01 LEAD STYLE

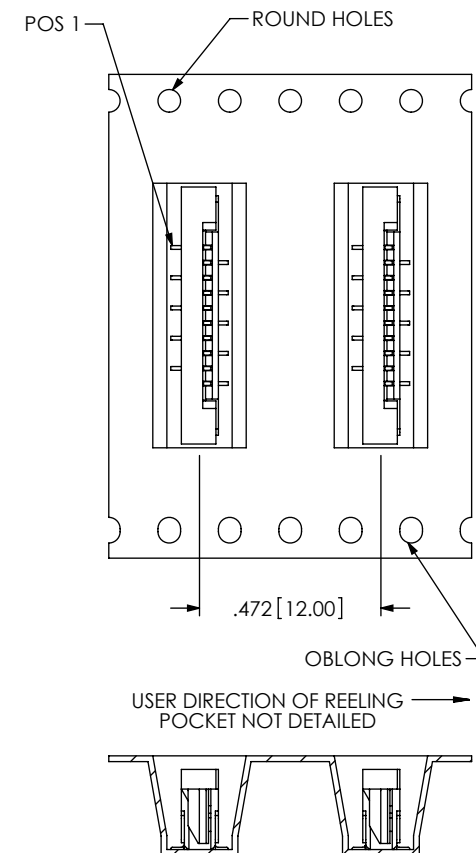
NOTE: POS 1 CLOSEST TO ROUND HOLES

-02 LEAD STYLE

NOTE: POS 1 CLOSEST TO OBLONG HOLES

-03 LEAD STYLE

NOTE: POS 1 CLOSEST TO ROUND HOLES



F:\DWG\MISC\MKTG\ZF1-XX-XX-XX-WT-XX-MKT.SLDDRW

**PROPRIETARY NOTE**

THIS DOCUMENT CONTAINS INFORMATION  
CONFIDENTIAL AND PROPRIETARY TO  
SAMTEC, INC. AND SHALL NOT BE REPRODUCED  
OR TRANSFERRED TO OTHER DOCUMENTS OR  
DISCLOSED TO OTHERS OR USED FOR ANY  
PURPOSE OTHER THAN THAT WHICH IT WAS  
OBTAINED WITHOUT THE EXPRESSED WRITTEN  
CONSENT OF SAMTEC, INC.

SHEET SCALE: 2:1

**samtec**

520 PARK EAST BLVD, NEW ALBANY, IN 47150  
PHONE: 812-944-6733 FAX: 812-948-5047  
e-Mail: info@SAMTEC.com code: 55322

DESCRIPTION:  
ZERO INSERTION FORCE 1mm ASSEMBLY

DWG. NO. ZF1-XX-XX-XX-WT-XX

BY: KEVIN B 9/20/2002 SHEET 4 OF 4