



PUSH-IN LUG

General technical data:

product brand name		SIRIUS
product designation		push-in lugs
Design of the product		push-in lugs
Ambient temperature		
• during operating	°C	-20 ... +70
• during storage	°C	-50 ... +80

Installation/mounting/dimensions:

Width	mm	10
Height	mm	27
Depth	mm	4.7

Certificates/approvals:

Verification of suitability		CE / UL / CSA / CCC
-----------------------------	--	---------------------

**Declaration of
Conformity**

EG-Konf.

Test Certificates[Special Test
Certificate](#)[Type Test
Certificates/Test
Report](#)**Shipping Approval**

ABS

BUREAU
VERITAS

GL



LRS



PRS



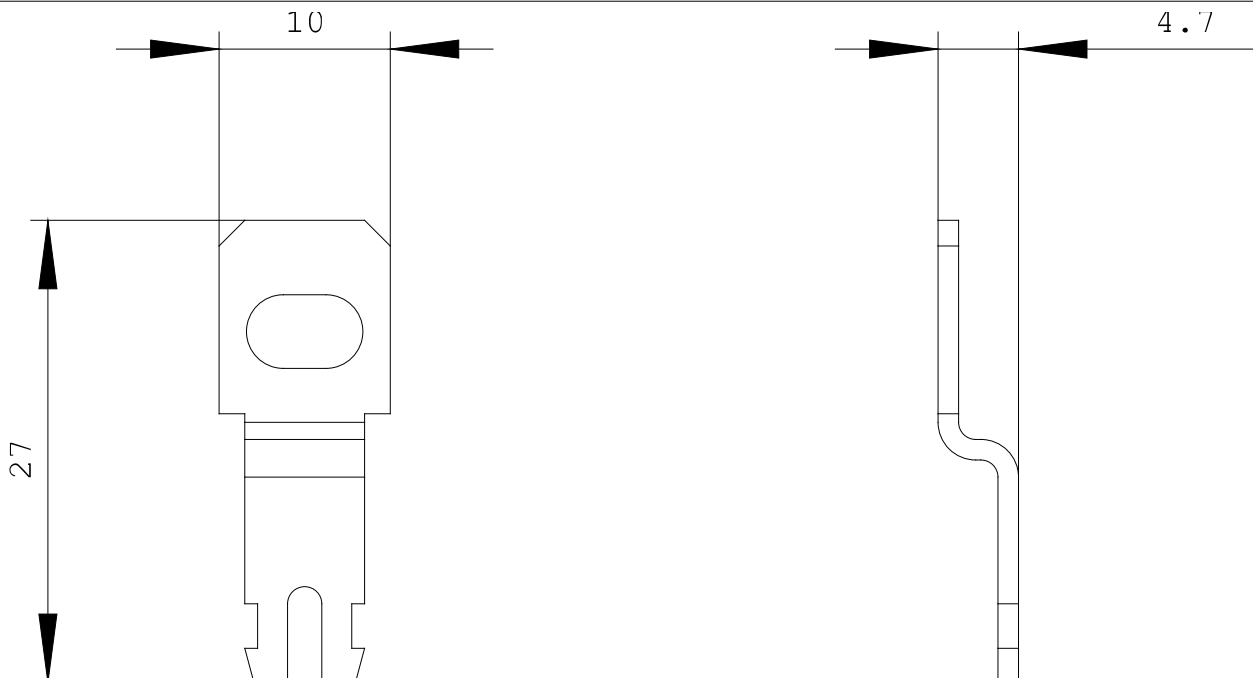
RINA

Shipping Approval**other**

RMRS



VDE

[other](#)**Further information:****Information- and Downloadcenter (Catalogs, Brochures,...)**<http://www.siemens.com/industrial-controls/catalogs>**Industry Mall (Online ordering system)**<http://www.siemens.com/industrial-controls/mall>**CAX-Online-Generator**<http://www.siemens.com/cax>**Service&Support (Manuals, Certificates, Characteristics, FAQs,...)**<http://support.automation.siemens.com/WW/view/en/3RV2928-0B/all>**Image database (product images, 2D dimension drawings, 3D models, device circuit diagrams, ...)**http://www.automation.siemens.com/bilddb/cax_en.aspx?mlfb=3RV2928-0B**last change:**

Jun 5, 2012