

SPECIFICATIONS

Material: HEXSEALS: Silicone rubber conforms to A-A-59588 Class III, GR 60 unless otherwise specified.

Mounting Nut: HEXSEALS: Brass, nickel-plated (unless otherwise noted)

Temperature Range: HEXSEALS: -94°F to +400°F

Pressure Range: Exceeds 15 psi internal and 1500 psi external.

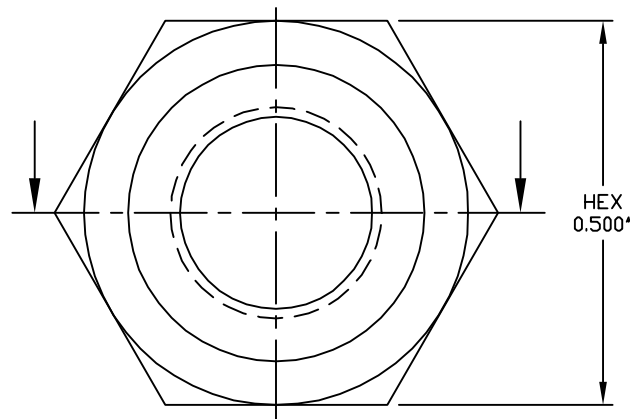
Operational Life: 50,000 actuations (minimum).

Shelf Life: Excess of 25 years.

Resistant to: Salt spray, sunlight, ozone, weather, fungus, and most acids and lubricating oils

Agency Recognition: E-SEEL and HEXSEAL are UL listed to UL Std. 50 types 1-13, and meet CSA standards.

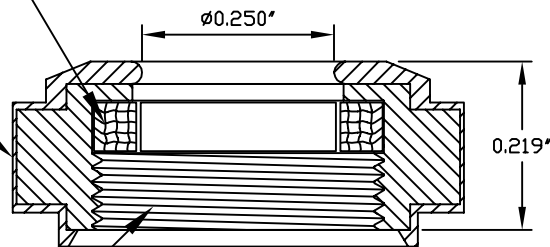
Installation: If a reducing adaptor is required- see page 14 of HEXSEAL catalog HEX200 for part numbers and drawing.



MONEL MESH
PER QQ-N-281 CLASS A
FOR EMI/RFI SUPPRESSION

PERMISSIBLE RUBBER
OVERLAY 0.005 MAX.

3/8-32NEF-2B



G	MAT'L CHANGED and REDRAWN	S. GOK	07.10.09
F	CAD COMPUTER GENERATED		09.23.02
E	SLASH NO. 29, INSERT THREAD WAS 3/8-32 NEF-2B	A. S.	10.17.77
REV.	DESCRIPTION		DATE
<div> <div> MAXIMUM AND MINIMUM MEASUREMENTS ARE STATED DIRECTLY ON EACH DIMENSION. MAT'L: Silicone Rubber conforms to A-A-59588, Gr. 60 FINISH: GRAY </div> <div> <div>TITLE:</div> <div>EMI/RFI BOOT, ROTARY SEAL (N9030x1/4 RFI)</div> <div>APM-HEXSEAL CORPORATION</div> </div> <div> <div>ENG.</div> <div>DWN. N. K. S.</div> <div>CHKD. M. M.</div> </div> <div> <div>SCALE 4 : 1</div> <div>DWG. NO. N9030x1/4 RFI HEXSEAL®</div> </div> </div>			

THIS DRAWING COVERS PROPRIETARY ITEM AND IS THE PROPERTY OF THE APM-HEXSEAL CORPORATION.
THIS DRAWING IS NOT TO BE COPIED OR USED WITHOUT THE WRITTEN APPROVAL OF AN OFFICER OF THE APM-HEXSEAL CORPORATION.

Mouser Electronics

Authorized Distributor

Click to View Pricing, Inventory, Delivery & Lifecycle Information:

[APM HEXSEAL:](#)

[N9030 X 1/4 RFI](#)