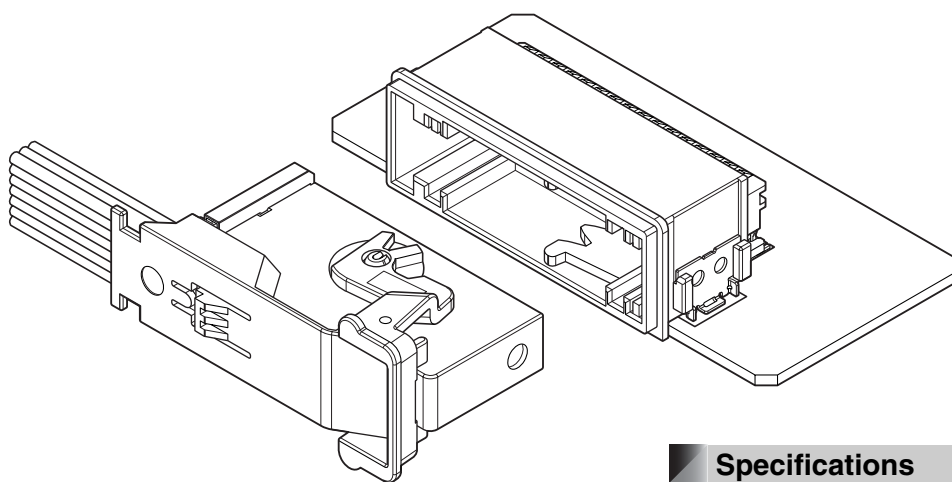


2.54mm pitch, 0.64 unsealed surface mounting type connector with Auto Coplanarity Technology. This technology achieves stable mounting to PCB during re-flow process.



Features

●High Soldering Quality by Auto Coplanarity Technology

- Auto Coplanarity Technology(*1) achieves stable mounting to PCB.
- Self Alignment Effects(*2) enable soldering parts to perform better.

●Terminal Construction

Four contact points and Dual Springs achieve high reliability.

*1. Auto coplanarity technology:

Terminals align to PCB without having influence of PCB warpage or thermal expansion of housing.

*2. Self alignment effects:

Terminals are drawn by surface tension force and align to center position during re-flow process.

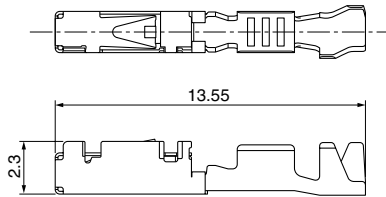
Specifications

- Current rating: 3A AC, DC
- Voltage rating: 14V AC, DC
- Temperature range: -40°C to +100°C
(including temperature rise in applying electrical current)
- Contact resistance: Initial value/20mΩ max.
After environmental testing/20mΩ max.
- Insulation resistance: 100MΩ min.
- Withstanding voltage: 1,000V AC/minute
- Applicable wire: AVSS
0.3mm² to 0.5mm²

* Compliant with ELV/RoHS.

* Contact JST for details.

Female terminal



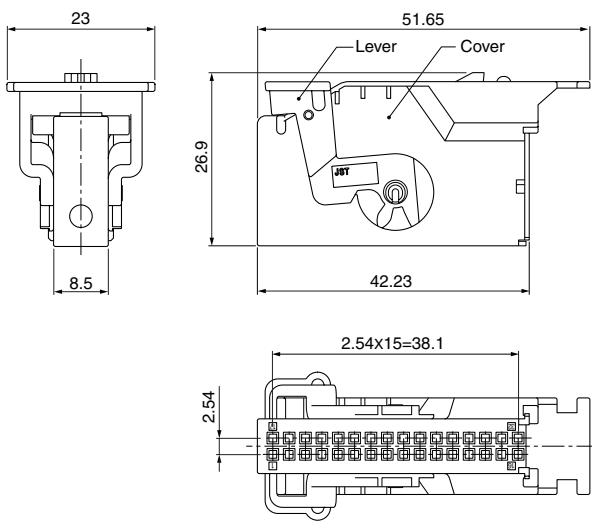
Model No.	Applicable wire range		Q'ty/reel
	Conductor (mm ²)	Insulation O.D. (mm)	
SGIT-B021T-MS0.64	0.3 to 0.5	1.4 to 1.7	9,000

Material and Finish

Terminal box: SUS
Terminal spring: Copper alloy, tin-plated

Female connector

Cover housing assembly



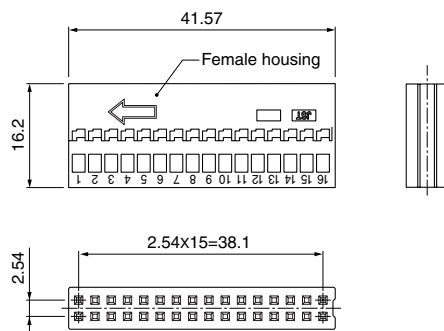
Model No.	Q'ty/box
Note1) 32GIT-CL-1A-()-()	Note 2)

Material

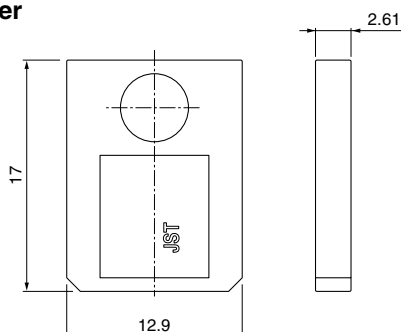
Glass-filled PBT, black

Note: 1. Color/Key codes other than above-mentioned housing are also available.
2. Contact JST for details.

Female housing



Slide cover



Model No.	Q'ty/box
GITR-32H-1A-K	Note)

Material

Glass-filled PBT, black

Note: Contact JST for details.

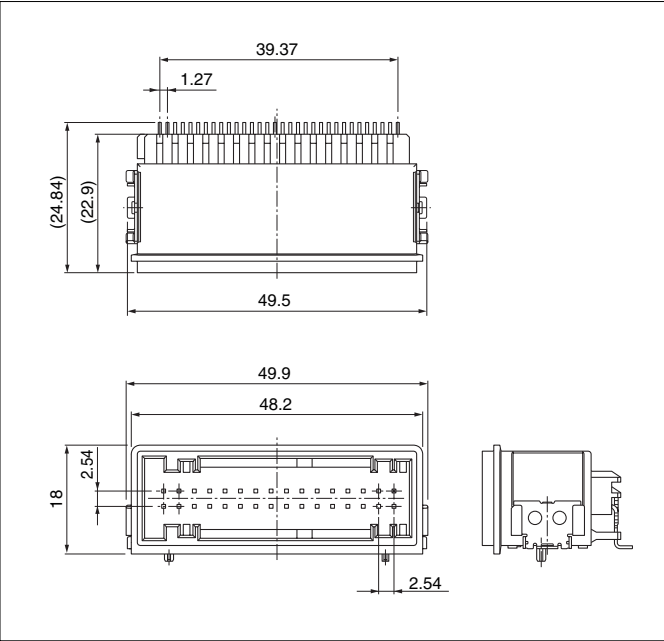
Model No.	Q'ty/box
GITSL-H-2A-K	Note)

Material

Glass-filled PBT, black

Note: Contact JST for details.

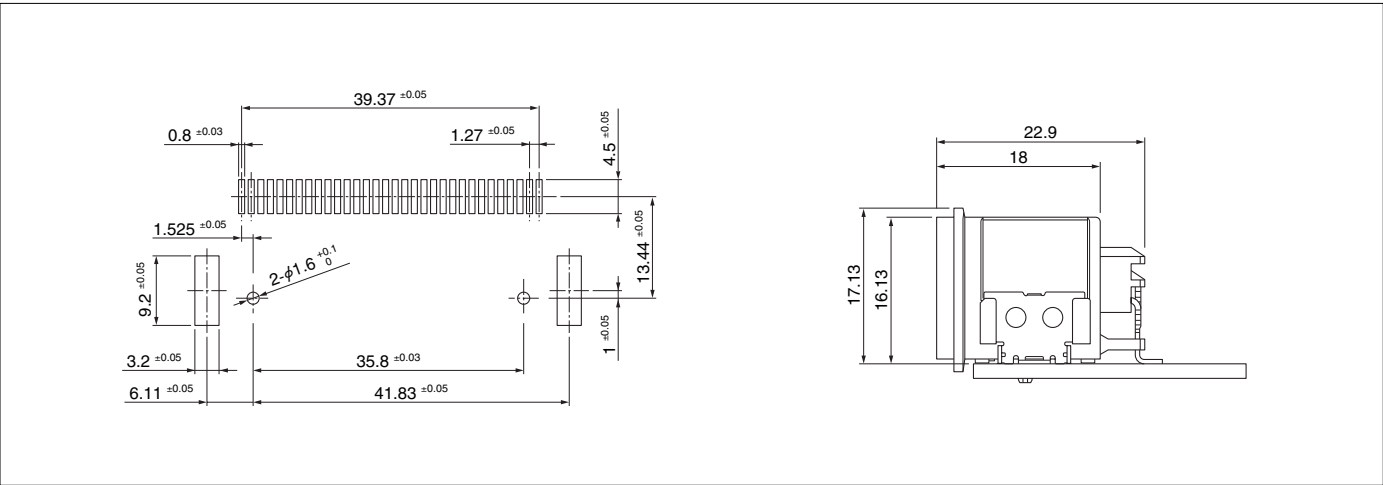
Male connector



Model No.	Q'ty/box
SM32B-ACAK-1A-01M	600
Material and Finish	
Housing: Glass-filled LCP, black	
Terminal: Brass, nickel-undercoated, tin-plated	
Tab: Brass, nickel-undercoated, tin-plated	

Note: 1. This product displays (LF)(SN) on a label.
2. Key codes other than above-mentioned housing are also available.
Contact JST for details.

PC board layout (viewed from component side, Assembly layout



Note: 1. Tolerances are non-cumulative: $\pm 0.05\text{mm}$ for all centers.
2. The dimensions above should serve as guideline. Contact JST for details.

Crimping machine, Applicator

Strip terminal	Crimping machine	Crimp applicator MKS-L	
		Dies	Crimp applicator with dies
SGIT-B021T-MS0.64	AP-K2N	MK/SGIT-B021-064	APLMK SGIT-B021-064

Note: When crimping operation is conducted using an applicator and die set other than the above, JST cannot guarantee the performance of the terminal.