


[Home](#)
[Switches](#)
[Precision Orifices & Accessories](#)
[Regulators, Valves & Comparators](#)
[Distributors](#)
[Contact Us](#)
[Application Notes & Appendices](#)

R-900 SERIES MINIATURE PRECISION PRESSURE REGULATOR – 10-32 PORTS

The R-900 Series regulators are designed for applications requiring miniature size, light weight, and precision. 10-32 ports accommodate a wide range of miniature fittings, including Airtrol Components B-062 and B-125 barbed fittings.

FEATURES:

Twenty turn hysteresis free adjustment allows pressure settings to 1" WC resolution.

Four adjusting styles allow maximum design flexibility. The non-rising stem is available with an attractive knob, or plain, allowing installation of OEM knobs. Also available is a flush adjusting shaft, for applications where pressure setting is changed less frequently. Factory pre-set "tamperproof" models are also available.

Three mounting options include panel mount, through a 9/16" hole (nut included), and base mount, through 4 holes 0.125" dia. and manifold mount(See drawings)

Plastic construction – corrosion resistant wetted materials.

High accuracy – Low effect of supply variation on output.

Low cost – Perfect for OEM applications.

Applications:

Medical Equipment

- Oxygen Concentrators
- Ventilator / Respirators
- Nebulizers



Air Bearings

HVAC Systems

Custom Machinery

Robotics

Options

Oxygen Clean

Factory Pre-set

Factory Installed Fittings

SPECIFICATIONS

ORDERING INFORMATION

MODEL NUMBER

DESCRIPTION

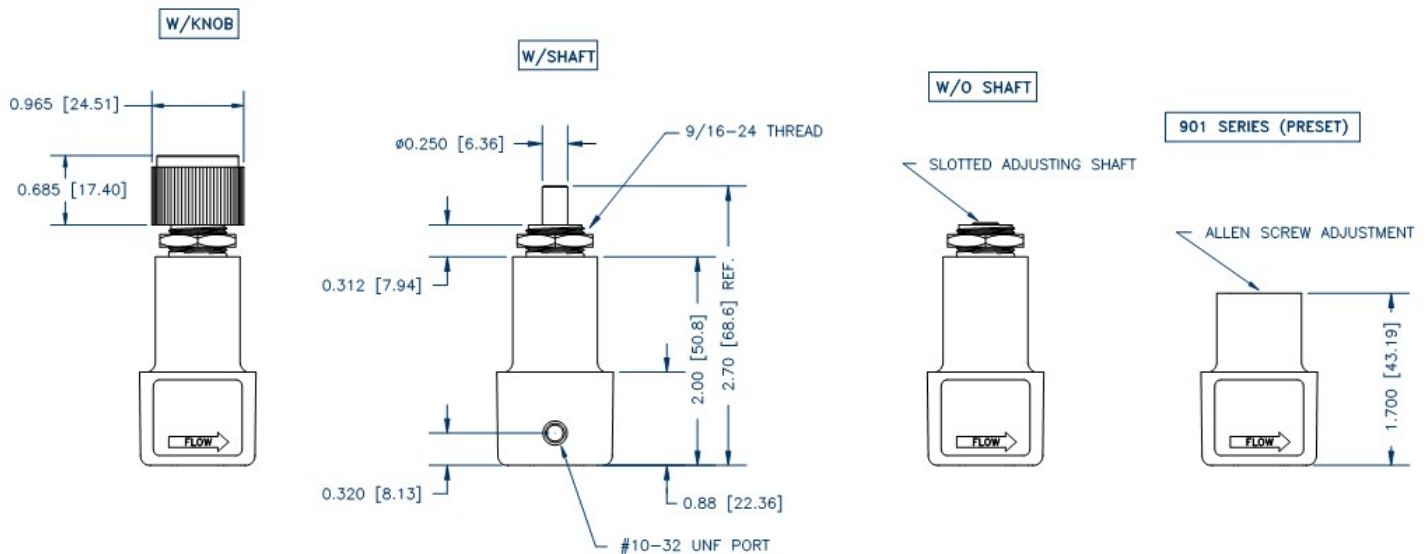
R-900-XX-W/K	Precision regulator with adjusting knob
R-900-XX-W/S	Precision regulator with 1/4" adjusting shaft
R-900-XX-W/OS	Precision regulator with slotted adjusting shaft
R-901-XX	Factory pre-set regulator
R-910-XX-W/K	Non-bleed, non-relieving with adjusting knob
R-910-XX-W/S	Non-bleed, non-relieving with 1/4" adjusting shaft
R-910-XX-W/OS	Non-bleed, non-relieving with slotted adjusting shaft
R-911-XX	Non-bleed, non-relieving, pre-set regulator
R-920-XX-W/K	Non-bleed, relieving with adjusting knob
R-920-XX-W/S	Non-bleed, relieving with 1/4" adjusting shaft
R-920-XX-W/OS	Non-bleed, relieving with slotted adjusting shaft
R-921-XX	Non-bleed, relieving, pre-set regulator

RANGE (PSI)
0.5-3.5
0.5-10
0.5-30
0.5-60
0.5-90

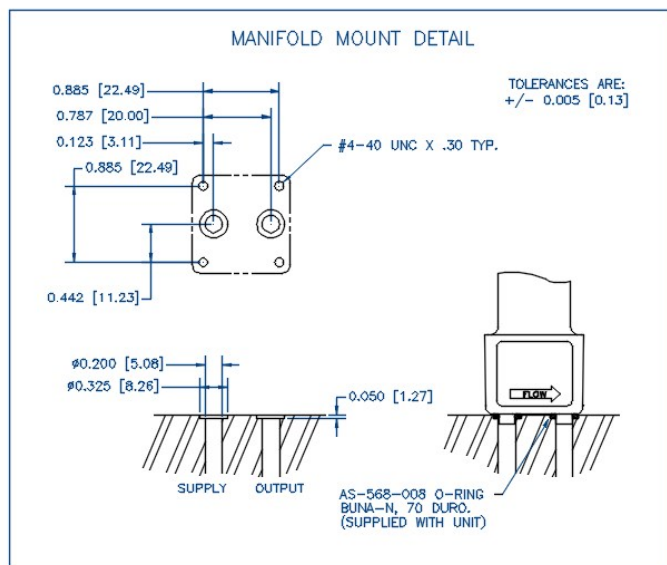
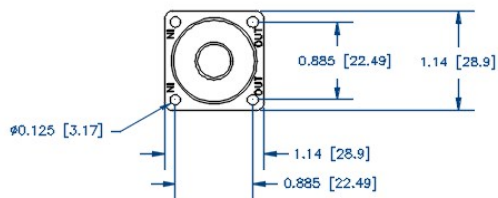
Please specify range when ordering. For factory pre-set models, specify set-point, input pressure, and flow, if not dead-ended.

Note: For manifold mount option, add "M" to part number after range: Ex - R-900-60M-W/S

MOUNTING DIMENSIONS



> [DOWNLOAD MOUNTING SPECIFICATIONS](#) <



[> DOWNLOAD MOUNTING SPECIFICATIONS <](#)

OUR HOME OFFICE

Airtrol Components Inc
17400 West Liberty Lane
New Berlin, WI 53146
USA

HOURS OF OPERATION

Monday – Friday:
8:00am to 5:00pm CST

Saturday & Sunday:
Closed

CONTACT US

Phone: (262) 786-1711
Fax: (262) 786-0211

Email us at:
airtrol@airtrolinc.com

TECHNICAL SUPPORT

For technical support
call toll free at (800) 762-
0758