



Top Page > Products> Encoder > Incremental Type Encoder  
> EC05E Series > EC05E1220401

Related information

Photo   Dimensions   Land Dimensions   Packing Specifications   Soldering Conditions

PRINT

5mm Size Hollow Shaft Type EC05E Series

Detail

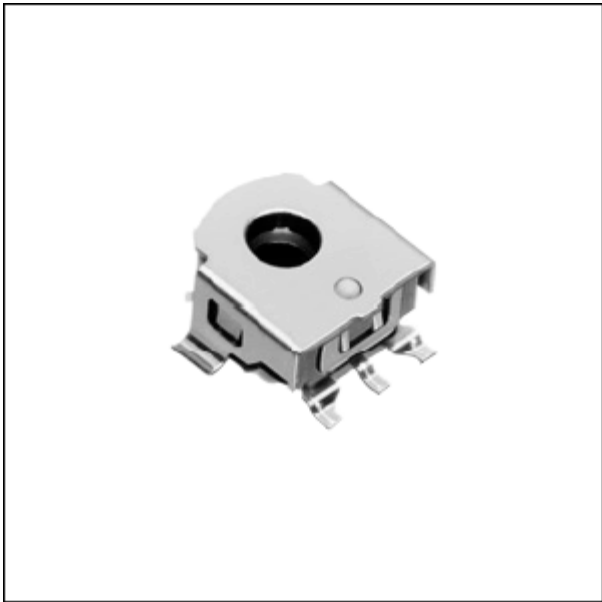
Part number	EC05E1220401
-------------	--------------

Number of detent	12
Number of pulse	12
Operating direction	Vertical
Minimum order unit (pcs.)	16,000

Operating temperature range		-30   to +85
Maximum operating current (Resistive load)		0.55mA
Electrical performance	Ratings	0.55mA 5V DC
	Output signal	Output of A and B signals, proportionate to phase difference
	Insulation resistance	50MΩ min. 50V DC
	Voltage proof	50V AC for 1 minute
Mechanical performance	Detent torque	1.6±1.3mN·m
Resistance to soldering heat	Manual soldering	350   max. 3s max.
	Reflow soldering	Refer to soldering conditions
Durability	Operating life	100,000 cycles
Environmental performance	Cold	-40±3   for 240h
	Dry heat	85±3   for 240h
	Damp heat	40±2   , 90 to 95%RH for 240h

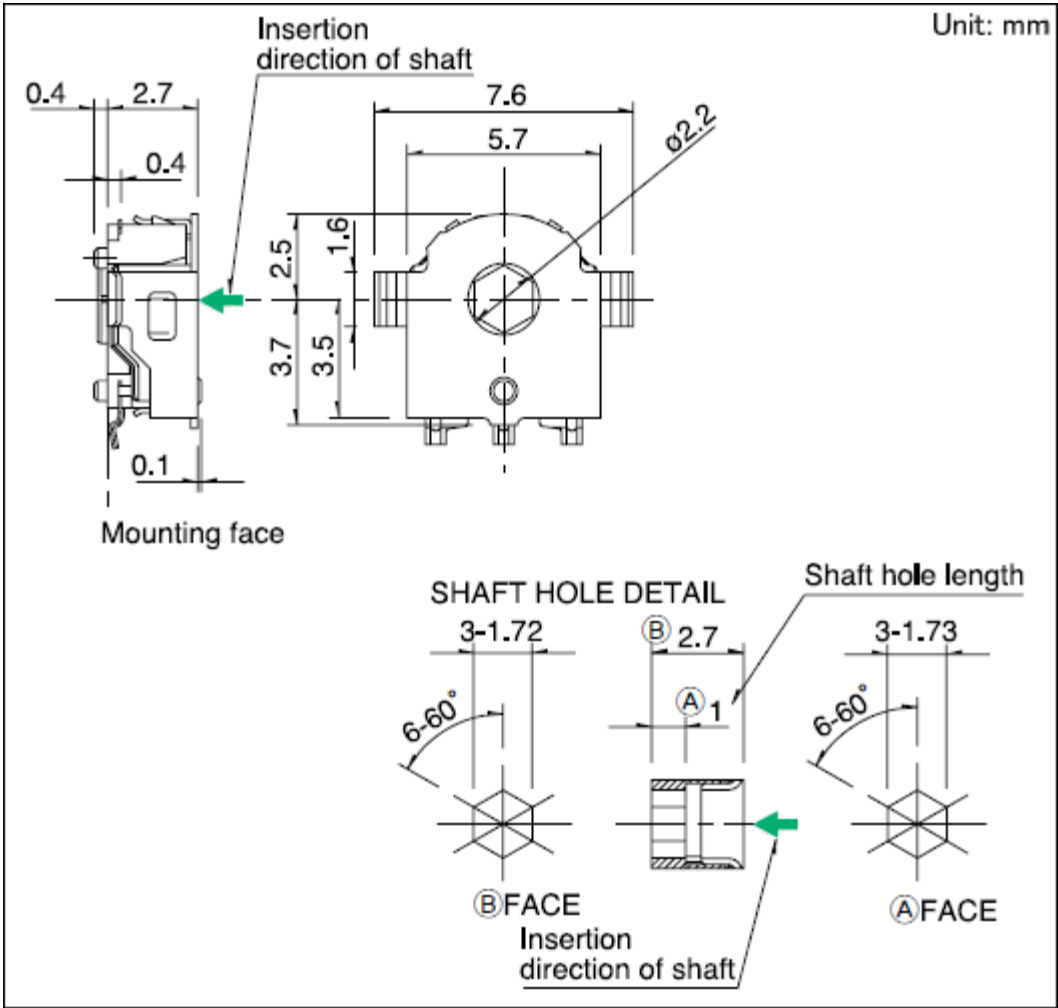
3D CAD (STEP)	Download
Certificate of Compliance to RoHS regulations	PDF

●● Photo

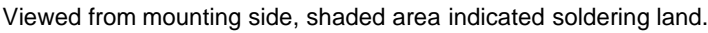


[TOP](#)

●● Dimensions



[TOP](#)



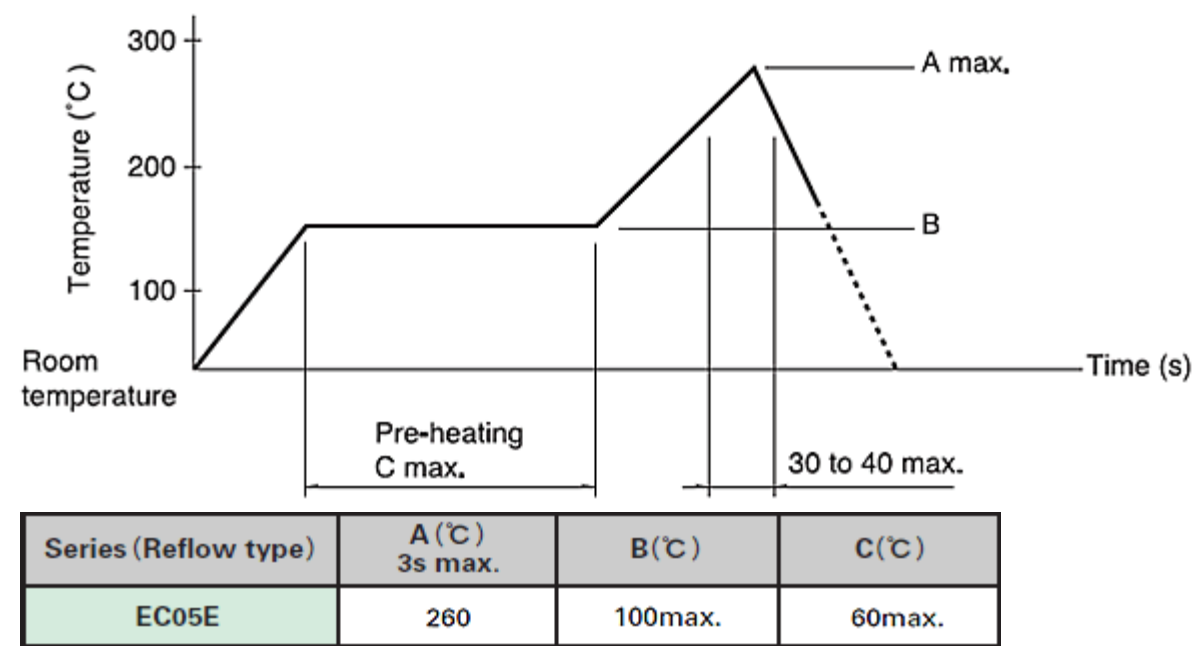
 **TOP**

Number of packages (pcs.)			Tape width (mm)	Export package measurements (mm)
1 reel	1 case /Japan	1 case /export packing		
2,000	8,000	16,000	16	410×485×246

 **TOP**

1. Heating method  
Double heating method with infrared heater.
2. Temperature measurement  
Thermocouple 0.1 to 0.2  $\Phi$  CA (K) or CC (T) at soldering portion (copper foil surface). A heat resisting tape should be used for fixed measurement.
3. Temperature profile

- (1) The condition mentioned above is the temperature on the mounting surface of a PC board. There are cases where the PC board's temperature greatly differs from that of the switch, depending on the PC board's material, size, thickness, etc. Care should be taken to prevent the switch's surface temperature from exceeding 260 .
- (2) Soldering conditions differ depending on reflow soldering machines. Prior verification of soldering condition is highly recommended.



[TOP](#)

**NOTE** Notes are common to this series/models.

1. This site catalog shows only outline specifications. When using the products, please obtain formal specifications for supply.
2. Please place purchase orders per minimum order unit (integer).

**Inquiries about Products**  
For more information please contact: Products Information Center.  
1-7, Yukigaya-otsukamachi, Ota-ku, Tokyo, 145-8501, Japan  
Phone: +81 (3) 5499-8154