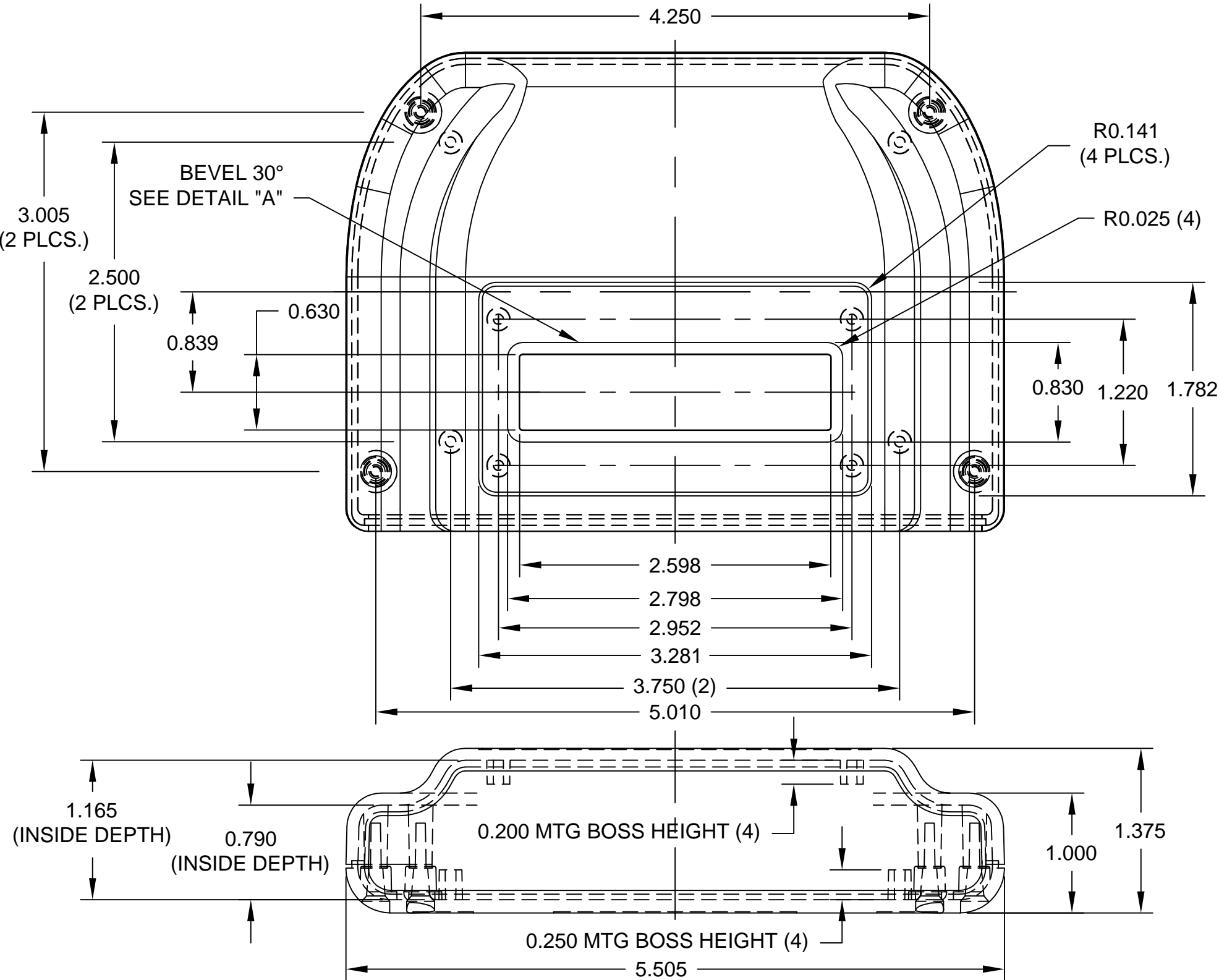
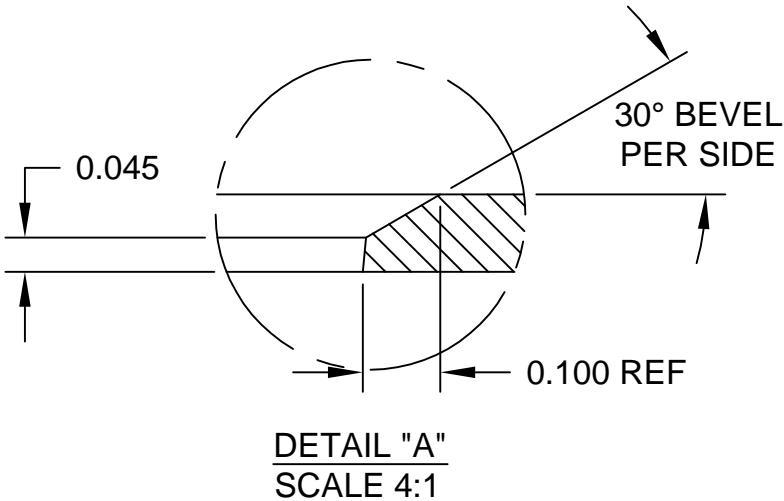
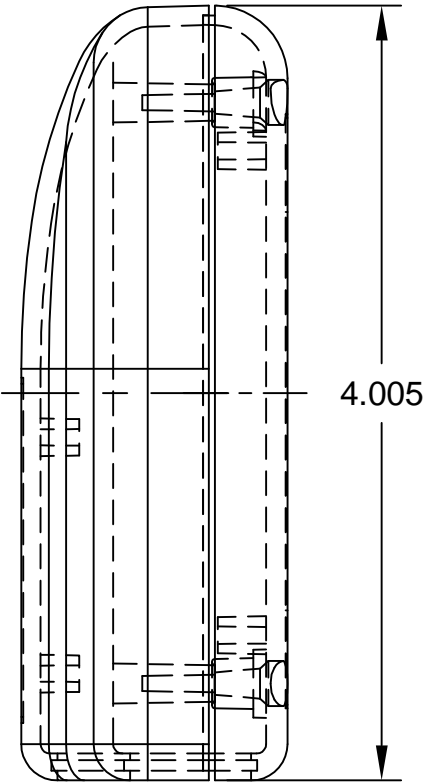
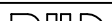


DWG. NO.	PT-11754-DW
ISSUE	REVISIONS

- NOTES:
- 1) PC BOARD BOSSES WILL ACCEPT A #4 X 1/4" THREAD FORMING SCREW
 - 2) MATERIAL: ABS - UL94-5VA
 - 3) FINISH: BLACK TEXTURE
 - 4) DIMENSIONS ARE TO THEORETICAL SHARP CORNERS.
 - 5) INCLUDES (4) #4-24 x 5/8 HI-LOW THREAD FORMING, CSK, OVAL HEAD, PHILLIPS DRIVE SCREWS FOR ATTACHING BODY TO COVER (MAX TORQUE 4.5 IN-LBS)



			ITEM	REQ'D.	PART NO.	DESCRIPTION	
<u>TOLERANCES:</u> ±.005 BETWEEN HOLE CENTERS ±.015 FROM SHEARED EDGE ±.032 FROM A BENT SURFACE ±.063 BETWEEN ASSEMBLED SURFACES UNLESS OTHERWISE SPECIFIED			MAT: AS NOTED		SCALE:		NAME:
			FINISH: SEE SPEC.		 BUD INDUSTRIES, INC. WILLOUGHBY, OHIO		PLASTIBOX STYLE I WITH DISPLAY WINDOW
			DR. DP	5-23-05			
			CH.				
			QTY.	USED ON	APP.		

Mouser Electronics

Authorized Distributor

Click to View Pricing, Inventory, Delivery & Lifecycle Information:

[Bud Industries:](#)

[PT-11754-DW](#)