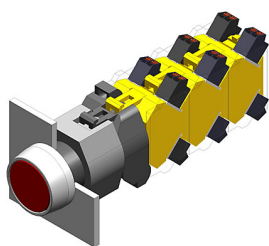


# EAO – Your Expert Partner for Human Machine Interfaces

## 704.030.2 - Illuminated pushbutton actuator

### 704.030.2 - Illuminated pushbutton actuator



*Attention: The preview is based on a sample product. This can differ from your current configuration.*

#### Mounting

Mounting cut-out	Ø 22.5 mm
Design	raised

#### Front

Front shape	round
Front dimension	Ø 29 mm
Front ring material	Plastic
Front ring colour	grey

#### Other Attributes

Weight	0.056 kg
--------	----------

#### Operating-/Indication part

Lens optics	transparent
Lens material	Plastic
Lens colour	red
Lens profile	flat

#### IP-Rating

Front protection	IP 65
------------------	-------

#### Connection Method

Terminal	Screw
----------	-------

#### Actuator

Switching action	Momentary
Housing material	Plastic
Housing colour	grey

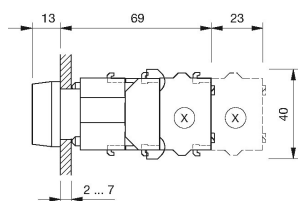
#### Function

Illuminated pushbutton
------------------------

# EAO – Your Expert Partner for Human Machine Interfaces

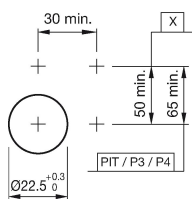
## 704.030.2 - Illuminated pushbutton actuator

### Dimensions



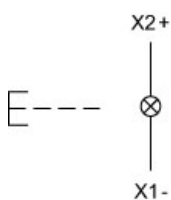
X = Screw terminal

### Mounting cut-outs



PIT = Push-in terminal

### Wiring diagram



### Additional information

Frontring with protective cover to be mounted with a torque of 40 Ncm onto actuator  
Max. 3 switching elements can be clipped on

### Legend

Switching action: B = Momentary