

## BNC Cable Assemblies

RFC6T, RFA6T,  
RFB6T, RF179



SERIES	END 1 CONNECTOR	END 2 CONNECTOR	OVERALL LENGTH
<b>RFC6T*</b> = 12G-SDI, Belden 4694R Cable	<b>-74SP3</b> = 75 Ω BNC Straight Plug		<b>-“XXXX”</b> = Overall Length in millimeters
<b>RFA6T</b> = RG 6 Cable	<b>-D4SP3</b> = 75 Ω BNC Die Cast Straight Plug (RFA6T, RFB6T, RF179 only)		-0300 (300 mm) 11.81" minimum (RFA6T, RFB6T, RFC6T)
<b>RFB6T</b> = Belden 1694A Cable	<b>-74BJ3</b> = 75 Ω BNC Bulkhead Jack (RF179 only)		-0100 (100 mm) 3.94" minimum (RF179)
<b>RF179</b> = RG 179 Cable	<b>-74RP3</b> = 75 Ω BNC Right-angle Plug (RFA6T, RFB6T, RFC6T only)		

### ALSO AVAILABLE

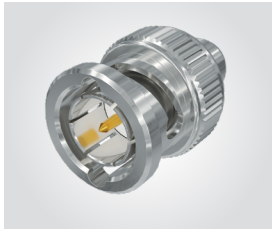
75 Ω: DIN 1.0/2.3, HDBNC = RFA6T, RFB6T, RFC6T

75 Ω: DIN 1.0/2.3, SMB, MCX, MMCX = RF179

\*Designed to meet SMPTE 2082  
12G-SDI specifications.

## BNC Cable Connectors

BNC7T-CA



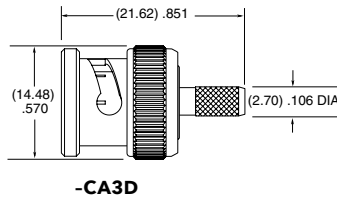
Supplied with pins, washers,  
nuts, gaskets and ferrules.  
See website for dimensions.

CONNECTORS FOR INDUSTRY STANDARD CABLES	
**BNC7T-P-C-GN-ST-CA3	Machined, RG 179 Cable
**BNC7T-P-C-GN-RA-CA3	Machined, RG 179 Cable
**BNC7T-P-C-GN-ST-CA6	*Machined, RG 6 Cable
**BNC7T-P-C-GN-RA-CA6	*Machined, RG 6 Cable
**BNC7T-P-C-GN-ST-CA6B	Belden 4694R Cable
**BNC7T-P-C-GN-RA-CA6B	Belden 4694R Cable
**BNC7T-J-C-GN-ST-BH3	Machined, Bulkhead, RG 179 Cable
BNC7T-P-C-GN-ST-CA3D	Die Cast, RG 179 Cable
BNC7T-P-C-GN-ST-CA6D	Die Cast, RG 179 Cable

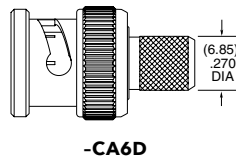
\*\*Add "-B" to the end of the part number for bulk packaging

\*Designed to meet SMPTE 2082 12G-SDI specifications.

P-C = Cable Plug  
J-C = Cable Jack  
GN = Plating (10 μ" Gold on contact,  
Nickel on outer contact and shell)  
ST = Straight  
RA = Right-angle

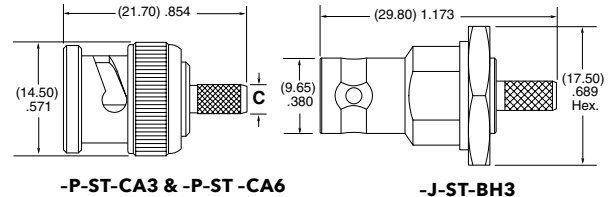


-CA3D



-CA6D

DIE CAST



-P-ST-CA3 & -P-ST-CA6

-J-ST-BH3

MACHINED

**Note:**  
Additional plating options available  
on Cable Assemblies, Cable  
Connectors and Board Connectors.  
Contact RFGroup@samtec.com

TERMINATION	C (DIA)
-CA3	(2.70) .106
-CA6	(6.85) .270

## 75 Ω DIE CAST BNC TO 12 GHz

### BNC Board Connectors

BNC7T-TH, BNC7T-BH, BNC7T-BM, BNC7T-EM

#### Cable Mates:

RF179, RFA6T, RFB6T, RFC6T, GRF7H-C



BNC7T	GENDER	TYPE	PLATING	ORIENTATION	TERMINATION	PACKAGING
	<b>-J</b> = Jack	<b>-P</b> = PCB Mount	<b>-GN</b> = 10 μ" (0.25 μm) Gold contact, 100 μ" (2.54 μm) Nickel Shell	<b>-ST</b> = Straight  <b>-RA</b> = Right-angle Bulkhead/Panel Mount	<b>-TH2D</b> = Tall Through-hole Die Cast (-ST only)  <b>-BH2D*</b> = Low Profile Die Cast Bulkhead Through-hole (-RA only)  <b>-BM1D*</b> = Low Profile Die Cast Bulkhead Mixed Technology for (1.60 mm) .062" PCB (-RA only)  <b>-BM2D*</b> = Low Profile Die Cast Bulkhead Mixed Technology for (3.18 mm) .125" PCB (-RA only)  <b>-EM1D*</b> = Edge Mount Die Cast Bulkhead/Panel Mount for (1.60 mm) .062" PCB (-ST only)  <b>-EM2D*</b> = Edge Mount Die Cast Bulkhead/Panel Mount for (2.40 mm) .093" PCB (-ST only)	Leave blank for individually bagged.  <b>-B</b> = Bulk packaged (-BH2D only)
	<p><b>-RA-BM1D (BALANCED FOR PICK-AND-PLACE)</b></p>					
	<p><b>-RA-BH2D</b></p>					
	<p><b>-ST-EM1D &amp; -ST-EM2D</b></p>					
	<p><b>-ST-TH2D</b></p>					

**Notes:**  
Contact RFGroup@samtec.com for 12G-SDI PCB mount launch characteristics.

Designed to meet SMPTE 2082 12G-SDI specifications.

Additional plating options available on Board Connectors. Contact RFGroup@samtec.com

\*Lock washers & knurled nuts supplied with bulkhead/panel mount options

## 75 Ω MACHINED BNC TO 12 GHz

### BNC Board Connectors

BNC7T-TH, BNC7T-BH, BNC7T-EM

#### Cable Mates:

RF179, RFA6T, RFB6T, RFC6T, GRF7H-C



BNC7T	GENDER	TYPE	PLATING	ORIENTATION	TERMINATION	PACKAGING
	<b>-J</b> = Jack	<b>-P</b> = PCB Mount	<b>-GN</b> = 10 μ" (0.25 μm) Gold contact, 100 μ" (2.54 μm) Nickel Shell	<b>-ST</b> = Straight  <b>-RA</b> = Right-angle Bulkhead/Panel Mount	<b>-TH1</b> = Standard Through-hole (-ST only)  <b>-BH1*</b> = Standard Bulkhead Through-hole (-RA only)  <b>-EM1*</b> = Edge Mount Bulkhead/Panel Mount for (1.60 mm) .062" PCB (-ST only)  <b>-EM2*</b> = Edge Mount Bulkhead/Panel Mount for (2.40 mm) .093" PCB (-ST only)	Leave blank for individually bagged.  <b>-B</b> = Bulk packaged (-BH1 only)
	<p><b>-ST-EM1 &amp; -ST-EM2</b></p>					
	<p><b>-ST-TH1</b></p>					
	<p><b>-RA-BH1</b></p>					

**Notes:**  
Contact RFGroup@samtec.com for 12G-SDI PCB mount launch characteristics.

Designed to meet SMPTE 2082 12G-SDI specifications.

Additional plating options available on Board Connectors. Contact RFGroup@samtec.com

\*Lock washers & knurled nuts supplied with bulkhead/panel mount options