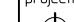


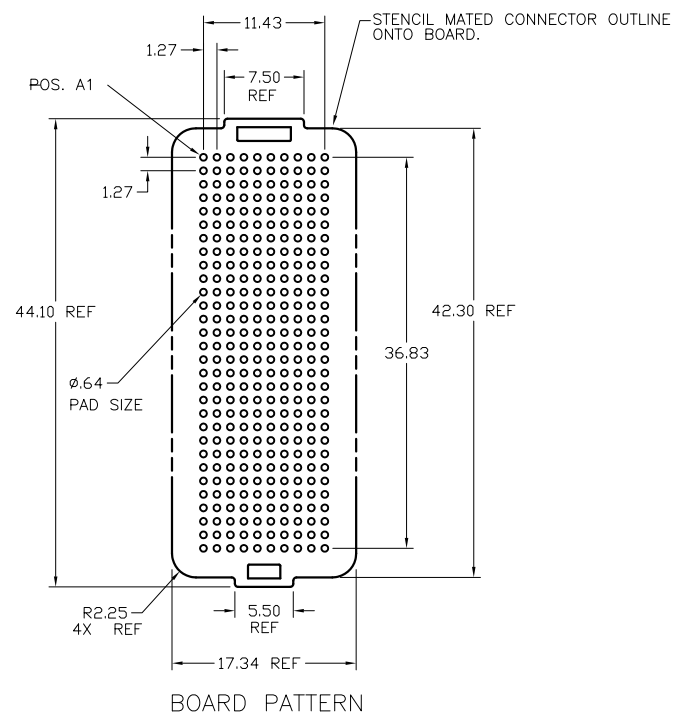
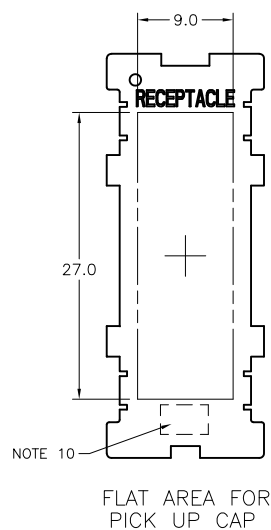


mat'l. code SEE NOTE 1				surface ASME Y14.5 ✓		tolerance ASME Y14.5		projection 		product family MEG-ARRAY			
lfr	ecn no	dr	date	tolerances unless otherwise specified					title				
H	V06-0560	LP	2006-07-13	angles	lead in	X*3			5.5mm RECEPTACLE ASSEMBLY				
J	V06-1173	LP	2006-12-11			XX*13		10 X 30 = 300 POSITIONS					
K	V11-0030	HTB	2011-06-15	0° ±2°		XXX*051		scale	3:1	dwg no			
L	V12-0030	SJ	2012-08-06	dr	D. WAUGHEN		1999-02-23			sheet 1 of 4		size	
M	V12-0042	DCH	2012-11-15	engr	D. HARPER		1999-02-23			84502		A	
N	-	-	-	chr	D. HARPER		1999-02-23						
G	V04-0940	VS	2004-10-18	appd	D. HARPER		1999-02-23			type		CUSTOMER Drawing	
sheet index	revision	M	M	M	M								
	sheet	1	2	3	4								

PRODUCT NUMBER	PICK-UP CAP (NATURAL OR BLACK COLOR)	CONTACT PLATING AND THICKNESS	SOLDER BALL	NOTES
84502-001	YES	15μ" (0.38μm) Au	SnPb	
84502-001LF	YES	15μ" (0.38μm) Au	LEAD FREE	6
84502-091	YES	15μ" (0.38μm) GXT	SnPb	
84502-091LF	YES	15μ" (0.38μm) GXT	LEAD FREE	6
84502-101	YES	30μ" (0.76μm) Au	SnPb	
84502-101LF	YES	30μ" (0.76μm) Au	LEAD FREE	6
84502-191	YES	30μ" (0.76μm) GXT	SnPb	
84502-191LF	YES	30μ" (0.76μm) GXT	LEAD FREE	6
84502-201	YES	50μ" (1.27μm) Au SPECIAL	SnPb	7 AND 8
84502-201LF	YES	50μ" (1.27μm) Au SPECIAL	LEAD FREE	6, 7 AND 8
84502-291	YES	50μ" (1.27μm) GXT SPECIAL	SnPb	7 AND 8
84502-291LF	YES	50μ" (1.27μm) GXT SPECIAL	LEAD FREE	6, 7 AND 8
84502-A01	YES	30μ" (0.76μm)	SnPb	9
84502-A01LF	YES	30μ" (0.76μm)	LEAD FREE	6 & 9
84502-301	YES	15μ" (0.38μm) Au SPECIAL	SnPb	9
84502-301LF	YES	15μ" (0.38μm) Au SPECIAL	LEAD FREE	6 & 9
84502-401	YES	30μ" (0.76μm) Au SPECIAL	SnPb	9
84502-401LF	YES	30μ" (0.76μm) Au SPECIAL	LEAD FREE	6 & 9
84502-501	YES	Au SPECIAL	SnPb	7, 8 & 9
84502-501LF	YES	Au SPECIAL	LEAD FREE	6, 7, 8 & 9

[illegible]



Copyright FCI



FCI
FCIconnect.com



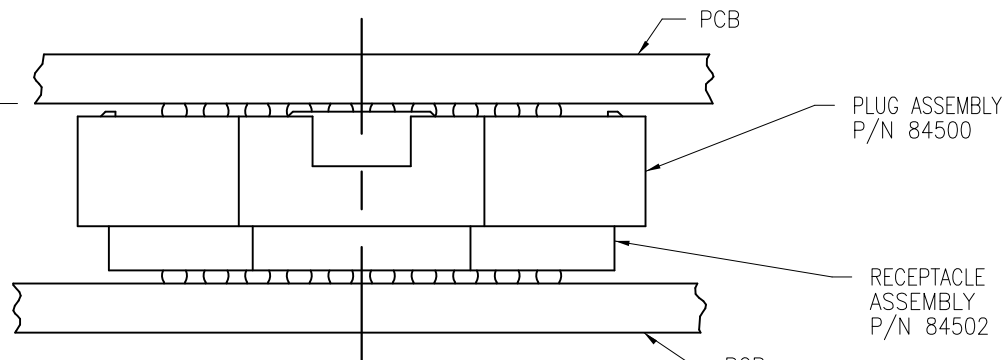
1 2

3

4

PRODUCT NUMBER
SEE TABLE-SHEET 2

5.5 REF
MATED HEIGHT
AFTER REFLOW
SEE NOTE 3



MATED HEIGHT AFTER REFLOW IS BASED ON $\phi.64\text{mm}$ PAD (METAL-DEFINED)
AND $.13\text{mm}$ SOLDER PASTE STENCIL THICKNESS. SEE NOTE 3.
END VIEW - MATED CONNECTORS

NOTES:

①. MATERIAL:

HOUSING: LCP
CONTACT: COPPER ALLOY

PLATING:

CONTACT: (SEE TABLE ON SHEET 2)
SOLDER BALL: (SEE TABLE ON SHEET 2)
EUTECTIC SnPb OR LEAD FREE
95.5Sn/4Ag/0.5Cu

②. SOLDER BALLS WILL NOT BE PERFECT SPHERICAL SHAPE
DUE TO REFLOW ATTACHMENT.

③. MATED HEIGHT EFFECTED BY CUSTOMER'S PCB PAD SIZE, PLATING,
SOLDER REFLOW PROFILE, & SOLDER PASTE.

④. KNIT LINE: SLIGHT VISIBLE MARKS (USUALLY A LINE) INDICATING
THE DIRECTION AND MEETING POINT OF PLASTIC RESIN FLOW
FRONTS TRAVELING AROUND ANY OBSTRUCTIONS TO THE RESIN
FLOW VIA THE REQUIRED MOLD TOOLING.


⑤. FOR PROPER APPLICATION FOLLOW FCI APPLICATION
SPECIFICATION GS-20-033 LEAD FREE SOLDER BALLS WILL
NOT SOLDER PROPERLY IN A LEADED SOLDER PROCESS
DUE TO A HIGHER REFLOW TEMPERATURE. LEAD FREE
PRODUCT IS THEREFORE NOT BACKWARDS COMPATIBLE WITH
LEADED OR SOME SOLDERING APPLICATIONS. REFERENCE
FCI APPLICATION SPECIFICATION

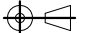

⑥. THIS PRODUCT MEETS EUROPEAN UNION DIRECTIVES AND
OTHER COUNTRY REGULATIONS AS DESCRIBED IN GS-47-0004
PRODUCT MEETING THIS DIRECTIVE IS IDENTIFIED IN THE LOT
CODE NUMBER MARKED ON EACH PART BY HAVING AN "X"
IN THE SEVENTH CHARACTER POSITION.

⑦. PLATING FOR INDICATED -2XX SERIES PRODUCT NUMBERS MEET
THE REQUIREMENTS OF GR-1217-CORE,
CENTRAL OFFICE ENVIRONMENT, (25 YEAR LIFE EXPECTANCY).
AND INCLUDES SPECIAL CONTACT GEOMETRY.

⑨. 84502-A01 AND -A01LF ARE CUSTOMER SPECIALS.

⑩. CURRENT COMPANY LOGO TO BE VISIBLE IN
APPROXIMATE AREA SHOWN.

12. A  SYMBOL WILL BE NEXT TO ANY DIMENSION, NEW VIEW OR
NOTE WHICH HAS BEEN MODIFIED WITH THE CURRENT DRAWING REVISION

mat'l. code				surface		tolerance	projection	product family	
SEE NOTE 1				ASME Y14.5		ASME Y14.5		MEG-ARRAY	
ltr	ecr no	dr	date	tolerances unless otherwise specified				title	
M				angles	radius	xx+3		5.5mm RECEPTACLE ASSEMBLY	
						XX+13	MM	10 X 30 = 300 POSITIONS	
				0° ±2°		XXX+051	scale 5:1	dwg no	sheet 3 of 4 size
				dr	D. WAUGHEN	1999-02-23		84502	
				engr	D. HARPER	1999-02-23		A4	
				chr	D. HARPER	1999-02-23		type	
				appd	D. HARPER	1999-02-23		CUSTOMER Drawing	
sheet index	revision sheet								

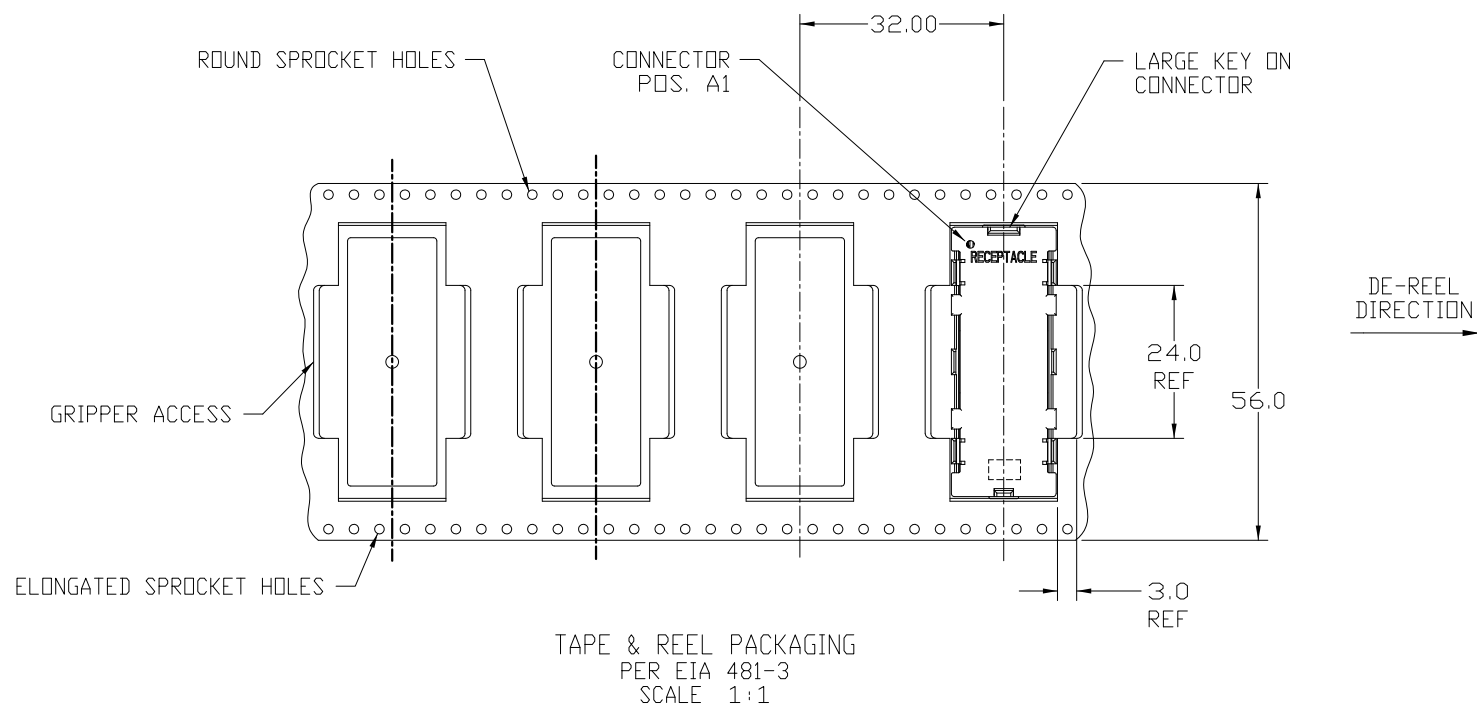
form: A4mmXlc

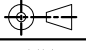

1

2

3

4

PRODUCT NUMBER
 SEE TABLE-SHEET 2


mat'l. code SEE NOTE 1				surface ASME Y14.5	tolerance ASME Y14.5	projection 	product family MEG-ARRAY
ltr	ecr no	dr	date	tolerances unless otherwise specified		MM 1:1	title 5.5mm RECEPTACLE ASSEMBLY 10 X 30 = 300 POSITIONS
M				angles	X+3 XX+13		dwg no 84502 sheet 4 of 4 size A4
				0° ±2°	XXX+051		
				dr	D. WAUGHEN 1999-03-11		
				engr	D. HARPER 1999-03-11		type CUSTOMER Drawing
				chr	D. HARPER 1999-03-11		
				appd	D. HARPER 1999-03-11		
sheet index	revision sheet						

Mouser Electronics

Authorized Distributor

Click to View Pricing, Inventory, Delivery & Lifecycle Information:

FCI:

84502-101