

**Product number C10271\_LEDILSTAR-P-S**

|                 |                   |             |            |
|-----------------|-------------------|-------------|------------|
| Family          | LedilStar         | FWHM        | 12 degrees |
| Type            | Lens              | Efficiency  | -          |
| LED             | Ostar Projection  | cd/Im       | -          |
| Color           | Clear             | Gerber File | Available  |
| Diameter        | 35 mm             |             |            |
| Height          | 24.6 mm           |             |            |
| Style           | Round             |             |            |
| Optic Material  | PMMA              |             |            |
| Holder Material | -                 |             |            |
| Fastening       | ["screw", "glue"] |             |            |
| Status          | Production ready  |             |            |

**Product number CP10317\_LEDILSTAR-P-SUB**

|                 |                   |             |            |
|-----------------|-------------------|-------------|------------|
| Family          | LedilStar         | FWHM        | 14 degrees |
| Type            | Assembly          | Efficiency  | -          |
| LED             | Ostar Projection  | cd/Im       | -          |
| Color           | Clear             | Gerber File | Available  |
| Diameter        | 35 mm             |             |            |
| Height          | 26.2 mm           |             |            |
| Style           | Round             |             |            |
| Optic Material  | PMMA,PMMA         |             |            |
| Holder Material | -                 |             |            |
| Fastening       | ["screw", "glue"] |             |            |
| Status          | Production ready  |             |            |

**Product number C10270\_LEDILSTAR-P-W**

|                 |                   |             |            |
|-----------------|-------------------|-------------|------------|
| Family          | LedilStar         | FWHM        | 32 degrees |
| Type            | Lens              | Efficiency  | -          |
| LED             | Ostar Projection  | cd/Im       | -          |
| Color           | Clear             | Gerber File | Available  |
| Diameter        | 35 mm             |             |            |
| Height          | 24.6 mm           |             |            |
| Style           | Round             |             |            |
| Optic Material  | PMMA              |             |            |
| Holder Material | -                 |             |            |
| Fastening       | ["glue", "screw"] |             |            |
| Status          | Production ready  |             |            |

**NOTE: The typical divergence will be changed by different color, chip size and chip position tolerance. The typical total divergence is the full angle measured where the luminous intensity is half of the peak value.**



## PRODUCT DATASHEET

### LedilStar series

last update 25/4/2014

#### GENERAL INFORMATION

- Product series especially designed & optimized for Ostar Projection series of LEDs.
- Special care taken to make light distribution as uniform as possible.
- Lens material optical grade PMMA with high UV and temperature resistance. Allows use of high current and temperature conditions.

Please find more information about used material from below:

[http://ledil.fi/sites/default/files/Documents/Technical/Material/PMMA%20N%20UL94\\_Yellow%20Card.pdf](http://ledil.fi/sites/default/files/Documents/Technical/Material/PMMA%20N%20UL94_Yellow%20Card.pdf)

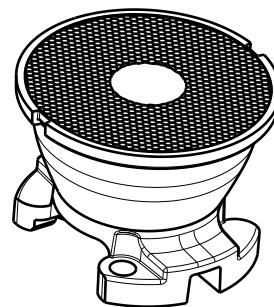
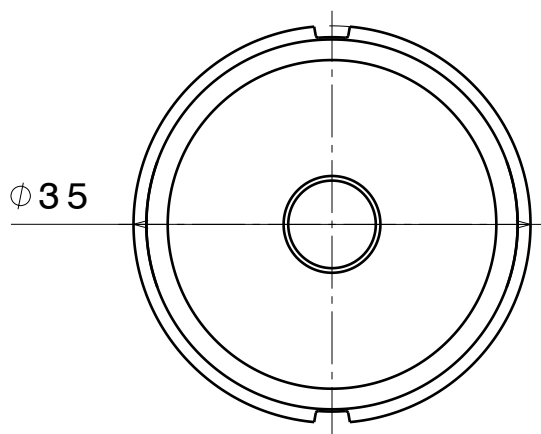
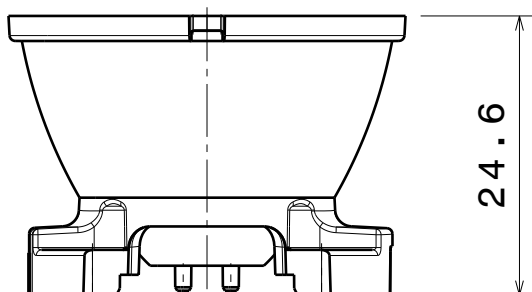
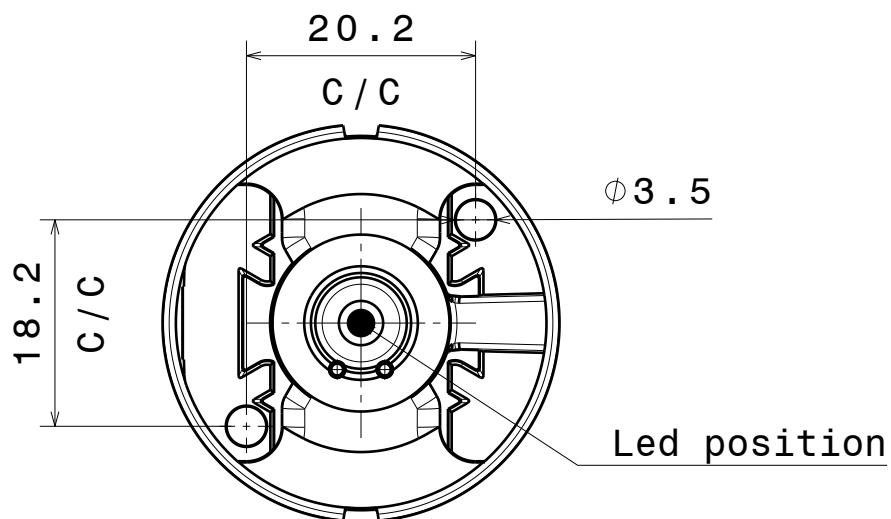
<http://ledil.fi/sites/default/files/Documents/Technical/Material/PMMA%20N%20PLEXIGLAS-Datasheet.pdf>

D

C

B

A



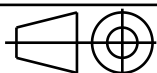
Isometric view 1:1

Tolerances if not otherwise shown  
According to DIN ISO 2768-1  
Linear measures:  
Up to 30mm class M, otherwise class C.  
According to DIN ISO 2768-2  
Form and position: class L

LEDiL

Ledil Oy  
Salorankatu 10  
FIN 24240 SALO  
Finland

THIRD ANGLE PROJECTION:



DRAWING TITLE

Datasheet\_Ledilstar-P

This drawing is the property  
of LEDiL Oy. It may not be  
reproduced, copied or  
communicated without a written  
agreement with LEDiL Oy."

SIZE

A4

PART NUMBER

-

SCALE

3:2

WEIGHT

-

SHEET

1/1

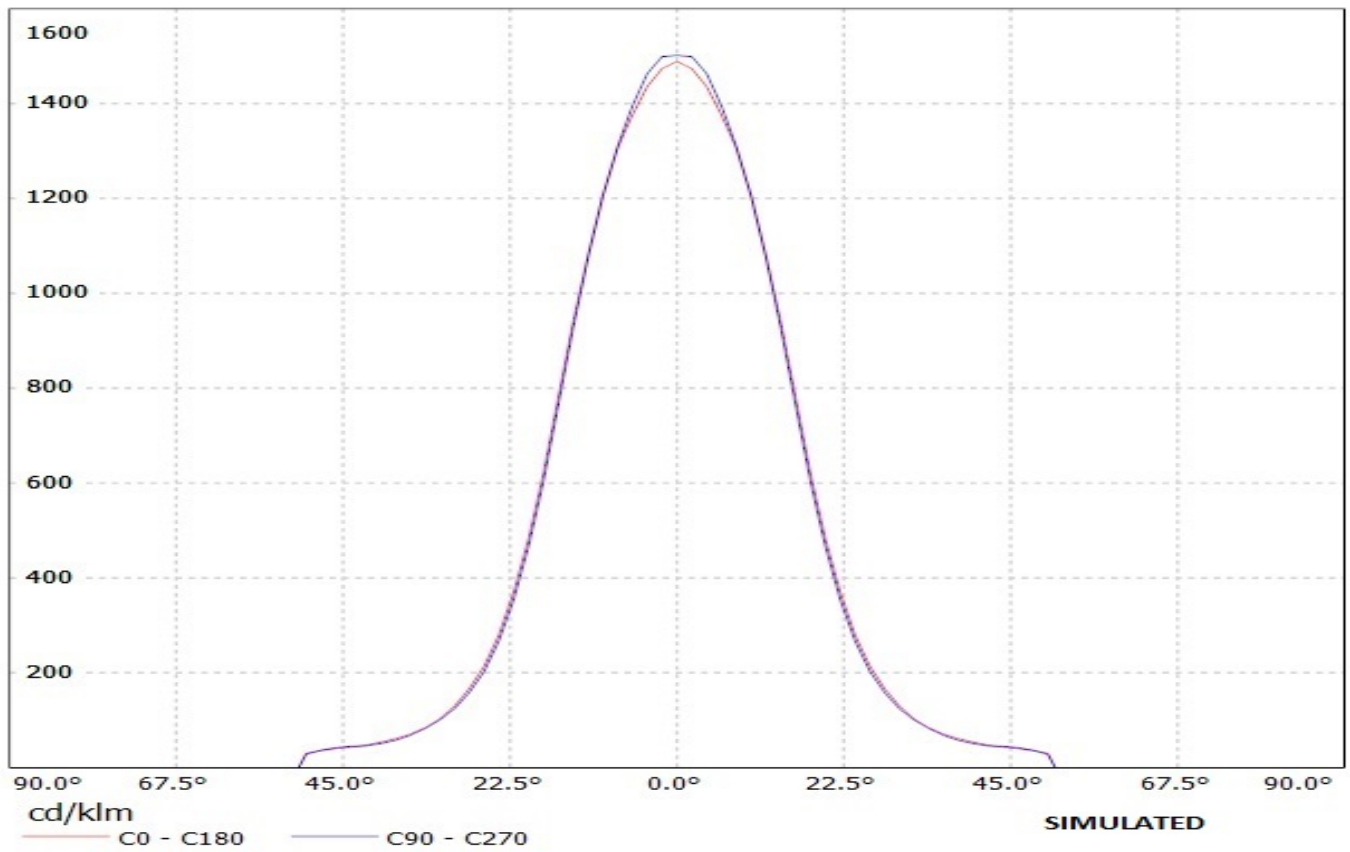
D

A

## Ledil Oy CA10317\_Ledilstar-P-SUB CA10317\_Ledilstar-P-SUB / LDC (Linear)

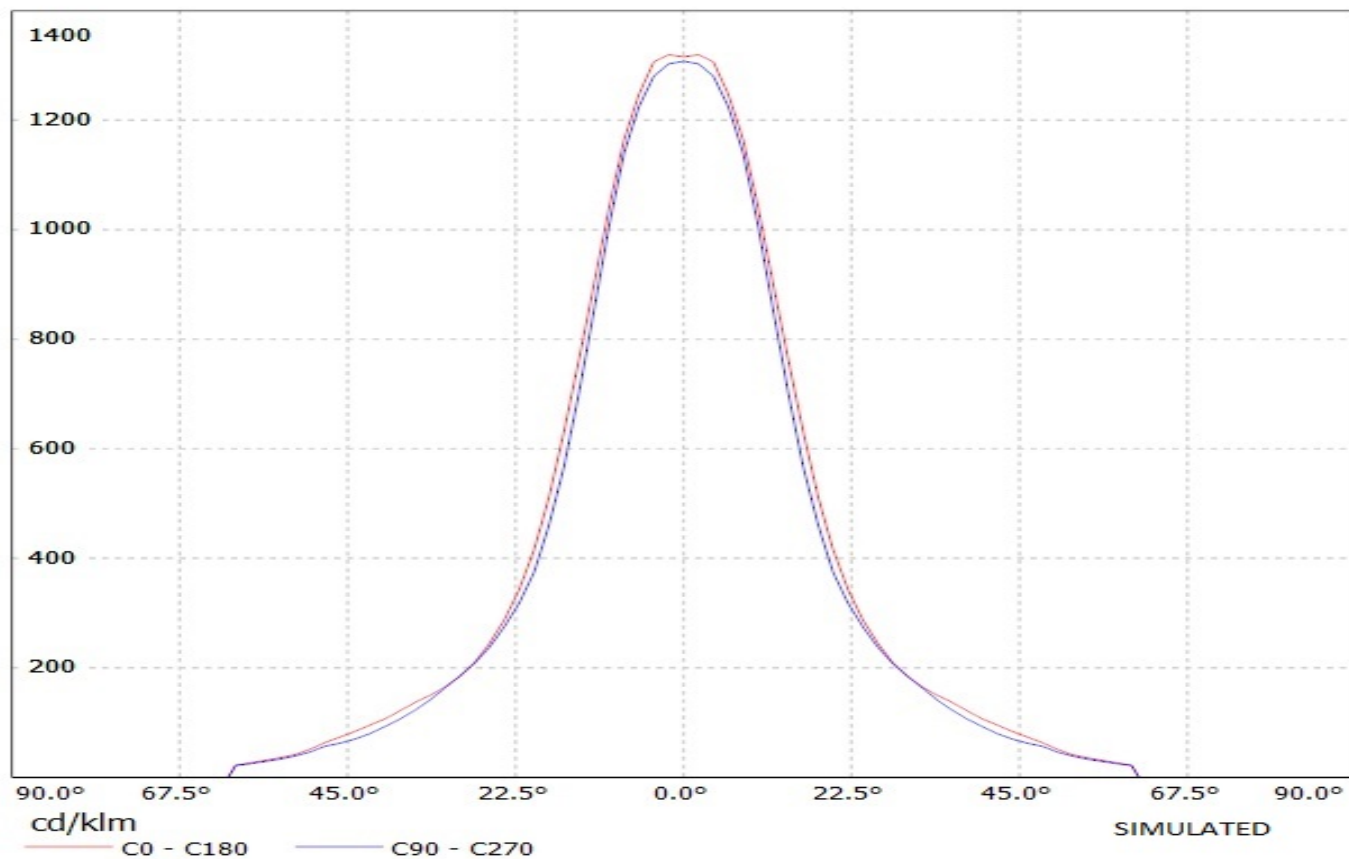
Luminaire: Ledil Oy CA10317\_Ledilstar-P-SUB CA10317\_Ledilstar-P-SUB

Lamps: 1 x Osram-os Projection (whiř™NA



## Ledil Oy C10270\_Ledilstar-P-W C10270\_Ledilstar-P-W / LDC (Linear)

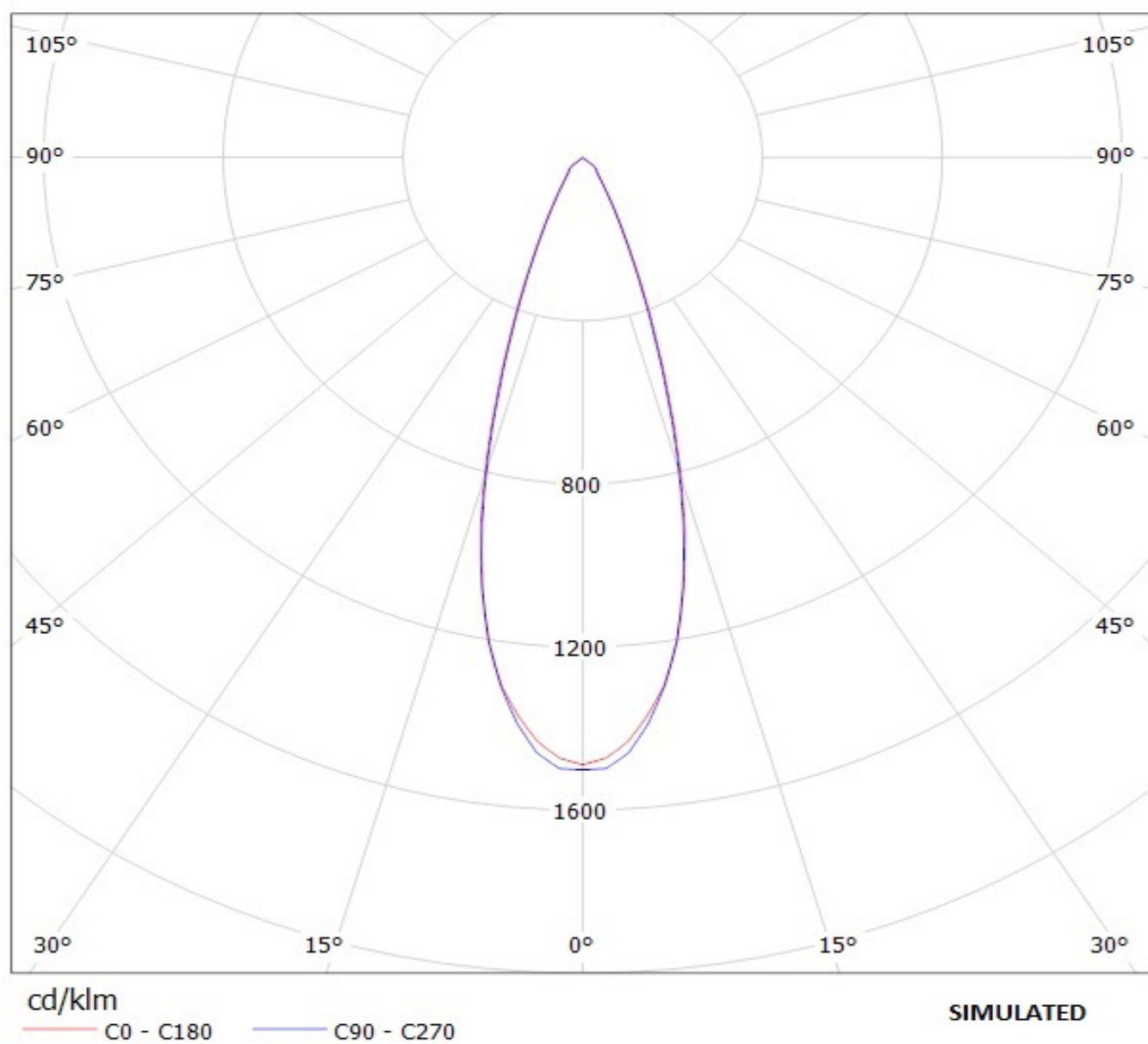
Luminaire: Ledil Oy C10270\_Ledilstar-P-W C10270\_Ledilstar-P-W  
Lamps: 1 x Osram-os Projection (whi<sup>TM</sup>NA



## Ledil Oy CA10317\_Ledilstar-P-SUB CA10317\_Ledilstar-P-SUB / LDC (Polar)

Luminaire: Ledil Oy CA10317\_Ledilstar-P-SUB CA10317\_Ledilstar-P-SUB

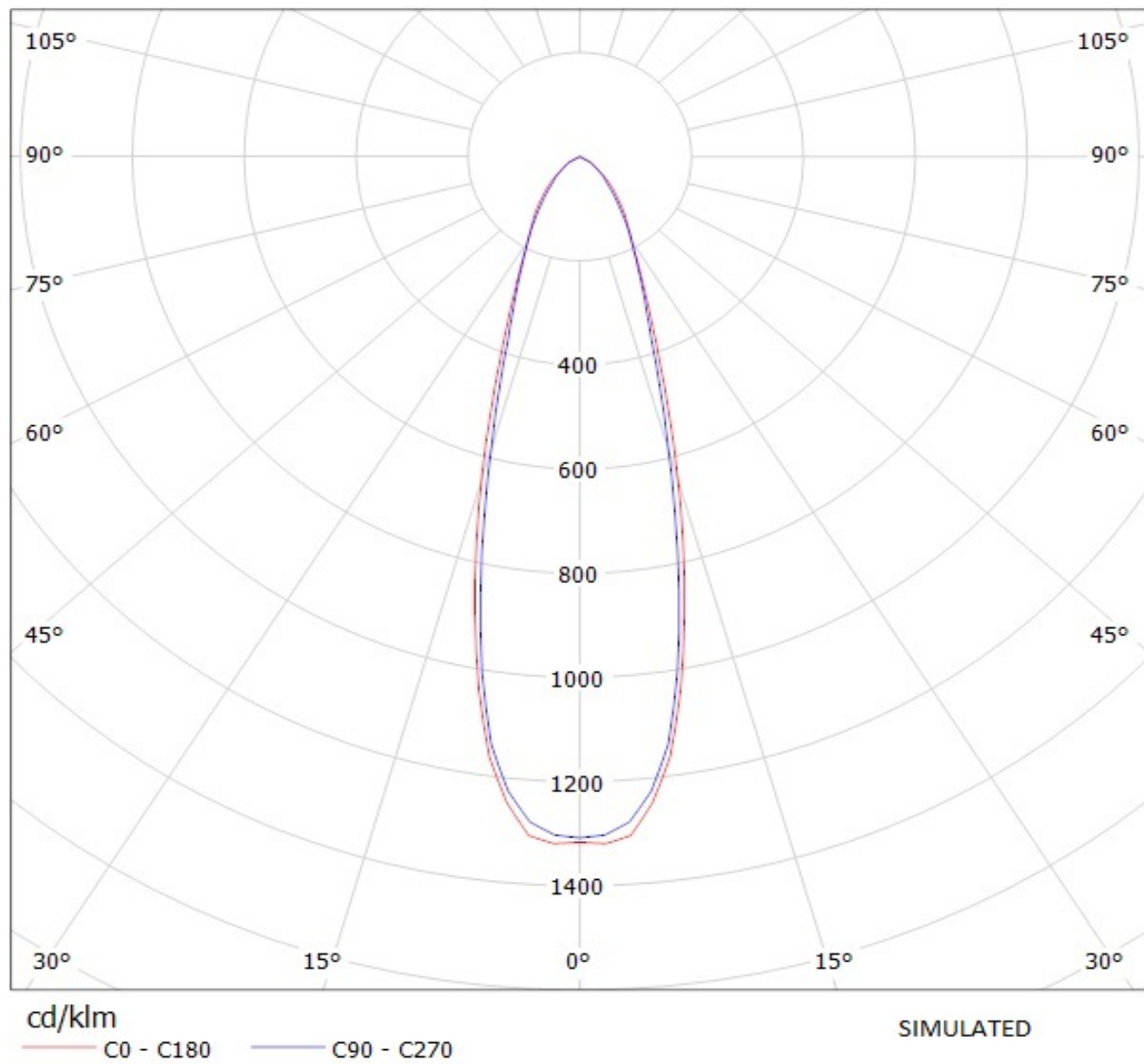
Lamps: 1 x Osram-os Projection (whiř™ŇA



## Ledil Oy C10270\_Ledilstar-P-W C10270\_Ledilstar-P-W / LDC (Polar)

Luminaire: Ledil Oy C10270\_Ledilstar-P-W C10270\_Ledilstar-P-W

Lamps: 1 x Osram-os Projection (whiř™ŇA



# Mouser Electronics

Authorized Distributor

Click to View Pricing, Inventory, Delivery & Lifecycle Information:

Ledil:

[C10270\\_LEDILSTAR-P-W](#) [C10271\\_LEDILSTAR-P-S](#) [CP10317\\_LEDILSTAR-P-SUB](#)